

84 FORD BRONCO
 V8, 302, PS, PB, elr, AM-FM, Dual Exhaust, Running Boards
\$7,500
77 150 FORD PICKUP
 6-Cyl., 3-Spd.
\$1,450
 Lancaster Co.
717-354-4996

JD tractor lift, runs good, \$7,500. OBO. 215-538-1945

Model A Ford Doodle-bug \$500; 1954 Chev. 10' dump \$1500; 1964 Chev. w/new 16' platform, 292 Eng. \$600; 1965 Ford COE LWB w/900-20 tires, hyd. brakes \$750; '64 GMC school bus farm trk. \$400; '65 Chev. platform 16' dump, 350 V8 \$2750; '64 Int. dump w/283 Chev. V8 \$600. 607-432-8499.

1981 GMC GENERAL TRACTOR

435DD, 13 Speed, Rayco Suspension, 11x24.5 Tires, 212 WB, Sleeper

NORMAN D. CLARK & SON
717-734-3682

1978 Int. 24' rollback truck w/95,000 miles, real nice condition.

717-943-2131

79 Mack Cab Over Twin Screw 375 HP, 10 Speed, A/C, PS, Air Ride Cab, Good Running Truck.

\$7,800

(717) 692-4598

(717) 692-4704

Pickup for sale, 1972 Ford 100, 6-cyl. w/3-spd, runs OK but needs body work, good weekender. Lehigh Co., 215-679-8921.

WANTED: Used dump truck bodies sizes 7x8, 7x10, 7x14 or whatever you have. 717-274-3380 anytime.

1978 International 1600 Series 16,000 GVWR 345 V8 Engine (Freshly Rebuilt) 4 Speed Transmission, 2 Speed Rear Axle, 12' Van Body, Runs Great \$2195.00 As Is.

Isaacs GMC Inc.
 163 S. Memorial Highway
 Trucksville, PA 18708

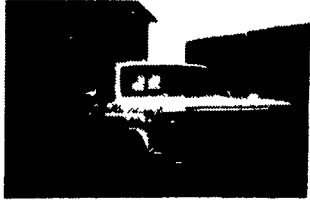
(717) 696-1111 (717) 283-0049

USED TRUCKS



'87 Chevy 4x4 Silverado Crew Cab, Dual Wheel, AT, PS, PB, AM/FM Cass., Cloth Seats, 454 Eng., 30,000 Miles, Exc. Cond.

\$14,800



'85 Ford XL F350, 4 Speed, PS, PB, AM/FM, Air, 8800 GVW 460 Engine, Blue, Exc. Condition.

\$8,200

Financing Available

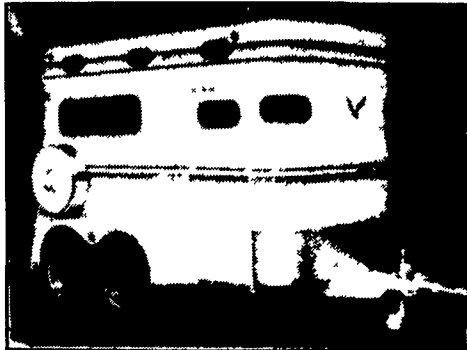
MARTIN'S AUTO SALES

725 E. Main St., New Holland, PA 17557
 Office (717) 354-9967 or (215) 445-4519

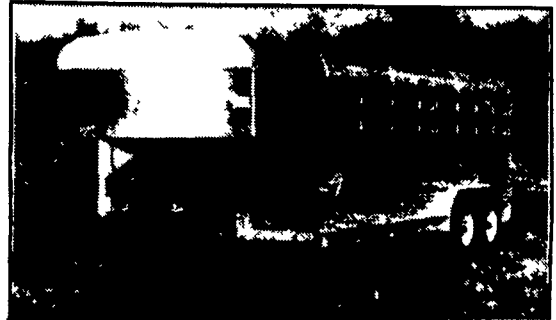
SEE IT ALL AT THE PA FARM SHOW



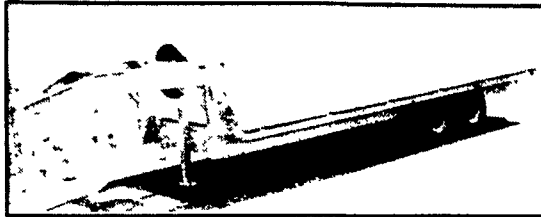
MULTI-PURPOSE DUMP BODIES



STEEL AND ALUMINUM LIVESTOCK AND HORSE TRAILERS IN BUMPER PULL OR GOOSENECK MODELS



All Sizes Available



FLATBED TRAILERS



AND GRAIN BODIES

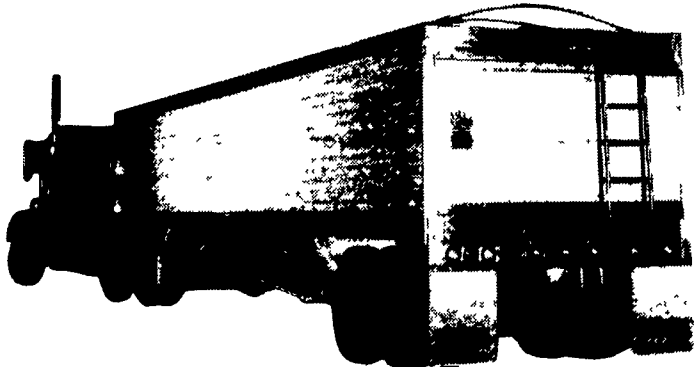


Hostetler Truck Bodies & Trailers

Rt. 322 Milroy, PA 17063 717-667-3921



FLASH SEE THE NEW 1989 TIMPTE GRAIN HOPPER AT THE PA FARM SHOW
 Outside #12, 13, 14 & 15



Got Grain? Then get the trailer that is TimpTE tough... the Super Hopper. It's not only built to take it...it's also built to cut fuel costs. The Super Hopper is lightweight and aerodynamically designed to reduce wind drag. When there's grain to be hauled, TimpTE does the haulin' best and pulls a lot easier than the rest.

M.H. EBY, INC.

Box 127, Blue Ball, PA 17506 (717) 354-4971

SUGAR VALLEY WELDING SHOP

LOGANTON, PA 17747

Phone 717-725-3882

WE TRADE & SELL ANY TYPE OF TRAILER - WE BUILD PICKUP BEDS & GRAIN BODIES



GVW 23,000

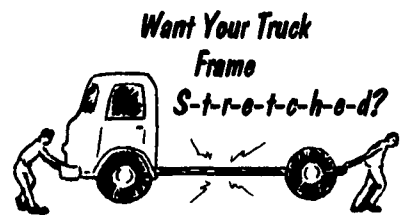


GVW 12,000

We'll build your trailer to suit you. Call for best price. No middle man. Buy direct & save. Any length & size.

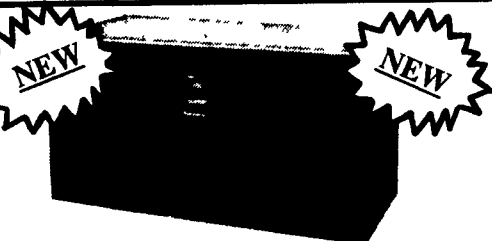


GVW 26,000



BIG OR LITTLE WE DO IT!

WE'LL BUILD TO YOUR SPECIFICATIONS!



STAINLESS STEEL UTILITY BOXES

Any Size From 12"x24"x24" To 24"x24"x60" Or Custom Built (Double Bottoms). Can Be Mounted On Most Any Truck Or Trailer. Call For Prices!

Check Us For Your Trailer Parts 2,000-22,500 Lb. Axles And Suspensions.

Metal Trailer Components, Lights & Electrical Supplies, Brakes, Tires And Wheels, Jacks, Couplers & Hitches, Hardwood, Accessories & Much More.

Check Our Prices For Receiver Hitches. Buy Where The Quality Is #1 At The Right Price.

For Info. Call 717-626-4705. Ask For Jerry.

Also Ask About Our Stainless Steel Light Bars!



BINKLEY-HURST BROS. INC.

133 Rothville Station Rd
 Litz, PA 17543
 (717) 626-4705

SALES PARTS SERVICE
 Mon-Fri 9 AM - 5 PM
 Sat 9 AM - 12 PM
 Sun 10 AM - 12 PM
 EMERGENCY PARTS DEPT. (717) 626-0885, (717) 933-4753, (717) 273-5571