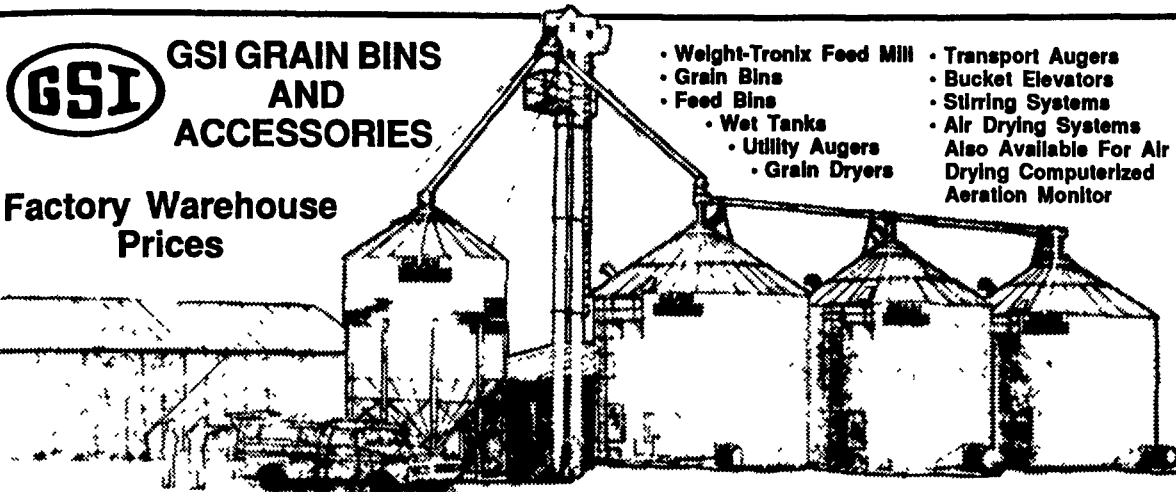


EM HERR - YOUR HEADQUARTERS FOR GRAIN & HOG EQUIPMENT

WE WELCOME YOU TO THE 1989 PA FARM SHOW
LOC. #602 & 603

GSI GRAIN BINS AND ACCESSORIES

Factory Warehouse Prices



- Weight-Tronix Feed Mill
 - Grain Bins
 - Feed Bins
 - Wet Tanks
 - Utility Augers
 - Grain Dryers
 - Transport Augers
 - Bucket Elevators
 - Stirring Systems
 - Air Drying Systems
- Also Available For Air Drying Computerized Aeration Monitor

Galvanized Bucket Elevator

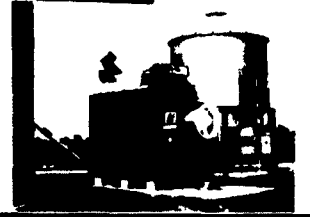


Bushel Capacities Available

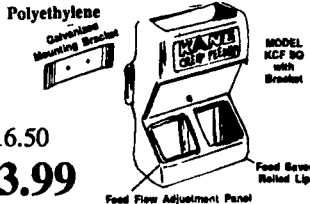
- 550 Bushel Per Hr
- 825 Bushel Per Hr
- 1100 Bushel Per Hr
- 1500 Bushel Per Hr
- 2000 Bushel Per Hr
- 2500 Bushel Per Hr
- 3000 Bushel Per Hr & Up



AUTO GRAIN DRYERS



KANE BABY PIG CREEP FEEDER



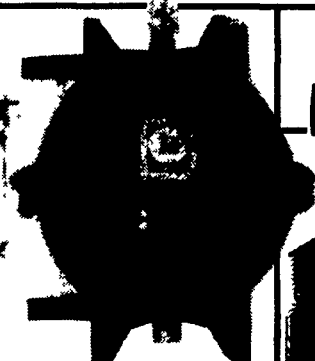
Polyethylene Construction

MODEL KCF 80 with Bracket

Feed Flow Adjustment Panel

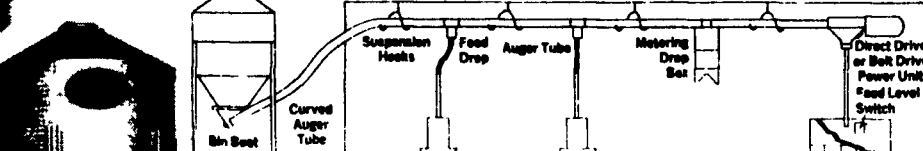
4 GALLON MONOFLO® MEDICATOR

\$129.99



5' PLUMBING KIT WITH SHUT OFF \$2.49

Flex-Auger Systems, PVC Tubing, 2", 3", 3 1/2" & 5" Diameter Systems



- Non-Corrosive
- Non-Caking
- Non-Rusting
- Long Lasting

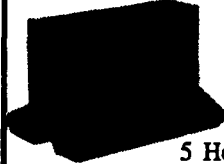
Reg. \$16.50
SALE \$13.99

CAMBRIDGE 40,000 & 60,000 BTU HEATERS



GSI FEED BINS From 2 1/2 Ton To 150 Ton

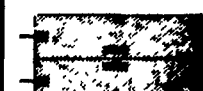
POLY-TUF NURSERY FEEDERS



- 2 Hole 1 Side... \$18.98
- 4 Hole 1 Side... \$39.99
- 6 Hole 1 Side... \$59.99
- 5 Hole Double Side... \$69.99

KANE HEAT MATS

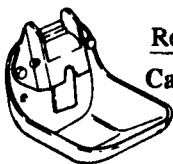
This Product is a Fiberglass Electrically Heated Mat To Provide A Warm Bed For Baby Pigs To Help Increase Number Of Pigs Per Litter. Mats Designed For All Types Of Farrowing.



| | Reg. | SALE |
|-------------------|---------|---------|
| 1'x3' Single Cord | \$33.95 | \$29.95 |
| 1'x4' Single Cord | \$38.95 | \$34.95 |
| 2'x3' Double Cord | \$64.95 | \$54.95 |
| 2'x4' Double Cord | \$75.95 | \$63.95 |

HOG WATERERS AND ACCESSORIES

- 1/2" Monoflo Nipple Reg. \$3.99 SALE \$2.99
- 1/2" Trojan Nipple Reg. \$5.99 SALE \$4.89
- 1/2" Stingy Nipple Reg. \$6.29 SALE \$5.19
- 1/2" Stingy Nipple Reg. \$5.69 SALE \$4.59
- 1/2" Edstrom Nipple Reg. \$9.75 SALE \$5.99



Cast Iron Cup Waterer Reg. \$18.99 SALE \$16.99

Trojan Cup Waterer Reg. \$15.99 SALE \$12.99

POLYTRON

Heavy Duty HOG & CATTLE WATERERS



- 80 Head Cap.
- Prevents Freezing to -30° without Electricity or Gas
- Assures Livestock Fresh Water Daily

\$189.95

No Gas No Electricity



NELSON AUTOMATIC LIVESTOCK WATERERS



- Ice Free Water in Winter
- Cool Fresh Water in Summer - Automatically

Rugged 8" Or 24" High Housings \$119.99

Lambert LP GAS HEATER



- Ideal For:*
- PIG BROODERS... Farrowing Thru Finishing
 - CHICKEN BROODERS
 - CALF AND HORSE OPERATIONS

\$59.95 Can Be Adjusted For 4,000, 5,000 Or 6,000 BTU's

MODERN AG STAINLESS STEEL FEEDERS

All Sizes Available



- Pre-Nursery
 - Nursery
 - Grower
 - Finishing
- 100% Welded Construction

TRUCKLOAD SALE

Heavy Duty 3 Gauge Wire 8 Yr. Warranty

DELPHI WOVEN WIRE FLOORING

Sizes: 4x8, 5x7 Also Custom Sizes Available Available: Tenderfoot & Plastic Flooring

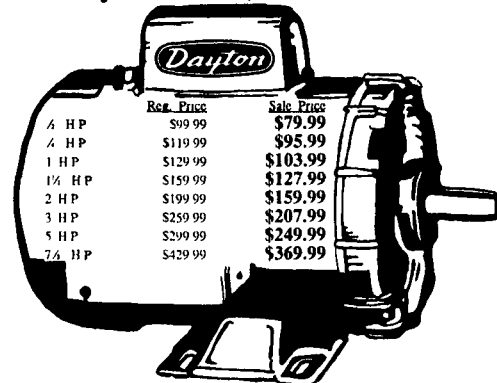
LIVESTOCK SUPERBOWL A Low Cost Waterer With High Efficiency Performance

Zero Operating Cost Superbowl prevents freezing without electricity. Think of the savings, compared with electrically-heated waterers!



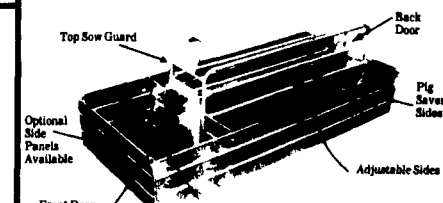
\$359.99

HEAVY DUTY FARM MOTORS Totally Enclosed, Fan-Cooled



| HP | Reg. Price | Sale Price |
|-------|------------|------------|
| 1/4 | \$99.99 | \$79.99 |
| 1/2 | \$119.99 | \$95.99 |
| 3/4 | \$129.99 | \$103.99 |
| 1 | \$159.99 | \$127.99 |
| 2 | \$199.99 | \$159.99 |
| 3 | \$259.99 | \$207.99 |
| 5 | \$299.99 | \$249.99 |
| 7 1/2 | \$429.99 | \$369.99 |

HEAVY DUTY FARROWING CRATE European Style



\$169.95

Sukup Grain Handlers



Low Cost Drying Systems

MJM GRAIN AUGERS With Tube, Auger, Motor Mount, Pulley Belt and Guard

| | | | | | |
|--------|----------|--------|----------|--------|----------|
| 4"x10' | \$116.95 | 6"x10' | \$189.95 | 8"x10' | \$319.95 |
| 4"x15' | \$139.95 | 6"x15' | \$229.95 | 8"x15' | \$369.95 |
| 4"x20' | \$159.95 | 6"x20' | \$269.95 | 8"x20' | \$419.95 |

* Extensions Also Available

We Custom Cut Sizes To Fit Your Operation!

Dayton BELT DRIVE FANS

Model 3C615 Fan: 36" blade dia. galvanized frame and blade Motor: 1/2 HP, 1725 RPM, 115/230V TENV enclosure, ball bearing, split phase, automatic thermal protection, rigid mounting base.



36" with 1/2 H.P. Motor Mfg. List \$329.00 SALE \$229.99 Shutters Available

REPLACEMENT FEED HOPPER

\$44.90

SOW FEEDER AVAILABLE IN 9" & 11"



Early Order Sale - Save \$100.00

Performance

CERTIFIED CFM LICENSED BY AMCA (*)

| MODEL NO. | 0.0" SP | 0.05" SP | 0.10" SP | 0.125" SP | 0.15" SP | 0.20" SP | 0.25" SP | FAN RPM | MAX. FAN BHP(1) | SHPG. WT. |
|-----------|---------|----------|----------|-----------|----------|----------|----------|---------|-----------------|-----------|
| 3C615 | 11,300 | 10,750 | 10,200 | 8900 | 8500 | 8750 | 7750 | 510 | 0.63 | 108.0 |

We Ship UPS Anywhere

★ ★ FULL LINE PARTS DEPARTMENT ★ WE SELL, SERVICE & INSTALL

EMHERR EQUIPMENT, INC.

14 Herrville Rd., Willow Street, PA 17584
Phone 717-464-3321 or Toll Free: 800-732-0053