

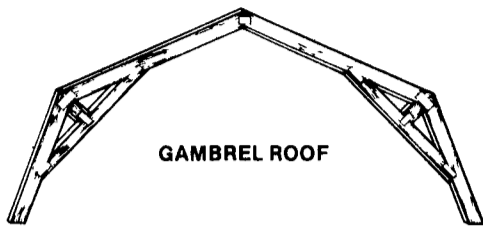
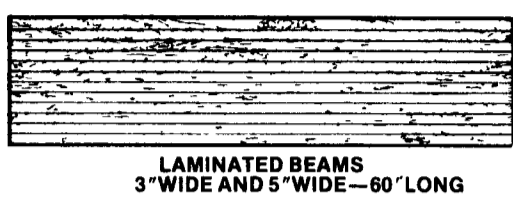
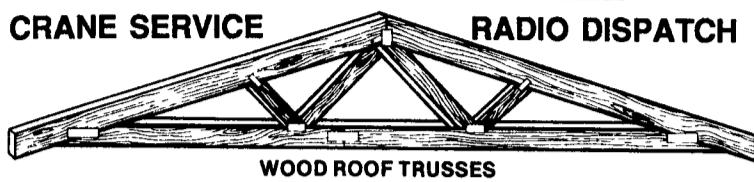
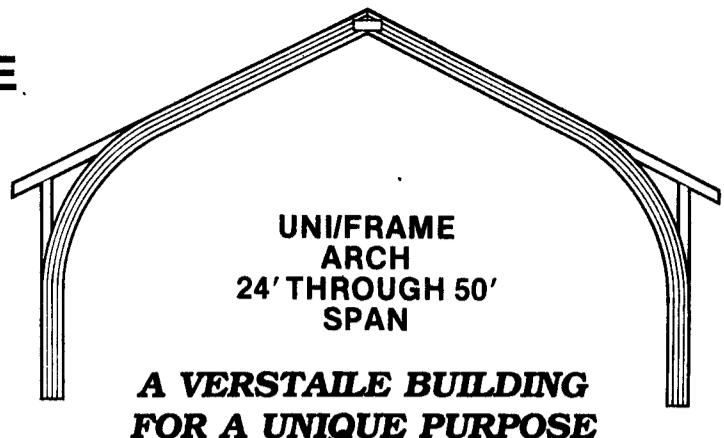
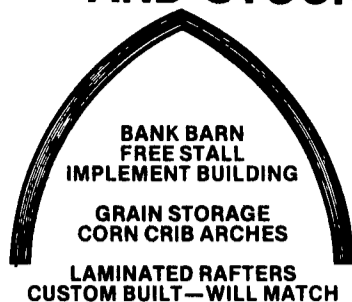
Telephone: (717)866-6581

RIGIDPLY RAFTERS INC.

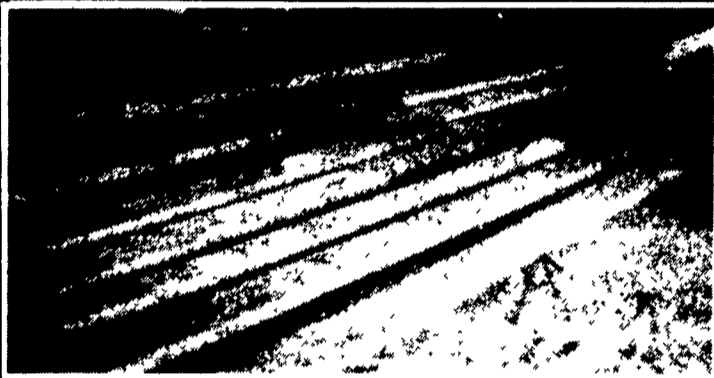
MANUFACTURERS of
LAMINATED RAFTERS
and WOOD ROOF TRUSSES

701 E. Linden St., RICHLAND, PA 17087

**PRODUCTS
WE MANUFACTURE
AND STOCK**



Quality Materials And Service For Over 30 Years



*Gluing
Wood
For More
Than 30
Years*

**Lam-Posts
Are Straight,
Light And
Strong**

**THE
GLU-LAM POST**

The Only REAL Laminated Post

• Discover the labor saving advantages:

- Glued Laminated with Waterproof Glue.
- Lighter, Straighter and Stronger than solid sawn or nailed laminated posts.
- C.C.A. Treated laminations are used on the Ground Contact End.
- C.C.A. Penetration is Greater than solid sawn posts.
- Untreated wood above ground eliminates the need for Galvanized Fasteners.
- Finger Jointed to form One Piece laminations.
- Eliminates Cracking, Splitting and Checking.
- Tested and Approved for use in the post frame construction industry by engineers at The Pennsylvania State University.

STANDARD SIZES:

- 6 x 6 Equivalent - 3 ply 2 x 6, 4 1/16" x 5 1/4"
- 6 x 8 Equivalent - 3 ply 2 x 8, 4 1/16" x 7"
- 8 x 8 Equivalent - 4 ply 2 x 8, 5 1/2" x 7"

Other sizes available upon request
6'0" minimum standard treatment.
Available in lengths to 60'0"

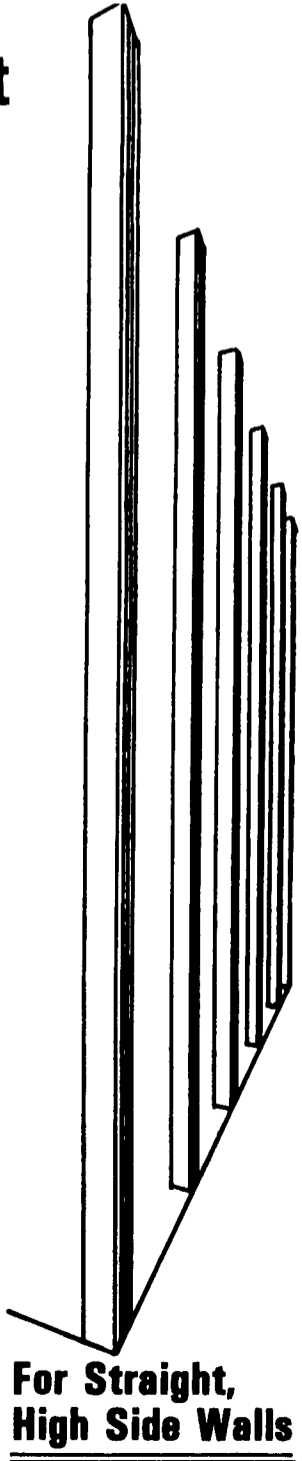
• Improve the quality of your next post frame building by specifying glue-lam posts!

RIGIDPLY RAFTERS' "GLU-LAM COLUMN" SPECIFICATIONS

All columns shall be Rigidply Rafters' "Glu-Lam Columns", manufactured of #2 southern yellow pine laminations glued together at 12% moisture content with phenolresorcinal glue. They shall be assembled and clamped under pressure in a controlled atmosphere until the glue is cured.

The columns shall be CCA pressure treated to a .40 retention factor, a minimum of 12" above the ground line on the ground contact end. The columns shall meet the following test standards; A.I.T.C. T107, T110, T114 and A.S.T.M. D905-49.

**Finger Jointed
Treated to
Untreated**



- * FABRAL CORP.
- * PLYCO CORP.
- * LUMBER
- * TREATED LUMBER
- * DECKING
- * OUR OWN T/G FLOORING
- * CANNON BALL DOOR TRACK