



SAFEMARK FARM TIRE VALUES!



*The Hard-Working,
Hard-Pulling Tractor Rear*

MULTI-ANGLE M/B

12.4-28 4 Ply
\$157.34

- Excellent drawbar pull with long-bar, short-bar lugs for improved traction

13.6-28 4 Ply
\$176.80

15.5-38 6 Ply
\$272.67

- Designed for improved stability and roadability, plus reduced vibration

16.9-38 6 Ply
\$345.17

18.4-34 6 Ply
\$354.56

- Strong angle-braced lugs have self-cleaning design

18.4-38 6 Ply
\$389.00

18.4-38 8 Ply
\$419.00

- High-strength polyester cord body, and heavy duty rim shield protects tire from damage

20.8-38 8 Ply
\$559.00



Get the pull of your life with
**MULTI-ANGLE RADIAL M/B
REARS**

- Revolutionary 3-lug per pitch design improves traction and ride
- Computer designed "natural" shape casing improves tire body life
- Radial construction provides better traction, lower fuel and overall costs

18.4R34 ★	\$477.00
18.4R38 ★	\$518.00
20.8R38 ★	\$725.00
20.8R38 ★ ★	\$769.00
18.4R42 ★ ★	\$617.00

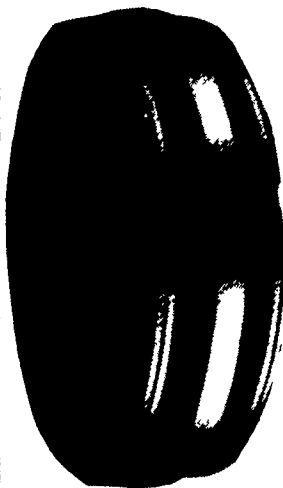


- Now You Can Buy
Safemark Tires At
Tremendous Savings

- Prices Good Until
1/31/89

FRONT TRACTOR SUPER HI RIB

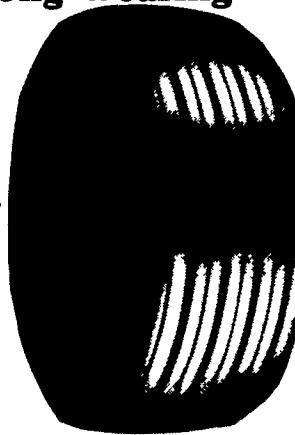
3 Rib



550-16 4 Ply	\$38.26
600-16 4 Ply	\$39.60
650-16 6 Ply	\$48.68
750-16 6 Ply	\$63.78
750-18 6 Ply	\$72.70
9.5L-15 6 Ply	\$69.98
11L-15 6 Ply	\$86.47
1000-16 8 Ply	\$94.91
1100-16 8 Ply	\$119.64

Mfg. by Kelly Springfield

Strong, Long Wearing FARM UTILITY TIRE FOR THE WAGON



- High flotation
- Heavy load capacity

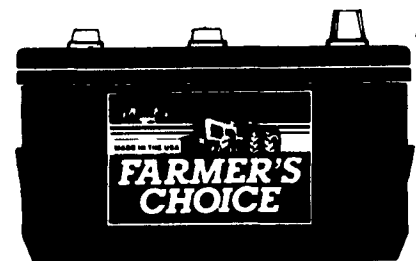
Size	Ply	Sale Price
670-15	6	\$ 38.95
760-15	6	\$ 39.26
600-16	4	\$ 35.65
650-16	6	\$ 45.24
750-16	6	\$ 51.41
750-16	8	\$ 56.53
9.5L-14	6	\$ 42.38
9.5L-15	8	\$ 45.92
11L-15	8	\$ 47.63
12.5L-15	8	\$ 64.52
11L-16	8	\$ 50.45

Mfg. by McCreary Tire

Save

Save

FARM TRACTOR BATTERY



- Rugged high impact case and cover for vibration resistance
- Increased starting power
- Built to last-season after season
- Made in the USA

\$68⁰⁰

FC-30 HEC
815 Amps

SAFEMARK

Division of Pennsylvania Farmers' Assoc.
Camp Hill, PA 17011

CALL

1-800-446-3543 IN PA
IN NY, NJ, CONN, MD. 1-800-451-8987

• QUALITY

• SERVICE

• DEPENDABILITY

• ECONOMY

For Dealer Nearest You