

1976 J.D. snowmobile, looks & runs great, \$375; also 20 hole pig feeder. Lanc. Co. 717-667-3820 day, 717-664-4847 eve.

Pettibone forklift 2500 lb. 10' lift side shift propane \$2300, flatbed trailer 40' \$1200, 3 elec. gas pumps \$100 ea. Ulster 914-895-3160

3PTH 2-row mechanical transplanter, exc cond., \$750. Lackawanna Co. 717-597-3296.

371 Det. engine \$995; 227 6 cyl Cont. eng. w/clutch \$795, '69 Chev. dump C60 V8 5&2 \$1695. Cecil Co. 301-378-2785.

Antique platform rocker, good cond. w/casters on legs Lebanon Co 717-866-2432.

8-room house, 4-car garage, corn crib, wagon shed, beautiful building sites. Snyder Co. 717-694-3822.

Reg Morgan gelding, 6 yr. old, rides & drives. Daniel Rissler, RD#1 Box 452, Port Treverton, PA 17864.

Nice Sauder loader w/6 ft snow bucket, trip action, \$225 Off Ford tractor Lebanon Co 717-867-5228 after 4PM

S.S. 300 gal Milkeeper tank \$400; Bender s s dumping station, 100 ft hose \$200. Both excellent Benj Allgyer, 6218 Plank Rd, Narvon, PA 17555

Pheasants Red Golds, Black Mutants & others. Will trade motorcycle 3800 mi for old jeep in good cond., inspected. Franklin Co 717-264-4395.

GWV 12' flatbed 4SP, PS, PB, AC, no rust, nice truck, \$4500 neg. Leb. Co. 717-469-2138.

15 white guineas, 4 months old Must go! \$3 75 or all 15 \$3.25. Lanc. Co 717-768-8821.

Alfalfa hay no rain \$2/bale. Timothy hay no rain \$1 75/bale at barn. 2 alum storm windows complete 62 1/2 x 36. York Co 717-432-9056

2-horse Acme wagon, pony wagon wooden wheels, spring seat, box sleigh on bobs, draft horse cart rubber wheels Cumb Co 717-243-8149.

Elec baseboard heaters, 3 4 ft, 1 8 ft., 1 10 ft., 4 thermostat, \$50 for all. Leb Co. 717-865-5686

young animals, 18,000 lb. herd ave. DHIA tested. Holsteins, 25% registered, home raised. Tioga Co. 717-724-1344.

Boumatic 2" pipeline w/3/4 HP vacuum pump for 60+ cows \$2700. 50 cow trainers \$250 ea. Bradford Co 717-596-2267 eves

Proven large Reg Romney ram (twin) 5 yr excellent fleece, Overdale line \$150 firm or trade Berks Co 215-987-6902.

Disc, heavy duty, J.D. 26" dupped discs, 9 disc blades per gang, adjustable, width 17' excellent cond., \$3500 Sussex, NJ 609-971-7648

Beautiful AKC Rottweiler puppies \$265, ready Jan 10. Lanc. Co 215-445-4000.

Jackal bulls 33" long logs. J.K. Stoltzfus, 935 Truce Rd., Holtwood, PA 17532.

Meat slicing machine 10" blade 1/4 motor auto sharpener hand feed nice cond Lanc Co. 215-267-6757.

New Zealand White rabbits & cages. Aaron Hoover, 363 Glenbrook Rd., Leola, PA 17540.

Tractor operator manuals, IH F12, 10-20, W30, Super M, H, 1951 JD B, \$35 ea 716-554-6479.

Free Cocker Spaniel, male 717-626-5397.

JD 1010 crawler loader needs work on undercarriage, 10x60 Aermotor windmill. Cumb Co 717-532-3989.

No kick cow squeeze, screw operated. Also elec. fly spray mister. Both excellent. Butler Co 412-368-8188 eves.

Peanut oil for animal feed, 35 gal drums Also used barn beams. Dauphin Co 717-362-9850 eves

Antique oak top combination store counter w/24 heavy steel, 100 lb capacity nailbins, 8"x33". Franklin Co 717-597-3169

24' Badger BN 185 manure pump, 1000 RPM trail type, \$3900 Franklin Co 717-762-8590.

Paulownia seedlings for spring delivery, send for prices. Seed pkt & instructions \$2 Charles Abel, HCR 81 Box 239, Big Cove Tanner, PA 17212

Polled purebred Charolais bull calf, top performance genetics. See him at Farm Show, Black Simmental Bulls also avail. York 717-428-2309.

Farmall Cub tractor, live hyd, cultivator, drawbar, good rubber, runs OK, \$2300 Berks Co 717-933-4659

1976 Ford 250 pickup truck new tires, new radiator, runs good, asking \$750. Chester Co. 215-444-9733.

Snow blower for 10HP Bolens; Troy-Bilt roto tiller elec. start needs work; '75 Lincoln loaded, best offer Chester Co. 215-383-5280

THE FARM BUILDINGS PLACE

"Designed for your needs... to your specifications"

- Pole Barns • Poultry Houses • Dairy Barns
- Horse Stables • Riding Arenas • Utility Buildings

To help you plan your building and write your own specifications, a professional Snavelly field representative is ready and willing to assist you. For over 100 years Snavelly has satisfied thousands of area farmers. Snavelly's factory fabricated panels, walls, trusses, etc. not only make erection easier and faster but also save you considerable money. Phone us for a no-obligation consultation on your building requirements.

Since 1878



We take time to help you build better!

Landisville, 150 Main St., 898-2241

Franklin Coal Sales, Inc.

Spittler Road Ravine, PA 17966

Exclusive Sales Of Blaschak Coal

BLASCHAK QUALITY COAL = MORE HEAT, LESS ASH



PREMIUM ANTHRACITE

COMPETITIVE PRICES



For Efficient And Reliable Service...

Contact Your Local Hauler, Or

CALL (717) 345-8486

Hours: Mon.-Fri.: 7AM - 4:30PM
Sat.: 7AM - 12 Noon

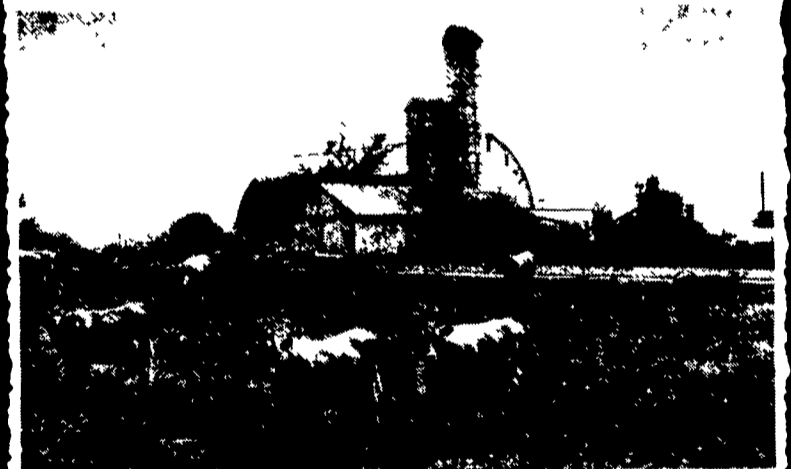
PURER WATER FOR YOUR HEALTH CONCERNS

No Gimmick, Quality U.S.A. Products. Chemical Contamination, Bad Taste, Radon Concern, Metals (Lead), Chlorine, Etc., Problems. No Maintenance, E.P.A. Registered, Low Cost Per Gallon. 7 Day - No Coat Trial.

Call Or Write:
DONALD H. HOOVER
"Dayspring Farm"
Box 103
White Hall, MD 21161-9411
(301) 357-4580

INCREASE YOUR INCOME

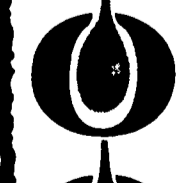
Bad Water Will Lower Your Income



By removing nitrates, bacteria & sulfates from your water you will have a healthier herd. Acid in water increase herd health problems



Reduce Reproduction Problems



Reduce Herd Health Problems



Produce More Milk

We can remove these nitrates, bacteria & sulfates and put your pH to near neutral

Call Us Before You Buy
And See Our Many Happy Users



Leola, PA 717-656-8380

WATER CONDITIONING INC.

if no answer, call early in the morning or evenings.