

York Co. DHIA

dhia Monthly Report

Pennsylvania Dairy Herd Improvement Association

November, 1988

1026 lbs. BF and 26,689 lbs. milk was produced in 305 days by 416 a 6 year old Holstein owned by McRai Dairy Farm RD#1, Box 169, East Berlin, Pa. 17316. Second high was Fawn a 6 year old Holstein who produced 1017 lbs. BF and 23,496 lbs. milk in 305 days, owned by Wayne E. Myers, 3850 S. Salem Church Rd., Dover, Pa. 17315. High herd was Smysers Richlawn Farm, 2691 East Berlin Rd., York, Pa., with 75 cows producing 24,624 lbs. milk and 852 lbs. BF. Second high was Lynn Wolf, RD#1, Abbottstown, Pa. 17301, with 74 cows producing 21,891 lbs. milk and 788 lbs. BF.

Rolling Herd Average

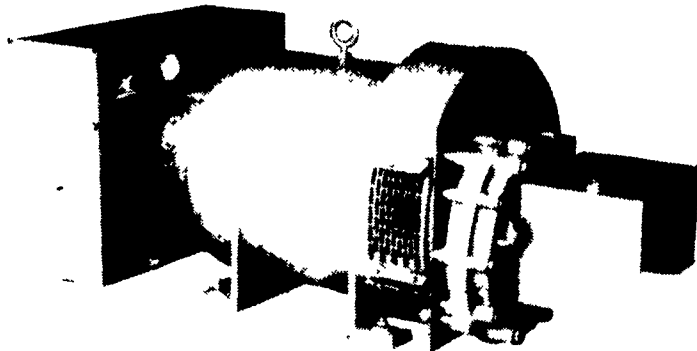
Name	Brd.	No. Cows	% Days In Milk	Milk Lbs.	Fat Lbs.
Smysers Richlawn Fms	3	75.4	87.4	24,624	852
Rutters	3	10.9	88.0	19,539	803
Lynn Wolf	3	73.8	89.3	21,891	788
Jim&Holly					
McCaffree	8	53.2	87.4	21,732	786
HS & RE Fetrow	3	84.3	87.3	21,901	781
Beshore Farms	3	49.0	86.9	20,982	765
McRai Dairy Farm	B3	245.4	88.5	20,138	750
Sinking Spring Fmnc	3	63.3	88.0	19,793	728
Shelbud Holsteins	3	88.0	89.9	19,878	723
William Ruppert	B3	56.6	86.1	19,793	721
Thomas A Boyer	3	48.5	83.4	19,231	717
Dan & Patti Hushon	B3	45.7	88.9	20,540	716
Melvin + Barb Marks	3	47.4	88.2	19,803	702
Rick L Cook	B3	77.2	86.3	18,603	700
Melvin R Lehr	B3	47.4	84.8	18,506	693
Wayne E Myers	3	52.6	83.1	18,807	692
Four-Co Farm	3	52.0	86.2	20,265	688
RR & MR Stewart	3	59.5	86.8	18,233	677
William Myers	B3	51.5	90.1	18,521	672
Earl Fuhrman	3	94.0	89.1	18,746	668
Leonard Greek	3	48.8	89.1	17,279	665
B Robert Charles	3	49.7	84.3	18,180	663
Ramsey S Cooper Jr	3	64.7	86.0	17,582	662
David Gemmill	B3	98.4	90.2	17,743	661
T Edwin Johnson	3	80.8	88.2	16,609	657
Big T Holsteins	B3	100.1	87.7	18,183	655
Rutter Bros	2	68.5	88.6	13,811	648
Hopewell Center Farm	B3	29.8	85.9	18,301	646
Elvin G Molison	B3	146.2	85.5	17,289	644
Leroy E Walker	B8	20.8	86.8	18,464	641
Spring Meadow Farm	4	6.5	91.7	13,660	636
Mervin W Hertzler	2	62.2	88.4	13,980	634

Gary W Thoman	3	50.6	85.6	17,463	631	
Albert Dehoff	B3	150.2	88.9	17,555	630	
VH+MB Hushon	G3	73.7	91.4	17,549	628	
Elvin R Deiter	G3	59.0	84.6	17,611	628	
Woodbine Farms	3	144.8	84.8	17,368	626	
David Stewart	3	112.6	92.8	16,141	619	
Eisenhart Bros	B8	98.3	90.5	16,584	618	
Smokey Hollow Farm	G3	50.4	79.4	18,322	615	
Harold Brown	3	66.4	88.2	17,502	615	
J Donnell Taylor	B3	140.3	85.5	17,167	613	
Rodman C Thompson	3	69.0	84.7	17,575	612	
Perrydell Farms	B3	164.2	84.3	16,684	610	
Robt Baumgardner Jr	B3	60.9	86.2	18,346	604	
Gum Tree Farm	3	46.9	88.3	16,613	604	
Ann + Kurt Pealer	B3	29.9	89.1	17,150	604	
Edwin L Calhoun	B3	53.1	85.0	17,027	601	
George Innerst & Sons	B3	112.3	86.1	16,567	601	
Walnut Hill Farm	B3	54.3	83.5	16,647	598	
Bupplynn Farms Farm 2	B3	65.3	85.5	17,623	594	
Double D Farm	G3	109.5	82.9	15,526	593	
Kenneth L Rexroth	B3	142.5	85.2	15,717	592	
Furnace Creek Farm	3	113.5	83.8	16,127	591	
Deal Holsteins Farm	B3	127.8	87.4	15,901	591	
Kevin S Holtzinger	B3	203.4	86.0	16,065	590	
Keith A Shaffer	3	43.1	86.3	15,805	584	
Doug & Gene Kilgore	B3	70.4	85.0	15,988	579	
Leaspring Farm	3	53.3	84.6	16,630	578	
Wayshar Farm	B3	91.0	85.5	15,220	578	
T+K Jerseys	B4	10.8	86.1	12,189	576	
Robert W Mays	B3	66.2	85.8	15,800	575	
Dale & Darla Doll	3	78.0	87.6	16,373	573	
Leroy Bupp	3	116.1	83.9	16,411	573	
John C Krone	B8	44.0	87.6	15,321	572	
Dennis J Myers	3	50.5	88.1	18,419	571	
Ellis Crowl	B3	79.2	86.2	14,702	570	
Galen Hess	G3	67.5	86.8	15,315	562	
Nelson R Brennenman	B3	58.9	82.6	15,850	560	
Hidden Springs Farm	B3	82.4	85.0	15,846	558	
Howard G Taylor	B3	71.4	85.1	14,621	556	
William-Robert Fantom	B3	68.9	87.2	15,372	550	
Woodbine Farms ET-123	3	7-4	305	19,889	4.2	844
242	3	5-0	304	23,696	3.9	940
ET-258	3	4-6	305	18,468	3.6	681
347	3	3-3	305	22,058	3.7	819
438	3	2-1	305	17,904	3.8	680
450	3	2-0	305	15,558	4.2	658
William-Robert Fantom Cora	3	5-4	305	16,707	4.1	689
Donald Lanius Joan	3	3-7	305	14,160	4.9	698
Sinking Spring Fmnc Jester	3	4-2	305	22,670	3.5	802
Mirage	3	4-0	305	23,829	3.2	776
Marsha	3	3-0	305	23,752	3.5	831
Midge	3	2-10	305	21,157	3.8	816
Rutter Bros Sexy	3	4-2	297	17,827	4.3	781

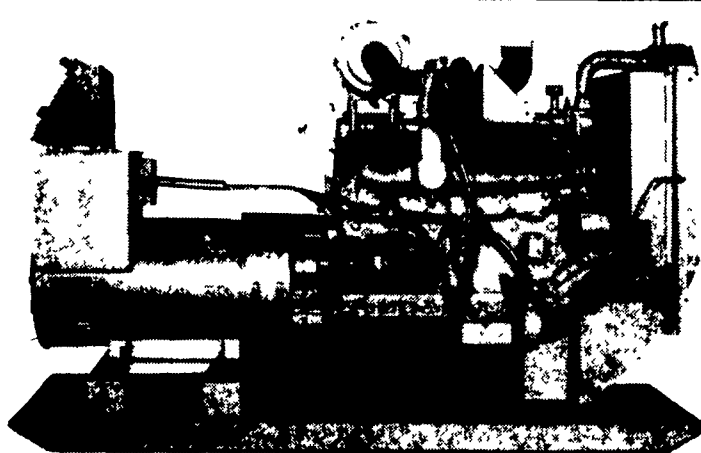
Beshore Farms Omen	3	5-1	305	24,500	3.7	927
Harold Brown Edolie	3	5-2	305	21,064	3.2	686
Martha	3	4-5	305	22,984	3.1	731
Gum Tree Farm Debbie	3	9-1	305	16,352	4.1	671
Hannah	3	5-8	305	20,152	3.5	723
Elwood T Krick 57	3	4-1	305	18,878	4.4	836
Thomas A Boyer Fritzie	3	7-1	305	26,067	3.3	871
Holly	3	4-11	305	22,102	3.7	822
Izzy	3	4-5	305	22,136	3.8	856
Indigo	3	4-0	305	24,308	3.5	866
Jazzy	3	3-1	305	24,381	3.7	905
Furnace Creek Farm Harriet	3	8-6	305	24,175	3.4	840
123	3	6-9	305	18,187	3.7	683
3	3	6-2	305	23,620	3.5	841
124	3	5-3	305	16,459	4.3	712
134	3	3-1	287	17,394	3.8	664
HS & RE Fetrow Becky	3	8-11	305	23,338	3.7	864
Tidy	3	4-3	305	30,566	3.0	920
Reenee	3	6-3	305	24,898	3.3	830
Rodman C Thompson Bryce	3	5-8	305	21,021	3.9	823
Twkglow	3	5-2	305	21,578	3.9	852
Sandy	3	4-3	305	19,578	3.6	710
FliteB3	3	4-5	305	19,578	3.6	710
Lolypop	3	4-2	305	22,680	3.8	876
Suzan	3	3-10	305	24,112	3.2	784
RR & MR Stewart Pabst	3	10-4	296	21,993	3.7	823
*Paula	3	6-11	305	22,699	3.6	833
Smysers Richlawn Fms Fran	3	8-2	305	26,128	3.6	940
Bernie	3	3-0	267	25,066	3.1	797
T Edwin Johnson Bess P	3	3-11	305	14,681	4.7	693
Leroy Bupp Maudie	3	6-3	305	21,859	3.0	655
Brenda	3	6-0	305	21,499	3.2	691
Hidden Springs Farm Lass	3	7-4	305	24,731	3.5	867
Noodles	3	6-5	305	17,966	4.0	733
Nena	3	5-6	305	19,626	3.7	735
Ringer	3	3-2	305	19,895	3.6	722
Dennis J Myers 155	3	4-7	305	22,743	3.1	718
Lynn Wolf Karat	3	7-2	305	28,293	3.4	974
Nifty	3	4-6	305	21,009	3.7	781
Novena	3	4-1	305	28,309	3.4	967
Katydid	3	3-1	305	31,858	2.4	779
Oatmeal	3	3-1	305	24,518	3.3	810
Pumpkin	3	2-0	305	21,338	3.0	653
Ramsey S Cooper Jr Alnat	3	6-5	305	22,241	4.0	891
Connie	3	6-9	305	20,138	3.9	794
Eldo	3	3-5	305	20,910	3.3	693
Dash	3	4-7	305	21,859	3.4	763
Marsha	3	3-3	305	18,390	3.6	674
Shasta	3	2-1	305	18,087	3.6	656
Melvin R Lehr 52	3	9-2	289	17,897	4.3	786
103	3	6-5	305	21,595	3.2	705

(Turn to Page D19)

STANDBY GENERATORS



PTO Driven



Automatic Systems

MAXI-POWER INC.

330 Fonderwhite Rd. Lebanon, PA 17042
24 Hr. Service (717) 273-4544 Radio Dispatch

REAR TRACTOR TIRES



SNOW TIRES
and
ALL-SEASON
TIRES

Most Popular
Sizes On
Sale Now

- COMPLETE RADIAL INVENTORY
- TRUCK TIRES IN ALL SIZES

COMPLETE ON THE FARM TRUCK
AND TRACTOR TIRE SERVICE

LEOLA TIRE SERVICE, INC.

717-656-2574 258 W. MAIN ST., LEOLA, PA



STRIKE
IT
RICH!

SELL
IT
WITH
A

LANCASTER
FARMING
CLASSIFIED

