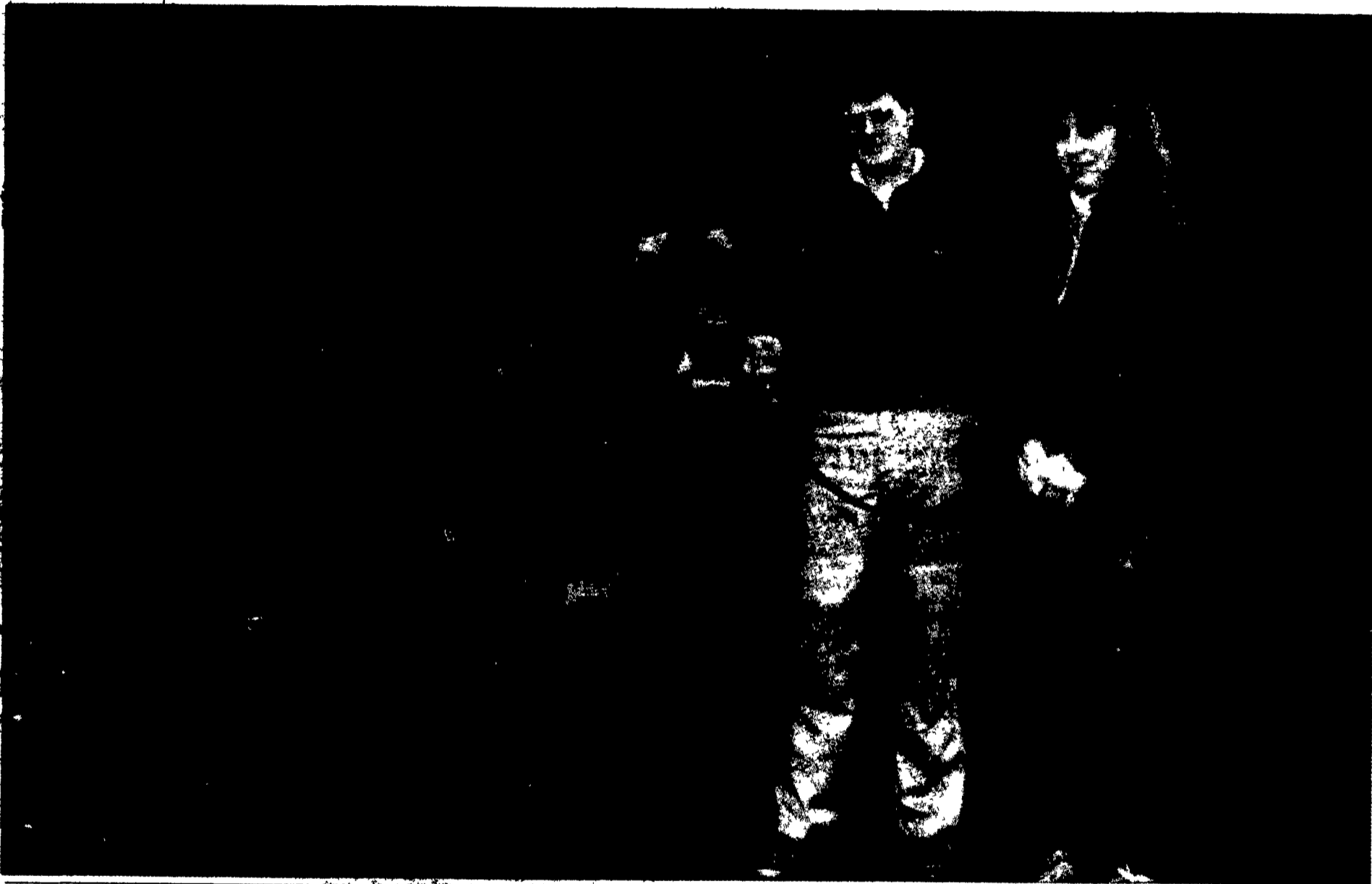




Welcome To The Pennsylvania Farm Show January 8 to 13



Snyder Named Secretary Of Livestock Assn.

HARRISBURG — Beverly Snyder has accepted the position of executive secretary for the Pennsylvania Livestock Association, according to Tom Calvert, president of the PLA. The Pennsylvania Livestock Association, which has been in existence since the early '50s, has the purpose of developing the full agricultural and soil resources of Pennsylvania by promoting the production, marketing, processing, and maximum use of beef cattle, sheep, swine, and horses within the state.

(Turn to Page A21)

Visit
Lancaster Farming
At Farm Show
Booth No. 274.

Also
See Index For Farm
Show Features In This
Issue on Page A-3.



Fultonway Glendell Abbekerk State DHIA Record Cow Purchased At Nittany Lion Fall Classic

ENON VALLEY (Lawrence) — The highest 1988 individual DHIA production record in Pennsylvania for both milk and butter fat was made by Fultonway Glendell Abbekerk for Trotacre Farms of Enon Valley in Lawrence County.

The record: 7y 305d 39,067m 4.5% 1754f 2.9p. Abbekerk, owned jointly with Roger Pertl of Slippery Rock in Butler County, is classified VG-89. Bred by J. Mowery Frey Jr., Lancaster, the new production champion was purchased in the first Nittany Lion Fall Classic sponsored by the students of the Dairy Science Club at Penn State University. Trotacre Farms also had the top Guernsey milk production record. Dolly Runs FB Jay EX produced: 10y 305d 26,173m 3.8% 1080f 3.0p.

As part of the extended circulation of this Farm Show Issue, the lists of the top herd and individual records of all breeds in milk, butter fat and protein are published on Pages E-2 to 12.

John and Cindy Batchelder of Oxford, like many, are on their way to the 73rd annual Farm Show. Here the Batchelders pose with My-T-Fine Grace, the Jersey grand champion of the 1988 show.

Farm Show Competitors Exhibit Pride In Ag

BY PAT PURCELL
HARRISBURG (Dauphin) — The seed of the first farm show was sown in 1686 in soil which has long since been covered over by stone, sand, cement or macadam in

the city of Philadelphia, not Harrisburg.

Benjamin Franklin was credited with initiating the spirit of pride which sparked the first agricultural

(Turn to Page A18)

York Farm Credit Groups Merge

YORK — South Central Pennsylvania's two leading agricultural financial institutions, the Production Credit Association of York and Federal Land Bank Association of York, were merged to form York Farm Credit, ACA effective January 1, 1989,

announced Jay V. Rush, continuing president and CEO.

The merger of the PCA and the FLBA of York into the York Farm Credit, ACA is part of the implementation of wide sweeping changes under the Agricultural

(Turn to Page A20)

Rohrer, Hollinger Repeat At Tobacco Show

BY LISA RISSER
For the third year running, Donald M. Rohrer of Lancaster claimed a championship title at the Lancaster County Tobacco Show for his Pennsylvania-type tobacco.

Sharing top honors with Rohrer in the open classes was Keith Frey of Washington Boro for his win-

ning hand of Maryland-type, top-third tobacco.

In the youth division, Jeff Hollinger, 17, of Willow Street, repeated last year's performance by taking home the grand champion hand of Pennsylvania-type tobacco. Becky Barley, the

(Turn to Page A20)