

'79 Dodge 3/4 ton pickup, 400 engine, PS, PB, auto., needs body work, \$850. 717-949-3074. 703-879-9926 early mornings & late evenings.

'79 Chev. pickup, Scottsdale, silver/burgandy, V8, auto., PS, AC, one owner, excellent condition, \$2,800. 215-857-3949 after 7 p.m.

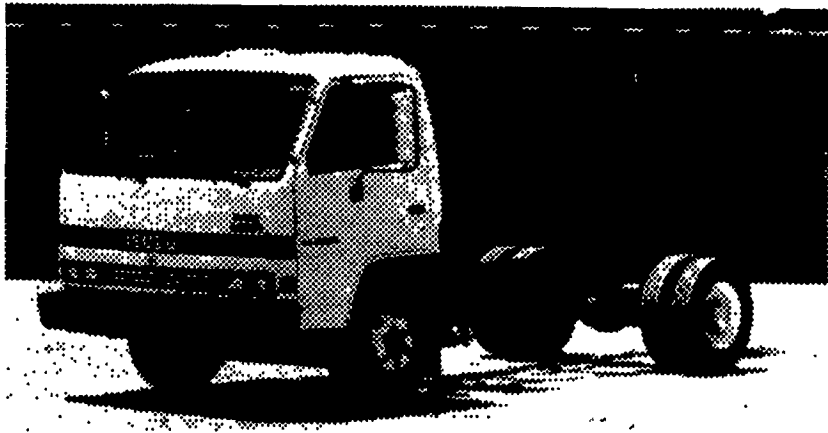
1988 Mitsubishi motor, automatic transmission, radiator with 4,000mi out of 11,000 GVW, \$2,800. (215)683-7943.

1987 Ford F250 XLSuper cab, 351 auto., PS, PB, air, AM-FM, dual tanks, 8,800 GVW, red & white, 11,000 miles, excellent condition, \$13,500. 717-733-2873

1983 Delorean stainless steel body, 5 speed overdrive, 1,400 miles, \$23,500. (717)865-7447.

When It Comes To
TRUCKS
WE MEAN BUSINESS!
ISUZU TRUCKS

1988 ISUZU NPR CAB AND CHASSIS



INCLUDES: 126 HP Turbo Diesel, 5-Speed, Power Steering, Power Brakes, Tilt Steering, Exhaust Brakes, 33 Gallon Fuel Tank, Radial Tires, 13,250 GVW. Mount the body of your choice. Stk. #3059

\$15,283

1989 ISUZU NRR



INCLUDES: 154 HP Diesel, 5-Speed, Power Steering, Power Brakes, 33 Gallon Fuel Tank, Three Man Seating, Radial Tires, 147 Inch Wheel Base, 16,000 GVW. Stk. #3062

\$17,978

NEW HOLLAND

ISUZU COMMERCIAL TRUCK CENTER

508 W. Main St. (Route 23) New Holland, PA

(717) 354-4901

1-800-642-8605

Hours: Monday thru Friday 8 am-9 pm; Saturday 9 am-5 pm

35 TRUCKS & TRAILERS

18x7' Moritz gooseneck stock trailer, medium blue, 2 slat w/big slider window, 7.50x16 rubber, list \$5,815.; special sale price, \$4,815. Only one left. 717-597-5611

1940 Chevy pickup, needs restoration, best offer. Daytime, 717-575-1591. After 6pm, 717-626-6980

1973 Ford Cattle Truck w/350 engine, 4-speed, PS, good shape. Stump Acres, 717-792-3216, York Co.

1978 GMC Brigadier, 238 Detroit, 5 spd/2 spd rear, P/S, air brakes, 10.00 tires, 151" CA, clean! \$8,500. Firm. 609-769-3183

1979 GMC Brigadier C&C 204WPa. 138 CA. 3208 Cat 5SP trans. 2SP rear 35,000 GVW, PS, air, brakes, AM/FM radio, excellent condition \$10,500. 717-367-1252 or 653-1087.

1979 IH triaxle dump truck, 8V92 Detroit 430HP, 19 1/2" alum. dump body, 11-24.5 tubeless radials in good condition. (717)426-2431.

30' aluminum feed dump trailer with 6' sides, roof and air lock, \$8,900 (717)649-5992.

'85 Chevy C20 Suburban 9 passenger, 350 4 spd., PS, PB, AM-FM, 38,000 miles, \$7,900. 717-733-2873

'86 Chevy HD C20 pickup, 350 auto., PB, PS, air, AM-FM, cruise, 29,000 miles w/ fiberglass topper, Class III hitch, 8,600 GVW, excellent condition, \$8,975. 717-733-2873

'86 Chevy HD C20 w/new Reading utility body, 350 4 spd., PS, PB, AM-FM, 8,600 GVW, excellent condition, \$9,400. 717-733-2873

'86 Dodge 250 HD, 3/4 ton, 4x4, 360 4 spd., PS, PB, AM-FM, 8,510 GVW, 7,000 miles, like new, \$9,800. 717-733-2873

'86 Ford F250 3/4 ton pickup, 300 6 cyl., HD 4 spd., PS, PB, AM-FM, 36,000 miles, \$7,600 717-733-2873

'86 Ford F250 3/4 ton, 300 6 cylinder, HD 4 spd., PS, PB, AM-FM, \$6,900. 717-733-2873

**FOR SALE
FRUEHAUF
STOCK TRAILER**
Good Cond., Good Tires, 8 Ft. High, 45 Ft. Long
1972 WHITE
10 Wheeler, 3 Axles Trucks, With Prentice 120 Ldr.
In Good Cond.
1972 FRANKLIN
Skidder Mdl. 6598
Good Cond.
717-938-2473

'86 Ford XL F250 Super Cab, 300 6 cylinder, 4 spd., PS, PB, cruise, tilt, AM-FM cassette stereo, dual tanks, 8,800 GVW, 31,000 miles, excellent condition, \$10,500. 717-733-2873

'87 Chevy C30 dual whl. w/9' Stahl utility body, 350 4 spd., PS, PB, AM-FM, 500 miles w/factory warranty, like new, \$13,900. 717-733-2873

'87 Chevy C20 w/new Reading utility body, 350 auto., PB, PS, 8,600 GVW, 17,000 miles, like new, \$12,500. 717-733-2873

'87 Chevy HD C20 3/4 ton, 350 4 spd., PS, PB, AM-FM, 8,600 GVW, dark blue, \$7,900. 717-733-2873

'87 F150 Super cab, XL 300, 6 cyl., fuel injection 30,000, \$7,400. Walker's, Somerset Co., 814-893-5589.

'87 Ford F350, 6.9 diesel, 5-speed transmission, 11' alum. bed, 5th-wheel setup. (215)267-8116, leave a message.

'88 Chevy C30 dual whl. w/12' Reading stake body, 350 4 spd., PS, PB, new w/factory warranty, \$13,500. 717-733-2873

'88 Chevy C30 Silverado, dual whl., 4x4, 454 FI, auto., PS, PB, PW, PDL, cruise, tilt, air, trailering package, AM-FM cassette stereo, 11,000 miles, like new, \$16,900. 717-733-2873

'88 F150 300 6 cylinder, fuel injection, 4 WD, 5 speed, 10,000 miles, \$9,300 cash. Walker's, Somerset Co., 814-893-5589.

'88 Ford F250 3/4 ton Super cab, 300 6 cyl., EFI, 5 spd., PS, PB, AM-FM, dual tanks, 8,800 GVW, 18,000 miles, \$11,500. 717-733-2873

'88 Ford F350 4 door crew cab, 460 EFI, 4 spd., PS, PB, air, AM-FM, dual tanks, 9,200 GVW, 6,000 miles w/balance of factory warranty, like new, \$14,800 717-733-2873

Cinder spreader box for large SA dump, complete, own engine, controls to cab, \$1200; 5th wheel stock trailer, 22' long, \$1200. 215-294-9548, Bucks Co.

Covers for anything TIRONIE'S TARPS 717-584-2928 anytime.

FOR SALE: (2) double deck livestock trailers. (1) 1974 Wilson 43'; (1) 1978 Wilson 44'. Both have new tires & brakes. Ready to go. 717-673-3448.

For Sale: 1985 Wri-Ro Gooseneck cattle trailer, 6x16, good condition, \$2,300. 717-866-6167.

For Sale: 74 White Road Boss, less than 100,000 miles on motor, 318 D.D. 10-speed, 34,000# rears, \$4,800. 717-469-0434.

For Sale: '75 IH 1800 load star, 392 engine, 5speed, good condition, 17' twin hoist w/haysides, new 10 20 tires and paint. Call evenings (215)682-6621.

For Sale: INT 2110 lime truck, 10' Stoltzfus lime or fertilizer spreader, oil motor driven, new paint and tires, in excellent running condition. (215)682-6621.

For Sale. Transfer Trailers, all sizes; Demolition Dumps; Used trucks, agricultural dump bodies & trailers, economy grain dumps, rollbacks & log trailers. Keith walking floors, sold & serviced. 814-623-9696 or 814-623-8696



GIGANTIC SELECTION
In Lancaster Farming's CLASSIFIEDS

1978 Int. 24' rollback truck w/95,000 miles, real nice condition.
717-943-2131