



**NEW TRACTORS**  
**CASE-IH**  
 235 hydro 2WD  
 245 4WD turf tires w/ loader  
 585 4WD, (special price)

**USED TRACTORS**  
 IH 424 G  
 Farmall Cub w/New Woods 60" Mower & Snow Plow  
 Farmall Cub w/22 Mower  
 Farmall Cub Loboy w/ Mower & 54" Blade  
 Used Scout 1979 Low Mileage, Auto 345 Plus Air

**NEW EQUIPMENT**  
**CASE-IH**  
 2200 Loader for 385-485 Tractor  
 2250 Ldr. w/72" Bucket  
 7 QA Ldr. for 200 Series Tractor  
 10 QA Ldr. for 200 Series Tractor

**NEW OTHER EQUIPMENT**  
 Woods 750 Backhoe w/18" Bucket  
 Woods RM500 Rear Mtd. Mower  
 Woods RM600 Rear Mtd. Mower  
 Woods M54, 5' Rear Mtd. Mower, Special Price

**LAMB'S FARM MACHINERY**  
 Thorndale, PA  
 Phone 215-269-2676



**WHITE FARM EQUIPMENT**  
**G & D REPAIR**  
 Your Factory Authorized White Dealer  
 RD 5 Penryn Rd., Manheim, PA 717-664-2207

**Fall Special**  
 W.F.E. 2-65 2 wd Tractor Selling  
 At A Price You Can Not Afford To Miss

*Quality Is Our Game - Service Is Our Aim*  
 We Wish Everyone A Prosperous New Year

**NEW TRACTORS**  
 140 2WD  
 140 4WD  
 2-65 w/Loader  
 43 4WD  
 37 4WD  
 21 w/Turf Tires

**USED TRACTORS**  
 JD 4440 P.S.  
 JD 28 ~~SOLD~~ chnl, Nice  
 Oliver 1755D Complete Engine Rebuilt  
 Ford Jubilee (nice)  
 JD 60

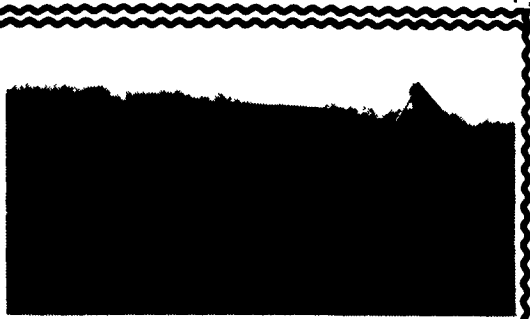
**MISCELLANEOUS**  
 Set 18.4x38 Duals, 9 Bolt Hubs  
 New Material Buckets To Fit JD Loaders  
 145-146-148-158  
 48-58 in stock  
 JD 343 Com Head  
 1 Set of Pallet Forks  
 1 Used ~~SOLD~~ rear tractor tire

**TILLAGE EQUIPMENT**  
 New White 3-4-5 btm. plows

New White 435 disk chisel  
 New White 273 Disk 17"10"  
 (2) New Kewanee Field Cultivators 15' & 18" Disk 17 ft.  
 New Kewanee 1175 Disk 17 ft.  
 New Kewanee 775 Disk 14 ft.  
 Used JD 210 disk  
 Used 7 Tooth Glencoe Chisel Plow  
 IH 450 3 Bottom Mtd. Plow Auto/Reset

**HARVESTING EQUIPMENT**  
 New 8-10-12 ton running gears  
 New Hay Tedders  
 New Bale Wagons  
 New Forage Boxes  
 Used NH 890 Harvester w/5 Ft. Hay P/U & 2R Com Head  
 Oliver 25 Combine

**PLANTERS**  
 New White 4&6 R No-til  
 Used JD 7000 6R w/Dry Fertilizer & Monitor



**JD 310**  
 w/new rubber, v.g. cond.  
**\$7,800**  
 301-833-9091

**Martin Tractor**  
 RD 2, Box 247 Newville, PA 17241

**Used Tractors**  
 Ford 6700 excel.; Oliver 1650, 770, 77; MM 950; Fordson Major w/loader; Year round cab for IH 706;

**Currently Dismantling Tractors For Parts**

**AC:** WD, D19, 5040, XT190, 200, 7040;  
**CASE:** VC, VAC, SC, 600, 700, 730, 870, 1070; **DEUTZ:** 5506; **FORD:** 851, 971, 4000, 5000, 6000, 9600; **IH:** H, M, Super C, UD9 power unit, B275, 300, 350, 400, 404, 450, 460, 504, 544, 560, 584, 656, 666, 706, 806, 1026, 1206, 1256, 1586; **JD:** A, B, 40,50, 60, 520, 620, 720, 2010, 2020, 2430, 2510, 3010, 3010, 4010, 3020, 4020, 4040, 4630; **MF:** 65, 85, 165, 175, 178, 180, 1080; **MH:** 44; **MM:** 4 Star, 5 Star, Jetstar 3, 445, 602, 670, G1000; **Oliver:** 60, 66, 70, 77, 88, 770, 1450, 1550, 1600, 1650, 1750, 1800, 1850, 1855, 1950, 1955.

717-776-7542  
 No Sunday Calls Will Ship UPS  
 No Out Of State Personal Checks

**Cowan Equipment**  
 Martinsburg, PA  
 814-793-4293 Day or Evening

JD 2950, 38" rubber, excellent  
 JD 2550 w/loader  
 JD 4240, cab & air, quad range  
 JD 2940, cab & air  
 JD 2940, 4 WD..... \$15,500  
 JD 2940, 2 WD, sharp ..... \$13,000  
 JD 2840, excellent  
 JD 2640, 1980, sharp  
 JD 4430, power shift, fender tractor  
 JD 4030  
 JD 4020, p~~SOLD~~ shift, side console  
 JD 4020, original paint, narrow front ..... \$6,750  
 JD 3020 diesel  
 Oliver 1850 diesel ..... \$6,000  
 IH 1066, New torque, excellent ..... \$7,500  
 IH 560 diesel  
 Farmall 340 w/2 btm. plow  
 AC 200 ..... \$4,500  
 MF 124 baler w/kicker  
 JD 450 w/blade ..... \$8,750  
 JD 350B Crawler Loader  
 JD 450 Crawler Loader  
 JD 450B Crawler Loader  
 JD 450B w/6 way blade  
 JD 450C w/6 way Blade  
 JD 310A Backhoe, 78 model  
 Bobcat 825 diesel  
 Bobcat 643 diesel  
 Roll guard for 2950 ..... \$650  
 JD roll guard cab ..... \$1,000

**MOVE MOUNTAINS WITHOUT MOVING A FOOT.**

Case Uni-Loader® skid steers not only out dig, out lift, out carry and out load most others they also take a big load off your feet. That's because speed, direction and all loader functions are controlled by two hand levers. You can maneuver easier and work faster. There are other advantages, too: self-leveling loaders, simple external chain-tension adjustment, separate hydraulic and chain/sprocket oil systems reduce maintenance and downtime. Let your hands do the working with a Case Uni-Loader skid steer the easy way to get a handle on tough chores.

**Choose From These Models...**

|         |         |
|---------|---------|
| • 1816  | • 1825  |
| • 1835C | • 1845C |

See us today for Uni-Loader® skid steers, with convenient one-stop service and flexible financing programs.

**See us for Uni-Loader® skid steers**

**Special Prices On All Models Case-IH Skid Steer Loaders**

**Extra Special Price On 1835C Gas Models Only!**

**ZIMMERMAN'S FARM SERVICE**  
 1/2 Mile West Off Rt. 501 On School Rd., Bethel, Pa.  
 717-933-4114

**NEW! BOLTS IN STOCK NEW!**  
 By The Pound

**USED EQUIPMENT**

|   |   |  |
|---|---|--|
| <p><b>TRACTORS</b></p> <ul style="list-style-type: none"> <li>• Long 42 Hp. w/Loader</li> <li>• Case 995 w/Cab</li> <li>• Case 430</li> <li>• Case 1030</li> <li>• Case DC Tractor</li> <li>• Case 2390 Tractor</li> <li>• 1390 Case Tractor</li> <li>• White 2-105 Tractor</li> <li>• David Brown 990 w/Loader</li> <li>• Oliver 1755</li> <li>• IH 3388</li> <li>• IH 3783</li> </ul> <p><b>LOADERS</b></p> <ul style="list-style-type: none"> <li>• Bobcat 731</li> <li>• Case 1830</li> <li>• Case 1845 Diesel</li> <li>• Case 580D Loader Backhoe- Like New!</li> <li>• Case 1830 Uni-Loader</li> <li>• Owatonna Skid Loader—\$1,500</li> <li>• NH 555 Skid Loader</li> <li>• JD 70 Skid Loader</li> </ul> <p><b>HARVESTING EQUIPMENT</b></p> <ul style="list-style-type: none"> <li>• Hesston 2000-150 Harvester</li> <li>• NI Unisystem, 702 Diesel, 710 Combine &amp; 760 Harvester</li> <li>• NI 705 Uni-Tractor</li> <li>• NI 768 3-Row Head</li> <li>• NI 709 Uni-System</li> <li>• NI 315 Sheller</li> <li>• NI 737 Husking Bed</li> <li>• NI 838 Husking Bed</li> <li>• NI 767 Super Chopper</li> <li>• NI 323 1-Row Corn-picker</li> <li>• NI 325 12 Row Husking Bed</li> <li>• Gehl 800 Harvester</li> <li>• Int. 234 Picker</li> <li>• NH 774 4-Row Cornhead</li> </ul> | <p><b>HAY EQUIPMENT</b></p> <ul style="list-style-type: none"> <li>• IH 1190 Windrower</li> <li>• NH 469 Windrower</li> <li>• NH 479 Windrower</li> <li>• NH 488 Windrower</li> <li>• NH 499 Haybine</li> <li>• Hesston PT 10</li> <li>• Hesston 1010 Windrower</li> <li>• Hesston 1090 Windrower</li> <li>• Hesston 1091 Windrower</li> <li>• Case 650 Windrower</li> <li>• NI Rake</li> <li>• NI 456 Round Baler</li> <li>• NI 484 Round Baler</li> <li>• IH 27 Baler</li> <li>• IH 445 Square Baler</li> <li>• NI 565 Square Baler</li> <li>• 7 Hay Wagons</li> <li>• Ford 618 Blower</li> <li>• Hesston 820 12' Head</li> </ul> <p><b>TILLAGE</b></p> <ul style="list-style-type: none"> <li>• Rhino 7-Tooth Soil-Saver</li> <li>• IH 6-16 Auto Reset Plow</li> <li>• IH 10 Ft. Disc</li> <li>• Int. 2-Bot. Trailer Plow</li> <li>• JD 18 Ft. Field Cult.</li> <li>• 7-Tooth Soil Saver</li> <li>• Case 16" Reset Plow, 6 Bottom</li> <li>• Case Disc Harrow, 10'</li> <li>• Case 13' Disk, F21</li> <li>• JD 210 Disk</li> <li>• Kewanee 10 Ft. Disk</li> <li>• Oliver 22' Disk</li> <li>• Oliver Disk</li> <li>• Used Cultipacker</li> <li>• Vicon Rotary Harrow</li> </ul> | <p><b>MISCELLANEOUS</b></p> <ul style="list-style-type: none"> <li>• NH 40 Ft. Elevator</li> <li>• King Wise 32' Elevator</li> <li>• NH 36 ft. Elevator</li> <li>• Gehl 99 Blower</li> <li>• IH 56 Blower</li> <li>• Automatic Roller Mill</li> <li>• IH No. 10 13-Disc Drill</li> <li>• JD 7000 4-Row Planter</li> <li>• 4-Row Cole Corn Planter</li> <li>• 6 Used Spreaders</li> <li>• Scavenger 1263 Manure Spreader</li> <li>• Scavenger 1678 Manure Spreader</li> <li>• NI 224 Spreader</li> <li>• Gehl 350 Spreader</li> <li>• Martin 1575 Spreader</li> <li>• 500 Gal. Century Sprayer</li> <li>• Weaverline Cart, 30 Bushel</li> <li>• IH 510 16x7 Grain Drill</li> <li>• Ontario Drill</li> </ul> |
|---|---|--|

**HESSTON FARM EQUIPMENT**

**NEW SPECIAL NEW IDEA 404 WHEEL RAKE \$1,250**

**ZIMMERMAN'S FARM SERVICE**  
 1/2 Mile West Off Rt. 501 On School Road, Bethel, PA  
 Phone 717-933-4114

**KELLY RYAN**  
**BIG BAGGER**

1-8' KELLY DEMO  
 8-9' 2 WH. BAGGERS  
 9-10-12' OVERBEAM  
 GENERALSTOR BAGS  
 +B/W BND TRCH. COVERS  
 KIDD R-Sq. Bale CHOPPER  
 4 & 6' Sizes  
 CUSTOM BAGGING  
 New 8' Kelly \$12,445  
 FOB Blair, Nebraska

**AG PRODUCTS CO., INC.**  
 Ph. 717-328-3177

**J.L. Hollinger & Sons Inc.**  
 Rt. 72 North Manheim, Pa.  
 (717) 664-2444  
 after 5 (717) 665-2354

- 1 Case 580C, open rops, standard backhoes \$11,500 each
- 1984 Case 580E, 1200 hrs., standard backhoe, open rops
- 1987 Bobcat 743, low hrs., 36 HP Kubota diesel engine, flotation tires, \$10,500
- 1983 Koehring 1050 skid-loader, 1700 hrs., flotation tires, 38 HP Kubota diesel, \$7,500
- 1979 Bobcat 825, 42 HP Perkins diesel engine, good tires \$6,750
- 1984 Case 480E tractor loader backhoe, 400 hrs. Call
- 1975 Cat 955L Crawler loader, GP bucket, \$24,500
- 1979 Case 580C tractor loader backhoe with cab \$12,900
- 1979 Case 450B crawler loader backhoe, \$14,000