

HOOBER
C B HOOBER & SON INC
INTERCOURSE, PA

YEAR-END USED EQUIPMENT SALE

PLOWS



IH 55 Chisel Plow, 11 Shanks, 32" Gauge Wheels (T3869)



Landoll 7 Shank Slicer Chisel, 11Lx15 Tires (T3504)



Glencoe Soilsaver, 11 Shank, Good (T3139)



Landoll, 15" Shank Slicer-Chisel, 18" Slicers, Buster Bar Finisher (T3274)

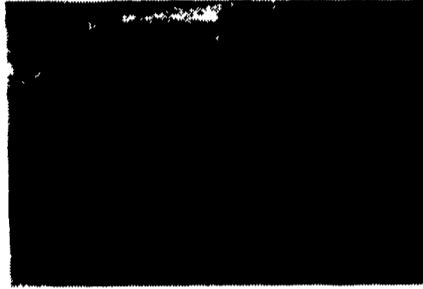


John Deere 1700 Mulch Tiller, 13 Shanks (T3651)

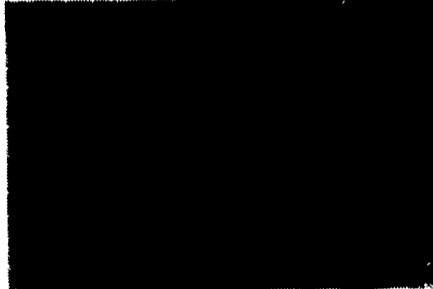
TRACTORS



Minneapolis-Moline Model 1600 4 WD, Diesel, Dual 18.4x34 Tires, Cab (W3389)



IH F1086D Tractor, Diesel, Gear, T/A, 11:00x16 & 20.8x38 Tires, Dual PTO, 3 Pt. Hitch, Cab w/Air, 2 Valves (W3849)



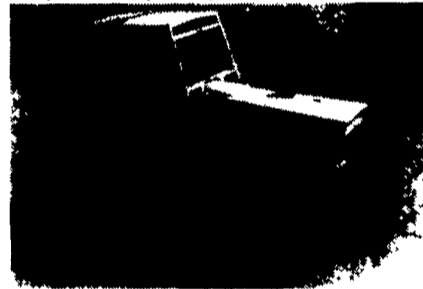
IH F1086 Diesel, Gear, TA, 18.4x38 Tires, Dual PTO, Cab w/A/C (W3500)



IH F1086D Tractor, Diesel, Gear, Cab, Sharp (W3691)



IH 3588 2+2, AC, TA, 18.4x38 Dual PTO (W2244)



Case 1370 Diesel, Gear, 20.8x38 Tires, Cab w/AC, 1000-540 PTO (W3429)



IH F966 Diesel, 16 Spd. w/TA, 18.4x38 Tires, 115 HP, Excellent Condition (W3581)



White 4-150, 4-Wheel Drive, CAT Engine Cab w/Air & Heat, 1000 RPM PTO (W3295)



IH F1066, Diesel, Gear, T/A, 540/1000 PTO, 20.8x38, 88, Good Mechanically (W1715)



Ford 5000 Gas, Gear, 2840 Hours, 18.4x30 Tires, 540 RPM PTO, Wide Front (W3562)



AC Model B, Gas, Gear, 540 PTO, 11.2x24 Tires, (W3275) Price \$850



IH Farmall H, Gas, Gear, 540 RPM PTO (W3421)



IH F400 Gas, Gear (W3807)



IH F656, Gas, Gear, 540 PTO, Narrow Front, 15.5x38 Rear Tires (W3615)



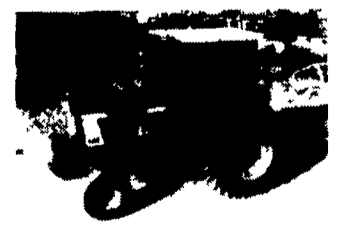
IH 1656, Diesel, Hydro, 540 PTO, Wide Front, 2000 Loader (W3578)



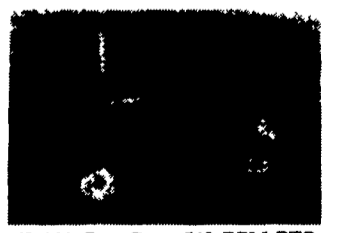
IH F706D Gear, Dual PTO, 18.4x34 Tires TA (W2925)



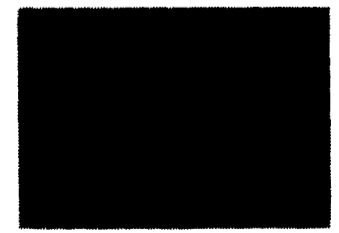
IH F1066 Diesel, Gear, 18.4x38 Tires (New), 2 Valves, 3 Point Hitch (W3806)



IH F1066 Diesel, Gear, 20 8x38 & 10 00x16 Tires, 2 Valves, 540/1000 PTO, Year-A-Round Cab (W3784)



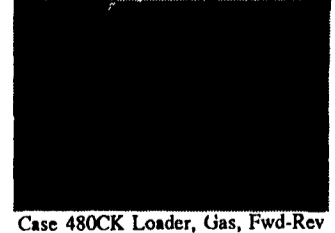
IH 464 Gas, Gear, 540 RPM PTO, 6:00x16 & 13.6x28 Tires, 3 Point Hitch (W3850)



Case 1835B Uniloader, Diesel, Hydro, 10.00x16.5 Tires, 795 Hours (W3827)



IH F656 Diesel, Hydro, Wide Front, 16.9x30 Tires, 540 PTO, 3 Point Hitch (W3369)



Case 480CK Loader, Gas, Fwd-Rev Transmission, 540 PTO, Cat I 3 Point Hitch, 13x24 Tires, 60" Material Bucket, 2 Lever Loader Control (W3871)

All New & Used Products
Backed By Hooper
Parts & Service

(717) 768-8231

HOOBER

C.B. HOOBER & SON INC.

INTERCOURSE, PA

