

market and auction news

Lancaster Livestock

Auction

Monday, Dec. 6

Report Supplied by USDA

Cattle Calves Hogs Sheep Goats

Monday's Receipts

883 103 322 834 766

Monday's Auction

955 102 259 912 758

Last Monday's Auction

986 110 492 568 407

Last Year's Auction

998 124 681 866 649

CATTLE: SLAUGHTER STEERS UNEVEN, CHOICE STEADY TO WEAK, SELECT AND LOW CHOICE MOSTLY 1.00 LOWER; SLAUGHTER HEIFERS 1.00-1.50 LOWER; COWS FIRM TO 1.00 HIGHER; BULLOCKS FULLY STEADY; BULLS 1.00-2.00 HIGHER. SUPPLY INCLUDED 62% SLAUGHTER, 13% SLAUGHTER HEIFERS, 16% COWS, WITH BALANCE BULLS.

SLAUGHTER STEERS: HIGH CHOICE AND PRIME 2-4 1125-1375 LB. 73.75-74.85, COUPLE HEAD 75.25-76.50; CHOICE 2-3, FEW 4 1050-1400 LB. 71.00-74.00; SELECT AND LOW CHOICE 2-3 1100-1400 LB. 67.00-71.75, INCLUDING AROUND 60 HEAD 1050-1250 LB. RETURNED TO FEED AT 69.00-71.75; COUPLE LOTS 1350-1450 LB. 65.00-66.50; FEW CHOICE 1450-1625 LB. HOLSTEINS 62.00-64.00; FEW SELECT 1250-1550 LB. 54.25-60.00.

SLAUGHTER HEIFERS: CHOICE 2-3 1000-1275 LB. 66.00-69.00, FEW CHOICE 2 69.00-69.50; SELECT 2-3 950-1225 LB. 62.00-66.00.

COWS: BREAKING UTILITY AND COMMERCIAL 2-3 BULK 45.50-48.00, HIGH DRESSING 48.00-50.00; COMMERCIAL 3-4 BULK 44.00-46.00; CUTTER AND BONING UTILITY 1-2 LOW DRESSING 43.00-44.00, BULK 44.00-47.50, HIGH DRESSING 47.50-49.50; CANNER AND LOW CUTTER LOW DRESSING 40.00-41.00, BULK 41.00-43.50.

BULLOCKS: CHOICE 1-3 1100-1600 LB. 63.25-65.50, COUPLE 65.50-66.50; SELECT 1-2 1050-1275 LB. 57.75-61.50.

BULLS: YIELD GRADE 1 1450-1950 LB. 60.50-65.25, FEW 65.50-67.25; YIELD GRADE 2 1100-1600 LB. 58.00-60.50, LOW DRESSING 55.00-57.50.

VEAL CALVES: VEALERS STEADY, ALTHOUGH CHOICE AND PRIME NOT TESTED; SLAUGHTER CALVES STEADY. DEMAND GOOD FOR HOLSTEIN BULLS TO RETURN TO FARM.

VEALERS: HIGH GOOD AND LOW CHOICE 150-300 LB. 85.00-92.00, COUPLE CHOICE 210-310 LB. 92.00-100.00; HIGH GOOD AND LOW CHOICE 80-110 LB. 60.00-70.00; STANDARD AND LOW GOOD 60-85 LB. 55.00-60.00.

SLAUGHTER CALVES: GOOD AND CHOICE 270-470 LB. 65.00-80.00.

RETURNED TO FARM: BULK 95-125 LB. HOLSTEIN BULLS 120.00-140.00.

HOGS: COMPARED TO LAST WEDNESDAY BARROWS AND GILTS 4.00-4.50 HIGHER; SOWS STEADY, INSTANCES 1.00 HIGHER ON US 1-2. BARROWS AND GILTS: US 1-2 215-255 LB. 43.50-44.25; US 1 210-250 LB. 44.25-45.00; US 1-3 210-260 LB. 42.50-43.75.

SOWS: US 1-3 300-650 LB. 24.00-27.00; FEW US 1-2 300-450 LB. 27.50-29.50.

Vintage Livestock

Auction

Tuesday, Dec. 13, 1988

Report Supplied by USDA

Cattle Calves Sheep Goats

Today 631 878 9 2

Last Tuesday 798 1016 4 0

Last Year 689 831 4 1

CATTLE: SLAUGHTER STEERS

STEADY, ALTHOUGH HIGH CHOICE AND PRIME NOT TESTED; SLAUGHTER HEIFERS FIRM TO 1.00 HIGHER; COWS 1.00 HIGHER, INSTANCES 2.00 HIGHER EARLY; BULLS AND BULLOCKS NOT FULLY TESTED. SUPPLY INCLUDED 28% SLAUGHTER STEERS AND 64% COWS.

SLAUGHTER STEERS: CHOICE 2-3, FEW 4 1050-1550 LB. 71.00-74.00, FEW 74.00-74.75, COUPLE CHOICE 2 1150-1425 LB. 75.50-76.00; SELECT AND LOW CHOICE 2-3 1050-1425 LB. 68.00-71.60.

SLAUGHTER HEIFERS: FEW HIGH CHOICE AND PRIME 2-3 1075-1275 LB. 73.00-75.00; FEW CHOICE 2-3 1000-1250 LB. 68.00-72.10.

COWS: BREAKING UTILITY AND COMMERCIAL 2-3 BULK 47.00-48.75, HI DRESSING 48.75-51.00; COMMERCIAL 3-4 BULK 44.00-46.00; CUTTER AND BONING UTILITY 1-2 LO DRESSING 44.75-46.00, BULK 46.00-50.00, HI DRESSING 50.00-52.00; CANNER AND LOW CUTTER LO DRESSING 40.00-41.50, BULK 41.50-45.00.

BULLOCKS: FEW CHOICE 1-3 1250-1425 LB. 62.25-64.00; COUPLE SELECT 1-2 1150-1425 LB. 56.50-61.75.

BULLS: YIELD GRADE 1-2 1100-1850 LB. 55.75-58.50, COUPLE YIELD GRADE 1 59.00-61.75.

SHEEP: SLAUGHTER LAMBS FULLY STEADY; SLAUGHTER EWES FIRM TO 5.00 HIGHER.

WOOLED LAMBS: CHOICE AND PRIME 80-110 LB. 70.00-76.00, WITH SOME LATE SALES 65.00-70.00; CHOICE 60-80 LB. 65.00-80.00, FEW 120-155 LB. 55.00-65.00.

NEW CROP LAMBS: CHOICE 30-50 LB. 125.00-175.99, 50-70 LB. 100.00-125.00.

SLAUGHTER EWES: UTILITY AND GOOD 20.00-30.00, FEW 30.00-40.00; YEARLINGS AND TWO YEAR OLDS 40.00-50.00.

GOATS: ALL GOATS SOLD BY THE HEAD, LARGE FLESHY 60.00-80.00, FEW 80.00-90.00, THIN 50.00-60.00; MEDIUM 40.00-55.00; SMALL, MAINLY KIDS, FLESHY 40.00-60.00, THIN 25.00-40.00.

Lancaster Livestock

Auction

Lancaster, Pa.

Wednesday, December 14, 1988

Cattle Calves Hogs Sheep Goats

Wed's Receipts

72 12 560 120 33

Wed's Auction

47 0 436 0 0

Last Wed's Auction

23 9 329 0 0

Last Year's Auction

53 5 189 0 0

CATTLE: Insufficient volume of any one class to test trends.

VEAL CALVES: No market test.

HOGS: Compared to Monday barrows and gilts 1.50-2.00 lower; sows mostly steady.

BARROWS AND GILTS: US 1-2 210-245 lb 41.50-42.25.

US 1 210-240 lb 43.00-45.00.

US 1-3 210-260 lb 41.00-41.50.

SOWS: US 1-3 350-650 lb 24.00-28.50.

SHEEP: No market test.

GOATS: No market test.

VEAL CALVES: VEALERS STEADY, ALTHOUGH CHOICE AND PRIME SCARCE. SUPPLY INCLUDED 693 IN GRADED SALE OF WHICH 80% SOLD TO RETURN TO FARM.

VEALERS: COUPLE CHOICE 140-180 LB. 100.00-104.00, INDIVIDUAL PRIME 195 LB. 111.00; HIGH GOOD AND LOW CHOICE 200-320 LB. 73.00-80.00, 80-110 LB. 60.00-65.00, FEW 105-115 LB. 66.00-74.00; STANDARD AND LOW GOOD 60-85 LB. 52.00-60.00.

RETURNED TO FARM: 25 HEAD 120-125 LB. HOLSTEIN BULLS 120.00, 265 HEAD 90-115 LB. 132.00-141.00; 80 HEAD SMALL FRAME 100-115 LB. 115.00-119.00, 45 HEAD 90-95 LB. 90.00-92.00 AND 20 HEAD 80-85 LB. 70.00. 30 HEAD 100-115 LB. HOLSTEIN HEIFERS 127.00-128.00 AND 65 HEAD SMALL FRAME 85-105 LB. 70.00-72.00.

SHEEP: INSUFFICIENT VOLUME TO TEST MARKET.

GOATS: INSUFFICIENT VOLUME TO TEST MARKET.

New Holland

Livestock

New Holland, Pa.

Thursday, Dec. 15

Cattle Calves Sheep Goats

Today 847 571 221 14

Last Thursday 832 596 83 38

Last Year 794 644 295 75

CATTLE: SLAUGHTER STEERS FULLY 1.00 HIGHER; SLAUGHTER HEIFERS NOT FULLY TESTED; COWS 1.00 TO MOSTLY 2.00 HIGHER; BULLOCKS SCARCE; BULLS STEADY, ALTHOUGH YIELD GRADE 1 NOT FULLY TESTED. SUPPLY INCLUDED 39% SLAUGHTER STEERS AND 51% COWS.

SLAUGHTER STEERS: FEW HEAD HIGH CHOICE AND PRIME 2-4 1200-1425 LB. 75.50-76.85; CHOICE 2-3, FEW 4 1075-1450, COUPLE 1500-1610 LB. 72.00-75.00; SELECT AND LOW CHOICE 1050-1425 LB. 68.00-72.10, FEW SELECT 2-3 64.50-67.50.

COWS: BREAKING UTILITY AND COMMERCIAL 2-3, BULK 48.00-50.50; CUTTER AND BONING UTILITY 1-2 LO DRESSING 46.00-47.00, BULK 47.50-51.00, HI DRESSING 51.00-54.00; CANNER AND LOW CUTTER LO DRESSING 40.50-43.50, BULK 44.00-47.50.

BULLOCKS: COUPLE CHOICE 1-3 1150-1400 LB. 65.00-66.75.

BULLS: YIELD GRADE 1 1450-2000 LB. 60.00-63.25, COUPLE 64.00-66.25; YIELD GRADE 2 1050-1500 LB. 57.00-60.00, FEW LOW DRESSING 53.00-56.50.

VEAL CALVES: VEALERS MOSTLY STEADY. DEMAND GOOD FOR HOLSTEIN BULLS TO RETURN TO FARM.

VEALERS: COUPLE HIGH CHOICE AND PRIME 260-350 LB. 119.00-130.00; CHOICE 170-350 LB. 90.00-102.00, COUPLE 103.00-107.00; HIGH GOOD AND LOW CHOICE 135-330 LB. 77.00-90.00, 80-110 LB. 62.00-70.00, FEW 70.00-75.00; STANDARD AND LOW GOOD 60-85 LB. 50.00-62.00.

RETURNED TO FARM: BULK 95-125 LB. HOLSTEIN BULLS 110.00-140.00, FEW 140.00-145.00; SMALL FRAME 90-115 LB. 85.00-115.00.

SHEEP: SLAUGHTER LAMBS STEADY, SUPPLY INCLUDED SEVERAL 25-65 IN NEW CROP LAMBS; SLAUGHTER EWES STEADY.

WOOLED LAMBS: CHOICE AND PRIME 80-110 LB. 72.00-79.00, FEW CHOICE 110-150 LB. 61.00-68.00.

NEW CROP LAMBS: CHOICE 20-40 LB. 180.00-212.00, 40-50 LB. 135.00-184.00, AND 55-65 LB. 107.00-135.00.

SLAUGHTER EWES: UTILITY AND GOOD 22.00-32.00.

GOATS: ALL GOATS SOLD BY THE HEAD, LARGE 51.00-64.00, MEDIUM 35.00-51.00, FEW SMALL 30.00-36.00.

Lancaster County

Weekly

Lancaster, PA

December 16, 1988

Cattle Calves

This Week 2700 1565

Last Week 3330 1726

Last Year 2795 1605

CATTLE: Slaughter steers closed mostly 1.00 higher; slaughter heifers weak to 1.00 lower, although not tested late; cows 2.00-3.00 higher, instances 4.00 higher; bullocks fully steady; bulls 1.00-2.00 higher. Supply included 41% slaughter steers, 7% slaughter heifers, 38% cows, 6% bulls, with the balance feeders.

SLAUGHTER STEERS: Few High Choice and Prime 2-4 1100-1425 lb 75.50-76.85; Choice 2-3, few 4 1050-1550 lb 72.00-75.00, with some early sales 71.00-72.00; Select and low Choice 2-3 1050-1425 lb 68.00-72.10; few Select 2-3 64.50-67.50; few Choice 1350-1625 lb Holsteins 62.00-64.00; few Select 1250-1550 lb 54.25-60.00.

SLAUGHTER HEIFERS: Few high Choice and Prime 2-4 1075-1275 lb 73.00-75.00; Choice 2-3 1000-1275 lb 66.00-70.00; Select 2-3 950-1225 lb 62.00-66.00.

COWS: LO DRESSING BULK HI DRESSING Breaking Utility and Commercial 2-3 47.00-50.50 50.50-51.50, Commercial 3-4 44.00-47.00, Cutter and Boning Utility 1-2 45.00-47.00 47.00-51.00 51.00-54.00, Canner and low Cutter 40.00-43.50 43.50-47.50.

BULLOCKS: Choice 1-3 1100-1600 lb 62.25-65.50, few 65.50-66.50; Select 1-2 1050-1475 lb 56.50-62.00.

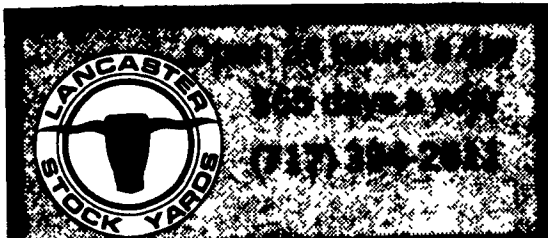
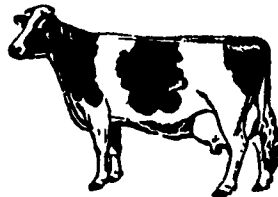
BULLS: Yield grade 1 1350-2000 lb 60.00-65.25, few 65.25-67.25; yield grade 2 1050-1600 lb 57.00-60.50, low dressing 53.00-57.00.

VEAL CALVES: Vealers steady; slaughter calves steady. Demand good for Holstein bulls to return to farm.

VEALERS: Few high Choice and Prime 195-350 lb 111.00-130.00; Choice 150-350 lb 90.00-104.00, couple 105.00-107.00; high Good and low Choice 135-330 lb 73.00-90.00, 80-110 lb 60.00-70.00, few 70.00-75.00; Standard and low Good 60-85 lb 50.00-62.00.

SLAUGHTER CALVES: Good and Choice 270-470 lb 65.00-80.00.

RETURNED TO FARM: Bulk 95-125 lb Holstein bulls 110.00-140.00, few 140.00-145.00; small frame 90-120 lb 90.00-119.00, 80-90 lb 70.00-90.00; few 100-115 lb Holstein heifers 127.00-128.00, with 65 head small frame 85-105 lb 70.00-72.00.



AUCTIONS

MONDAY

9:00 A.M. — Slaughter Bulls, Heifers, Steers, Cows
10:00 A.M. — Goats, Veal Calves, Lambs

12 Noon — Slaughter Hogs

WEDNESDAY

8:00 A.M. — Slaughter Hogs
10:00 A.M. — Slaughter Bulls, Heifers, Steers, Cows
11:00 A.M. — Veal Calves, Lambs

FRIDAY

11:00 A.M. — Stocker and Feeder Cattle

SATURDAY

8:00 A.M. — Slaughter Hogs

HOLIDAY SCHEDULE

No Feeder Sale Fri., Dec. 23

No Hog Sale Sat., Dec. 24

OPEN: Mon., Dec. 26 As Usual

Next Graded Feeder Cattle Sale

Fri., Dec. 30 - 11:00 A.M.

CLOSED: No Hog Sale Sat., Dec. 31

Open Same As Usual Mon., Jan. 2, 1989

Graded Cattle Sold in Lots of 10 or More

LANCASTER STOCKYARDS, INC.

1147 Lititz Pike Lancaster, Pennsylvania 17601

Serving The Community For 90 Years

ROPE IN SOME EXTRA CASH!

Advertise With A Lancaster Farming CLASSIFIED AD...

Phone: 717-394-3047 or 717-626-1164



VINTAGE SALES STABLES, INC.

Sale Every Tuesday 10:30 A.M.

Slaughter Cattle Auction - Steers, Bulls, Heifers, Cows, Feeder Cattle.

Get calves in early. We start to grade and weigh at 2:00.

Business Phone 717-768-8204

Home Phone 215-458-8518

L. Robert Frame, Manager Box 100 Paradise, PA

10 miles East of Lancaster on Rt. 30

B&R CATTLE CO.

RD 1, Marietta, PA 17547

Office Phone: (717) 653-8164

Specializing In Stockers & Feeders

JOHN BOWMAN Ph (717) 653-5728

RON RANCK Ph (717) 656-9849

LEBANON VALLEY LIVESTOCK MARKET, INC.

1 mile East of Fredericksburg along Rt. 22

PHONE JONESTOWN 865-2881

Flea Market Auction every Tuesday at 12:30 Tools, Eggs, Products, etc.

Buyers & Sellers Welcome

HAY, STRAW & CORN — SALE —

Every Friday at 12 Noon.

NEW SALE TIME

Starting Jan. 6, sale will begin at 11 am every Friday.

GREEN DRAGON MARKET & AUCTION

RD No. 4 Ephrata, Pa. 717-738-1117
1 mile North of Ephrata on N. State St.

Out of State Buyers - Cash or Certified Check Only