

# Cumberland Co. DHIA

## dhia Monthly Report

Pennsylvania Dairy Herd Improvement Association

September 1988

Cumberland County Dairy Herd Improvement records show that 6,703 cows in 107 herds were on production testing in September according to Duane G. Duncan, County Agent. Of the 94 official programs, 55 herds had an average fat production of 600 pounds. During the month 172 cows completed their 305 lactation with 650 lbs. of butterfat. DHIA Supervisors working with the dairymen to improve efficiency include Harold Boldosser, 130 Old Gap Road, Carlisle, PA; John Rolar, R.D. #2, Box 97, Newville, PA; Owen McCulloch, R.D. #2, Box 333, Newville, PA; and Shane Henry, R.D. #4, Box 917, Newville, PA. The following are the highest of actual butterfat in 305 days or less in the county during the month. The age listed is her age at the time of freshening.

Owner	Cow's Name	Brd	Age	Milk	Fat
Daniel L Martin Jr	35	B3	4	26,144	979
Robee Acres	Eunice	3	8	26,238	966
Mark A Naugle	Fran	3	9	22,941	960
Clifford Chamberlin	Erma	3	8	20,567	938
Alvin M Martin	78	B3	6	28,981	908
David E Gettle	Mitzie	B3	7	26,120	906
Galen & Linda Smith	Picture	3	8	17,388	870
Samuel D Shenk	Cleo	B3	5	23,380	869

Amos Z Sauder	Sheryl	3	6	23,731	867
Galen & Linda Smith	Ann	3	4	19,794	867
James E Jones	464	B3	6	24,530	864
Robee Acres	Rachel	3	4	23,134	861
	Rochell	3	4	23,058	858
Mains Acres	35	B3	6	18,737	854
Ed Brackbill-R Yost	Glenda	3	8	21,599	850
Lamar Farm	Isabele	3	6	24,170	848
Mark A Naugle	Diamond	3	6	19,670	843
J B Brymesser & Sons	531	B3	6	24,786	837
Amos Z Sauder	Thelma	3	3	21,049	837
David E Gettle	Angie	B3	6	23,795	832
Daniel L Martin Jr	50	B3	4	21,730	828
Frank J Yost	Francis	3	4	19,254	827
Oscar Nealy & Sons	23	3	4	20,444	826
J B Brymesser & Sons	753	3	3	20,063	826
Dave & Doug Lehman	269	3	6	25,517	822

### Rolling Herd Averages

Bent Creek Farm	3	12	92	20,473	760
Mt View Acres	B3	38	86	19,698	755
Cumber-Vue Farm	B3	43	91	20,128	730
J Paul Strock	3	115	89	19,867	718
David E Gettle	B3	49	86	18,454	716
Robee Acres	3	89	91	19,240	715
Betty A Zeigler & Sons	3	52	92	19,192	711
Hills-Hope-PA Farm	3	57	89	19,929	708
Daniel L Martin Jr	B3	72	85	18,838	706
Alvin M Martin	B3	63	87	19,543	702
Nevin Shughart	B3	29	88	19,887	701
Glenn W Myers	B3	66	88	18,387	692

### Lancaster Farming, Saturday, December 10, 1988-B33

Lee A Hoover Jr	B3	48	90	18,060	692
All-Mae Farm	B3	31	86	19,246	682
Sto-Ebe Farm	B3	40	86	18,530	667
Greg & Sheree Clelan	B3	38	86	18,901	660
Amos Z Sauder	B3	39	90	18,131	659
Samuel D Shenk	B3	63	86	18,096	659
Lamar & Carol					
Sensenig	B3	34	90	17,676	657
Highland Vue Farms	3	50	89	17,552	657
Berkheimer Farms	B3	167	86	17,355	657
Lamar Farm	B3	37	86	17,634	653
Donald M Leatherman	B3	44	87	18,630	651
Leroy Showaker & Son	3	82	86	17,179	649
M Thomas Sheaffer	3	63	83	17,386	647
Harry E Thompson	B3	25	86	18,237	644
Lee G Davidson	3	68	88	17,335	640
Glenn Newswanger	B3	75	86	16,806	639
Roy E Snoko	3	40	88	18,689	637
Francis R Mains	B3	68	86	17,274	635
Nathan K Ebersole	3	54	87	17,911	633
David R Walton	3	24	88	17,823	633
Leroy Chestnut	B3	57	88	17,314	631
Merrita Farms	B3	45	89	18,278	630
Martin H Miller	B3	45	87	17,604	630
Kenneth Horst	B3	56	84	19,609	628
Robert H Jamison	3	26	84	18,133	628
Fred A Hoover	B3	43	86	17,112	628
Mark A Naugle	3	57	84	17,459	626
Jack C Rolar	B3	58	91	17,359	626
Glenn & Larry Souder	B3	47	88	18,332	624
Dave & Doug Lehman	3	81	85	17,072	621
J Glenn Glesner	3	52	92	17,353	620
Clifford Chamberlin	3	40	84	15,809	620
Marlin Miller & Sons	G3	41	88	16,975	617
JB Brymesser & Sons	B3	227	88	16,634	617
J Wickard-R Hawkins	B3	60	87	17,356	615
Ridgeline-Acres	B3	59	92	17,228	612
Mrs Willard Fought & Son	B3	26	87	16,972	612
Ed Brackbill-R Yost	3	65	87	15,963	611
Lewis N Martin	B3	34	85	16,916	608
Maple Key Holsteins	B3	44	90	16,525	606
Paul O Dyarman	3	58	84	15,490	603
Mains Acres	B3	134	90	16,637	600
Lonni A Wickard	B8	34	87	15,777	600

Otto Brothers					
176	3	16,739	4.3	731	
66	4	18,445	3.6	679	
Mark A Naugle					
Fran	9	22,941	4.1	960	
Diamond	6	19,670	4.2	843	

(Turn to Page B35)

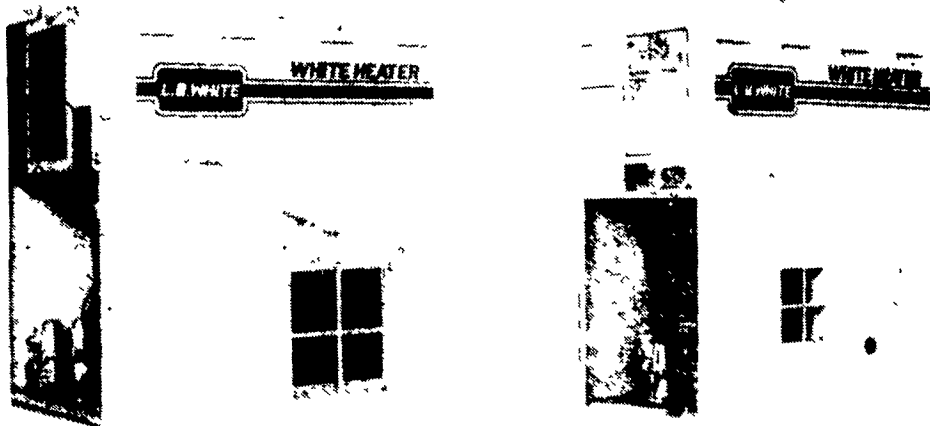
## BE PREPARED FOR WINTER

L.B. WHITE

## AGRICULTURAL HEATERS

Now Available In Stainless Steel

Now Available In Stainless Steel



### FEATURES

LB WHITE HEATERS hang in more animal confinement buildings than all other types of heaters combined.

First of all, they're designed and built for economical farm use. Since livestock and poultry barns are ventilated year-round, there's enough fresh air to take advantage of the heat and cost savings provided by a direct-fired heater. Maintenance of a rugged WHITE HEATER is so minimal that you can spend all your time doing what you do best... farming. In your shirt sleeves, if you like. Your WHITE HEATER will keep your farm building that comfortable.

- Removable access panel for easy access to high limit switch
- Integral gas pressure tap for quick testing of supplied gas pressure
- Easily removable fan wheel
- Quick-change motor mount for speedy field replacement of fan motors or blower wheels
- Pilot light operation for dependable ignition
- Stainless steel thermostat for accuracy and corrosion resistance
- Service door provides easy access to pilot light and allows burner service and replacement without removing case.

### STAR PERFORMANCE

Complies With National Safety Standards

AGA Certified

STAINLESS STEEL THERMOSTAT



- CORROSION RESISTANT
- FIELD CONVERTIBLE FOR HEATING OR COOLING
- WALL OR CHAIN MOUNT

### NOW YOU HAVE A CHOICE!

Buy our standard painted steel heater, which has a 10-year warranty on rust-through of the combustion chamber and case - OR - choose our optional stainless steel heater.

Call Now To Service Your Heater Before Winter!

Authorized Distributor Swine & Poultry Systems Specialists

## FARMER BOY AG.

410 EAST LINCOLN AVE. MYERSTOWN, PA 17067 PH: 717-866-7565

BEST IN DESIGN, PRICE AND EXPERIENCE

24 Hour Service

We Ship Parts & Heaters UPS



## Recycle The Barn People

P.O. BOX 294, ST. PETER'S, PA

Specializing in antique structures.

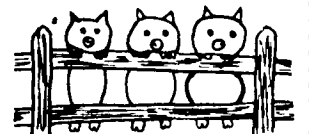
Antique Barn Frames and Historic Log Homes, Various sizes. Dismantled and ready to be rebuilt to your specs. Total construction services available.

For more info call: (215) 970-2122

## SOYBEAN ROASTING ON YOUR FARM

Don't Waste It - Roast It!

This Little Piggy Went To Market, This Little Piggy Stayed Home, This Little Piggy Had... ROASTED SOYBEANS



Make Higher Profits From All Grains. Roasting Improves TDN, Destroys Mold. Retards Toxins & Removes Moisture.

CUSTOM GRAIN ROASTING DONE IN PA. & SURROUNDING STATES

DALE L. SCHNUPP

RD 6, Lebanon, Pa. 17042

PH: 717-865-6611



ALLEN SUMMERS

703 E. Christine Rd. Nottingham, Pa. 19362 215-932-4761

DAVID N. GROFF

RD 1 Box 506C Lewisburg, Pa. 17837 717-966-3593