

Farm Women Societies

Lancaster Society 1

Lancaster Society of Farm Women Number 1 met for their monthly meeting at 1:30 p.m. on November 21 at the home of Mollie Emenheiser, East Petersburg. Roll call was answered by each member naming a color they liked to wear. Twenty-two members and four guests were present.

The December meeting will be held on Wednesday, December 7, at 12:30 p.m. at Kreider's Mannheim Restaurant. Following the meal members will tour Wheatland. Husbands and friends are invited to attend the Christmas

program in 1989.

President Landis introduced the guest speaker Sylvan Stoltzfus. Mrs. Stoltzfus is a certified color advisor and consultant. She explained and demonstrated how the proper use of color can help to improve personal appearance and self image.

On November 29, Barbara Moore will celebrate her 104th birthday. She is a charter member of Society One and has always been a staunch supporter of the Pennsylvania Society of Farm Women.

Lancaster Farm Women's Society #8 met at the Maytown Lutheran Church November 9, at 2 P.M. Devotions were led by Helen Mariner. Twenty persons responded to roll call by mentioning things they were thankful for.

The program was an interesting

Berks Executive Board

The Berks County Farm Women Executive Board met recently at the Agriculture Center with 25 women attending.

The meeting was called to order by president, Janet Schlegel.

Roll call was answered by stating whether you would vote in the November 8th election.

Bingo was held at Berks Heim recently with other activities scheduled for the new year. A Volunteer Recognition Dinner will be held on April 20, 1989 with the Festival on June 3 and 4, 1989. A Santa's Corner at the main building will be held on November 30

and informative slide presentation of Nova Scotia presented by Rev. Robert Lescalette.

The Christmas Party will be held December 7 at 12 noon at the home of Margaret Heisey, 3330 Poplar Lane, Mountville. Members should bring a salad or a dessert.

and on December 7 at the Annex. Fruit baskets will also be given to the patients for Christmas.

The 1989 County Convention will be held on October 7.

The State Convention will be held at Harrisburg on January 9 and 10.

New county officers include: Janet Schlegel, president; Judy Swope, vice president; Joyce Shott, secretary; and Wendy Lingle, treasurer.

The 1989 Spring Rally will be held on June 8 at Seven Springs, Somerset County.

New by-law books will be available in January.

Lancaster Society 20

Thursday, November 3, Farm Women #20 met at the home of Dorothy Crawford with Pauline Reinhart as co-hostess. Members voted to give \$100 to the Ralph Murray Family of Wakefield, whose home was completely burned.

We will be sponsoring Barbara Paxon for the Miss Solanco Pageant. Members were reminded of the Christmas Party at the Fire House, December 10 at 6:30. The 19 members present answered to the roll call by stating their favorite Thanksgiving dinner.

The afternoon concluded with an auction of "goodies" which were brought by the guests. The auctioneer was Vivian Hess. The December meeting will be held at the home of Arlene Fisher with Vivian Trout as co-hostess.

Berks Society 6

Berks County Farm Women Group #6 met at Nicks Chat-a-While in Mt. Penn for a meal in honor of Farm Women's Day. A new member, Marty Hephner, Oley, was installed.

Berks Society 1

Berks Society of Farm Women Group 1 held their monthly meeting at the home of Evelyn Heacock, Boyertown. Each member brought her favorite holiday dish.

Members decided to distribute fruit baskets and Poinsettias to the ill and shut in.

The annual Christmas Party will be held December 14, at 7 p.m. at the Pleasantville Diner. Secret Pals will be revealed and Christmas Gifts exchanged.

GLENWOOD METAL FORMING

809 Glenwood Drive, Ephrata, PA 17522
717-733-9590

All Panels Cut To Length Coverage - 36" Width

Our Regular Line Of 29 Gauge Metal

- * White * Barn Red * Earth Brown
- * Sand Tan * Cypress Green * Gray

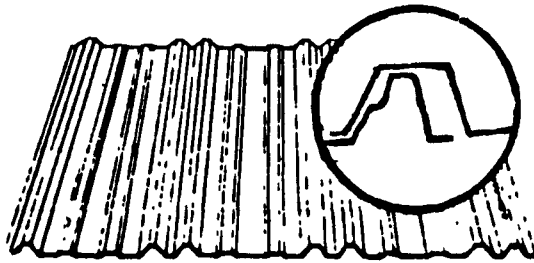
26 Gauge Metal

- * White
- * Tan * Dk. Brown
- * Gray * Lt. Blue

Bare Metal

- 26 Gauge Galvalume
- 26 Gauge Galvanized
- 29 Gauge Galvanized

SPECIAL
26 Ga. Painted
Brown Metal
\$1.50 Per Lin. Ft.



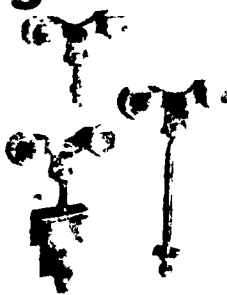
We Also Stock The Following Items

- **DOORS** Inc. Chung Thermo Doors, 4 Sizes With Mill Finish Jamb, Double Door, Door Jamb Trim and Door Track Cover
- **KLAUER** Roofline Ridgulators 10 Ft. Painted White Trin, End, Wall & Sidewall Flashing
- **MISCELLANEOUS** Guardian Features: Woodtite and Woodzac Screws and Dickson Weather Proof Nails;
- **Agri Built Windows** 24"x36".....36"x48" In Stock

ERECT-A-TRAK rolling door hardware

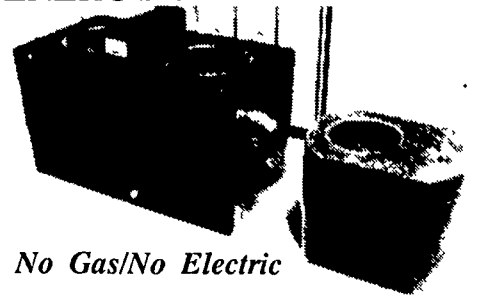


Door Trak is available in 2" increments from 8' to 20' Lengths.



Galv. Trolley Hangers

Lapp ENERGY FREE DRINKERS



No Gas/No Electric

MODEL 50040 9 Gallon
40 Gallon Can Send UPS

Proven to Work - Since 1984
Drinkers have a new unique baffled drinking design with free floating insulated Thermo-Cap manufactured from a durable poly-product. This makes it easy for all livestock to drink from. No wasted water underground.

Manufactured By

S.M. COMPANY

Sheep Hill Road, New Holland, PA 17557
7-7:30 AM/PM 717-354-9205 or 717-656-9215

Authorized Dealers

- | | |
|---|---|
| DANIEL'S FARM STORE
330 Glenbrook Rd.
Leola, PA 17540 *
717-656-6982 | SHOW-EASE STALL CO.
573 Willow Rd.
Lancaster, PA 17601
717-299-2536 |
| AUTOMATIC FARM SYSTEMS
608 E. Evergreen Rd
Lebanon, PA 17042
717-274-5333 | D&M FARM SUPPLY
RD #2, Box 728
Bedford, PA 15522
814-623-8129 |
| MIFFLINBURG FARMER'S EXCHANGE
Box 26
Mifflinburg, PA 17844-0026
717-966-1001 | STOLTZFUS FARM CONSTRUCTION
Box 244,
Unionville, PA 19375
215-388-6391 |
| ALLEN H. MARTIN
2433 Paradise Church Rd
Hagerstown, MD 21740
301-733-0458 | ROVENDALE SUPPLY
Watsonville, PA 17777
717-538-5521 or 742-7521
Toll Free PA.
1-800-232-DALE |
| NISSLEY'S FEEDING EQUIPMENT
RD #1, Box 417
Willow Street, PA 17584
717-786-7654 | MILLER'S PVC PRODUCTS
Rouzverville, PA 17250
717-762-2386

Dealers Wanted |