

**Get MOOOv'n'
with
Dairy Foods!**

Public Auction Register

Closing Date - Monday, 5 00 P M
of each week's publication

DECEMBER
SAT. DEC. 17 - 9AM Buffa-
lo Valley Produce Auction,

RD3, Mifflinburg, PA.
Annual December Con-
signment Sale of Citrus,
Lumber, Tools, Hay, Straw.

**1989 Pennsylvania Junior
Holstein Convention**

Preparations for Pennsylvania's Junior Holstein Convention
Have already begun,
So all you Juniors out there
Get ready to have some fun!

History's in the making
This Convention's the first,
If you don't attend
Our bubble will burst!

Our theme is Hawaiian
And there's no doubt,
Sun and jams
Will be found all about.

Everyone's invited
To Northwestern PA
At the Sheraton West Middlesex
To have a great stay.

February 17, 18 and 19
Is the time,
So dash over Route 80
And up I-79.

The anxious moment arises
For all on Saturday,
As the county dairy bowl teams
Finally begin to play.

During this weekend
Much more can be found,
Such as workshops for everyone
Who stops in town.

For all you Juniors
Who receive any Pennsylvania awards,
You should come on Saturday
The banquet is yours!

Dances and parties
Dairy bar and tour,
We'll have a great weekend
Who could ask for more?

1989 Outlook?

(Continued from Page A33)

Meat and Egg Outlook
Total meat production should
fall one percent from record 1988
levels, as beef supplies decline,
pork production holds steady and
poultry production rises, accord-
ing to USDA analysts. Egg pro-
duction should continue its recent
downward trend.

Weimar predicted broiler pro-
duction will climb 3-5 percent in
1989, although prices will dip
below year-earlier levels by mid-

summer. Similarly, turkey pro-
duction should expand three per-
cent; lower prices are likely by
mid-year.

He said egg prices should aver-
age 68-74 cents a dozen, up nine
cents from this year's average.
Nevertheless, producers can
expect negative returns until at
least the second half of the year.

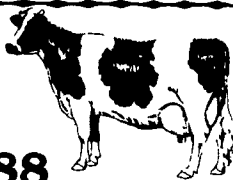
Beef production is expected to
decline seven percent; pork pro-
duction, to continue at current
levels.



**GIGANTIC
SELECTION
IN
Lancaster
Farming's
CLASSIFIEDS**

SHORT NOTICE SALE

**Red Top Farm Complete Registered
Holstein Dispersal**



92 Head Reg.
Holsteins Selling

WEDNESDAY, DECEMBER 14, 1988

At New Holland Sales Stables, Inc.
**Located 12 miles East of Lancaster, just off
Rt. 23, New Holland, Pa.**
**Complete Herd for William and Janet Gordon
Newton, New Jersey**

Rolling Herd Average of 18,936M 667F.
Cows are now averaging 58 lbs., 3.7 milk for tester.
All animals selling- 60 Cows

12 Bred Heifers
10 Open Heifers
10 Calves

Sires Represented in this herd include- 10 Chairman
6 Columbus
3 Stewart
3 Sexation
Sunny Craft Spirit
Creek Bluff Elevation Lester
Mars Tony

Special Mention of some of the better animals:

- * LORITA- A fancy 3 yr. old Chairman Est. over 29,000M near 1,000F.
- * MARIKO- Another Chairman sells fresh milking 85 lbs. made 20,033M. 900F.
- * LONNIE- Sired by Bootmaker Lee 28,456M 790F.
- * POPPY- Mars Tony dtrs. 2 yr. old Est. 20,417M 787F.
- * LARK- Columbus dtr. 3 yr. old record 284 dys. 18,230M 743F.
- * FAWN- Sired by Tony 2 yr. old Est. 17,546M 627F.

A very nice group of bred heifers including:

- * A fancy Tony dtr. due to Ned Boy. Her Kit Builder Dam 23,275M 846F.
- * Another Tony dtr. due to Crescent Mead Chief Stewart. Her dam 23,045M 615F.
- * Chairman dtr bred to Ned Boy. Her Dam 3 yrs. 285 dys 18,230M 743F.

Also Open Heifers and calves by the following Sires:

2 Walk-Way Chief Mark, Chief Stewart, Chairman, Sunny Craft Chief Spirit, Paclamar and Intreped.

"NOTE"- This is a top notch herd of Holsteins with high production. Housed in a tie stall barn. A real opportunity to buy cows and young stock from a well established home bred herd. Herd is certified and accredited. 30 day health charts. All herd vaccinations and health check-up to date.

Catalog information day of sale.

This herd to be sold at approximately 1:00 P.M.

NEW HOLLAND SALES STABLES, INC.

**Abe Diffenbach 225L
717-354-4341
Norm Kolb
717-397-5538**

**H.D. PEGRAM
TOBACCO
COMPANY**

**WILL BE BUYING
YOUR TOBACCO
88 & 89**

**PAYING TOP DOLLAR &
RECEIVING IN THE
HINKLETOWN AREA**

717-354-9715

**NEW HOLLAND
SALES STABLES, INC.**



Located 12 Miles East of Lancaster,
just off Rt. 23, New Holland, Pa.
SPECIAL DAIRY SALE CONSIGNMENTS
For
WEDNESDAY, DECEMBER 14, 1988
Helper Sale Starts At 11:00 A.M.

57 Head Holstein Cows from Adams County
10 fresh within the last 6 weeks
35 due to freshen by first of the year.
Pregnancy checked at sales barn.

See Other Consignments Page 38D

For More Information Contact:
Abe Diffenbach 225L
717-354-4341-Barn

Norman Kolb
717-397-5538