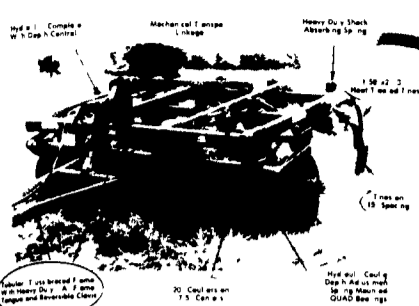


Old Price Bargains - Towaway Now!

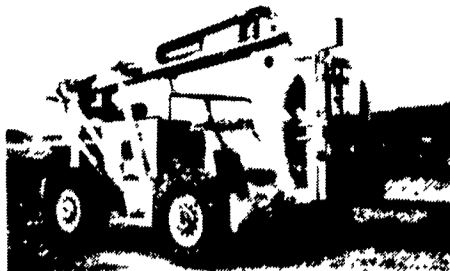


*Best Of All
More Weight
Less Cost*

No. of Shanks	5
Effective Width	6'3"
No. of Coulters	11
DBHP Requirements	75
No. of Wheels	100
	2

New Demo - Only \$3,850

If You've Got Big Jobs This Brute Can Probably Do It!



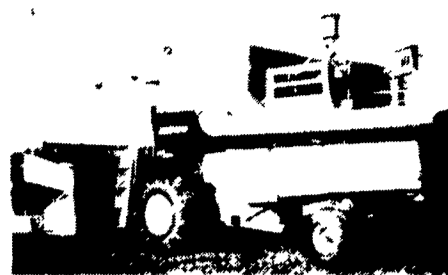
1982 Pettibone Super 88

Power By 4-53 Diesel Power Shift Transmission Lift 34 Feet 8000 Lbs. Lift 42 Feet 2500 Lbs. Extend Forward 17 Feet 4 Wheel Drive With Crab Steering Front Stabilizers Hydraulic Leveling For That High Lifting

Get A Rough Terrain Forklift At A Right Price \$33,900

The Price Is Too Low To Advertise Stop In And Make A Deal!

You'll Like This One If You Are Looking For A Clean Quality Machine!



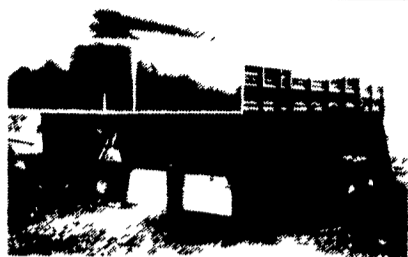
1980 Model New Holland TR85
Hydrostatic Drive, Cat Diesel Power, Cab, Air Conditioner, Heater.

Almost New 6 Row Low Profile Cornhead Used For Approx. 800 Acres And 15' Flex Grainheader With Electric Controls, 2 Knives, 6 Bat Reel With Hydraulic Adjustment.

Get A Super Year-End Deal!

GET THIS!

New Gooseneck Stock Trailer, 16' Long With Lots Of Fine Features!



Full Nose Gooseneck, Center Gate, Skirting, 7" Height, 2-3500 Lb. Axles, Brakes On All 4 Wheels, P225x15" Tires, Penna. Required Safety & Breakaway Kit, Combination Rear Door & Swinging Gate 36" Width, 2" Ball, Angle Iron Frame

~~\$4,670~~ **\$4,595**

**IDEAL FOR SMALL GRAIN AND EAR CORN AND FERTILIZER HANDLING
MAKE YOUR PURCHASE NOW AND BEAT THE PRICE INCREASE!**

High Performance Gravity Flow GRAIN & FERTILIZER BOXES

at Discount Prices

McCurdy Fertilizer Box features:

- Durable and dependable
- Heavy gauge steel construction
- Quality wheel operated door

SIZES IN STOCK

- 190 BIN
- 230 BIN
- 275 BIN
- 375 BIN

Options Available:

- 12", 15", 20" Sides
- Ladder
- Canvas Cover

GO WITH THE #1...

McCurdy the Old Reliable

- Before You Buy, Check With Us
- Most Sizes In Stock For Quick Service & Availability
- We Sell In Volume



Model 190



Model 230



Model 275



Model 375 Double Door Side Dump

Grain boxes help make your material handling chores easier with convenient transport and fast unloading of grain or other free-flowing materials.

Like to get a full 5-year warranty on your next running gear?

Then ask for Unverferth. That's right, our precisely built, road-ready, 8- and 10-ton wagon running gears come with a full, 5-year warranty and much more.

Unverferth-McCurdy's High Performance Wagons Turn Shorter!



- Wt. Capacity**
- 8 Ton
 - 10 Ton
 - 12 Ton
 - 12 Ton Tandem

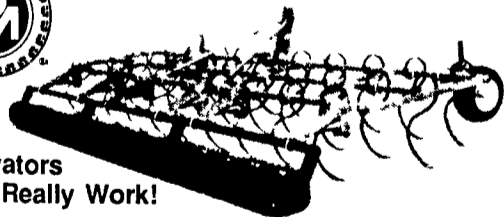
The Proven Complete Finish Tool — Our Neighboring Farmers Have Proven The Fact That They Really Work!

Get Secondary Tillage That's Effective & Affordable

Good For Alfalfa Seed Bed Preparation

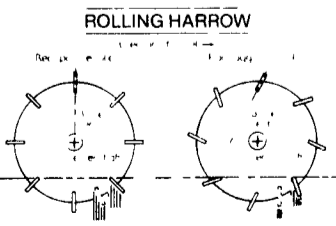
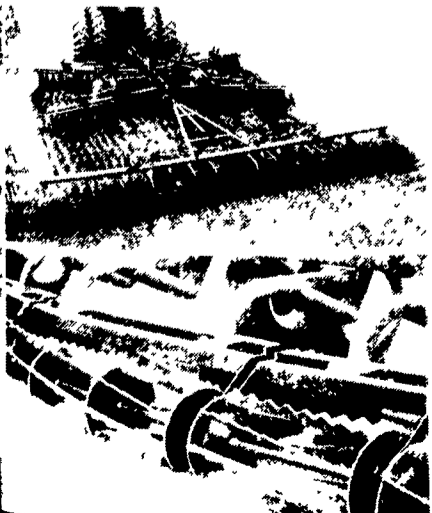


Field Cultivators They Really Work!



Unverferth's economical new S-tine cultivator teams rugged S-tines with an aggressive roller basket for thorough secondary tillage. And, with units starting at \$1900, the price is hard to beat.

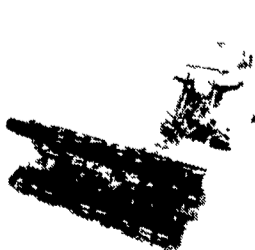
If You Are In The Market For A Cultipacker, You May Be Wrong! You Need To Stop In And Get The Story Why Specially Designed Double-Acting Tandem Rolling Harrow Will Do A "Better Job" With "Hard Lumpy" Ground Conditions. (They Do Work And Probably For Less Cost)



Leading roller of Rolling Harrow has pitched blades for aggressive action on the soil. Angle of blade promotes penetration of larger chunks and vigorous crumbling of earth. Trailing roller is passive with perpendicular blades to condition the soil.

Think About It - It Does Work!

In Stock: 13 1/2' Model RH13, ID No. 1446
List Price Over \$3,500
Cash & Carry, Haul Away Special Year-End Price **\$2,952**



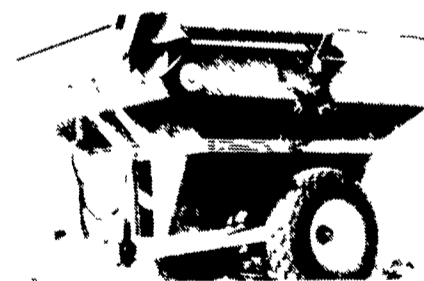
Flat folding wings are operated hydraulically from the tractor. They fold a full 180° into a compact unit for transport. (Units available from small non-fold to large wind models)

MAKE AN EXCELLENT YEAR-END INVESTMENT GET A SUPER DUTY GRAIN HAULER!

UNVERFERTH GRAIN CART
475 Bu. Cap
In Stock

List Price Over \$7,500

Towaway Special \$6,100



Compare these features:

• All Unverferth grain carts feature the following:

- Low profile design
- Slip Plate hopper coating
- Hydraulic auger lock
- Side-mounted, forward folding auger
- Axle torque bars
- Movable, 2 1/2" drop-leg jack with 7,000 lb capacity
- Complete coat of primer, inside and out
- Shear-pin equipped oscillating hitch
- Non-skid safety steps
- Heavy tube frame construction
- Continuous, 1/2" auger flighting
- Interchangeable, bolt on axles
- High speed unloading
- Continuously welded auger tube
- Weep hole in box members
- Twelve-inch auger with adjustable damper
- Center dump gate
- Spring-loaded bearing in auger to assure precise inside alignment
- Cast iron gearbox with precision ground gears
- Drive line slip clutch
- Rigid 1/2" steel mating plates at auger hinge point
- Hopper sight glass
- Inside steps
- Safety screen over auger pit
- Durable 3/8", high-pressure hydraulic tubing and hose to tractor

Every Unverferth grain cart is fully tested before it leaves the factory to ensure top-flight performance every time out

BINKLEY & HURST BROS. INC.

SALES PARTS SERVICE

133 Rothsville Station Rd., Lititz, PA 17543

Located 1/2 Mile North of Rothsville

(717) 626-4705

Hours: Mon-Fri 7 AM - 5 PM, Sat 7 AM - 11 30 AM, Sun Closed - Lord's Day

(After Closing) EMERGENCY PARTS: (717) 626-0885, (717) 933-4753, (717) 273-5673