

**35 TRUCKS & TRAILERS**

'65 Mack B61 tandem axle 673 engine, 10SP, air shift, mint condition. Ready to work. Perfect for equipment trailer. \$3950 OBO. Wright's, Springfield, PA. 215-626-2555

7,000 lb. forklift, runs good, \$950. OBO. 215-538-1945

700 lb. Allis Chalmers tow motor, good working condition, \$4,000. First Come First Serve. 717-354-7561

'86 Ford F250 3/4 ton pickup, 300 6 cyl., HD 4 spd., PS, PB, AM-FM, 36,000 miles, \$7,600. 717-733-2873

'86 Ford XL F250 Super Cab, 300 6 cylinder, 4 spd., PS, PB, cruise, tilt, AM-FM cassette stereo, dual tanks, 8,800 GVW, 31,000 miles, excellent condition, \$10,500. 717-733-2873

'87 Big Valley Livestock trailer, 16', 2-axle, excellent condition, \$2800. Farmersville Equipment, 717-354-2150

1949 Dodge stake-body truck, GVW 17,000, very good condition, low mileage. 717-749-3445.

1965 Chevrolet cattle truck w/15' Eby body, body in good shape, asking \$1500. Evenings, 201-689-2136.

4,000 lb. air tire forklift, runs good, \$2,900. OBO. 215-538-1945

(4) wheels for 11x24.5 tubeless tires \$200 for all; (12) 11x24.5 tires and wheels mounted, 9 radials and 3 bias from \$75-\$200. 717-859-3168.

1988 GMC 3500 Sierra SLE, extra cab camper special, 350 FI, 4 spd., PS, PB, air, AM-FM, 8,600 GVW, blue & silver, 4,000 miles w/balance of factory warranty, like new, \$14,900. 717-733-2873

335 Cummins engine complete with RTO 9513 trans, \$2,000. OBO.; 1970 GMC V-6, 14' dump, \$3,000. OBO 717-872-6594

Lancaster Farming, Saturday, November 26, 1988-B23

12 ton Lacross tag-along trailer, 16' deck, 3' beaver tail with ramp, air brakes, good condition. 717-362-3773.

'87 GMC 3500 dual whl. crew cab, 6.2 diesel, auto., PB, PS w/8' Omaha standard stake body dump, 10,000 GVW, 24,000 miles, \$12,900. 717-733-2873

'71 White 4000, 270 Cummins engine, Road Ranger trans. w/GRM Model Prentice loader w/Prentice rear mount frame, powered by PTO or AC del. power unit. Truck and loader in good condition. \$10,500 OBO. Wright's, Springfield, PA 215-626-2555.

73 Ford F-350 truck w/ Schramm 160CFM air compressor, both \$2500 Gardner Denver 85CFM trailer compressor, \$1200 Excellent condition. 215-459-8154.

'76 Ford LN700, 361 V8, 5-speed, 19,400 GVW, w/22' van box, good truck, \$2900. 717-374-1958.

'85 Chevy C30 1 ton pickup, 350 auto., PS, PB, 9,000 GVW, 45,000 miles, dark blue, \$7,600. 717-733-2873

'86 Chevy HD C20 pickup, 350 auto., PB, PS, air, AM-FM, cruise, 29,000 miles w/ fiberglass top, Class III hitch, 8,600 GVW, excellent condition, \$8,975. 717-733-2873

**NEED A GOOD USED CAR or TRUCK?**

COMPARE

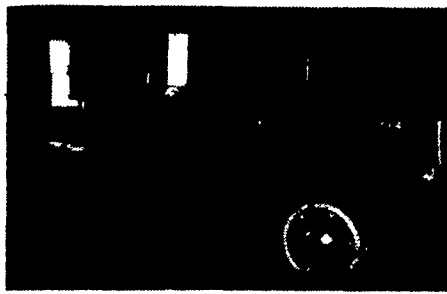
- 1 YEAR FREE WARRANTY
- 1 YEAR FREE STATE INSPECT.
- 1 YEAR FREE OIL CHANGES

UP TO 120 USED CARS & TRUCKS TO CHOOSE FROM

AS LITTLE AS NO MONEY DOWN

**L&B** DODGE CHRYSLER PLYMOUTH

NATIONAL AWARD WINNING DEALERSHIP  
"ASK A FRIEND ABOUT US"  
693-5855 or 1-800-992-6275  
RTE. 422, WEST OF WERNERSVILLE



**1948 MACK 505-S**  
O.H.V. Thermodyne Gas 35,000 Original Miles V.G.C. \$3,500 Or B-O  
**609-455-2368**  
After 6 P.M.

**GOOD USED TRUCKS & 4x4's**

- '82 Chevy 1/2 ton, 4x4, Scottsdale w/topper, 6.2 diesel, auto, air, only 34,000 miles, dark brown, very good condition ..... \$6,400
- '83 Ford Ranger XL, 4x4, V6 5 SP, 78,000 miles ..... \$4,295
- '86 Dodge D100, 6 cyl., auto. stereo, bedliner ..... \$6,895
- '86 Ford Bronco II, V6, auto., air, stereo, 40,000 miles ..... \$11,995
- '87 Ford F150, 6 cyl., 4 SP, cloth interior, dual tanks, 9,000 miles ..... \$9,495
- '87 Dodge 3/4 ton 4x4, V8, auto., air, stereo, 39,000 miles, Balance of factory warranty ..... \$9,495

**BIRCHWOOD AUTO SALES**  
Schaefferstown, PA  
717-949-6513



**S-Series 1700**  
**'84 International Truck**  
392 gas motor, with 48,000 miles, 18 ft. Leister Cattle body, excel. condition, inspected - call  
**301-829-1542**  
Roberts, Mt. Airy, Md.

**FISHER'S TRAILER SALES**

**CUSTOM FAB PONDEROSA MONARCH 4-STAR BISON**  
Reduced Prices On All 1988's  
Savings from \$100 to \$300

- SPECIAL - 16 ft. Gooseneck 7 ft wide, slant load, dressing room, rear tack, lined, pads, mats, '89 blue ..... \$6000
- 16 ft. Gooseneck 7 ft. wide, 7 ft. high, 5200# axles 6 hole wheel, 1 slat sides, '88 brn Monarch ..... \$4300
- 17 ft. Bumper 7 ft. high, center gate, tack space, front divider, 4 wheel brakes, '88 gray ..... \$3100
- USED - \$550 and up
- IN STOCK-Horse, Stock, Bumper, Gooseneck, Utility
- (717) 242-0941
- RD #2 McVeytown, Pa. 17051
- Rt 22 5 mi west of Lewistown, Pa.

Mark VII - Pickups - Broncos - Bronco II - Stake Body - Crew Cab -

**SHEEHY FORD LINCOLN MERCURY INC.**

For All Your Farming Transportation Needs Through The F800 Series

BRONCOS DIESEL PICKUPS CHASSIS CAB CARGO VANS 4x4 RANGERS PICKUPS  
BRONCO II SUPER CAB CREW CAB STAKE BODY BOX VANS XLT CUSTOM VANS

**SHEEHY HOTLINE 717-272-7671**

Unless This Emblem Is On Your Car Or Truck You Probably Paid Too Much

9-9 Daily  
9-5 Sat.  
717-272-7671

**SHEEHY LEBANON**

Parts Dept. Open  
Daily 8-5  
Sat. 8-12  
717-273-8168

20th & Cumberland St. - Lebanon

**Ranger Rebates Increased From \$500 To \$800**  
17 Left In Stock To Choose From

**\$600-\$800 Rebates Bronco II**

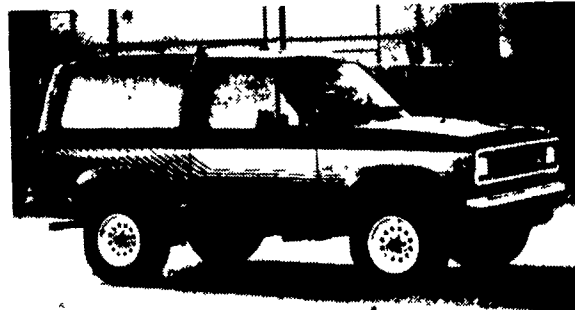
**Brand New Super Duty and Crew Cabs In Stock**



1988-Ford Crew Cab



1988 Ranger



1988 Ford Bronco II



4 WD Pickups In Stock

Tempo - Cougar - Continental - Town Car - 4x4 - Box Van - Rangers -

Custom Vans

XLT

Grand Marquis

Marquis

Lynx

Topaz

Diesel Pickups

Mustang

T Bird