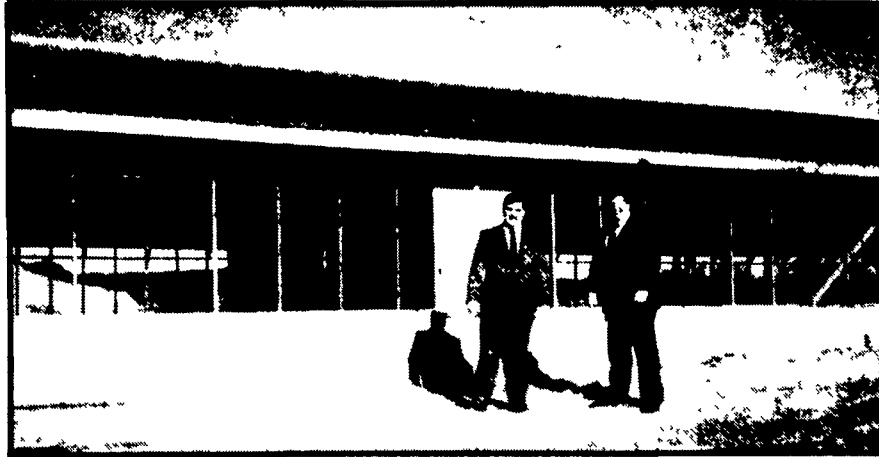


Stop by!

OPEN HOUSE

at the
GIPE'S FINISHING BARN
at the
DAVID S. EVANS FARM
East Prospect, PA

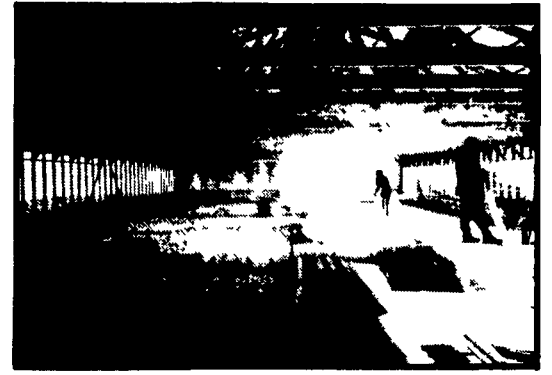
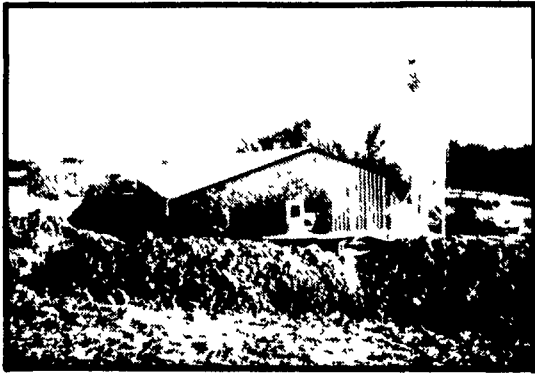


WEDNESDAY, DECEMBER 1

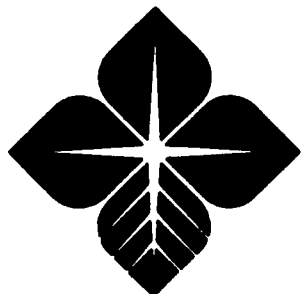
11 A.M. - 2 P.M.

Lunch Provided

- * 1,000 Head Capacity
- * Slanted Floor Design
- * Scraper Manure Removal
- * Lagoon Storage
- * Curtain Sides



Directions: From Route 30 bypass, take Wrightsville exit, Proceed S to Rt. 462, continue across 462 unto Cool Creek Rd. to Water Street approx. 4 miles. Watch for signs. Bldg. on left.



SPONSORED BY: **York**
Farm Credit Service
3301 West Market Street
P.O. Box 2427
York, Pennsylvania 17405-2427
Telephone: (717) 792-2641