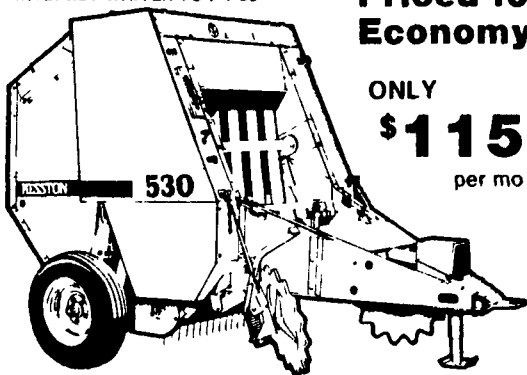


HESSTON THE PRIME LINE

5% Low-Rate Financing
 OR
 INTEREST WAIVER TO 7-1-89

Designed for Performance

Priced for Economy



ONLY **\$115¹⁷** per mo*

The Hesston Model 530 Round Baler is a baler convenient-sized to be used with a 30 PTO horsepower tractor. This baler provides high-density bales 39"x54" weighing up to 550 lbs. and baling up to seven tons per hour depending on crop and moisture conditions.

List Price	D.W. Ogg Price
\$7,670.00	\$6,951.00

*Monthly payment based on purchase price of \$6951 \$1950 down payment with 48 monthly payments of \$115.17 Total deferred purchase price of \$7478.16

Interest waiver subject to different repayment plan.

D.W. OGG EQUIPMENT CO.

TWO LOCATIONS

5149 Cap Stine Road
 Frederick, MD
 (301) 473-4250
 (301) 293-2033

(Bob's Welding)
 Taylorville, MD
 (301) 829-2042
 (301) 875-0363

Open 6 Full Days Every Week



Simplicity



JD 2150
 1200 Hrs., exc. cond.
\$10,000
 301-833-9091

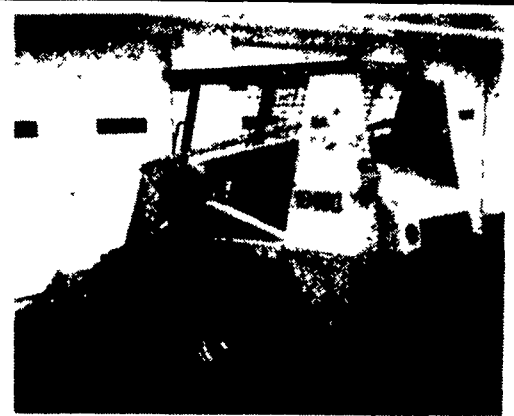
WALTEMYER'S SALES & SERVICE, INC.

John Deere Sales & Service
 Route 24, 2 miles South of Red Lion
 717-244-4168 or 717-246-3662

- JD 4520 tractor, new tires
- JD 8300, 21x7 Single Disk Grain Drill
- (2) JD 1209 mower conditioner
- Farmall 706 Gas Tricycle 3 PTH
- MF 43, 4R Corn Head
- 1R Snapper head for 3940 JD forage harvester
- 2 row Champion potato harvester w/ motor
- JD 125 skid loader
- Woods C80 pull type rotary mower
- JD 896 parallel bar rake
- JD 125 chuck wagon on 1065 running gear
- JD 4 RW Row Crop Cultivator

Used Lawn Tractors

- 214 w/38" Deck w/Bagger
- 314 w/46" Deck Hydrostatic & Rebuilt Engine
- 180 w/46" Deck, Gear Drive
- Snapper w/Mower & Blower



Case 1845C Uni-Loader
 Like New, Pallet Forks
 Included \$18,500.00
 Call 717-354-7835

Larry L. Adair



Quality Lubricants Since 1976

(717) 755-8638

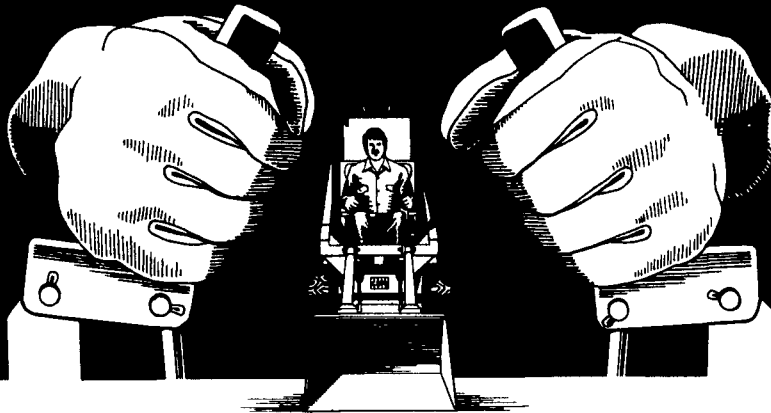
55 Gal. Drums Motor Oil

Low Delivery Charge For Over 50 Miles
 \$10 Drum Deposit Or Exchange On Some Brands

Call or See me at New Holland Sales Stables, Inc.
 Every Monday morning from 9 a.m. to 2 p.m.



MOVE MOUNTAINS WITHOUT MOVING A FOOT.



Case Uni-Loader* skid steers not only out dig out lift out carry and out load most others they also take a big load off your feet That's because speed, direction and all loader functions are controlled by two hand levers. You can maneuver easier and work faster There are other advantages too self-leveling loaders simple external chain-tension adjustment separate hydraulic and chain/sprocket oil systems reduce maintenance and down time Let your hands do the working with a Case Uni-Loader skid steer the easy

way to get a handle on tough chores

Choose From These Models...

- 1818
- 1835C
- 1825
- 1845C

See us today for Uni-Loader* skid steers with convenient one-stop service and flexible financing programs

See us for Uni-Loader skid steers

Special Prices On All Models Case-IH Skid Steer Loaders

Extra Special Price On 1835C Gas Models Only!

ZIMMERMAN'S FARM SERVICE

1/2 Mile West Off Rt. 501 On School Rd., Bethel, Pa.

717-933-4114



NEW! BOLTS IN STOCK NEW!
 By The Pound

USED EQUIPMENT

TRACTORS

- Long 42 Hp. w/Loader
- Case 995 w/Cab
- Case 430
- Case 1030
- Case DC Tractor
- Case 2470 Tractor
- Case 2090 Tractor
- Case 2390 Tractor
- 1390 Case Tractor
- White 2-105 Tractor
- David Brown 990 w/Loader
- Oliver 1755
- IH 3388
- IH 3783

LOADERS

- Case 1830
- Case 1845 Diesel
- Case 580 Loader Backhoe
- Case 1830 Uni-Loader
- Owatanna Skid Loader—\$1,500
- NH 445 Skid Loader

HARVESTING EQUIPMENT

- Hesston 2000-150 Harvester
- NI Unisystem, 702 Diesel, 710 Combine & 760 Harvester
- NI 705 Uni-Tractor
- NI 768 3-Row Head
- NI 709 Uni-System
- NI 315 Sheller
- NI 737 Husking Bed
- NI 838 Husking Bed
- NI 767 Super Chopper
- NI 323 1-Row Corn-picker
- NI 325 12 Row Husking Bed
- Gehl 800 Harvester
- Int. 234 Picker
- NH 774 4-Row Cornhead

HAY EQUIPMENT

- IH 1190 Windrower
- NH 469 Windrower
- NH 479 Windrower
- NH 488 Windrower
- NH 499 Haybine
- Hesston PT 10
- Hesston 1010 Windrower
- Hesston 1090 Windrower
- Hesston 1091 Windrower
- Case 650 Windrower
- NI Rake
- NI 456 Round Baler
- NI 484 Round Baler
- IH 27 Baler
- IH 445 Square Baler
- NI 565 Square Baler
- 7 Hay Wagons
- Ford 618 Blower
- Hesston 620 12' Head

TILLAGE

- Rhino 7-Tooth Soil-Saver
- IH 6-16 Auto Reset Plow
- IH 10 Ft. Disc
- Int. 2-Bot. Trailer Plow
- JD 18 Ft. Field Cult.
- 7-Tooth Soil Saver
- Case 16" Reset Plow, 6 Bottom
- Case Disc Harrow, 10'
- Case 13' Disk, F21
- JD 210 Disk
- Kawane 10 Ft. Disk
- Oliver 22' Disk
- Oliver Disk
- Used Cultipacker
- Vicon Rotary Harrow

MISCELLANEOUS

- NH 40 Ft. Elevator
- King Wise 32' Elevator
- NH 36 ft. Elevator
- Gehl 99 Blower
- IH 56 Blower
- Automatic Roller Mill
- IH No. 10 13-Disc Drill
- JD 7000 4-Row Planter
- 4-Row Cole Corn Planter
- 6 Used Spreaders
- Scavenger 1263 Manure Spreader
- Scavenger 1678 Manure Spreader
- NI 224 Spreader
- Gehl 350 Spreader
- Martin 1575 Spreader
- 500 Gal. Century Sprayer
- Weaverline Cart, 30 Bushel
- IH 510 16x7 Grain Drill
- Ontario Drill
- Van Dale TMR Mixer



NEW SPECIAL NEW IDEA 404 WHEEL RAKE \$1,250



ZIMMERMAN'S FARM SERVICE

1/2 Mile West Off Rt. 501 On School Road, Bethel, PA
 Phone 717-933-4114

For Sale:
 New pins and bushings, rollers, sprockets, chains, idlers for all makes of crawlers. Call evenings and ask for Tom.
201-850-1565

Cat 951-C Crawler Loader \$23,000
 Dennis M. Miller Construction Equipment Sales
 1-800-252-0-CAT Days
 717-838-1888 Eves

FARM REDUCTION SALE
 Deutz DX 370 (Deutz-Allis 6265) Tractor 4 WD with ROPS and canopy, 18.4-30 Rears, 12.4-24 front, low hours, Deutz-Allis 465 quick-tach loader - both in new condition, buy together or separate; Int. 2444 tractor with HD loader & bucket; 8 ft. JD RW transport disc, good blades; JD offset transport disc, new blades; 5 ft. Brillion pull type rotary mower; 7 ft. MF 3 pt. sickle bar mower; 3-bottom 14 inch mold-board plow 3 pt.; 4 star MM tractor, 3 pt. live PTO, power steering, 8 ft. Brillion cultipacker; NI hay loader (kept inside) collector's item; H.D. Hydro scoop 3 pt. both ways.
717-334-8804 after 6 p.m.