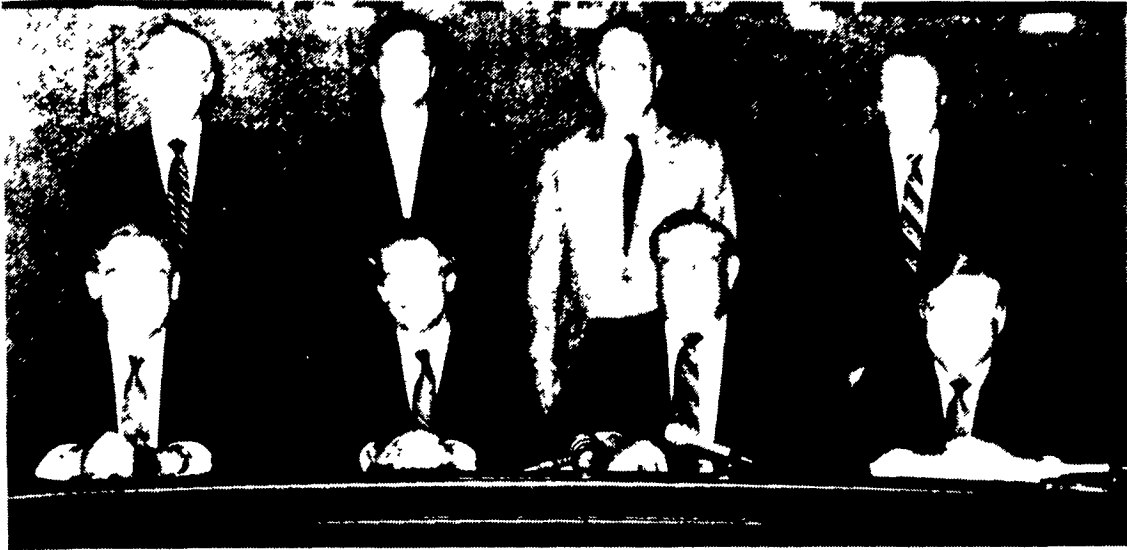


Senate Republican Caucus Elects Leaders



The state Senate Republican Caucus has elected members to its leadership positions for the 1989-90 legislative session. They are, from left, bottom row: Senator Noah W. Wenger (Lancaster and Chester counties), Majority Caucus Chairman; Senator Robert C. Jubelirer (Blair County), President Pro Tempore; Senator F. Joseph Loeper (Delaware County), Majority Leader; Senator Roy W. Wilt (Mercer County), Majority Caucus Secretary.

Top row: Ralph W. Hess (York County), Majority Caucus Administrator; Senator David J. Brightbill (Lebanon County), Majority Whip; Richard A. Tilghman (Montgomery County), Senate Appropriations Committee Chairman; and D. Michael Fisher (Allegheny County), Majority Caucus Policy Chairman.

Rohrer Shows Chester

County Champion Steer

WEST CHESTER (Chester) — Tiffany Rohrer, daughter of Bob and Joan Rohrer of Nottingham, exhibited the grand champion steer at the Chester County 4-H Beef Show earlier this month. Her purebred Angus steer, weighing 1,295 pounds, also was named reserve champion steer at the District show in New Holland on the following day.

Tiffany went on to be named the champion senior showman at both county and district shows. Her champion was purchased by Weaver Martin Trucking Service for \$1.90 per pound.

The reserve grand champion, shown by Jonathan Howe of Downingtown, was purchased for \$1 per pound by Downingtown National Bank. The bank then donated the steer to Tel Hai Rest Home to be used in their meals. Other buyers included Stoltzfus Meats of Inter-course and Willie the Butcher of Litz.

The champion trophy presented to Tiffany was sponsored by Mr. and Mrs. J.K. Robinson, owners of Crebely Farms, where the county show was held. The sponsors of the reserve grand champion trophy and the ribbons was Southeast Farm Credit Service in Avondale.

A partial listing of the placings follows.

- Lightweight**
1 Vance Dietz, 2 Matt McAllister
- Mediumweight**
1. Lane Lineberger, 2. Phil Scoggins, 3 David Howe
- Light Heavyweight**
1. Tiffany Rohrer, 2 Jonathan Howe, 3 Ryan Rohrer
- Heavyweight**
1 Charles Bancroft, 2. Doug Thames
- Senior Showmanship**
1. Tiffany Rohrer, 2. Lane Lineberger, 3 Vance Dietz
- Junior Showmanship**
1. Matt Howe, 2. Jonathan Howe, 3. Matt McAllister
- Beginner's Showmanship**
1 Charles Bancroft, 2 Todd Jackson, 3 Doug Thames



Unless you want to be a fiddler on the roof, make your next one a Fabral.



When you specify and install Fabral® roofing panels for your buildings, you can avoid getting into another business—roof maintenance.

That's because Fabral panels are made of full hard 80,000 P.S.I. strength steel and are available in 36" widths. We've engineered these panels with wide flat surfaces for extra rain carrying capability and our anti-syphon side lap design makes them virtually leak proof.

Galvanized coatings on both sides give you the added edge in corrosion resistance and weather protection. Finally, each panels is specially treated with a patented finish coating to resist fading, cracking and peeling in a wide range of great looking colors.

To learn more about Fabral roofing and siding panels, give us a call. We can give you a great looking over head—and reduce your overhead at the same time!



Corrosion Resistant Materials Company

P.O. Box 848
Farmingdale, New Jersey 07727
Toll Free 1-800-322-CRMC
For Fast Service Phone: (201) 938-5500

ATTENTION FARMERS

Dead Animals Removed
Cattle Removed Free Of Charge
We Also Buy Hides & Grease

Call 717-464-2631
If No Answer Call 717-436-8272
E.C. CLECK & SON, INC.
RD 1, Mifflintown, PA 17059

CONTACT US

For
**SUPER GROUND DRIVE
TANK - SPREADERS
PIT - ELEVATORS**

COMPACT ROTO BEATERS

**WISCONSIN & ALLIS
CHALMER POWER UNITS**

**HAND-O-MATIC BUNK
FEEDERS**

**COMBINATION MOWER
AND CRIMPER UNITS**

455 AND 456 MOWERS

NEW IDEA CRUSHERS

**NOW AVAILABLE
Crimping Rolls To Fit
Your New Idea Crusher
Speeds drying time approx. 1/2 day.**

**NEW SUPER 1800 GALLON
PTO WITH HYD. GATE TANK
SPREADER A SUPER
BARGAIN ONLY \$2500.00**

**200 HP VM AIR COOLED DIESEL,
COMPLETELY REBUILT
\$4,500.00**

SMUCKER
WELDING & MANUFACTURING
2110 Rockvale Road
Lanc., PA 17602