

# Perry Co. DHIA

## dhia Monthly Report

Pennsylvania Dairy Herd Improvement Association

September 1988

Name	Brd.	No. Cows	% Days In Milk	Milk Lbs.	Fat Lbs.
Ray E McMillen	3	98.8	86.7	21,136	796
Richard Metz Jr	3	29.3	87.6	21,879	791
Kenneth R Benner	3	64.6	87.3	20,951	776
Edward C Brofee	B3	124.7	86.3	21,163	769
Alrada Farms	B3	98.3	85.8	19,560	734
Ed & Wilma McMillen	3	42.8	86.9	20,462	724
Donald Dum	3	37.8	89.1	19,238	721
Dean & Eric McMillen	B3	65.6	84.4	19,372	702
Perry Kretzing+Sons	B3	115.6	88.5	18,925	700
Robert + Linda Loy	B3	55.4	85.9	18,845	698

Martin Brothers	3	168.8	88.4	18,183	694
Ronald W Shambaugh	B3	33.0	86.7	18,764	689
O'Toole Bro's	B3	50.0	86.9	18,454	687
Nevin G Rice	B3	102.5	88.0	18,923	686
Richard L Maurer	3	55.0	88.1	18,412	685
David H Weller	B3	61.0	87.3	18,924	685
Benjamin E Dum	3	47.6	88.8	18,881	682
Clark W Bower	B3	91.1	87.2	17,234	677
Edwin L Sheibley	B3	57.6	86.2	18,323	676
Innerst Farm	B3	54.8	84.1	19,191	674
Richard G Smith	3	61.0	87.6	18,280	672
Milmay Farm	3	54.9	86.7	18,484	670
Byersholm Farms	B3	22.5	94.5	19,215	668
Arthur E Dum Jr	G3	59.5	91.2	18,324	663
George Brubaker Jr	B3	47.0	88.2	17,116	663
Perry Valley Farm	G3	55.5	87.0	18,122	658
Pine Creek Farm	B3	48.6	84.7	19,365	656
Carl R Martin	B3	60.1	85.8	18,444	653
John B Sauder Jr	B3	87.3	88.0	17,478	649
Melvin S Weaver	B3	73.5	85.6	18,544	647
Bratton View Farms	3	72.6	90.0	18,178	641
M W Smith Farms	B3	79.6	83.8	19,601	638
Carl E McMillen	3	49.9	90.2	18,441	636
John-Timothy Adair	G3	49.1	81.2	16,771	633
JW & CL Achenbach	3	46.3	90.4	17,516	632
Danny E Rice	3	33.9	86.8	16,726	631
R Jack Crozier	B3	44.4	88.3	17,597	629
Richard Kriebel	3	49.4	88.8	17,525	627
John E Book	B3	44.7	86.7	17,609	621

Lyons Brothers	B3	65.9	91.2	16,816	620
Robt & Bernice Gabel	3	41.9	91.1	18,011	619
Oscar & Winie Campbell	B3	53.6	87.8	17,502	619
Daniel F Stoltzfoos	B3	40.4	87.1	17,399	615
Philip E Brubaker	B3	64.3	80.7	17,196	612
Duane L Hertzler	B3	153.6	84.9	16,340	611
Clarence S Martin	B3	52.5	85.3	17,081	609
Irvin M Martin	B3	55.0	86.5	17,361	605

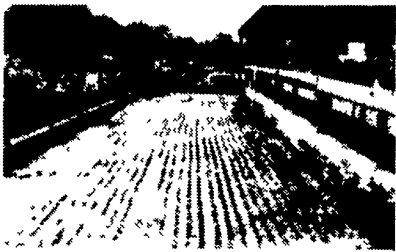
Alrada Farms Lilly	5-5	305	19,523	4.3	843
58	6-0	305	22,142	3.7	839
Bell 82	5-3	305	22,484	4.5	1018
Creek	5-1	305	23,225	3.6	848
Danny	5-0	305	21,660	4.3	938
Milmay Farm Marge	5-2	288	23,827	3.6	861
Martin Brothers 741	4-8	305	22,861	3.8	889
862	3-1	305	26,460	3.4	908
867	3-1	302	19,942	4.1	825
Donald Dum Bev	4-0	305	21,282	4.1	886
Robert & Linda Loy Claudet	4-5	305	21,222	3.8	818
Delite	3-5	305	25,615	3.7	964
Richard L Maurer Peach	4-5	305	22,106	3.6	813

(Turn to Page D15)

### SLICK CONCRETE CAN BE ROUGHENED

SCABBLING is an effective way to avoid unnecessary losses of cattle. The SCABBLER makes bands about two inches wide approximately 1/8" to 3/16 in. depth. This gives sufficient area for good footing while allowing you to scrape the smooth surface as before. It is near enough to the surface to give your cows full advantage of the roughness and deep enough to remain effective for years. It greatly aids in heat detection.

And the good news is that it is reasonably priced. You have the choice of doing it yourself or having us do it for you. We offer service right to your door. Call us for more details.



**SUBURBAN RENTALS, INC.**  
Call 800-692-0123  
We go almost anywhere

## SUPER BOWL ENERGY FREE WATERER



U.S. and Canadian Patent Pending

- Zero Operating Cost
- Less Maintenance
- Unique Trap Door Closure
- No Stray Voltage
- No Algae Growth
- Cool, Fresh Water All Year

**US AGRI-SYSTEMS**

SPECIALIZED FARM EQUIPMENT

OXFORD, PA 19363

(800) 222-2948 (301) 398-2948

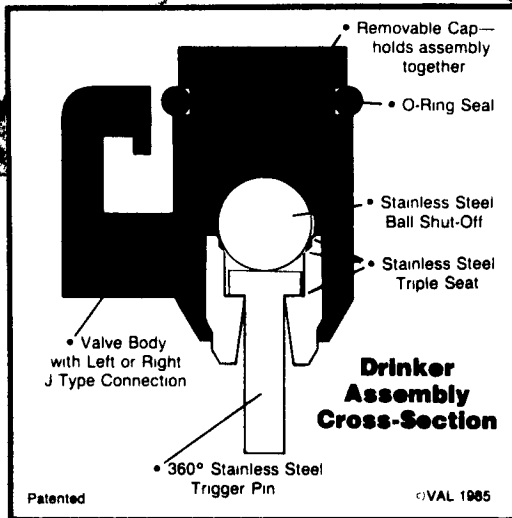
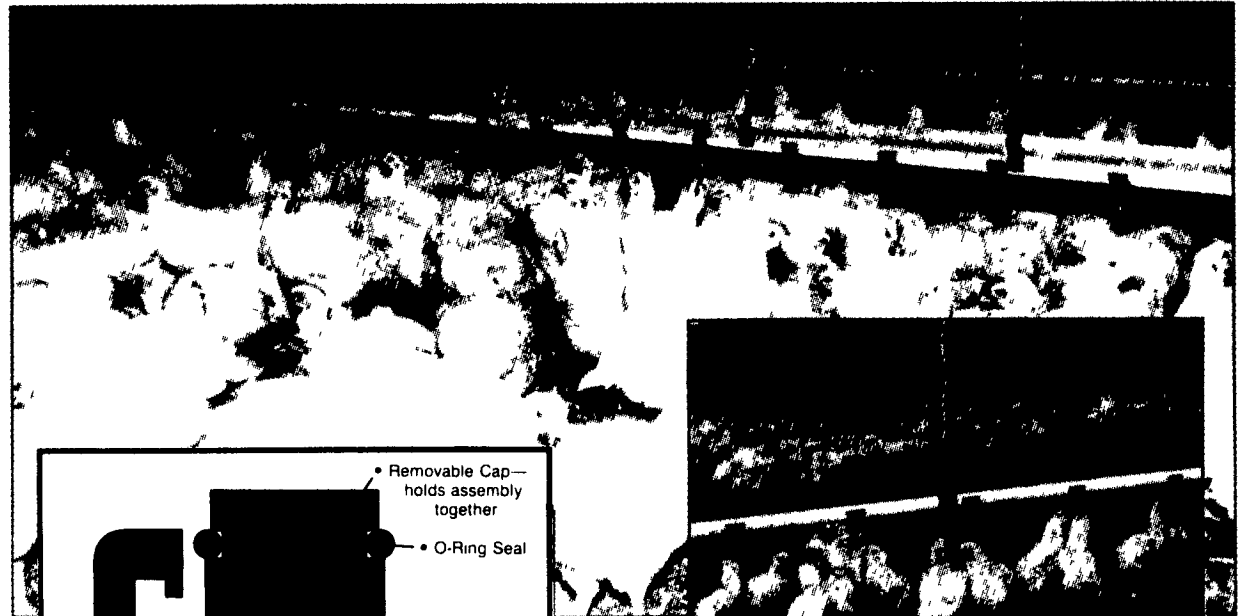
MANURE MANAGEMENT SPECIALISTS

## ARE YOU LOOKING TO UPDATE YOUR WATERING SYSTEM?



# Big Dutchman®

POULTRY FLOOR WATERING SYSTEM FOR BROILERS, BREEDERS, TURKEYS OR DUCKS



### NIPPLE DRINKER FEATURES

- Day-old birds can activate the valve from any side, any angle. (Mini drinkers required only if birds have been debeaked day-old.)
- Triple stainless steel valve seat made to precision specifications. No rubber seats to replace. Drinker operates on low 1/4 lb. pressure. Minimizes wet litter problems.
- Each nipple can serve 15 broilers, 10 heavy breeders or 8 turkeys
- Drinker mounts on water line saddle by means of a "J" flange. Easy assembly and easy replacement.
- Drinker is easy to take apart & re-assemble. All parts are accessible and removable by simply pulling the cap out of the body.
- New Mini-Trough Drinker available for day old debeaked birds. Attaches to Nipple Floor Watering System, and remains through grow-out period. There is no need to remove the mini-trough between flocks

### SYSTEM FEATURES

- Water is always accessible, and always clean. The system is completely enclosed. Nipples are self cleaning, and they do not collect dirt. Since the nipple "washes" every time it is triggered, it does not get clogged by feed or feather dust.
- Drier litter is maintained because of the reliable triple seal and low water pressure. There is less spillage and no squirting with this low pressure (1/4 lb. or less) watering system
- The pressure regulator (30VVR332) can provide and maintain a uniform 1/4 lb. pressure for the entire length of a 500 ft. 3/4 inch plastic water pipe.
- Inspection and maintenance are easy. If a nipple needs replacement, simply turn to disengage the "J" flange and pull the unit out of the "saddle" or pipe connector. The new nipple may be inserted and locked in place by turning to engage the "J" flange. There are no threaded parts, clips or screws.
- Other maintenance tasks are as easy. Leveling may be done by means of adjustment straps on the winch cables. There are no cups, troughs or founts to clean
- Simple installation for floor systems. Plastic water pipe is clamped to 1" conduit sections, coupled together for continuous support. Conduit is suspended from winch system at 12' (max) intervals. The 3/4" plastic water pipe clamps to conduit every 24".

Mfg. by VAL



**HERSHEY EQUIPMENT COMPANY, INC.**

Designers of Quality Systems for Poultry, Swine and Grain Handling

SYCAMORE IND. PARK  
255 PLANE TREE  
DRIVE  
LANCASTER, PA 17603  
(717) 393-5807

Route 30 West  
at the  
Centerville Exit.