

WENGBERS INC.

HOURS:
MON-FRI 7:30 To 5:00
SAT 7:30 To NOON

251 SOUTH RACE STREET, MYERSTOWN, PA. 17067

TELEX 316290

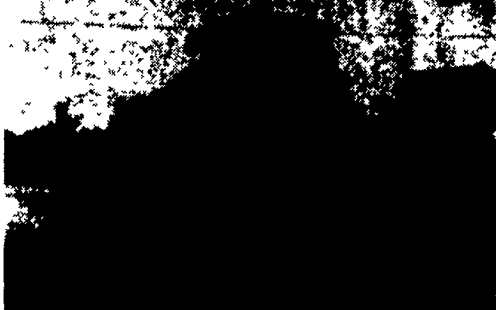
PHONE: 717-866-2135

NIGHTS
PHONE
717-866-7147
or
717-273-9089

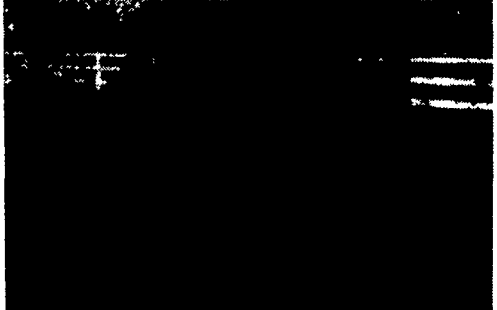
*** FINANCING AND LEASING AVAILABLE TO QUALIFIED CUSTOMERS**



1980 Case 1835 Skid Steer— \$8,900
1983 Case 1835B Skid Steer— \$9,900



1980 Case 730 Rubber Tired Loader
\$22,500



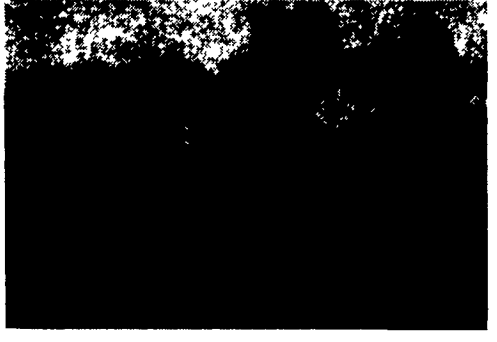
1979 Case 1845 Skid Steer— \$9,900
1980 Case 1845 Skid Steer— \$9,900



1981 Case 1150C w/Ripper- 6 Way- Low Hours
\$34,500



1975 Case 584 21' Forklift
\$13,500



1973 Case 580B Tractor Loader Backhoe-Extendahoe
\$11,500



1978 Case 1150B Crawler Loader
\$25,000

CONSTRUCTION EQUIPMENT



NEW 1988 TRAILERS ON SPECIAL
• 2 Axle, 5 Ton, 14 Ft. \$1,695
• 2 Axle 5 Ton, 16 Ft. \$1,795

(7) TRUCKS

- | | |
|-------------------------------------|---------------------------------------|
| 1953 Chevy Pickup.....\$2400 | 1980 Chevy C30.....\$5900 |
| 1977 IH 1750 Diesel Dump.....\$3900 | 1985 Ford E350 Mini Bus.....\$16,500 |
| 1969 Mack Dump..\$4900 | 1981 GMC Tandem Rollback.....\$29,500 |
| 1979 Chevy C60 Flat Dump.....\$4900 | |

(15) TRAILERS

- | |
|--------------------------------------|
| 1X Tag-A-Long.....\$1250 |
| 1988 2 Axle 5 Ton..... \$1695-\$1795 |
| (2) 2X Tag-A-Long.....\$2000 |
| 3X Tag-A-Long.....\$2900 |
| 1988 9 Ton Gooseneck.....\$4900 |
| 25 Ton Lowboy.....\$6900 |
| 1988 10 Ton Tag-A-Long.....\$6200 |
| 25 Ton Lowboy.....\$6900 |

MISC. CONSTRUCTION

- | | |
|--|--------------------------------------|
| (100+) Used Hoe Buckets.. Come Look | Case 450 Hoe Attach.....\$3500 |
| (75) Loader Buckets.. Come Look | 8' Sheeps-foot.....\$3900 |
| (75) Set Forklift Forks..... Come Look | Huber Maintainer..\$3900 |
| Ford 4500 ROPS.....\$650 | Pull Type Sweeper\$3900 |
| Ripper For Cat 933.....\$1500 | Long 1199A Hoe Attach.....\$3900 |
| (4) Tree Planters.. \$695-\$1800 | JD 3 Pt. Hoe.....\$4450 |
| (4) Winch Attach... \$1000-\$3750 | AC D Grader.....\$5900 |
| 1 Ton Roller.....\$2500 | (2) Wood Chipper..\$5900 |
| (3) JD Hoe Attach... \$2500-\$4500 | Huber M600 Maintainer.....\$7900 |
| Tree Shearer.....\$2900 | Wayne Stump Grinder.....\$8900 |
| MF Hoe Attach.....\$3000 | Petibone 5 Ton Yard Crane.....\$8900 |
| | JD 760 Scraper..\$18,500 |

(12) TRACTORS WITH LOADERS

- | | |
|---------------------------|----------------------|
| MF 303.....\$3900 | MF 40.....\$6500 |
| (2) MF 202.....\$4500 | IH 2500A.....\$6500 |
| White 2-63.....\$4900 | Ford 3400.....\$6500 |
| White 2-44.....\$5500 | Ford 2110.....\$6900 |
| IH 240A-Diesel.....\$6500 | Ford 335.....\$8900 |
| | IH 260A.....\$10,500 |

(27) DOZERS

- | |
|------------------------------------|
| McCormick T20.....\$2000 |
| Cat D2.....\$2500 |
| Oliver HG.....\$3000 |
| JD 440.....\$3500 |
| Case 310.....\$3500 |
| Cat D4D.....\$4500 |
| Case 450.....\$5900 |
| IH TD9-92.....\$6900 |
| (5) JD 350..... \$5500-\$12,500 |
| Komatsu D30 Cab.....\$12,500 |
| (4) Cat D4D . \$14,500-\$18,500 |
| JD 550.....\$19,500 |
| Cat D3.....\$21,500 |
| Case 850B-6 Way.....\$22,500 |
| (3) JD 450 .. \$12,500-\$22,500 |
| Cat D6C.....\$23,500 |
| Case 1150C-Cab-Ripper.....\$34,500 |
| IH TD 25C w/Ripper.....\$55,000 |

(28) BACKHOES

- | |
|--------------------------------|
| Ford 800.....\$3500 |
| (2) Case 530.. Ea. \$4500 |
| Ford 4500.....\$6500 |
| JD 500C.....\$6900 |
| IH 3444.....\$7900 |
| JD 300.....\$7900 |
| (3) Case 580B.....\$7900 |
| JD 310.....\$7900 |
| MF 2200.....\$8900 |
| MF 40.....\$8900 |
| Ford 4500.....\$10,500 |
| (2) Case 580B.....\$11,500 |
| Ford 420.....\$12,500 |
| (3) AC 715.....\$12,500 & Up |
| Ford 550.....\$12,900 |
| IH 260.....\$13,500 |
| Case 480C.....\$13,500 |
| Case 580C.....\$14,500 |
| (2) JD 410's.....\$15,500 |
| Long 5 In 1.....\$15,500 |
| JD 690B Excavator.....\$35,000 |

(17) RUBBER TIRED LOADERS

- | |
|---------------------------|
| Case W7.....\$4900 |
| Michigan Cab.....\$5900 |
| Trojan-Cab.....\$6900 |
| IH 500.....\$6900 |
| Hough 50C-Cab.....\$7900 |
| Ford A62.....\$8500 |
| Waldon w/Hoe.....\$10,500 |
| Ford A64.....\$16,500 |
| JD 544.....\$19,500 |
| (2) Ford A62.....\$22,500 |
| Case 730.....\$22,500 |
| Cat 910.....\$23,500 |
| JD 544 A.....\$24,500 |
| JD 544B.....\$24,500 |
| JD 644B.....\$34,500 |
| Cat 988.....\$49,000 |

(16) FORKLIFTS

- | |
|----------------------------|
| Yale 2000 Lb.....\$2900 |
| IH 2400.....\$4400 |
| AC 5000 Lb.....\$4500 |
| White 4000 lb.....\$4900 |
| (2) AC 4000 lb.....\$6900 |
| Baker 4000 Lb.....\$7900 |
| Komatsu 5000 Lb.....\$7900 |
| Yale 5000 Lb.....\$7900 |
| Ford 28'-RT.....\$7900 |
| IH 5421-21'.....\$7900 |
| MF 2500D-14'.....\$8900 |
| Case 580D-21'.....\$8900 |
| Skytrack.....\$9900 |
| AC 1600-21'.....\$12,900 |
| Case 584D-21'.....\$13,500 |

HUNDREDS OF CRAWLERS & BACKHOES FOR SALVAGE

EXCELLENT SELECTION OF AFFORDABLE USED EQUIPMENT