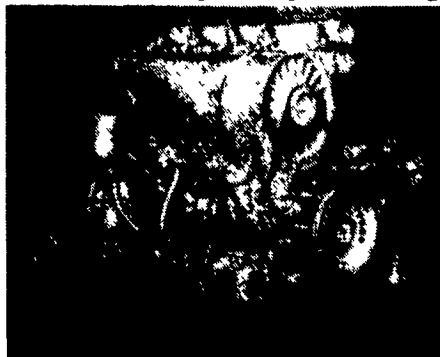


**Is that old diesel about to die?**  
**Are maintenance costs eating profits?**  
 Now is the time to do something about it!  
 Let us show you the benefits of owning a

**DEUTZ  
DIESEL**



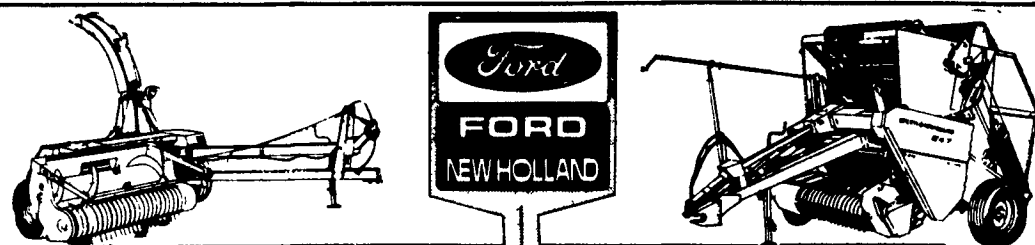
**Call or Stop In - lets talk  
about your diesel power needs**

- (1) 3 Cyl. Deutz F3L912
- (1) PJ-2 Petter w/Hand Clutch - Rebuilt
- (1) SU 1056T VM w/Clutch

**Your Authorized Deutz Dealer  
INDUSTRIAL ENGINE SALES & SERVICE**

James E. Horst

52 Queen Rd. Shop (717) 768-3378  
 Gordonville, PA 17529 Res. (717) 687-6874



**NEW EQUIPMENT SPECIALS**

- NH 514 Manure Spreader, 1100x20 Tires ..... \$ 3,350
- NH 790 Harvester with Metal Detector (Demo) ..... \$10,250
- Cash Discount \$450; balance \$ 9,800
- NH 499 Haybine ..... \$15,400
- Cash Price \$14,000

*Many more items in stock  
Check our inventory & price before you buy.*

Free Financing on Hay & Forage Equipment until 6/1/89

- Low Finance Rates
- 0% - 12 Months
  - 5.9% - 24 Months
  - 7.9% - 36 Months

or  
Check with us for Big Cash Rebate Amounts

**DEPENDABLE MOTOR CO.**

**East Main St., Honey Brook, Pa.  
215/273-3131 or 215/273-3737**

**Dependable Is More Than Our Name**

**14 NEW MF 13', 15', 16' and 18' FLOATING GRAIN TABLES  
IN STOCK TO FIT MF QUICK ATTACH COMBINES**

We also have in stock Hydro reel drives for older combines,  
not equipped for hydraulic reel at additional cost of \$1,000.

**Financing Available Thru Agri Credit Corp.  
35 Used Combines To Choose From**

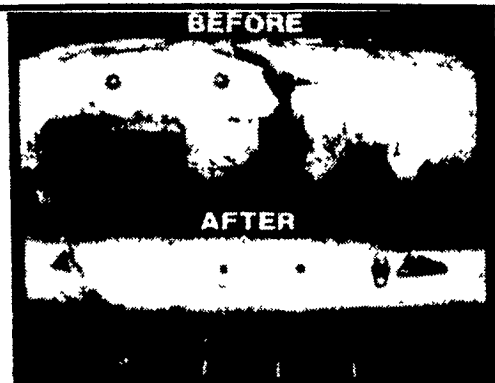
|   |          |  |          |
|---|----------|--|----------|
| 1984 MF 850 Hydro.....                                    | \$25,000 | MF 82.....                             | \$700    |
| 1980 New Idea 801 Diesel 4 Wheel<br>Drive Power Unit..... | \$19,000 | NI 843, 3R Corn Head                   |          |
| 1978 MF 760 Hydro.....                                    | \$16,000 | MF 6 Row 30" Corn Head                 |          |
| 1978 JD 7700 Hydro.....                                   | \$12,000 | MF 4 Row 30" Corn Head                 |          |
| 1977 MF 750 Gear.....                                     | \$14,000 | 1980 MF 550 Hydro.....                 | \$14,000 |
| 1977 MF 760 Hydro.....                                    | \$15,000 | 1976 AC Gleaner F Gas, w/13' Head..... | \$3,500  |
| 1977 MF 750 Gear.....                                     | \$12,000 | 1976 III 715, Hydro w/13' Head.....    | \$4,500  |
| 1976 MF 760 Hydro.....                                    | \$9,000  | MF 300 Dsl. w/13' Head                 |          |
| 1974 MF 760 Hydro.....                                    | \$7,500  |  |          |
| 1973 MF 760 Hydro.....                                    | \$6,000  |  |          |
| 1973 MF 510 Gear.....                                     | \$3,500  |  |          |
| 1973 MF 510 Gear.....                                     | \$5,000  |  |          |
| 1972 MF 760 Gear.....                                     | \$5,000  |  |          |
| 1971 MF 510 Gear.....                                     | \$3,000  |  |          |
| 1969 MF 510 Hydro.....                                    | \$7,500  |  |          |
| 1966 MF 510 Diesel.....                                   | \$2,500  |  |          |
| IH 91 w/2 Heads.....                                      | \$1,200  |  |          |

**USED EQUIPMENT**

|  |         |
|--|---------|
| MF 2-Way Plow.....                             | \$600   |
| MF 12' Transport Disk.....                     | \$1,800 |
| NH 310 Baler w/Steel Whls. & Engine Mtg. ....  | \$2,400 |
| MF 345, 3-16 Auto Reset 3PT Plow.....          | \$2,400 |
| MF 351 19 1/2 ft. Soil Finisher.....           | \$5,200 |
| Landoll 10 ft Soil Finisher.....               | \$3,200 |
| Danuser Post Driver.....                       | \$1,650 |
| Danuser Post Hole Digger.....                  | \$640   |
| Danuser Wood Splitter.....                     | \$780   |
| EZ Trail 6 Ton Running Gear.....               | \$550   |
| EZ 475 Bu. Self Unloading Grain Cart.....      | \$6,400 |
| MF 820 Hyd. 19 ft. Wing Disc.....              | \$8,500 |
| JD 336 Baler.....                              | \$2,600 |
| Dunham Front End Ldr.....                      | \$1,500 |
| 48" Demo 3 Pt. Rotary Tiller.....              | \$1,075 |
| 6' Rotary Cutter.....                          | \$525   |
| New 8' Myer Snow Plow to fit Farm Tractor..... | \$1,400 |
| AC Forage Wagon.....                           | \$1,600 |
| IH 4R Fast Hitch Cultivator.....               | \$650   |
| Little Giant 26' Baler Elevator.....           | \$800   |
| MF 124 Baler w/Thrower.....                    | \$1500  |

**USED TRACTORS**

|  |          |
|--|----------|
| MF 399, 4WD.....                             | \$22,500 |
| MF 399, 2WD.....                             | \$18,500 |
| MF 390.....                                  | \$15,900 |
| MF 2705 w/Cab.....                           | \$15,500 |
| MF 1150 w/Cab.....                           | \$6,500  |
| MF 1135.....                                 | \$7,500  |
| MF 50A 1LB.....                              | \$12,500 |
| MF 1130.....                                 | \$5,200  |
| MF 1080.....                                 | \$4,500  |
| MF 285 w/New Tires & Engine<br>Overhaul..... | \$9,500  |
| JD 3010 Gas.....                             | \$2,600  |



**SCHMIDT "HEAVY DUTY  
REBUILT TABLE AUGER"**

Get Your Table Auger Repaired For Your  
Combine. Replace Complete Section. Same As  
New. All Makes And Models. Why Buy New,  
Get Your Auger Repaired SAVE!!!

Call Now For Appointment  
And Price Quotation To  
Have Your Auger Repaired

**Best Buys in Used Equipment**

**TRACTORS:**

- IH Farmall C
- Farmall C w/6 Ft. Woods Undermounted Mower
- Int F12 w/Cult., \$450 - Runs
- Int 300 Utility
- Int. 404 Utility w/Loader - Real Nice!
- JD 301 Utility w/Loader, Gas, Good Shape!
- Cub w/Mott Mower - Real Nice
- Cub Lo-Boy w/Mott Mower
- Cub w/60" Deck
- Farmall Cub w/Gang Mower
- 154 Lo boy w/60" Mower
- Davis Brown 990 - Fair Cond
- Cub Equipment - Plow, Cult, Disc, Etc
- Massey Harris Model 30
- Ford 2110 Gas LCG w/730 Ford Loader

**HAY & FORAGE:**

- NH No 26 Blower
- (2) NH No 27 Blowers
- Gehl FBB 88 Blower
- Gehl 99 Hi-Throw Blower
- 550 IH Chopper (Parts)
- Hession PT-10, \$1,500
- JD 24T Baler w/Kicker- \$1,025
- NH 69 Baler w/o Thrower
- IH 27 Baler - Real Nice
- IH 430 Baler w/Thrower
- IH 445 Baler, 1 Yr Old
- IH Direct Cut Head For 15 or 16 Chopper
- Fox Blower
- JD 1209 Mower Cond., 9 Ft. - \$3,700
- Pittsburg 3 pt. Wheel Rake- \$650

**OUTDOOR POWER EQUIP.-**

- Cub Cadet 108 Mower
- Cub Cadet 105 w/Mower
- Cub Cadet 782 - Real Nice Shape!
- Cub Cadet 982, 20 Hp., w/50" Mower-Rental, \$3,200
- Cub Cadet 482 & 582
- JD 110 w/Mower
- JD 210 w/Mower
- Grasshopper 1822 Diesel, With or Without Bagger
- Grasshopper 1822 Gas, With or Without Bagger
- Toro Professional 76 w/3 New Extra Reels
- Woods 210 Offset Mower
- Woods R107 HD Trailing Mower, Good Shape!
- Jacobsen 1974 F-20 Fairway Mower

**PLANTERS:**

- IH 56 4-Row Planter
- IH 658 6-Row Narrow Dry Fert.
- IH 3 Pt. Hitch Rotary Hoe, 15 Ft. Folding Case Pull Type Rotary Hoe
- JD 1240 Plateless, 30", Lq
- JD 7000 6-Row Planter, 30", Dry Fert And Insecticide, Field Ready- \$5,500
- Oliver 76 18x7 SD Grain Drill

**TILLAGE:**

- Pittsburg 11'6" Disk
- IH 37, 35 In Various Sizes
- IH 3 Pt. Hitch 2-Bot Plow
- Int 360 20 ft Trailing Field Harrow
- IH 78 Front Mtd 4-Row Cultivator w/Quick Attach, For IH 66 Series
- 1-Bot Trailing Plow
- Dunham Lehr 12' Packer Mulcher Poor Cond
- Case 12 Ft. Trailer Chisel Plow

**COMBINES:**

- IH 227 CH, fits 315, 205 or 203
- IH 205 w/10 ft. Platform, \$3,000
- IH 844 Cornhead - \$2,500
- IH 810, 13 Ft Head - \$2,500
- MF 1144 4-Row Wide CH, \$4,250
- 744 Wide Cornhead for 715, Ex. Cond
- 743 N Cornhead for 815, Ex. Cond
- MF 510 Diesel Nice Shape

**COMBINES & EQUIP. FOR PARTS:**

- (2) IH 315's
- IH 403 Gear, 4R W Hd & 12 Ft Plat.
- IH 227 Cornhead
- IH 700 13' Platform
- IH 550 Chopper (Parts)
- 400 6R Cyclos- Parts or Field Use
- IH 455 & 656 Planters
- JD Van Brunt 13x7

**MISCELLANEOUS:**

- IH 540 Manure Spreader - Nice!
- Ag Chem 500 Gal Trailing Sprayer, Like New!
- Freeman Loader for IH 424
- Mormidge 400 Bu. Grain Dryer - Set Up For Natural Gas, Can be converted to LP gas, \$1,600
- Martin 3300 Gal Liquid Tanker w/Injector
- IH Loader For 300 Utility
- N. 6'x53 Ft. Transport Auger

Good Selection of  
Used Cub Cadets In Stock

**ERB & HENRY EQUIP., INC.**

New Berlinville, PA  
One Mile North of Boyertown  
215-367-2169



**M.M. WEAVER  
& SONS, INC.**

Leola, PA 17540

(717) 656-2321

Located: 4 miles West of New Holland on Route 23, 1 1/2 miles Northeast of Leola on the North Groffdale Road, 1 mile on the right, opposite Groffdale Mennonite Church.