

Virginia Weekly

Richmond Va
Oct. 27, 1988

WEEKLY REVIEW IN VIRGINIA MARKETS IN REVIEW; OCT. 20-26, 1988. FEEDER STEERS AND HEIFERS IN VIRGINIA AUCTION SOLD STEADY-\$2.00, EXTREMES \$3.00 HIGHER WITH FULL ADVANCES ON WEIGHTS OVER 600 POUNDS AS THESE FOUND BEST INTEREST. MIDWEST PRICES WERE STEADY TO \$2.00 HIGHER.

SLAUGHTER STEERS AND HEIFERS IN VIRGINIA SOLD FIRM TO \$1.00 HIGHER FOLLOWING MIDWEST TRENDS OF 50 CENT TO \$1.00 HIGHER.

COWS AND BULLS IN VIRGINIA AND THE MIDWEST SOLD MOSTLY STEADY OCCASIONALLY \$1.00 HIGHER. BEEF PRODUCTION WAS DOWN 1 PERCENT FROM LAST WEEK AND UNCHANGED FROM A YEAR AGO. AVERAGE DRESSED WEIGHTS WERE 8 POUNDS HEAVIER THAN LAST YEAR.

VEAL AND CALF PRICES IN VIRGINIA AND THE MIDWEST WERE GEN-

ERALLY STEADY. SLAUGHTER WAS 5 PERCENT BELOW LAST WEEK AND 13 PERCENT LOWER THAN LAST YEAR. AVERAGE DRESSED WEIGHTS WERE 6 POUNDS HEAVIER THAN LAST YEAR.

LAMB PRICES IN VIRGINIA WERE \$1.00-2.00 LOWER AS MIDWEST TRENDS WERE STEADY TO \$2.00 LOWER. LAMB SLAUGHTER WAS 4 PERCENT BELOW LAST WEEK AND 5 PERCENT BELOW LAST YEAR. AVERAGE DRESSED WEIGHTS WERE 1 POUND LIGHTER THAN LAST YEAR.

SLAUGHTER HOGS IN VIRGINIA WERE \$1.50-2.00 LOWER AS MIDWEST TRENDS WERE STEADY TO \$1.00 LOWER. FRESH PORK CUT PRICES WERE UNEVEN, MOSTLY \$1.00 LOWER. PORK PRODUCTION WAS UNCHANGED FROM LAST WEEK AND 10 PERCENT ABOVE A YEAR AGO. AVERAGE DRESSED WEIGHTS WERE 1 POUND BELOW LAST YEAR.

THE SOUTHEAST VIRGINIA HOG MARKET CLOSED STEADY THAN LAST WEDNESDAY WITH BAR-

ROWS AND GILTS, US 1-4 200-240 LBS \$37.00-38.00 PER CWT.

AT HARRISONBURG, LYNCHBURG AND TAPPAHANNOCK HOG PRICES WERE \$1.00 LOWER THAN LAST WEDNESDAY AT \$36.00-39.00 PER CWT. SOWS RANGED \$25.00-26.00 AND BOARS \$20.00 PER CWT.

SLAUGHTER STEERS AND HEIFERS 0% SLAUGHTER COWS 12%, SLAUGHTER BULLS 1%, SLAUGHTER CALVES AND VEALERS 0%, FEEDER CATTLE UNDER 600 LBS 65%, OVER 600 LBS 22%.

PRICE RANGES FOR VIRGINIA WEEKLY AUCTIONS

SLAUGHTER CATTLE STEERS; CHOICE 2-3 1150-1300 LBS 67.00-70.00 CHOICE 2-3 1300 LBS & OVER 67.

50 HEIFERS; NO PRICES REPORTED THIS WEEK UTILITY & COMMERCIAL COWS 39.50-49.50 FEW 53.25 BULLS; 1-2 900-1300 LBS 45.00-58.00

1-2 1300-1600 LBS 45.00-58.75 1-2 1600 LBS & OVER 52.00-61.00 SLAUGHTER CALVES AND VEALERS VEALERS -

HIGH CHOICE AND PRIME 100-250 LBS 82.00-86.00 GOOD AND CHOICE 100-250 LBS 72.00-82.50 CALVES -

GOOD AND CHOICE 250-500 LBS 70.00-80.00 SLAUGHTER LAMBS HIGH CHOICE & PRIME 95-125 LBS

Lancaster Farming, Saturday, October 29, 1988-A9

54.50-58.50 SLAUGHTER HOGS US 2-4 200-250 LBS 36.00-38.50 SOWS US 1-3 300-500 LBS 25.50-31.00 FEEDER CATTLE STEERS; MEDIUM 1 200-300 LBS 95.00-101.00 300-400 87.00-104.00 400-500 80.00-95.00 500-600 84.50-91.50 FEW 73.50 600-700 72.50-86.60 700-800 71.00-81.50 800-900 69.50-80.25 HEIFERS; MEDIUM 1 300-400 LBS 70.00-85.00 400-500 70.00-84.00 500-600 67.75-79.00 600-700 65.00-77.25 700-800 62.00-77.00 800-900 60.00 0940E WH BBL

MEDIUM AND LARGE FRAME, 200-300 LBS. TO 94.00, 300-400 LBS. 76.00-90.00, 400-600 LBS. 75.00-85.00, 600-800 LBS. 61.00-73.00, 800-1000 LBS. 60.00-67.00.

HOLSTEIN AND HOLSTEIN X STEERS, FEW 700 LBS. 59.00-60.50. HEIFERS 300-400 LBS. 63.00-76.00, 400-600 LBS. 60.00-68.00, 600-800 LBS. 55.00-68.00.

BULLS 300-400 LBS. 74.00-90.00, 400-600 LBS. 65.00-74.00, 600-800 LBS. 58.00-72.00, 800-1000 LBS. 54.00-62.00.

DAIRY REPLACEMENTS, 30 HEAD; SPRINGING HEIFERS SMALL 500.00-600.00; FRESH COWS 600.00-890.00; OPEN HEIFERS 600-800 LBS. 60.00-65.00, 200-300 LBS. 75.00-89.00.

PIGS AND SHOATS, 130 HEAD, FAIR DEMAND, BY THE HEAD, 20-30 LBS. 9.00-15.00, 30-45 LBS. 13.00-22.00, 50-70 LBS. 18.00-28.00; BY THE POUND, 40 HEAD, 100-170 LBS. 33.00-39.00.

SLAUGHTER HOGS, LIGHT RUN, 215-245 LBS. 38.75-39.50, 320 LBS. 33.50.

SOWS, 300-500 LBS. 28.00-31.50, 500-600 LBS. 27.00-30.00.

BOARS 27.00-28.25.

NOTE: NEXT WEDNESDAY, NOV. 2, SPECIAL FEEDER CATTLE SALE, 7 P.M.

Four States Livestock

Hagerstown, Md.

Wed., Oct. 26, 1988

Report supplied by Auction

SLAUGHTER: FED STEERS- GOOD RUN, STEADYS. PRICES, PRIME 72.00-73.00; CHOICE 68.00-72.00; SELECT 61.00-68.00; STANDARD 55.00-61.00; HOLSTEINS SELECT 61.00-63.00, STANDARD 52.00-60.00.

FED HEIFERS, LO CHOICE 63.00-64.00; SELECT 56.00-62.00; DAIRY CULLS 48.00-54.00.

COWS, STEADY PRICES, HIGH YIELD 48.00-49.00; UTILITY 44.00-48.00; CANNER 40.00-44.00 DOWN; SHELLY 40.00 DOWN.

BULLS, FEW MEDIUM WEIGHTS 50.00-52.00.

VEAL CALVES, LARGE RUN, 150-200 LBS. 85.00-90.00; GOOD 300-400 LBS. 70.00-79.00; STANDARD 70.00-85.00; CULLS 80-100 LBS. 75.00-84.00, 60-80 LBS. 70.00-78.00.

RETURN TO FARM CALVES, GOOD DEMAND FOR BULLS.

HOLSTEIN BULLS 100-120 LBS. 125.00-150.00, 90-95 LBS. 100.00-125.00.

HOLSTEIN HEIFERS 85.00-99.00.

BEEF X 85.00-100.00.

LAMBS CHOICE 57.00-58.00; GOOD TO 55.00.

GOATS 30.00-55.00.

STOCKER, 100 HEAD, STEERS,

Peoria Sheep

Peoria, Illinois

Tuesday, October 25, 1988

FEDERAL-STATE MARKET NEWS FLASH, MIDSESSION AND CLOSE SHEEP: 200 TRADING MODERATE.

COMPARED WITH LAST TUESDAY SLAUGHTER LAMBS 1.00 TO 3.00 LOWER. NOT ENOUGH SLAUGHTER EWES FOR A MARKET TEST

SLAUGHTER LAMBS: CHOICE AND PRIME 100-125 LBS. 56.00-58.00, FEW 60.00

CHOICE 95 125 LBS. 54.00-56.00

MARKET YOUR FORMULA FED CALVES WITH AREA PACKER

Our valued growers weigh their own calves.
Domenic Venuto, Inc.
622 Federal Street
Philadelphia, PA 19147

215-339-9921
or 215-467-9614
or 215-389-VEAL

CRIPPLED AND DISABLED

Cows, Steers & Bulls For Slaughter Under USDA Inspection

Call Wayne Taylor
717-866-6289
215-286-9400
Lebanon, Berks,
Lancaster & Chester
Counties



ATTENTION FARMERS

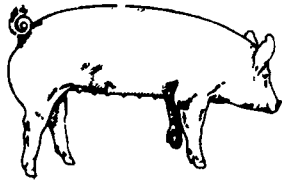
EVERY MONDAY HATFIELD PACKING CO. and MOYER PACKING CO.

Will Receive Your Hogs and Cattle at the **DANVILLE LIVESTOCK MARKET**
RD 4, Danville, PA

- We will receive your hogs from 8 AM to 12 Noon every Monday. Your hogs will be weighed and paid for immediately.
- We will also accept your sows & boars.
- Your cattle will be received from 12:30 to 5 P.M. We will either pay you for your cattle immediately or you may sell them dressed weight.
- There will not be a commission or yardage fee deducted from your check.
- You may call our office Monday morning and we will be able to tell you the base price for hogs for the day.

MELVIN M. LEHMAN - Owner
Danville Buying Station

Phone: 717-275-2880



EMERY'S BUYING STATION

OPEN TO RECEIVE YOUR MARKET HOGS

AT THE GREEN DRAGON MARKET RD 4, EPHRATA, PA 17522 1 MILE NORTH OF EPHRATA ON NORTH STATE STREET.

HOURS: MONDAY, TUESDAY, and WEDNESDAY 7:00 A.M. to 11:30 A.M.

215-458-5677 Residence
717-733-9648 Office

YOU ARE PAID FOR YOUR HOGS IMMEDIATELY

Ken & Lois Emery, Proprietors

FREE CROP INSURANCE SEMINAR: CROP INSURANCE, WHAT IS IT?

Tuesday, November 1, 1988 7 P.M. Holiday Inn

Wayne Avenue, Exit 5 of I-81
Chambersburg, PA 17201

A USDA Representative will be available to comment on the 1988 Disaster Assistance Program.

Sponsored by:

Stine Davis & Peck Insurance

4050 Lincoln Way West
Chambersburg, PA 17201

Phone 717-369-5500

For More Information Contact:

Rita G. McMullen, AAI, CPIW
Stine Davis & Peck Insurance
717-369-5500

BOYDELL FARMS

302 Iona Rd., Lebanon, PA 17042
Phone: 717-272-8943

DISTRIBUTORS FOR



SCHLESSMAN'S

HYBRID CORN
805 - 711 - 642

PROVEN RESULTS... QUARRYVILLE TRIAL
N.C. #2515 = 151.2 Bus. Per A.
P #3378 = 144.7 Bus. Per A.

WHEAT

- CARDINAL -Proven One Of The Highest Result On Test Plots
- New - 863 G.R. (Bearded)
- New - Allen (Bearded)
- Tyler • Scotty
- Various Other Varieties Available

TIMOTHY AND CLIMAX TIMOTHY Rye And Alfalfas

BALER TWINE

FERTILIZERS

WHOLESALE & RETAIL

SWINE PRODUCTION SALES AND SERVICE

Feeding Programs And Services To Meet Your Individual Needs

Computerized Record Keeping System

Contracts Available



Supplying Farm Fresh Feeder Pigs

Marketing and Hedging Services

Marketing of Genesis Breeding Stock

Developing Individual Financial Programs

Quality Products And Services - Working For YOU

419 West High Street
Elizabethtown, PA 17022

PA Toll Free
1-800-468-5524

Elizabethtown
(717) 367-1525

Shippensburg
(717) 532-7845