

# U.S. Inspected Livestock Slaughter

Under Federal Inspection  
Wed., Oct. 26, 1988

	CATTLE	CALVES	HOGS	SHEEP
WED., 10/26/88 (EST)	128,000	10,000	338,000	19,000
WEEK AGO (EST)	129,000	9,000	336,000	19,000
YEAR AGO (ACT)	130,000	10,000	323,000	19,000
WEEK TO DATE (EST)	383,000	27,000	1,005,000	58,000
SAME PD LT WK (EST)	383,000	27,000	995,000	57,000
SAME PD LT YR (ACT)	384,000	31,000	944,000	58,000

## Oklahoma City Feeder Cattle Weekly

Oklahoma City  
Wednesday, October 26, 1988  
USDA

WEEKLY CATTLE SUMMARY: COMPARED WITH LAST WEEKS CLOSE-FEEDER STEERS UNDER 600 LB. AND ALL HEIFERS 1.00-2.00 HIGHER; FEEDER STEERS OVER 600 LB. FULLY STEADY. QUALITY VERY ATTRACTIVE THIS WEEK WITH LARGE SUPPLY OF ENGLISH BREEDS AND ENGLISH EXOTIC CROSSES. MARKET WAS ACTIVE ON ALL WEIGHTS THRUOUT TRADING PERIOD BUT DEMAND ESPECIALLY GOOD ON 400-600 LB. CALVES. SLAUGHTER COWS AND BULLS STEADY TO 1.00 LOWER. SLAUGHTER CATTLE DEMAND CLOSED FAIR. COUNTRY COW BUYERS WERE ACTIVE DURING MONDAY'S AND TUESDAY'S TRADING SESSIONS, PURCHASING 60 PERCENT OF THE COWS OFFERED FOR THE WEEK. RECEIPTS THIS WEEK 12,500; LAST WEEK 15,894; LAST YEAR 9,549. CONSIST OF SUPPLY: 35% YEARLING FEEDER CATTLE; 55% CALVES; AND 10% COWS & BULLS.

BULK PRICES

FEEDER STEERS: MEDIUM & LARGE FRAME 1, 225-300 LB. 110.00-120.50; 300-400 LB. 101.00-113.50; 400-500 LB. 94.50-105.00; 500-600 LB. 88.00-96.00; 600-700 LB. 81.50-87.50; 700-800 LB. 80.00-85.00; 800-900 LB. 77.00-80.50. HOLSTEINS: LARGE FRAME 2, 350-500 LB. 79.00-85.50; 625-800 LB. 69.00-72.50; 850-900 LB. 66.75-68.25.

FEEDER HEIFERS: MEDIUM & LARGE FRAME 1, 275-400 LB. 83.50-91.50; 400-500 LB. 82.00-89.50; 500-600 LB. 79.50-86.50; 600-700 LB. 76.50-80.25; 700-725 LB. 76.50-77.50.

SLAUGHTER COWS: CLOSING PRICES: CUTTER, UTILITY, AND COMMERCIAL 1-4 42.50-48.00. CANNER AND LOW-DRESSING CUTTER 1-2, 38.00-43.25.

SLAUGHTER BULLS: Y.G. 1, 1050-2000 LB. 54.25-59.25.

REPLACEMENT OR FEEDER COWS: PRE TESTED FOR BANGS, PREGNANCY AND AGE. MEDIUM AND LARGE FRAME NO. 1 MUSCLED COWS-- 2-4 YEAR OLD 800-975 LB. 3-8 MONTH BRED 64.00-68.50 PER CWT. 4-8 YEAR OLD 875-1075 LB. 3-8 MONTH BRED 48.50-61.00 PER CWT. 9-10 YEAR OLD 875-1075 LB. 3-8 MONTH BRED 42.50-48.00 PER CWT. RPM & RC 0235C RC

## Peoria Cattle

Thursday, October 27, 1988

TRADING AND DEMAND MODERATE FOR SLAUGHTER HEIFERS AND LIGHTER WEIGHT STEERS, LIGHT TO MODERATE FOR STEERS OVER 1225 LBS. COMPARED WITH LAST WEEK'S CLOSE SLAUGHTER STEERS SOLD .50 TO 1.00 LOWER, SLAUGHTER HEIFERS MOSTLY 1.00 LOWER, INSTANCES 2.00 LOWER. SLAUGHTER COWS WEAK TO 2.00 LOWER IN MODERATE TRADE. BULLS STEADY TO FIRM. ALL

SALES MONDAY WITH NO CLASS WELL TESTED LATER IN THE WEEK. SUPPLY MAINLY SELECT TO AVERAGE CHOICE SLAUGHTER STEERS AND HEIFERS WITH ABOUT 7% COWS. ESTIMATED RECEIPTS THIS WEEK ABOUT 2,000 AS COMPARED WITH ACTUAL RECEIPTS OF 1407 A WEEK AGO AND 2326 A YEAR AGO. SLAUGHTER CLASSES: STEERS: CHOICE 2-3 1150-1300 LBS. 69.25-70.00 CHOICE 2-4, MOSTLY 3, 1100-1250 LBS. 68.00-69.50 FEW 1225-1350 LBS. 67.50-68.00 950-1100 LBS. 66.50-68.00

SELECT & CHOICE 2-3, 1000-1200 LBS. 65.00-67.50 HEIFERS: CHOICE 2-3 1125-1200 LBS. 68.00-69.00 CHOICE 2-4, MOSTLY 3, 1000-1200 LBS. 67.00-68.00 850-1000 LBS. 64.00-67.00 CHOICE 3-4, FEW 5 1000-1150 LBS. 64.00-67.00 SELECT & CHOICE 2-3, 900-1100 LBS. 63.00-66.00 COWS: BREAKING UTILITY AND COMMERCIAL 2-3 42.00-46.50 CUTTER AND BONING UTILITY 1-2 44.00-48.00 CANNER AND LOW CUTTER 1-2 38.00-43.00

# EVERGREEN TRACTOR CO., INC.

## ANNOUNCING THE AVAILABILITY OF USED PLANTER & TILLAGE PARTS FOR THE FOLLOWING MACHINES:

- 7000 Planters
- 2500 Plows
- F350 Hydraulic Reset Plows
- Cultivator Parts
- Grain Drills
- Trip Plows
- Disc Harrows
- Cultipackers and Roller Harrows (John Deere and Brillion)

This is a partial listing. Please call for availability even if your machine is not listed.

### TRACTORS:

- JD 3020 Gas, Side Console.....\$5,850
- JD 4430, QR, Fender Tractor.....\$12,300
- JD 2640 Diesel.....\$10,900
- JD 3020 Del. Syncro, Wide Front, Dual Remote.....\$8,950
- JD 2040 Diesel.....\$6,950
- Cab, Hinkler, model 1300 for 2630 Tractor, nice.....\$975
- JD 2640 w/Reel Guard.....\$10,900
- JD 2750 Sound Guard, Like New
- JD 1830 Diesel Hi-Lo
- JD 4230 Power Shift, High Back Seat, Sharp

### COMBINES & PICKERS:

- 6620 Side Hill, turbo hydro, heater & air, monitor, spreader.
- NI 324 2 Row Wide 12 Row 327 bed.....\$3,950
- NI 818 combine with 13' flex head. Sharp #244 ~~SOLD~~ dead
- #244 Corn Head
- NI 2 row narrow w/sheller, A1.....\$3,950
- 1 78 653 6 Row Bean and Sunflower Head
- 6600 ~~SOLD~~ Chopper
- JD #243 2 Row 30" Snapper Head.....\$2,350
- NI Picker, 2 Row Narrow 12 Roll Bed, Nice.....\$5,800
- JD #343 3 Row 30" Corn Head
- JD 300 Husker w/3 Row Head
- JD 40 Combine w/2 Row and Grain Head
- JD 6620 LL Hydro Combine, Nice
- 13' Rigid Head for Side Hill.....\$1,750
- JD 13' Grain Head w/Floating Bar
- JD 213 Flex Head ~~SOLD~~ Reel, Sharp.....\$5,250
- JD 4400 (1979) Diesel Combine, Loaded, Sharp
- Gleaner Fil Diesel Combine w/438 Corn Head and 13' Grain Platform
- NI 12 roll husking bed w/elevator.....\$2,450
- JD 10' Grain Head for 3300 or 4400 Combine.....\$1,850
- NI #702 Uni System w/#737 Picker And #743 3 Row Corn Head, Sharp Unit.....\$8,750
- JD #443 Corn Head
- JD #444 Corn Head
- JD 300 Husker w/243 Corn Head

### HAY & FORAGE EQUIPMENT:

- NH 272 Baler w/58 thrower, nice.....\$3,850
- (1) (2) NH #469 Haybine
- NH #282 Baler w/Thrower
- JD 640 Rake
- NI #402 Rake
- JD 14T Baler w/Chute.....\$575
- JD 1 Row, Row Crop Attachment, Nice.....\$550
- JD 336 Baler w/#30 Ejector, Nice.....\$5,850
- PZ Rake Tedder.....\$750
- JD 5 1/2' Pickup Attachment
- JD 2 Row 30" Row Crop Attachment
- Hydro Drive side mount Sickle Mower, almost new.....\$1,575
- Ford 3 Pt. Flail Mower

### PLANTERS & GRAIN DRILLS:

- JD 1300 6 Row Planter Radar Monitor, Sharp.....\$3,450
- JD #1240 Plateless Planter.....\$1,850
- White 5400 6 Row Air Planter.....\$2,350
- JD 7000 6 Row No-Till Conservation Planter w/Auger Fill.....\$8,500
- JD 7000 6 Row No-Till Planter, Nice.....\$5,850
- JD 1240 Plate Planter.....\$950
- IH #10 ~~SOLD~~ Drill 13x7.....\$400
- JD Model B 13x7 Single Disc Drill w/grass, nice.....\$625

### Coming In...

- JD F950 15' Roller Harrow
- JD 500 Grain Cart, almost new
- JD 300 Husker w/243 Corn Head
- JD 7000 4 Row Conservation Planter
- NI Tandem Axle Single Beater Spreader
- JD BW 18' Wing Fold Disc
- JD BW 14' Disc
- NH #791 Tandem Axle Spreader

### PLOWS-MOLDBOARD AND CHISEL:

- JD 78 2500 Plow.....\$3,850
- JD F350 8-16" Hyd. Reset Plow.....\$2,350
- JD Model 1610 14' Chisel Plow.....\$2,850
- JD #1450 5B 20" Plow.....\$2,250
- IH 530 5B Trip Plow.....\$950
- JD 1450 6-16" Semi-Mtd. Plow.....\$2,250
- JD 3200 5B Trailer Plow, Auto Reset.....\$3,450
- Oliver 565 8-16" Plow.....\$1,250
- JD #1600 12' Chisel w/Walking Tandems.....\$2,450
- JD 4-16 #1450 Semi-Mtd. Plow.....\$2,450
- Brillion 9 Tooth 3 pt. Chisel Plow.....\$1,150
- JD 5x18" 2500 Auto Reset Plow.....\$3,450
- IH #65 7 Tooth Pull Type Chisel.....\$1,850
- White 12' 3 Pt. Chisel.....\$1,275
- JD #2500 6B 18" Auto Reset Plow.....\$3,650

### DISCS AND FIELD CULTIVATORS

- JD 220 Center Fold Disc, Nice.....\$5,350
- JD 12' TWA Plowing Disc.....\$3,250

### ROLLER HARROWS AND CULTIMULCHERS

- IH 315 12' Roller Harrow.....\$3,450
- JD F950 12' Roller Harrow.....\$3,450
- Brillion 10' Roller Harrow.....\$975

### CULTIPACKERS

- (1) (2) Brillion 25' Wing Fold Packer.....\$4,500
- JD 12' Cultipacker.....\$1,050
- Brillion 16' Packer w/Transport.....\$1,875
- Brillion 9'.....\$425
- Brillion 10' w/Big Shaft.....\$950
- Brillion 15' w/Transport.....\$1,675
- Brillion 12' no Transport.....\$1,050

### ROW CROP CULTIVATORS & ROTARY HOES

- JD 400 Rotary Hoe, almost new.....\$1,850
- (1) (2) JD RM 4 Row Cultivator.....\$975
- JD 6 Row 30" RM Cultivator.....\$1,550
- JD 400 Rotary Hoe.....\$1,475
- JD 4 Row Front Mount Cultivator For 3020.....\$1,550
- IH 4 Row 3 pt. Cultivator.....\$650

### MISCELLANEOUS:

- 14.9x38 Direct Axle Dual Wheels
- JD 28' Implement Trailer.....\$1,875
- Kelley Loader for JD Row Crop.....\$1,650
- JD 42 Front Blade 8'.....\$350
- NH 352 Grinder-Mixer.....\$2,450
- JD 660 Spreader w/Hyd. Tail Gate.....\$3,650
- Donahue Implement Trailer.....\$1,750
- JD 27 Stalk Shredder.....\$3,650
- Skid Steer Loader Trailer w/Brakes.....\$1,150

### GRAIN DRYERS:

New Farm Fans AB8 Auto-Batch Dryer. MUST MOVE. CALL FOR PRICE... (Dealer Inquiries Welcome)

### NEW JOHN DEERE EQUIPMENT AT GENERIC PRICES

- 2985 2 Wheel Drive Tractor.....\$23,500
- JD 575 Del. Skid Steer Loader w/54" Bucket.....\$12,950

Flash JUST RECEIVED LOAD OF NEW GRAIN DRILLS Flash

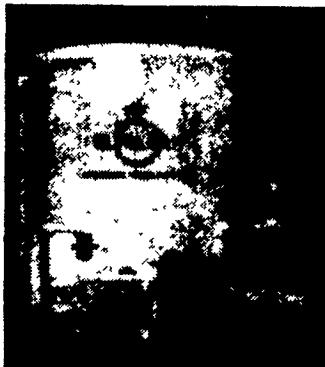
## MILLER DIESEL INC.

6030 Jonestown Road  
Harrisburg, PA 17112

Phone 717-545-5931 - Interstate 81 Exit 26

### ANOTHER SOLUTION TO HAZARDOUS WASTE!

The First Anti-Freeze Recycling System "GLYCLEAN"



FOR COMPLETE INFORMATION WRITE OR CALL



## ARRIVAL SURVIVAL MoorMan's Beef Cattle Boost Medicated

They're right off the truck, probably off feed and vulnerable to sickness

Getting those calves eating and gaining again is the key to your profitability and maybe their survival. A simple, economical way to do it is with MoorMan's Adjust ment Program

Just add 1 lb per head daily of Beef Cat tle Boost® to your own forage and grain. Feed it for 28 days after arrival. It's highly palatable and easily digested by stressed calves. So they eat more feed which helps increase gain and reduce sickness.

Beef Cattle Boost contains Aureo S 700® which aids in the maintenance of weight gain in the presence of respiratory disease such as shipping fever.

Ask your MoorMan Representative about Beef Cattle Boost. It's the easiest way to help your calves survive and thrive.

\*Trademark of American Cyanamid Company

The efficiency experts of animal agriculture

Tom 717-738-2509

Bill 717-548-2718

