

Hottest Fabric

(Continued from Page B2)

New Wools

The purpose for the lead line is to promote the luxurious, long wearing comfort and fashion of wool. The new varieties modeled, demonstrated that wool can give many different looks. These are achieved by the chemical finishes applied to woolsens.

Shrinkage and wool's unwashability has always been a disadvantage. But today's technology has changed that. The new "Superwash" label is giving wool a new image. "Superwash" labeled products are 100 percent wool that can

be machine washed and machine dried using ordinary household detergent.

Wool also can be treated permanently to make it mothproof, stain proof, rain proof and fire retardant.

Unlike synthetics that are made from dwindling resources, wool is a natural and renewable resource. Sheep find adequate nourishment on marginal land and replenish the soil that feeds them.

Shear a sheep today and a year from now, when the fleece has long since become fabric, the same sheep is ready again for shearing and the cycle repeats.

Ordinarily, wool yarn is spun from several different lots of wool

LANCASTER — The Lancaster County 4-H Therapeutic Riding for the Handicapped, an accredited member of the North American Riding for the Handicapped, will conduct a fundraising trail ride Sunday, October 30. Proceeds will benefit the Silver Shoes 4-H Therapeutic Riding Club.

The 15-mile trail ride will be held in northern Lancaster County on trails in the Cornwall Fire Tower area, starting from Lower Hopewell Horse Center, and will be guided by Dave Rintz. Any person with a horse to ride is invited to participate.

The Ride for the Handicapped raises funds enabling handicapped persons to experience the thrill,

satisfaction, and challenge of being on horseback. For many of these people, horseback riding becomes a means of improving balance, coordination, endurance and strength. The disabled become mobile, learn to guide a responsive animal and grow in self esteem.

Participants are asked to get friends, relative and neighbors to pledge money for each mile they ride. Riders who do not get sponsors will be required to pay a \$5 entrance fee the day of the ride.

Pledges are due two weeks after the ride.

Sign in on the day of the ride will be from 10 a.m. to 10:45 a.m. with the ride beginning promptly at 11 a.m. Riders may wish to provide their own lunches, but drinks and a small snack will be provided at midpoint.

For advance registration materials contact Ellen Turnbull at (717) 626-7933 or write to her at 104 West End Ave., Lititz, PA 17543.

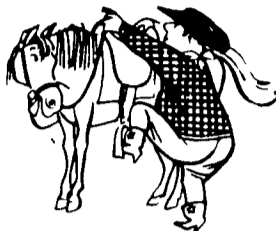


Judges for the KILE Leadline competition deliberated over the final placings. From left, Ron Miller, Lorraine Lewis and Rebecca Harmon.

to obtain various color mixes and maintain uniformity and quality.

With all wool's redeeming qualities, the woolly promoters who flocked to KILE remind consumers that the hottest fabric on the fashion scene is wool—so wear it.

SADDLE UP!



TO BETTER EQUIPMENT
Find It In Lancaster Farming's Classified Pages.

FISHER'S PAINTING

Specializing In Farm Buildings And Roof Coating With Aerial Equipment

WE SELL DISCONTINUED COLORS AND MISMATCHES IN OUR PAINT STORE
PRICED FROM \$1.00 TO \$10.00 PER GALLON
900 Gallons Of Int./Ext. Latex (Light Tan) From Factory
Special \$6.50/Gallon

FISHER'S PAINTING
4056 A Newport Road, Kinzers, PA 17535
(Across From Pequea Valley High School)
(717) 768-3239

See the most exciting new coal stoves ever ...

The STRATFORD



DUSSINGER'S QUALITY STOVES
2533 Old Phila. Pk. Smoketown, Pa. 17576
3 Miles East of Lancaster
Tues, Thurs & Fri. 10-8,
Wed & Sat. 10-5
(717) 397-7539

COOK A MONTH OF LUNCHES. FREE.

Get a FREE tankful of propane—up to 100 lbs.

We'll give you a FREE tankful of propane (up to 100 lbs.) when you sign up as a new, credit approved Agway Propane® customer.

- This is our way of saying thank you for your business. As an Agway Propane customer, you'll get our total "worry-free" service package, including:
- automatic, metered delivery
 - installation to your existing hookup
 - a thorough GAS Check safety inspection of your system
 - 24-hour emergency service from our comprehensively-trained, safety-conscious technicians.

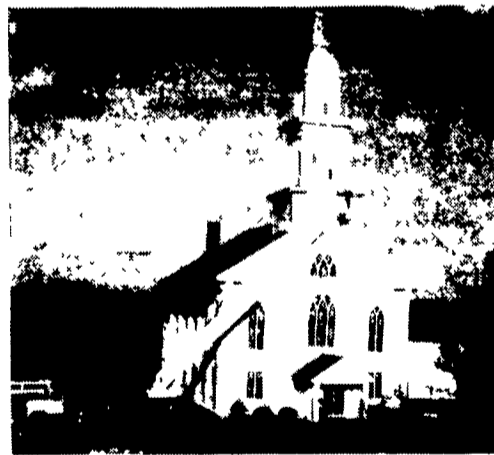
Agway Propane is always economical. And, right now, it's FREE. Call for your FREE tankful today.

Dillerville Road
Lancaster, PA
397-4954 1-800-223-9111



Offer expires 12/31/88 • Maximum free propane per residential household equivalent to a 100 lb tank • © 1988 Agway Propane

For A Professional Job: CALL ON THE PAINTING & WATERPROOFING SPECIALISTS



We Are The Fussy One's

Let Seal-Crete Dress Up Your Church In Its "Sunday Best"

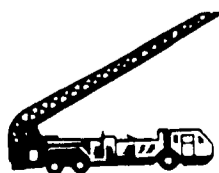
We Specialize In:

- Steeple Painting • Masonry Coating • Roof Coating
- Clear & Colored Water Proofing
- Masonry Cleaning & Restoration
- Sandblasting & Pressure Washing • Concrete Repairs
- * INTERIOR & EXTERIOR

Don't Forget To Call On Us For Your Other Painting & Waterproofing Needs.

AGRICULTURE - COMMERCIAL - INDUSTRIAL - CHURCHES

For FREE Estimate CALL



Seal Crete Inc.

PAINTING & WATERPROOFING
RD 2, Box 417, Ephrata, PA 17522 • 717-859-1127