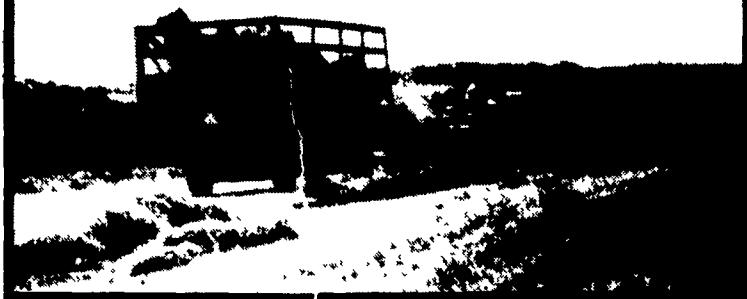


HAY MARKETS



Pa. Grain

October 3, 1988

Report supplied by PDA

COMPARED WITH LAST MONDAY'S MARKET FOR SOUTHEASTERN, CENTRAL AND SOUTH CENTRAL PA: CORN AND WHEAT UNEVEN, MOSTLY STEADY TO .10 LOWER; BARLEY, OATS AND OLD EAR CORN MOSTLY STEADY; SOYBEANS WEAK TO .40 LOWER; NEW EAR CORN LITTLE OFFERED.

SOUTHEASTERN PENNSYLVANIA

CORN NO. 2-Y RANGE 3.00-3.35, AVERAGE 3.18; @WHEAT NO. 2 RANGE 3.75-4.06, FEW REPORTED 3.40, AVERAGE 3.81; *CONTRACT FOR HARVEST, 3.30-3.59; BARLEY NO. 3 RANGE 2.20-2.50, AVERAGE 2.36, *CONTRACT FOR HARVEST 2.00; OATS NO. 2 RANGE 2.25-2.60, AVERAGE 2.44; SOYBEANS NO. 1 RANGE 7.75-8.00, AVERAGE 7.85; *GR. SORGHUM #2 RANGE 2.80, AVERAGE 2.80; OLD EAR CORN RANGE 85.00-115.00, AVERAGE 97.92; **NEW EAR CORN RANGE 63.00-92.00, AVERAGE 70.75.

SOUTH CENTRAL PENNSYLVANIA

CORN NO. 2-Y RANGE 3.00-3.40, AVERAGE 3.24; @WHEAT NO. 2 RANGE 3.20-3.75, AVERAGE 3.52; BARLEY NO. 3 RANGE 2.15-2.65, FEW

REPORTED 2.85, AVERAGE 2.42; OATS NO. 2 RANGE 2.20-2.50, AVERAGE 2.32; *SOYBEANS NO. 1 RANGE 7.75, AVERAGE 7.75; OLD EAR CORN RANGE 88.00-115.00, AVERAGE 99.00; **NEW EAR CORN RANGE 85.00, AVERAGE 85.00.

SOUTHEASTERN, CENTRAL & SOUTH CENTRAL SUMMARY

CORN NO. 2-Y RANGE 3.00-3.40, AVERAGE 3.21; @WHEAT NO. 2-Y RANGE 3.40-4.06, AVERAGE 3.66; BARLEY NO. 3 RANGE 2.15-2.55, AVERAGE 2.35; OATS NO. 2 RANGE 2.20-2.55, AVERAGE 2.35; SOYBEANS NO. 1 RANGE 7.73-8.00, AVERAGE 7.94; OLD EAR CORN RANGE 85.00-115.00, AVERAGE 97.79.

CENTRAL PENNSYLVANIA

CORN NO. 2-Y RANGE 3.00-3.40, AVERAGE 3.23; @WHEAT NO. 2 RANGE 3.40-4.00, AVERAGE 3.55; BARLEY NO. 3 RANGE 2.15-2.40, AVERAGE 2.26; OATS NO. 2 RANGE 2.10-2.50, AVERAGE 2.29; SOYBEANS NO. 1 RANGE 7.56-8.50, AVERAGE 8.05; **BUCKWHEAT RANGE 8.40, AVERAGE 8.40; OLD EAR CORN RANGE 88.00-110.00, AVERAGE 96.67.

WESTERN PENNSYLVANIA

CORN NO. 2-Y RANGE 2.82-3.40, AVERAGE 3.15; @WHEAT NO. 2 RANGE 3.20-3.65, AVERAGE 3.53;

BARLEY NO. 3 RANGE 2.20-2.30, AVERAGE 2.25; OATS NO. 2 RANGE 2.10-2.50, FEW REPORTED 2.70, AVERAGE 2.42; SOYBEANS NO. 1 RANGE 7.60, AVERAGE 7.60; *+BUCKWHEAT RANGE 8.40, AVERAGE 8.40; OLD EAR CORN FEW REPORTED 95.00, AVERAGE 95.00.

MONTH AGO

CORN NO. 2-Y 3.28; @WHEAT NO. 2-Y 3.57; BARLEY NO. 3 2.34; OATS NO. 2.23; SOYBEANS NO. 1 8.52; OLD EAR CORN 97.00.

YEAR AGO

CORN NO. 2-Y 1.89; @WHEAT NO. 2-Y 2.64; BARLEY NO. 3 1.36; OATS NO. 2.149; SOYBEANS NO. 1 5.27, OLD EAR CORN 55.48.

Regional Hay

October 3, 1988

Eastern, Pa.

HAY & STRAW MARKET FOR EASTERN PA. (ALL HAY NO. 2 & BETTER PRICES PAID BY DEALERS AT THE FARM & PER TON.) HAY SLOW, STEADY TO \$10 LOWER; STRAW STEADY TO STRONG.

ALFALFA 85.00-110.00; MIXED HAY 60.00-100.00; TIMOTHY 70.00-100.00; STRAW 45.00-70.00; MULCH 35.00-45.00.

LANCASTER CO.

HAY AUCTIONS

SUMMARY OF LANCASTER CO. HAY AUCTIONS FOR WEEK ENDING 9/30/88. PRICES PER TON: LOADS: 104 HAY, 40 STRAW, AND 44 EAR CORN. ALFALFA 81.00-115.00; MIXED HAY 66.00-142.00; TIMOTHY 86.00-145.00; STRAW 70.00-106.00; EAR CORN 100.00-130.00.

CENTRAL PA.

HAY AUCTIONS

SUMMARY OF CENTRAL PA. HAY AUCTIONS FOR WEEK ENDING 9/30/88. PRICES PER TON: LOADS: 64 HAY, 13 STRAW & 10 EAR CORN. ALFALFA 75.00-135.00; MIXED HAY 55.00-110.00; TIMOTHY 60.00-107.50; STRAW 35.00-71.00; EAR CORN 105.00-140.00.

North Jersey

Market

Hackettstown, N.J.

Tues., Oct. 4, 1988

Hay—Straw & Grain Report

GRAIN HAY 1.35-1.75 BALE.

STRAW 1.30-1.35 BALE.

OATS 6.50 BAG.

New Holland Hay

New Holland, Pa.

Monday, Oct. 3, 1988

Report Supplied by Auction

TOTAL LOADS: 111.
ALFALFA: 65.00-125.00.
MIXED HAY: 64.00-135.00.,
TIMOTHY: 81.00-147.00.
ORCHARD GRASS: 78.00-87.00.
RYE: 3.60-4.25 BU.
OATS: 2.45-3.25 BU.
EAR CORN: 94.00-129.00.
STRAW: 70.00-98.00.

Green Dragon Hay

Ephrata, Pa.

Friday, Sept. 30, 1988

Report Supplied by Auction

TOTAL LOADS: 43.
ALFALFA: 70.00-105.00.
MIXED HAY: 48.00-121.00.
TIMOTHY: 80.00-140.00.
ORCHARD GRASS: 116.00.
RYE: 4.20 & 4.40 BU.
OATS: 2.40 & 3.40 BU.
EAR CORN: 100.00-128.00.
STRAW: 90.00-101.00.

SPECIAL NOTICE!

Vintage Sales Stables Inc.
(Rt. 30, 10 miles East of Lancaster
in Paradise, PA)

HAY, STRAW & GRAIN SALE
Every Thursday at 1 P.M.
Beginning Thursday, September 8,
1988

For Info
717-442-4181 Business
215-458-8518 Home

L. Robert Frame Sr., President
Glenn S. Frame, Manager

Seeking Profits In Commodities Trading?

- Hedging
- Speculating
- Managed Account
- Commodity Options

Call Forney Longenecker,
Commodities Investment Executive,
At (717) 295-8914

SHEARSON
LEHMAN HUTTON
29 E. King St.
Lancaster, PA 17603



HERE TO STAY!

MAKE 1988 THE YEAR TO GET ACQUAINTED WITH
NEW HOLLAND SALES STABLES, INC. - THE ACTION AUCTION

MONDAY

FAT HOGS



EARLY BIRD HOG SALE

7:30 AM

For Your Protection Your Hogs Must
Be Identified

10:00 AM

HORSES MULES



11:00 AM



HAY
STRAW
GRAIN



1:30 PM
BEEF SALE
CALF, SHEEP,
GOATS

WEDNESDAY

DAIRY 11:00 A.M. COWS



HEIFERS, BULLS

NEW HOLLAND SALES STABLES, Inc.

12 Miles East of Lancaster
on Route 23, New Holland, Penna

The Action Auction
717-354-4341

Mgr. - Abe Diffenbach - 717-393-4464
Norman Kolb - 717-397-5538

Field Representatives
Alan Diffenbach 717-354-3297
Luke Eberly 215-267-6608 - 738-1865

WEDNESDAY - 1:30 P.M.
FEEDER PIG SALE



We endeavor to keep our barns cleaner
than yours. State graded until 12 Noon

THURSDAY

10:00 AM

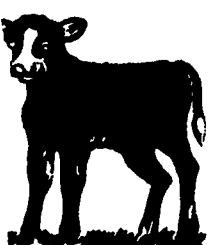
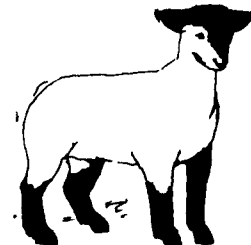
BULLS -



STEERS -
BEEF COWS

1:30 P.M.

CALVES



SHEEP
GOATS

Market your livestock thru New Holland Sales, your neighbor does
Pick-up your check before you leave