



# Livestock market and auction news

Virginia Weekly  
Richmond, Va.

Thursday, Sept. 29, 1988

FEEDER STEERS AND HEIFERS IN VIRGINIA WERE STEADY TO \$5.00 LOWER AS MIDWEST PRICES WERE STEADY TO \$2.00 HIGHER.

SLAUGHTER STEERS AND HEIFERS IN VIRGINIA THIS WEEK -NONE REPORTED. MIDWEST PRICES WERE 50 CENT TO \$1.00 LOWER. THE BOXED BEEF CUT-OUT VALUE ON TUESDAY WAS \$110.06 DOWN 93 CENT FROM LAST TUESDAY.

COWS AND BULLS IN VIRGINIA WERE STEADY TO \$3.00 LOWER AS MIDWEST PRICES WERE \$1.00 HIGHER. BEEF PRODUCTION WAS DOWN 2 PERCENT FROM A WEEK

AGO BUT UP 2 PERCENT FROM LAST YEAR. AVERAGE DRESSED WEIGHTS WERE 8 POUNDS HEAVIER THAN LAST YEAR.

VEAL AND CALF PRICES IN VIRGINIA WERE MOSTLY STEADY AS MIDWEST PRICES WERE STEADY. VEAL AND CALF SLAUGHTER WAS DOWN 6 PERCENT FROM A WEEK AGO AND DOWN 9 PERCENT FROM A YEAR AGO. AVERAGE DRESSED WEIGHTS WERE 11 POUNDS HEAVIER THAN LAST YEAR.

LAMB PRICES IN VIRGINIA WERE \$2.00-2.50 LOWER AS MIDWEST PRICES WERE STEADY TO \$2.00 LOWER. LAMB SLAUGHTER WAS 8 PERCENT BELOW A WEEK AGO AND 8 PERCENT BELOW A YEAR AGO. AVERAGE DRESSED WEIGHTS WERE

THE SAME AS LAST YEAR. SLAUGHTER HOGS IN VIRGINIA WERE \$1.00 LOWER TO \$1.75 HIGHER. SOUTHEAST VIRGINIA HOG MARKET WERE STEADY TO 50 CENT HIGHER. MIDWEST HOGS WERE \$1.00-2.00 HIGHER. FRESH PORK PRICES WERE \$3.75-7.25 HIGHER EXCEPT LOINS WHICH WERE \$2.50 LOWER. PORK PRODUCTION WAS 3 PERCENT ABOVE A WEEK AGO BUT 14 PERCENT ABOVE A YEAR AGO. AVERAGE DRESSED WEIGHTS WERE 1 POUND LIGHTER THAN LAST YEAR.

THE RICHMOND HOG MARKET CLOSED NO TREND REPORTED DUE TO NO REPORT LAST WEEK. BARROWS AND GILTS US 1-4 200-240 LBS TUESDAY WERE \$39.00-40.00 PER CWT.

THE SOUTHEAST VIRGINIA HOG MARKET CLOSED STEADY TO 50

CENT HIGHER THAN LAST WEDNESDAY WITH BARROWS AND GILTS, US 1-4 200-240 LBS \$39.50-41.50 PER CWT. AT HARRISONBUR, LYNCHBURG, & TAPPAHANNOCK HOG PRICES WERE STEADY COMPARED TO LAST WEDNESDAY AT \$38.00-41.00, SOWS RANGED \$28.00-30.00 AND BOARS \$20.00 PER CWT.

SLAUGHTER STEERS AND HEIFERS 0% SLAUGHTER COWS 11%, SLAUGHTER BULLS 1%, SLAUGHTER CALVES AND VEALERS 1%, FEEDER CATTLE UNDER 600 LBS 73%, OVER 600 LBS 14%.

PRICE RANGES FOR VIRGINIA WEEKLY AUCTIONS:

SLAUGHTER CATTLE STEERS; NO PRICES REPORTED THIS WEEK HEIFERS; NO PRICES REPORTED THIS WEEK UTILITY & COMMERCIAL COWS 37.50-49.25 BULLS; 1-2 900-1300 LBS 50.00-63.00 1-2 1300-1600 LBS 48.50-59.50 1-2 1600 LBS & OVER 53.00-63.75 SLAUGHTER CALVES AND VEALERS VEALERS - HIGH CHOICE AND PRIME 100-250 LBS 82.00-91.00 GOOD AND CHOICE 100-250 LBS 79.00-81.00 CALVES - GOOD AND CHOICE 250-500 LBS 75.00-81.00 FEW 65.00 SLAUGHTER LAMBS HIGH CHOICE & PRIME 95-125 LBS 54.00-57.50; BUCKS 48.50 SLAUGHTER HOGS US 2-4 200-250 LBS 38.00-41.75 SOWS US 1-3 300-500 LBS 25.00-37.00; 500 LBS & OVER 28.00-33.00 FEEDER CATTLE STEERS; MEDIUM 1 200-300 LBS 97.00-110.00 300-400 85.00-101.00 400-500 88.00-101.50 500-600 75.00-89.00 600-700 75.00-88.00 700-800 72.00-82.00 800-900 63.75-75.50.

HEIFERS; MEDIUM 1 300-400 LBS 76.00-88.00 400-500 70.00-87.50 500-600 68.00-81.00 600-700 65.00-76.00 700-800 62.00-73.00 800-900 61.00-75.00.

Richmond Va  
Fed State

Northern Virginia Area  
(Fauquier) And Staunton Union, Virginia

Sept. 27, 1988

ALL TRENDS COMPARED TO LAST TUESDAY

SLAUGHTER HOGS 85 HEAD - BARROWS AND GILTS 1.00 HIGHER  
SLAUGHTER SOWS 2.00 HIGHER  
BARROWS AND GILTS US 2-4 200-250 LBS 39.25-41.75 3-4 250-300 LBS 33.50 2-4 180-200 LBS 38.25 SOWS US 1-3 300-500 LBS 29.00-32.00 500 LBS & OVER 31.00-33.00 BOARS 24.00-26.00  
SLAUGHTER CATTLE 120 HEAD - SLAUGHTER COWS AND SLAUGHTER BULLS STEADY.

TER BULLS STEADY.

SLAUGHTER COWS 94 HEAD CUTTER & BNG.UT. 1-3 39.00-47.00 BRKG.UT. & COMM. 2-4 38.00-47.50 CANNER & LOW CUTTER 1-2 36.00-41.00

SLAUGHTER BULLS 16 HEAD; 1-2 900-1300 LBS --- 1-2 1300-1600 LBS 53.00-58.00 1-2 1600 LBS & OVER 56.00-58.50

SLAUGHTER CALVES AND VEALERS 10 HEAD CALVES - GOOD AND CHOICE 250-500 LBS 75.00-86.00 LAMBS 99 HEAD - SLAUGHTER LAMBS STEADY. HIGH CHOICE AND PRIME 95-125 LBS 55.00 CHOICE 85-125 LBS 59.75 FEEDER LAMBS CHOICE AND FANCY 70-85 LBS 65.00; 60-70 LBS 66.00 SLAUGHTER EWES ALL GRADES 13.00-21.00

FEEDER CATTLE 330 HEAD - NO TRENDS REPORTED. STEERS, MEDIUM 1 300-400 90.00-107.00 400-500 80.00-86.00 500-600 75.00-80.00 600-700 75.00-79.00 HOLSTEIN STEERS; MED.&LARGE 1-2 500-700 LBS 68.00-73.00

HEIFERS; MEDIUM 1 300-400 74.00-79.00 400-500 70.00-78.00 500-600 65.00-73.00 FEEDER BULLS; MEDIUM 1 300-500 LBS 85.00-103.00 500-700 LBS 70.00-75.00 700-900 LBS 55.00-59.00 BABY CALVES RETURNED TO FARMS 25 HEAD NEWBORN TO 4 WK OLD 30.00-116.00 PER HEAD. OVER 100 LBS 80.00-126.00 PER CWT.

STATE GRADED FEEDER CATTLE 626 HEAD SOLD AT MARSHALL (FAUQUIER)  
STEERS; MED.&LARGE 1 MED.&LARGE 2 300-400 96.00-102.00 --- 400-500 92.00-94.25 --- 500-600 80.00-95.00 80.00 600-700 81.00-85.25 81.25 700-800 75.00-80.25 75.50 800-900 72.25-78.50 71.00 900-1000 69.00-74.75 ---

HEIFERS; MED.&LARGE 1 MED.&LARGE 2 300-400 80.00-82.00 --- 400-500 77.00-81.25 73.50 500-600 77.75-80.00 73.75 600-700 73.00-76.25 65.00 700-800 70.00-73.00

Peoria Sheep

Peoria, Illinois

Tuesday, September 27, 1988  
SHEEP: 200 TRADING MODERATE. COMPARED WITH LAST TUESDAY SLAUGHTER LAMBS 1.00 TO 2.00 LOWER NOT ENOUGH SLAUGHTER EWES FOR A MARKET TEST  
SPRING SLAUGHTER LAMBS: CHOICE AND PRIME 95-120 LBS. 55.00-57.00, FEW 58.00

## MARKET YOUR FORMULA FED CALVES

WITH AREA PACKER

We allow our valued growers to weigh their own calves.

Domenic Venuto, Inc.

622 Federal Street  
Philadelphia, PA 19147

215-339-9921  
or 215-467-9614  
or 215-389-VEAL

## CRIPPLED AND DISABLED

Cows, Steers & Bulls  
For Slaughter Under  
USDA Inspection

Call Wayne Taylor

717-866-6289  
215-286-9400

Lebanon, Berks,  
Lancaster & Chester  
Counties



## ATTENTION FARMERS

EVERY MONDAY  
HATFIELD PACKING CO. and  
MOYER PACKING CO.

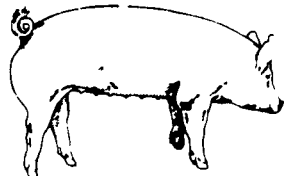
Will Receive Your  
Hogs and Cattle at the  
DANVILLE LIVESTOCK MARKET

RD 4, Danville, PA

- We will receive your hogs from 8 AM to 12 Noon every Monday. Your hogs will be weighed and paid for immediately.
- We will also accept your sows & boars
- Your cattle will be received from 12:30 to 5 P.M. We will either pay you for your cattle immediately or you may sell them dressed weight
- There will not be a commission or yardage fee deducted from your check.
- You may call our office Monday morning and we will be able to tell you the base price for hogs for the day.

MELVIN M. LEHMAN - Owner  
Danville Buying Station

Phone: 717-275-2880



EMERY'S  
BUYING  
STATION

OPEN TO RECEIVE  
YOUR MARKET HOGS

AT THE GREEN DRAGON MARKET  
RD 4, EPHRATA, PA 17522  
1 MILE NORTH OF EPHRATA  
ON NORTH STATE STREET.

HOURS: MONDAY, TUESDAY, and  
WEDNESDAY 7:00 A.M. to 11:30 A.M.

215-458-5677 Residence  
717-733-9648 Office

YOU ARE PAID FOR YOUR  
HOGS IMMEDIATELY

Ken & Lois Emery, Proprietors

## SWINE PRODUCTION SALES AND SERVICE

Feeding Programs  
And Services To  
Meet Your Individual  
Needs

Computerized  
Record Keeping  
System

Contracts  
Available



Supplying Farm Fresh  
Feeder Pigs

Marketing and Hedging  
Services

Marketing of Genesis  
Breeding Stock

Developing Individual  
Financial Programs

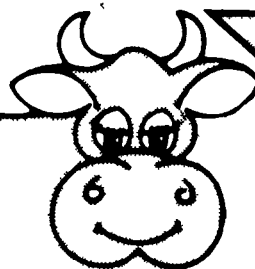
Quality Products And Services - Working For YOU

419 West High Street  
Elizabethtown, PA 17022

Elizabethtown  
(717) 367-1525

PA Toll Free  
1-800-468-5524

Shippensburg  
(717) 532-7845



## DAIRY BEDDING

- Wood Shavings & Sawdust Mix
- Reasonably Priced
- Continuous Year Round Supply
- Delivered To Your Farm By Trailer

CALL FOR PRICE

MARTIN  
GRAIN

84 East Main St.  
Mount Joy, PA

717-653-1085