



**1974 GMC**  
366 Engine, 60,000 miles, 5 & 2, 18 ft. cattle bed, 1 owner, \$4,500  
**301-898-7426**



**1983 GMC Single Axle Tractor**, 99,000 original miles, A/C, P/S, 240 HP Cummins, 9 spd., 11R24.5 on steel Budds, new PA inspection, \$16,500

Lancaster County  
**717-859-3168**

**35 TRUCKS & TRAILERS**

'87 Dodge D250 3/4 ton, 318 auto, PB, PS, 7,500 GVW, Michelin radials, 11,000 miles, like new, \$9,600 717-733-2873

'88 Chevy Cheyenne 2500, 3/4 ton, 305 auto., PS, PB, 7,200 GVW, new w/factory warranty, blue & white, \$10,600. 717-733-2873

8'Hx16'L truck box. 215-267-6198 after 6PM

C&C 81 Chevy C30, 350, 4-speed, good condition, 717-423-6332.

Chevy 75 C20 Scottsdale pickup, 4x4, 350, automatic, PS, PB, nice shape 717-665-5739.

2-Brand new 1988 Chevy truck boxes, never used; 1-1987 Ford box, good shape. 717-222-9020.

'79 Mack Valuliner, 300+ engine, wetline, mechanically good shape. 215-857-5754.

'79 Chevy C20 3/4 ton, 350 4 spd., PS, PB, AM-FM, \$1,475. 717-733-2873

'81 Chevy custom deluxe 10 pickup, 78,000 miles. Phone 717-532-8136.

- 5x8 Car Mate.....\$350
- 6x14 Construction 8,000 GVW.....\$1000
- 6x16 Construction, tilt bed, 8000 GVW.....\$2000
- 8x20 Gooseneck, 2 axle, 12,000 GVW.....\$3,500
- 8x24 Gooseneck, 3 axle, 18000 GVW.....\$4,000

**Ringo Hill Farms**  
Pleasant Valley, Rt. 212  
Quakertown, PA 18951  
**215-346-7340**

**YES!! ENGLE FORD DOES MAKE IT EASIER!!**

Over 100 New & Used Trucks, Vans & 4x4's

- (3) 1988 Ford Customized Vans 302 V8, AOD, Air Conditioning
- 87 Ford F350 Crew Cab, DRW, 4x4, Centurion Conversion
- 86 Ford F350 15 Pass van, V8, AT, PS, PB, AC, Much More, 1 Owner
- 86 Ford F150 4x4 6 cyl, 4 spd, PS, PB, step side only 24,000 miles.
- 85 Ford Bronco II V6, 5 Spd, PB, PS, AC, Eddie Bauer Edition, 1 Owner.
- 85 Chev Blazer 4x4, V8, AT, PS, PB, AC, Choo Choo Conversion, Very Unique.
- 85 Ford F150 4x4, 6 cyl, 4 spd., PS, PB explorer pkg, sharp, 2 tone blue.
- 84 Ford F150 4x4, 302, 4 spd.
- 78 Ford LN8000, Cab & Chassis, 3208 Dsl., 5 Spd., 2 Spd. Axle, Low Miles

**ENGLE FORD, INC.**

Rt. 147 North  
Millersburg, PA 17061  
In PA The Call's On Us 1-800-242-8075  
Out of State Call 1-717-692-4841



**Lime Spreader Truck**

'73 Mack and '78 Hill Air Slide Trailer. Truck has 50,000 on overhaul. Adams Co.

**717-624-4724**

**FISHER'S TRAILER SALES**

MONARCH BISON CUSTOM FAB  
EL PASO PONDEROSA  
1988's AT REDUCED PRICES

- HORSE-**
  - 2 Horse TB deluxe dk rd.....\$3575 NOW \$3375
  - 4-Horse TB stock w/tack space grey\$3350 NOW \$3150
  - 12 ft. GN w/removeable T divider grey\$3600 NOW \$3700
- STOCK -**
  - 10 ft. Bumper 7 ft. high, breast bar red\$2475 NOW \$2375
  - 12 ft. Bumper dk red.....\$2200 NOW \$2100
  - 14 ft. Bumper w/center gate grey, red\$2900 NOW \$2200
  - 16 ft. Bumper w/center gate grey, red, blue.....\$2400 NOW \$2300
  - 16 ft. Bumper w/center gate black.\$2850 NOW \$2750
  - 16 ft. Bumper w/center gate red.....\$2600 NOW \$2500
  - 16 ft. GN 7 ft. wide 7 ft high brn ..\$4500 NOW \$4300
- UTILITY -** 16 ft. Bumper w/rail, ramps 4 wheel brakes.....\$1330 NOW \$1230
- SPECIAL -** 16 ft. GN 7 ft. wide '89 dressing room, Dk Blue rear tack, slant load, lined, pads, mats \$6000
- USED -** 2-Horse, 4-Horse, 7x20 Goosenecks, 16 ft. stock, 17 ft. stock w/tack space \$700 and up

(717) 242-0941  
RD #2 McVeytown, PA 17051

Rt 22 5 mi west of  
Lewistown,  
Pa. 17051

Mark VII - Pickups - Broncos - Bronco II - Stake Body - Crew Cab -

**SHEEHY FORD LINCOLN MERCURY INC.**

For All Your Farming Transportation Needs Through The F800 Series

BRONCOS DIESEL PICKUPS CHASSIS CAB CARGO VANS 4x4 RANGERS PICKUPS  
BRONCO II SUPER CAB CREW CAB STAKE BODY BOX VANS XLT CUSTOM VANS

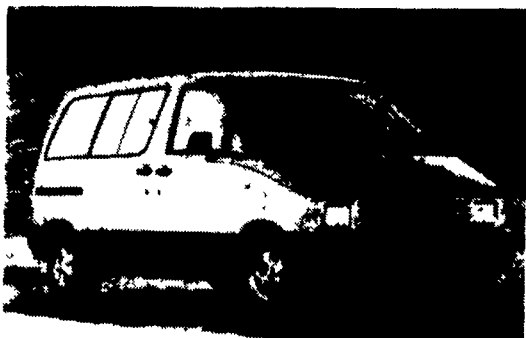
**SHEEHY HOTLINE 717-272-7671**

Unless This Emblem Is On Your Car Or Truck You Probably Paid Too Much

Parts Dept. Open  
Daily 8-5  
Sat. 8-12  
717-273-8168

**SHEEHY LEBANON**

20th & Cumberland St. - Lebanon



1988 Ford Aerostar

**Close Out Sale  
On All Cars And  
Trucks Now Until  
October 6th**

**Rebates Up To  
\$500 On  
Aerostar**

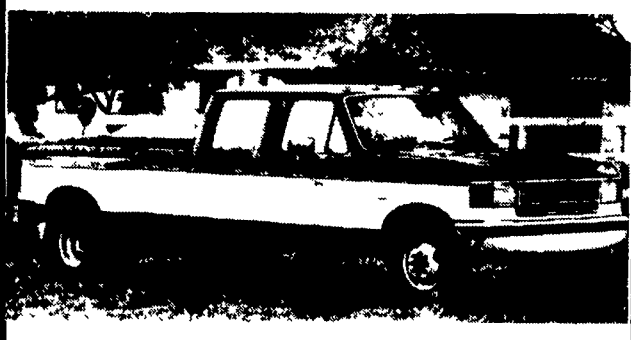
**Financing On  
Selected Cars  
Starting 's Low  
As 3.9% For  
24 Months**



1988 Ford Econoline Van



4 WD Pickups In Stock



1988 Ford Crew Cab

Tempo - Cougar - Continental - Town Car - 4x4 - Box Van - Rangers -

Custom Vans - XLT - Grand Marquis - Marquis -

Lynx - Topaz - Diesel Pickups - Mustang - T Bird