

Milking Shorthorn

(Continued from Page A22)

The three-year old is an Elwood S V Promise daughter. She has a 364-day record of 16,270 pound of milk and 494 pounds of butterfat.

Pinesedge Alfair Carleen, no stranger to championship titles, was selected as the reserve grand champion Milking Shorthorn. The Excellent-rated, aged cow is owned by Pinesedge Farm of Shoemakersville, Pa. She is an 11-year-old Pinesedge Rhythm daughter out of Pinesedge Dar Carleen. Among her wins include several grand champion honors at the Pennsylvania Farm Show, the 1983 grand champion at the World Dairy Expo and several grand championships at the Pennsylvania All American.

The junior champion female was the senior heifer calf shown by Trudy York of Sandy River Farms in Farmington, Me. The November '87 heifer is a Class Reunion daughter out of Sandy River Martha.

Taking the reserve junior champion spot was the second-place senior heifer calf. A 9-23-87 Wilwood Mr. Madison daughter out of Ritchie's Royal Vashti 2, the heifer is owned by Scott A. Ritchie of Muncie, Ind.

A partial list of the placings follows.

MILKING SHORTHORN

- Junior Heifer Calf**
1. Lattire's Twilight Farm, 2. Whirlwind Farm, 3. Prospect Valley Farm
- Intermediate Heifer Calf**
1. Pinehurst Farm, 2. Spring Meadows Farm, 3. William Vishere
- Senior Heifer Calf**
1. Sandy River Farms, 2. Scott A. Ritchie, 3. Thomas Landrum
- Summer Yearling Heifer**
1. Huck's Hidden Acres, 2. Three Springs Farm, 3. Whirlwind Farm
- Junior Yearling Heifer**
1. Sandy River Farms, 2. Voter Hill Farm, 3. Nathan & Chris Staib
- Senior Yearling Heifer**
1. William Vishere, 2. Three Springs Farm, 3. Sandy River Farms
- Champion Junior Heifer**
Sandy River Farms
- Reserve Junior Champion Heifer**
Scott A. Ritchie
- Best Junior Bred & Owned**
1. Sandy River Farms, 2. Scott A. Ritchie, 3. Twilight Farm
- Junior Best Three Females**
1. Sandy River Farms, 2. Walnut Hollow Farm, 3. Three Springs Farm
- Dry Cow, 3-4 Years**
1. Tres Colles Farm, 2. Three Springs Farm, 3. Sandy River Farms
- Dry Cow, 5+ Years**
1. Pinehurst Farm, 2. Kuszmar Farm, 3. Pinesedge Farm
- Junior 2 Year Old**
1. GMC Farm, 2. Spring Meadows Farm, 3. Pinesedge Farm
- Best Udder**
1. GMC Farm, 2. Spring Meadow Farm, 3. Michael & Karen Bodey
- Senior 2 Year Old**
1. GMC Farm, 2. Pinehurst Farm & Weidner Prairie Farm, 3. Sandy River Farms
- Best Udder**
1. GMC Farm, 2. Pinehurst Farm, 3. GMC Farm
- 3 Year Old**
1. Pinehurst Farm, Weidner Prairie Farm, & Oakgrove Farm, 2. James H. Young, 3. GMC Farm
- Best Udder**
1. Pinehurst Farm, Weidner Prairie Farm & Oakgrove Farm, 2. James H. Young, 3. GMC Farm

- 4 Year Old**
1. Pinehurst Farm & Weidner Prairie Farm, 2. Pinesedge Farm, 3. GMC Farm
- Best Udder**
1. Pinehurst Farm & Weidner Prairie Farm, 2. Pinesedge Farm, 3. GMC Farm
- 5+ Years**
1. Pinesedge Farm, 2. Pinesedge Farm, 3. Pinesedge Farm
- Best Udder**
1. Pinesedge Farm, 2. Pinesedge Farm, 3. Pinesedge Farm
- Senior Champion**
Pinehurst Farm, Weidner Prairie Farm, & Oakgrove Farm
- Reserve Senior Champion**
Pinesedge Farm

Lancaster Farming, Saturday, October 1, 1988-A23

- Best Senior Bred & Owned**
Pinesedge Farm
- Grand Champion**
Pinehurst Farm, Weidner Prairie Farm, & Oakgrove Farm
- Reserve Grand Champion**
Pinesedge Farm
- Best Three Females**
1. Pinesedge Farm, 2. Sandy River Farms, 3. Three Springs Farm
- Get Of Sire**
1. GMC Farm, 2. Sandy River Farms, 3. Cold Springs Farm
- Dairy Herd**
1. Pinehurst Farm & Weidner Prairie Farm, 2. Pinesedge Farm, 3. GMC Farm

- Produce of Dam**
1. GMC Farm, 2. Kuszmar Farm, 3. Pinesedge Farm
- Dam-Daughter**
1. Pinesedge Farm, 2. GMC Farm, 3. Sandy River Farms
- State Herd**
1. Pennsylvania, 2. Indiana, 3. Massachusetts
- Premier Breeder**
Pinesedge Farm
- Premier Exhibitor**
Pinesedge Farm
- Premier Sire**
Elwood S V Promise

PROTECT YOUR INVESTMENT



Take The Guesswork Out Of Heifer Rations

Young's Herd Replacement program works because it provides proper nutrition from birth to breeding to milking.

A key ingredient in our nutrition package is **Heifer-Gro™ B** (a mineral/vitamin premix with BOVATEC®).

WHY INCLUDE HEIFER-GRO B IN YOUR HERD REPLACEMENT NUTRITION PROGRAM?

- Because it contains all the minerals and vitamins needed by fast growing calves.
- Bovatec (lasalocid) improves growth rate in dairy replacement heifers of all ages and weights and fed all kinds of diets.
- Breeding maturity (puberty) is influenced more by body weight than by age.
- Reaching breeding weight earlier enables dairy replacement heifers to be bred earlier and enter the milk line sooner.
- Bovatec is the only feed additive approved to:
 - Control coccidiosis
 - Improve growth rate from the day the calf is born.

Your Young's representative has all the details. If you don't know the name of the sales representative in your area, contact . . .



Livestock Nutritional Services

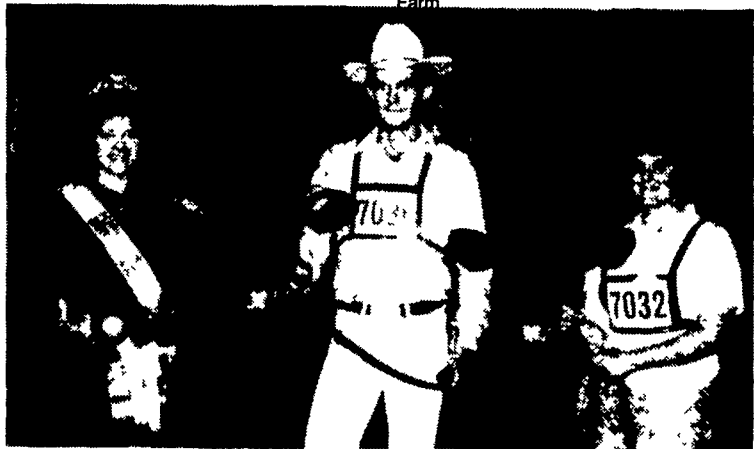
P.O. Box 71, Roaring Spring, PA 16673

Phone: 814-793-3701

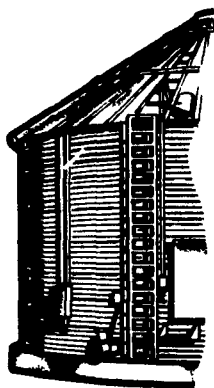
• QUALITY • SERVICE • FLEXIBILITY

1988 Young's

• Bovatec is Hoffman-LaRoche's Trademark for lasalocid

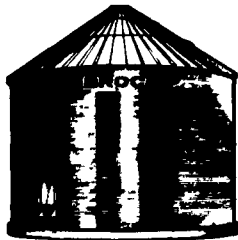


The senior heifer calf shown by Trudy York, right, of Sandy River Farms in Maine, was the junior champion Milking Shorthorn. Danny Huddleston held the reserve junior champion, the second-place senior calf owned by Scott A. Ritchie of Indiana. At left is state dairy princess, Kim Bonzo.



IT MAY BE CHEAPER BUT IS IT BETTER?

Buying grain storage on price alone can be quite dangerous. Some other brands of grain bins quote a low price and achieve it by selling you only part of a bin. BROCK offers you a **complete** grain bin at an honest price and includes the needed components that help the bin last longer, protect your stored grain right, and yield the best returns as your No. 1 grain marketing tool. Feature for feature, you get more for your money and more crop security with BROCK. So why settle for only half a bin?



BROCK BINS
MAKE BROCK YOUR FIRST CHOICE

If You Are Considering A Feed Processing System, GIVE US A CALL... We Are Your Complete Feed Processing/Grain Systems Company

Conestoga Agri Systems

Consultation, Sales and Service
Grain Drying & Storage - Feed Conveying & Processing

215-D West Main St (717) 656-0140 Leola, PA 17540

