

# OPEN

**41'x171' TOTAL SLAT HO**

**WEDNESDAY, OC**

**2 PM -**

**Congratulations To**

**Jim, Joann, Ja**

**East Ber**

-  **Concrete Slats**

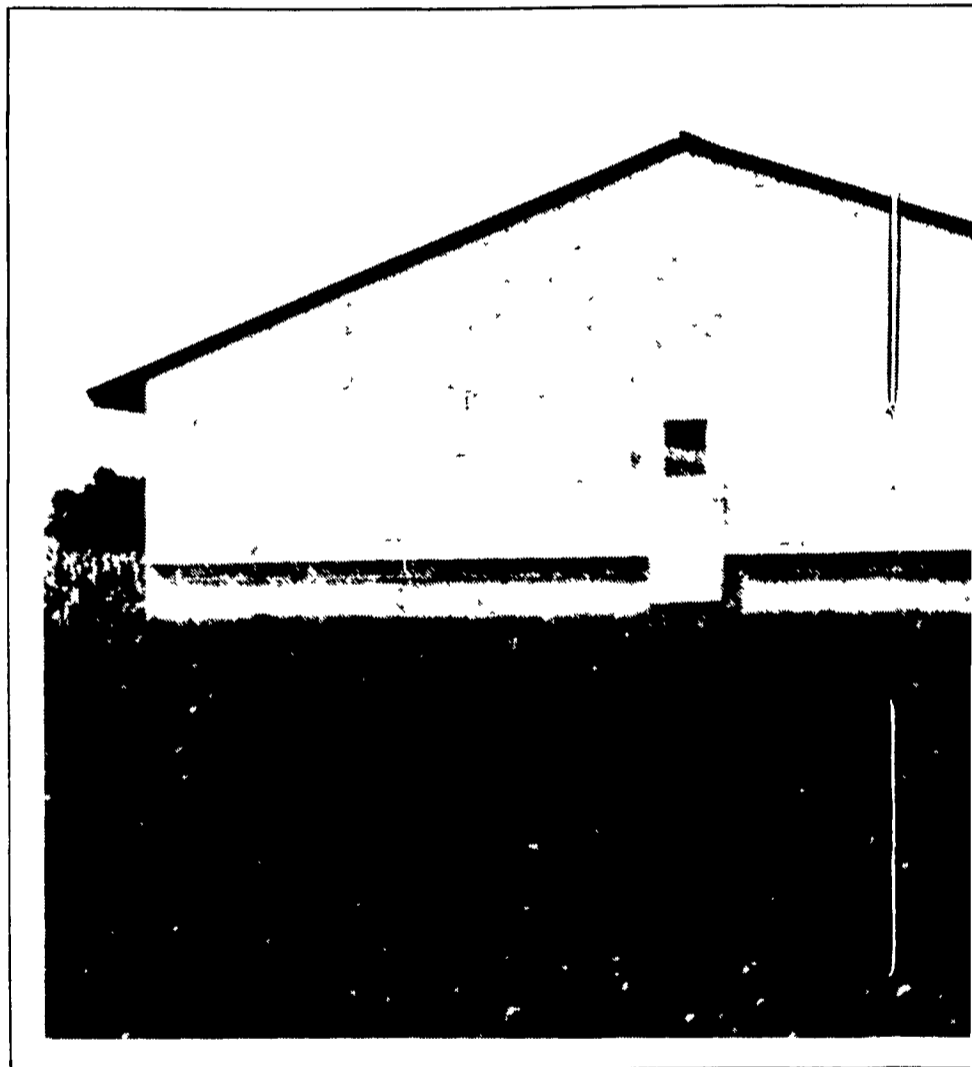
-  **Waterers and Sprinkler System**

-  **AAA® Corrosion Resistant Exhaust Fans**

- **CAMBRIDGE Heaters**

-  **Stainless Steel Feeders**

- **Solid Steel Rod Fencing**



**Typical 1000 Head**

*Designed And Equipped By*

**TRI-COUNTY**

CONFINEMENT SYSTEMS INC.

608 E. EVERGREEN RD.  
LEBANON, PA 17042  
(717) 274-3488



**SWINE, POULTRY AND LIVESTOCK BUILDINGS AND EQUIPMENT**

**THE PEOPLES STATE BANK**

