

Public Auction Register

Closing Date Monday 5:00 P.M.
of each week's publication

OCTOBER

SAT. SEPT. 24 & SAT. OCT. 1 - 9AM Both Days. Real Estate, Antiques, HH, etc. Along West Main Street, Schaefferstown, Leb. Co., PA. Mary Strickler, Owner. Weik & Weik, Aucts

SAT. OCT. 1 - Located along Rt. 23, midway between New Holland & Bareville. Will be selling real estate, antiques & household goods. Harry Z. Wenger, Owner. Nevin Z. Martin & Andrew M. Martin, Aucts.

SAT. OCT. 1 - 86 Acres Located 3 mis. E. of Elizabethtown off E-town Road on corner of Bellaire Rd. & Country Squire Road, Mt. Joy Twp., Lanc. Co., PA. For. Paul & Parthene Hess. Rufus Geib, Auct.

SAT. OCT. 1 - 8:30AM Tools, Machinery, Trucks, Lumber, HH, Collectibles, Guns George H. Long, 1 mi. off New Berlin to Middleburg Hwy., Snyder Co., PA. Earl W. Eash & Ken Smith, Auct.

SAT. OCT. 1 - 3 Tractors, Comm. Winco Generator, Mushroom Eq., New & Used HH, Furniture, Tools. 1/2 mi. off old Rt. 1, on Twin House & Oak Rds. E. Nott Twp., Oxford, PA. John G. Morrison. Whiteside Auct. Serv.

SAT. OCT. 1 - 8AM Real Estate, Farm Machinery, Horse Drawn Eq., Antiques Red Lion, PA, take Rt. 74S approx. 6 1/2 mis. to Cannery Rd. turn left approx. 1.3 mis. to sale, follow signs OR from Normanwood Bridge proceed N. on Rt. 74, just past Brogue post office turn rt. on Cannery Rd. Estate of Amoss H. Lieberknecht. Melvin Haines & Ralph Brennehan, Aucts.

SAT. OCT. 1 - 8:30AM Power Tools, Machinist Tools, Guns, Knives, etc Newberrytown Fire House, Newberrytown, PA. I-83 N or S. use Newberrytown Exit 13. From Harrisburg, PA, turn left on Rt 382 Mrs. Jestina Brehm Owner Little IKE Eichelberger, Auct.

SAT OCT. 1 - 9AM Ford 8N Tractor, Mower, JD Plow 2B, Butcher Eq., Tools, HH For Mr. & Mrs. Gilbert Birkenbine 2 mis. N. of Strausstown. Berks Co. Just off Rt 183. Dwight D Miller, Auct.

SAT. OCT. 1 - 9AM Atglen Stone Rancher, Antiques Corner of Fruitville Pike & Temperance Hill Road (Rt 772), Penn Twp., Lanc Co., PA. By: Mary B Metzler HORST Aucts

SAT. OCT. 1 - 9AM Juniata Mennonite School 12th Annual Benefit Auction, McAlisterville Community Park, Juniata Co., PA

Long's Auct. Serv.

SAT. OCT. 1 - 9AM Excavating Eq., Farm Eq 13

mis. N. of US Rt. 22 past ABE Airport at Shoenersville Rd. turn west, go .8 mi., then right onto Hanover St. for .9 mi. to Colony Dr., turn right to 2nd house on left. Northampton Co., PA. For: Elmer & Rachael Hunsicker. Ralph W. Zettlemoyer Auct. Co. Inc.

SAT. OCT. 1 - 9:30AM Antiques, Personal Property,

Automobile. Springetts Fire Co. Social Hall, 3013 E. Mkt. Street, York, PA. Brian L. & Jacob A. Gilbert, Aucts.

SAT. OCT. 1 - 9:30AM 114 Acre Farm. Montgomery Twp., Franklin Co., PA, 11335 Shipmstown Rd., Mercersburg, PA. 3 mis. S. of Mercersburg off Rt. 75 Wm. & Joshana Fisher, Owners J. Robert Meyers,

Auct.

SAT. OCT. 1 - 9:30AM Consignment Auction at Ryan Meat Processing, 1509 Ryan Rd., Fallston, MD. John A. Ryan, Auct.

SAT. OCT. 1 - 9:30AM 235 Jackson St., Port Carbon, Sch. Co Boat, Plumbing & Electrical By: Joseph Yourshaw. Schultz Auct Serv.

PUBLIC SALE FRIDAY, OCTOBER 14, 1988

1:00 P.M.

Location: From Newville Light Take Route 233 North 5 1/2 Miles To Route 997 Go 1 1/2 Miles To Property On Right, Lower Mifflin Twp., Cumberland Co. Penna.

4 ACRE FARMETTE, WITH POND

1 1/2 Story Frame And Aluminum House, Living Room, Kitchen And Dining Area, Four Bedrooms, Bath, Laundry and Storage Rooms.

Concrete Block Barn 30'x48' With Loft. Four Box Stalls, Shop With Chimney.

Chicken House 36'x300' Metal Roof, Aluminum And Fiberglass Siding, Manure Pit, Stoltzfus 20 Ton Grain Bin, Packing Area, Cooling room.

Also: 12'x60' Mobile Home With Enclosed Porch And Partial Basement. Well, Two Septic Systems.

Immediate Possession
10% Down- Balance In 30 Days
Sale 1:00 P.M.

**ELAM S. &
FLORENCE G. FISHER,**
Owners

Diffenbach's Auct. 225L
717-393-4464

Wheeler Complete Dispersal

Plus 25 Fresh & Close Cows
& 1st Calf Hftrs.

Sale will be held at the Gordon Wood Sale Barn off Rt. 15- 1 mile north of Tioga. Watch for auction arrows.

FRIDAY, OCT. 14
AT 1:00 SHARP

74-REG. & HIGH GRADE
HOLSTEINS-74

Approx. 50 Reg.- 24 High Grades
Wheeler herd consist of 37 mature cows, 5 bred or breeding age hftrs., 17 from started calves to 6 mos. plus 25 fresh or close springer cows & first calf hftrs. Watch for features & details next week.

MACHINERY

JD 3020 diesel tractor w/canopy; Gehl #117 spreader w/tail gate (new in Feb.); Nickover 16' gooseneck trailer; 2 round bale feeders.

Terms- Cash or Good Check
Sale Under Cover Lunch Available

Owners On 59 Head
JOHN III & JENNIFER WHEELER

Sales Mgr.- Gordon Wood-
Mansfield, Pa.- Ph. 717-549-4901

For The Most In Advertising
Coverage And Preparing Your Sale.
Call Wood's Auction Service

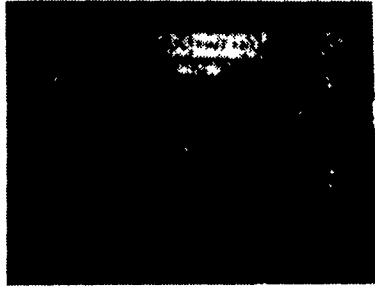
Announcing the BLUE CHIP CLASSIC Club Calf Sale Friday, October 14, 1988 7:00 p.m.

FAYETTE COUNTY FAIRGROUNDS
4 miles South of Connellsville, PA — 6 miles North of Uniontown, PA
Along Route 119 near Connellsville Airport

45 STEER CALVES

April and May calves, mostly Chianina Crosses Out of Power Play, Ildeno or Sugar Ray

BLUE CHIP STEERS CONTINUES WINNING TRADITION



Grand Champion
1988 Fayette Co Fair



Champion Middleweight
1987 PA Farm Show

- 1988 WINNERS**
- Division Champion Northwest Keystone Classic
 - Reserve Grand Champion Fayette Co Jackpot Show
 - Grand Champion Fayette Co Fair
 - Reserve Grand Champion Fayette Co Fair
 - Grand Champion Fayette Co Fair Open Show
 - Reserve Champion Fayette Co Fair Open Show
 - Grand Champion Bedford Co Fair
 - Grand Champion Washington Co Fair
 - Reserve Grand Champion Washington Co Fair
 - Reserve Division Champion Somerset Co Fair
 - Grand Champion Westmoreland Co Fair
 - Reserve Grand Champion Westmoreland Co Fair
 - Lightweight Champion Indiana Co Fair
 - 2 Class Winners Maryland State Fair
 - Reserve Champion Crossbreed
- Plus Division and Class Winners too numerous to mention



Grand Champion — Bedford Co Fair
Reserve Champion — Fayette Co Jackpot Show



Grand Champion
1987 Northwest Keystone Classic

- 1987 WINNERS**
- Grand Champion Lightweight PA Farm Show
 - Grand Champion Middleweight PA Farm Show
 - Grand Champion Northwest Keystone Classic
 - Grand Champion Fayette Co Jackpot Show
 - Reserve Champion Fayette Co Jackpot Show

- 1987 WINNERS**
- Grand Champion Washington Co Jackpot Show
 - Grand Champion Somerset Co Jackpot Show
 - Reserve Champion Somerset Co Jackpot Show
 - Grand Champion Fayette Co Fair
 - Grand Champion Fayette Co Fair Open Show

- 1987 WINNERS**
- Reserve Champion Fayette Co Fair Open Show
 - Grand Champion Washington Co Fair
 - Grand Champion Westmoreland Co Fair
 - Reserve Champion Somerset Co Fair
 - Class Winners at Eastern National

For More Information Contact:

DONALD WITT — 412-455-2488 JEFF LOCKE — 513-828-1487 JIM WORK — 304-599-5048



PUBLIC AUCTION

OF VALUABLE 12-ACRE FARMETTE
HOUSEHOLD GOODS, ANTIQUES
FARM EQUIPMENT, 3/4 TON TRUCK
WINROSS TRUCKS

SAT., OCT. 8, 1988

SALE AT 9:30 A.M.
REAL ESTATE AT 1 P.M.

Located 1 1/2 miles N. of Rt. 340, turn off in Bird-In-Hand on Beechdale Rd. 5 mi. S. of Rt. 23 turn off on Horseshoe Rd. on corner of Beechdale & Gibbons Rd., Upper Leacock Twp., Lanc. Co., PA.



2 1/2 STORY FRAME DWELLING

w/vinyl siding, aluminum soffit, windows capped, new roof, one-car garage attached.

Large eat-in kitchen w/built-in cabinets, laundry, pantry, 1/2 bath, enclosed porch, large living room w/wall-to-wall carpet, open stairway, family room, full bath on first floor.

Five rooms on 2nd floor, full basement w/arch cellar, oil fired hot water heat w/summer & winter hookup, cast-iron radiators, 100 Amp. service.

Frame Bank Barn-room for 3 acres of tobacco w/stripping room & dampening cellar, horse stalls & box stalls, 2 over-head garage doors, 18 ton wire corn crib.

Open for inspection Sat., Sept. 17 & 24 from 2 till 4 P.M. or for appointment call 656-7948. 10% down day of sale, balance on or before Dec. 9, 1988.

HOUSEHOLD GOODS: Oak Extension Table w/8 Boards; Fiddleback Chair; 5-Pc. Veneered Bedroom Suite; Spring & Mattress; Washstand; Oak China Closet w/Bowed Glass; Old Oak School Clock; Oak Washstand; Cherry Writing Table; Dovetailed Blanket Chest; Oak Armchair; Granny Arrow-Back Rocker; Library Table; Wooden Clothes Trees; Old Hat Rack; Old Drop Leaf Table; Bureau; Washstand; Chest of Drawers; 4 Pc. Modern Bedroom Suite; Box Spring & Mattress; 3-Pc. Living Room Suite; Wood & Metal Wardrobe; Center Table; Highchair; Recliner Chair; Kneehole Desk; Drop Leaf Coffee Table; End Table; Daybed; Iron Bed; Cedar Chest; Beveled Plated Mirror; Old Pictures; Frames; Floor & Table Lamps; Seth Thomas Mantel Clock; Old Light Shades; Crib; Folding Chairs; Rugs; Throw Rugs; Wicker Settee; Porch Furniture; Fernery; Appliances.

Hotpoint Refrigerator w/Freezer Top, Kelvinator Elec. Stove, Norge Chest Type Freezer, 10 Cu. Ft. Maytag Round Tub Wringer Washer, Sewmor Treadle Sewing Machine, Fan on Stand, GE Canister Vacuum; Small Appliances; Linens; Old Quilt; Old Lap Robe.

GLASSWARE: Dinner Set for 12 Rose China, Japan; Sets of Salts; Depression; Press; Pink Glass; Peanut Butter Glasses; Sherbets; Egg Plate; Old Tureen; Relish Dish; Bavarian & German Fruit Dishes; Earthen Bowls; Souvenir Pitcher, Guy V. Kingree, Smoketown; Partial Child Set; Willow Platte; Butter Dish; Green Qt. Jars; Canning Jars; Jardiniere; Coal Oil Lights; Small Sadiron; Flatware; Wooden Animals; ABC Blocks; Cooking Utensils; Copper Washboiler; Jug; Crocks; 8-Gal. Crocks; Milk Cans; Sizing Box; Old Grain Cradle; Lantern; Baskets; Coal Sifter; Bird-in-Hand Anniversary Book 1734-1984; WINROSS TRUCKS- Transport for Christ, Chet Long Auct., Victor Weaver 50th Anniversary, Achenbach; Hershey Kisses Truck; Hesston Tractor 100-90 in Box.

COINS: Silver Quarter, Halves & Dollars; Guns-Davis & Son 12 Ga. Double Barrel Shotgun, Stevens Bolt Action 22; Hand & Garden Tools; Handyman & Hyd. Jacks; Vise; Air Compressor; Showels; Forks; Meat Grinder; Old Wooden Egg Crates; Pitcher Pump; 3-Prong Hay Fork; 8-Drawer Wooden Nail Cabinet; Old Slant-Top Feed Chest; Feed Cart; Iron Trough; Bag Wagon; Wheelbarrow; Tobacco Lath; Minnich Bale Box; Platform Scales; Tobacco Scaffolding; 2-Hole Corn Sheller w/Motor; Hog Feeder; Garden Push Harrow; Jacobsen Lawn Mower; Push Mower; 6' Stepladder; 32' Zimmerman Elevator w/Motor; 1977 3/4-Ton Chev. Pickup Truck; many other items not mentioned.

TERMS BY:
MARTIN R. GROFF

Auct. Robert E. & Jeffrey R. Martin
656-7770—AU000580-L

Gerald Hoover, Apprentice
Carl Herr, Atty.

No Out of State Checks
Lunch by Stumptown Mennonite Church
Order of Sale- farm items first, pickup truck & elevator at 11:00, Winross trucks & coins.

SELL
IT
WITH
A

LANCASTER
FARMING
CLASSIFIED

