

Mifflin Co. DHIA



BREED CODES

- 1—Ayrshire
- 2—Guernsey
- 3—Holstein
- 4—Jersey
- 5—Brown Swiss
- 6—M. Shorthorn
- 7—Red Dane
- 8—Mixed
- 9—Red and White

July 1988

Name	Breed	No. Cows	% In Milk	Days	Lbs. Milk	Fat
Lynn & Margaret Neer	Hol	79.2	84.8		23,519	846
Vern-Lae Holsteins	Hol	52.5	88.7		21,582	789
Paul J Zook	Hol	52.3	86.7		21,274	772
David R Spicher	Hol	83.5	89.2		20,056	757
John Saloma						
Byler	Hol	42.5	85.9		21,271	754
Lowell J. Peachey	Hol	59.2	86.9		20,625	746
John K Kauffman	Hol	77.8	89.7		20,711	744
David J Ruth						
Peachy	Hol	50.6	90.0		20,194	742
Paul H Yoder	Hol	60.5	88.5		19,912	741
Charles L Forgy	Hol	63.0	89.0		19,242	738
R. Glenn Yoder	Hol	76.0	87.2		18,962	736

J Loren Yoder	Hol	43.0	89.1		19,223	732
Mark S Yoder	Hol	91.2	86.6		19,401	730
John B Peachey	Hol	75.9	89.1		18,823	728
Marvin R. Kanagy	Hol	41.3	88.4		19,825	726
J. Irvin Zook	Hol	44.0	88.9		19,233	721
John L King	Hol	47.9	88.8		19,424	719
David W Yoder	Hol	81.4	88.2		19,390	715
David C Yoder	Hol	58.1	84.7		18,936	713
James G. Laughlin	Hol	42.8	88.5		18,569	712
Darren L. Peachey	Hol	47.6	85.8		19,431	707
Jesse L. Spicher	Hol	38.3	87.2		18,469	703
Nathan & Mark Peachey	Hol	103.9	90.4		18,711	702
G. Sheldon Peachey	Hol	58.1	88.2		19,477	699
Joseph E. Kurtz, Jr.	Hol	41.7	87.2		19,318	697
Peachee Farms	Hol	71.3	85.6		18,775	696
David T Hostetler	Hol	37.3	88.3		18,138	694
Byler Brothers	Hol	85.5	87.9		18,162	692
Kore J Peachey	Hol	58.3	87.8		18,670	691
James H Allison	Hol	54.6	86.6		20,976	691
Joseph N Peachey	Hol	39.7	85.7		19,287	687
Frank J Hartzler	Hol	60.4	89.5		18,825	686
Louis S. Peachey, Jr.	Hol	59.6	84.1		17,685	684
Vernon L. Kauffman	Hol	40.6	83.6		18,756	683
Elwood R Byler	Hol	30.7	87.9		16,980	678
James L. Hostetter	Hol	48.6	92.0		17,032	677

L J Dunmire, Sons	Hol	99.4	89.1		18,981	675
Elmer S Peachey	Hol	57.7	88.1		19,067	672
Robert Stayrook	Hol	33.5	87.1		18,173	671
Aquilla I. Yoder	Hol	79.9	91.3		18,217	669
Merle E Yoder	Hol	37.3	91.4		18,887	669
Hollo-Home Farm	Hol	58.8	87.0		18,152	668
John A Yoder	Hol	40.4	90.0		18,754	666
Dry House Farm	Hol	96.4	86.3		18,539	663
Raymond S Hostetler	Hol	39.8	87.4		18,063	662
Robert L Kauffman	Hol	29.8	88.1		19,103	662
Enos J Kurtz	Hol	32.1	87.5		18,161	662
Steven N Peachey	Hol	37.4	91.4		18,536	660
Kore E Yoder	Hol	68.4	87.9		17,486	660
Ed Glick	Hol	39.2	86.4		17,688	656
Leroy & Rod Kauffman	Hol	60.6	87.8		18,558	655

Lactations

Peachee Farms						
Annie	Hol	3-11			19,271	996
Dandy	Hol	3-05			20,558	876
R. Glenn Yoder						
Tidy	Hol	5-07			16,213	859
David R. Spicher						
Susie	Hol	8-09			26,157	1095
Bertie	Hol	6-06			21,482	920
John L King						
Liza	Hol	8-00			24,213	915

(Turn to Page D16)

Brillion
**AUTOMATIC RESET
DEEP TILL**



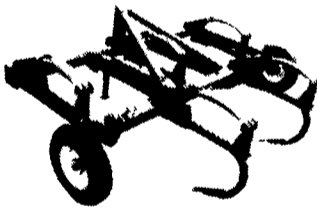
REDUCE COMPACTION
Deep Till Penetrates As Deep As 18 Inches

CONTROL WIND & WATER EROSION
Residue Left On Surface Ties Down The Top Soil

BREAK UP HARDPAN: SHATTER THE SOIL
Soil Is Aerated; Crops Respond With Better Yields

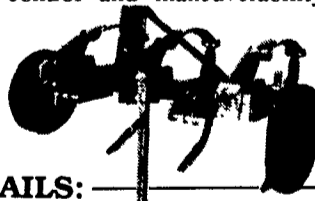
TWO-BAR OR FRAME

The frame type DEEP TILL is available with a Category II or III hitch and may be equipped with the optional drawbar hitch to convert it to a pull type. The hitch features both clevis and straight drawbar for four-wheel drive tractors. Adjustable top arm controls the front-to-rear leveling of the machine. Sizes range from 12'6" to 27'6". Hydraulic gauge wheels control working depth from 8" to 18". The pull-type hitch is easily removed to convert the unit to a 3-point Category III hitch model. The automatic reset feature on all models allows non-stop tilling and eliminates the inconvenience, downtime and expense of replacing shear bolts. All frame type Deep Tills must be used with pull-type hitch when using either style trash cutting coulters.



SINGLE RANK MODEL

The three shank model, shown below, has a Category II hitch. With a cutting width of 7'6", it is ideal for operators with smaller acreages and horsepower. It is extremely maneuverable, yet provides the same basic deep tilling job as its "big brothers". The single rank model provides simplicity and durability. It is available in 3, 5 and 7 shank sizes, in working widths of 7'6", 12'6" and 17'6". Shank spacing is 30" but can also be set at 20" in light trash conditions. Single rank models are close coupled to the tractor for effective control and maneuverability. Manually adjusted gauge wheels control working depth to 18". A speed of 4 1/2 to 6 MPH is recommended.



CONTACT YOUR BRILLION DEALER FOR DETAILS:

PENNSYLVANIA

S G LEWIS & SON, INC.
352 N. Jennersville Rd.
West Grove

M.S. YEARSLEY & SONS
West Chester

ADAMSTOWN EQUIP., INC.
Box 456,
Adamstown

MILLER EQUIP. CO.
Rt. 1
Bechtelsville

IVAN J. ZOOK FARM EQUIPMENT
Box 5, Star Route
Belleville

C.H. REINHIMER & SONS
RD 1, Berwick

GUTSHALLS, INC.
Rt. 34, 1201 Spring Rd.
Carlisle

WENNER FORD TRACTOR
Route 202
Concordville

GEORGE N. GROSS, INC.
5261 Davidburg Road
Dover

CHARLES SNYDER, INC
RD #3
Tamaqua

GEORGE V. SEIPLE
VanBuren Road
Easton

MESSICK FARM EQUIPMENT CO
Rt. 283, Rheems Exit
Elizabethtown

MEYER'S IMPLEMENTS, INC.
400 N. Atrim Way
Greencastle

SWEIGARD BROS.
RD #3, Box 13
Halifax

SHARTLESVILLE FARM SERVICE
RD #1, Box 1392
Hamburg

FINCH SERVICES-HANOVER, INC.
515 Frederick Street
Hanover

NORMAN D. CLARK & SON
Honey Grove

C.B. HOOBER & SON
Intercourse

LANDIS BROTHERS, INC.
1305 Manheim Pike
Lancaster

UMBERGER'S OF FONTANA
RD #4, Box 132
Lebanon

GUTSHALL'S, INC.
RD 2, Rt. 850 West
Loyalsville

NH FLICKER & SONS, INC
Maxatawny

CLUGSTON FARM EQUIPMENT
HCR 80 - Box 22
Needmore

A B C GROFF, INC.
110 S. Railroad Avenue
New Holland

PEOPLE'S SALES & SERVICE
Oakland Mills

PIKEVILLE EQUIPMENT, INC.
Oley

ANGELO'S FARM EQUIPMENT
RD #1 - Box 303
Perryopolis

GRUMELLI FARM SERVICE
Robert Fulton Highway
Quarryville

WALTEMYER'S S & S INC
RD #3, Box 43 B
Red Lion

SUMMIT MACHINERY, INC
PO Box 325
Somerset

MARYLAND
CECIL E. JACKSON
EQUIPMENT, INC
RRD2 Box 48X
Oakland
FINCH SERVICES, INC
PO Box 565
Westminster

AG INDUSTRIAL EQUIPMENT
1207 Telegraph Road
Rising Sun

NEW JERSEY

FRANK RYMAN & SONS
Washington

LESLIE FOGG
RD #3, Box 179
Bridgeton

REED BROTHERS EQUIPMENT
Petticoat Bridge Rd
Columbus

FOSTER EQUIPMENT SALES
Elmer

CALDWELL TRACTOR & EQUIPMENT
480 US Route 46W
Fairfield

PONIATOWSKI BROS EQUIPMENT CO
Route 31 & Church St
Flemington

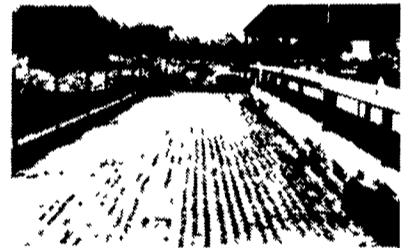
SHORE TRACTOR CO
RD #1 - Rt 9
Freehold

MAKAREVICH BROS., INC
Stiger Street
Hackettstown

**SLICK CONCRETE
CAN BE ROUGHENED**

SCABBLING is an effective way to avoid unnecessary losses of cattle. The SCABBLER makes bands about two inches wide approximately 1/8" to 3/16 in. depth. This gives sufficient area for good footing while allowing you to scrape the smooth surface as before. It is near enough to the surface to give your cows full advantage of the roughness and deep enough to remain effective for years. It greatly aids in heat detection.

And the good news is that it is reasonably priced. You have the choice of doing it yourself or having us do it for you. We offer service right to your door. Call us for more details.



SUBURBAN RENTALS, INC.

Call 800-692-0123

We go almost anywhere

EAR CORN

**Paying Top Prices For
Good Quality Ear Corn**

- Wet or Dry
- No Quantity too large or too small
- Fast Unloading - Dump on Pile & Go
- Easy access - 2.2 miles off 283 bypass-Manheim, Mt. Joy exit
- Daily Receiving 7:30 A.M. to 5 P.M. - unloading evenings & Saturdays by appt.
- Trucks available for pick up at your farm.

Call Anytime For Price
717-665-4785

JAMES E. NOLL GRAIN



**ON THE MOVE...
IN TO THE 90's**