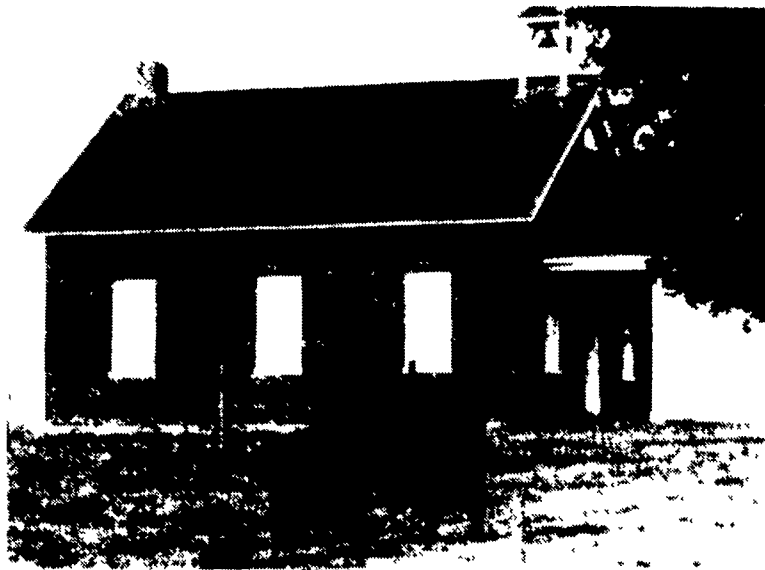


New Windsor Heritage Tour



On Sunday, October 2, New Windsor, Maryland will open nine of its most prestigious historic properties for inspection. This one room schoolhouse is one of a very few that remain in near original condition in the County. The brick building crowns a knoll in the rolling countryside of this rural farming community. The prize-winning Angus herd of the Lovell family grazes the pastures around the schoolhouse.

Tickets will be available after noon on the day of the tour at the New Windsor Associate Reformed Presbyterian Church at a cost of \$10 per person. Proceeds from the event benefit the New Windsor Community Action Project (NEW-CAP). For further details, call (301) 775-7371 or (301) 875-2054.

Financial Management

LEBANON — Patricia Powley is serving as a multi-county agent specializing in all areas of financial management. In addition to Lebanon County Patricia will be responsible for Cumberland, Dauphin, and York Counties. Her programs include "Organizing Personal and Family Financial Records," "Families Managing Money," "Take Control of Your Finances," "Managing A Money Crunch," and "Basic Money Management- A Training For Agency Personnel and Volunteers." These programs are available for groups as well as individual counseling sessions. Patricia can be contacted directly by calling (717) 921-8803, her office in Dauphin County, or at her Lebanon office 274-2801, Ext. 348.

Insurance:

What's Needed- What's Not
When: October 19
Where: Room 11 Extension Office

Time: 9:30-11:30 a.m. or 7:00-9:00 p.m.

Cost: \$5 per household
Class limit: 12 households
Deadline for registration: October 12

Many families avoid thinking about insurance hoping their needs will be magically protected. This procrastination often results in purchasing not enough, or the wrong kind of insurance. Through this program, you will learn about

adequately protecting your family, yourself and your possessions. You will learn how to: 1) sort through insurance terms, 2) assess current needs, 3) spend insurance protection dollars effectively, and 4) decide what needs to be insured.

Health Fair

(Sullivan County) — The Family Living Committee of the Penn State Cooperative Extension-Sullivan County is sponsoring a County Health Day to be held on Saturday, October 15, from 7:30 a.m. to 12 noon at the Sullivan

County High School.

The following free screenings will be provided by local physicians and agencies: Blood Pressure, Audiometer (hearing test), Teaching Breast Exam, complete eye examination including Glaucoma, Peak Flow (Smokers),

and Glucose. The following screenings will be offered at a reduced cost: Adult tetanus booster, influenza (flu shots), pneumovax (pneumonia), and PAP smear. Water test kits can be purchased at a reduced price at the Health Fair.

2 GREAT HEATERS! 2 GREAT PRICES!



- Circulating Fan
- Removable Fuel Tank
- Computer Controlled Thermostat
- Heats 700 sq ft
- Overheating Prevention System

\$30⁰⁰ OFF

WICKLESS HEATER

With Coupon - Model HMF13
Mfr List — \$349 Our Low Price \$219

ONLY \$189 with coupon
Expires 10/7/88



- 5 Year Warranty
- Heats a Large Room
- Non Shocking Element

\$10⁰⁰ OFF

ALADDIN MINI-HEATER

Heats for only 3' an hour
Mfg. List \$199.00 Our Low Price \$115.00

ONLY \$105 with coupon
Expires 10/7/88

LEOLA KEROSENE HEATING CENTER • WE SHIP UPS •

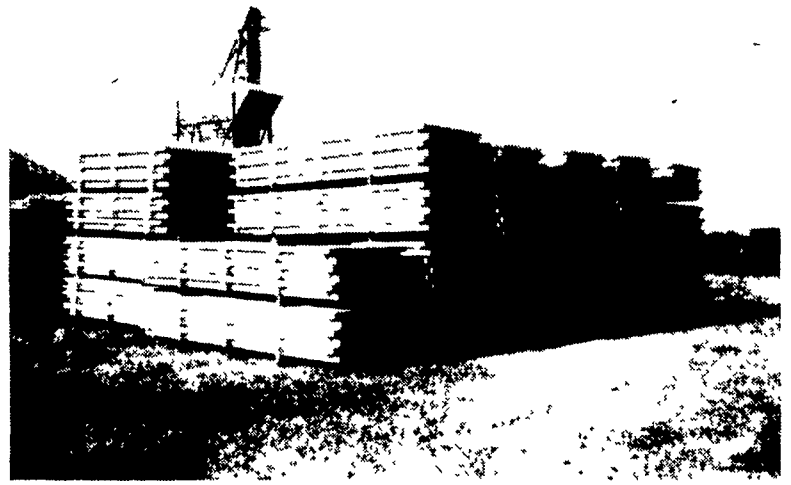
CALL 1-800-252-4900 for Next Day Delivery

SYRI-CON PRECAST CONCRETE CORP.

477 E. Farmersville Rd., New Holland, PA 17557
717/355-2361 or 717/656-2992 (evenings)

**We're Your Local
Precast Concrete
Manufacturers**

- Hog & Cattle Slats -
- H-J Type Bunks -
- Post - Beams -
- Solid Tops -
- Concrete Hog Penning



**Call Us For A List Of Satisfied Customers
Be Sure To Ask Us About Quality Precast Products
At Competitive Prices**



Waffle Finishing Gang Slats 3/4" Slot

Sizes Available

- 2' & 4' wide x 3' long
- 2' & 4' wide x 4' long
- 2' & 4' wide x 5' long
- 2' & 4' wide x 6' long
- 2' & 4' wide x 7' long
- 2' & 4' wide x 8' long
- 2' & 4' wide x 9' long
- 2' & 4' wide x 10' long
- 4' wide x 11' long
- 4' wide x 12' long

- 7,500 P.S.I. Steam cured concrete for long life
- Large percentage of opening keeps slats clean and dry.
- Waffle Deck can be undercut to 1 1/2" thickness so it can replace existing steel slatted areas.
- Can be carried into existing barns. Weight only 18 lb./sq. ft.

Engineered "Waffle Slats" Now Made In New Holland, PA

Heart To Heart

HEART TO HEART, a support group for families of children with heart problems, will meet on Monday, October 3, at 7:00 p.m. at the American Heart Association office, 610 Community Way, Lancaster.

Warren Smith, Social Worker at Hershey Medical Center, will address the topic of doctor-parent relationships in a talk entitled "What To Ask."

Child care will be available. Call the Heart Association office at 393-0725 for further information.