

Breeding Swine Show

(Continued from Page D18)

March Gilt
1. John Strawbridge, 2. John Strawbridge, 3. Carolyn Thomas

April Gilt
1. John Strawbridge, 2. John Strawbridge, 3. Carolyn Thomas

Junior Champion Sow
John Strawbridge

Reserve Junior Champion Sow

John Strawbridge

Grand Champion Sow

John Strawbridge

Reserve Grand Champion Sow

John Strawbridge

Lightweight Barrow

1. Carolyn Thomas, 2. John Strawbridge, 3. John Strawbridge

Mediumweight Barrow

1. Carolyn Thomas, 2. John Strawbridge, 3. Carolyn Thomas

Heavyweight Barrow

1. Carolyn Thomas, 2. John Strawbridge, 3. John Strawbridge

Champion Barrow

Carolyn Thomas

Reserve Champion Barrow

John Strawbridge

Pen of Lightweight Barrows

1. Carolyn Thomas, 2. John Strawbridge

Pen of Heavyweight Barrows

John Strawbridge

Champion Pen of Barrows

John Strawbridge

Reserve Champion Pen of Barrows

Carolyn Thomas

Young Herd

1. John Strawbridge, 2. Carolyn Thomas

Get of Sire

1. John Strawbridge, 2. Carolyn Thomas

Produce of Dam

1. John Strawbridge, 2. Carolyn Thomas

Brooders Feeder Litter

1. John Strawbridge, 2. Carolyn Thomas

YORKSHIRE

January Boars

1. John Strawbridge, 2. Wilson Yorkshires, 3. Daniel J. Hartman

February Boar

1. John Strawbridge, 2. Wilson Yorkshires, 3. John Strawbridge

March Boar

1. John Strawbridge, 2. Thomas Robinson, 3. John Strawbridge

April Boar

1. John Strawbridge, 2. John Strawbridge, 3. Wilson Yorkshires

Champion Boar

John Strawbridge



John Strawbridge exhibited the champion Hampshire sow at the York Fair

Reserve Champion Boar

Wilson Yorkshires

Mature Sows

1. John Strawbridge, 2. Wilson Yorkshires, 3. Wilson Yorkshires

Junior Yearling Sows

1. John Strawbridge, 2. Bill Griffith, 3. Wilson Yorkshires

Senior Sow

1. Thomas Robinson, 2. Wilson Yorkshires, 3. Wilson Yorkshires

Champion Sow

John Strawbridge

Reserve Champion Sow

Wilson Yorkshires

January Gilt

1. John Strawbridge, 2. John Strawbridge, 3. Daniel J. Hartman

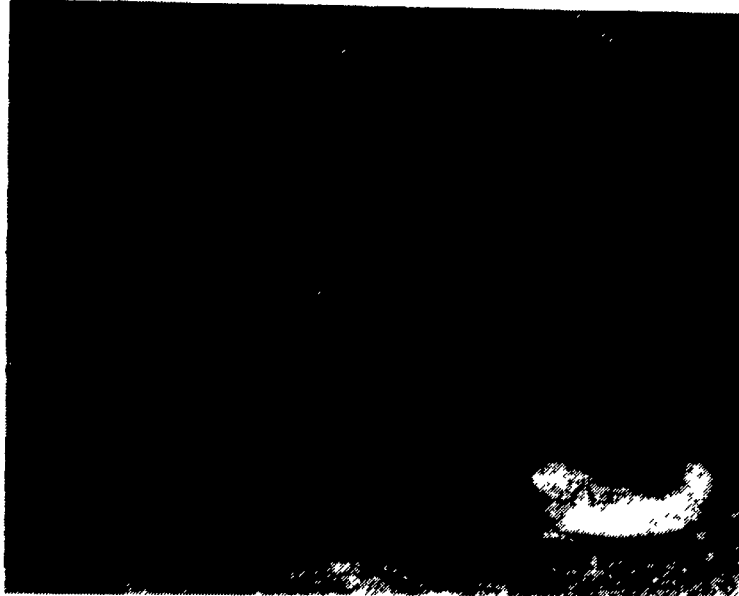
February Gilt

1. John Strawbridge, 2. John Strawbridge, 3. Wilson Yorkshires

March Gilt

1. John Strawbridge, 2. John Strawbridge, 3. Thomas Robinson

(Turn to Page D20)



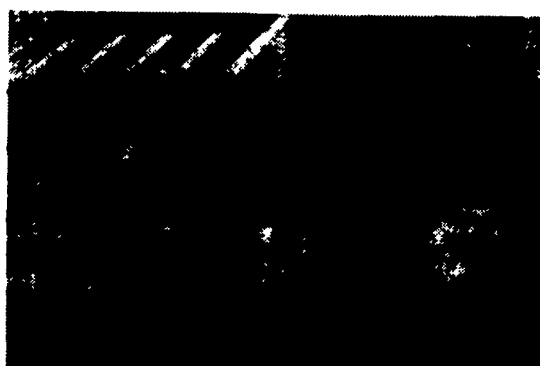
Gus Parlett exhibited the champion Duroc gilt at the York Fair.

POLY-VINYL FENCING

(13 Different Styles To Choose From)



"Vinyl Horse Fence"



"Vinyl Picket Fence"

For More Information Contact:

QUALITY FENCING & SUPPLY, INC.

622 N. Shirk Road
New Holland, PA 17557
717-354-9760

AGRI-INC.

Custom Built Farm Buildings
Designed To Your Needs

Specializing In Dairy Systems:

- Dairy Complexes And Replacement Stock Facilities
- Horse Stall Barns And Riding Arenas
- Workshop And Machinery Storage Buildings
- Timber Column Buildings For Light Commercial

Let Our Experience Work For You -
CALL NOW



AGRI-INC. Designers And Builders

R D 4, Ephrata, PA 17522 • (717) 354-4271

Serving The Agricultural Industry For Over 20 Years



Kawasaki

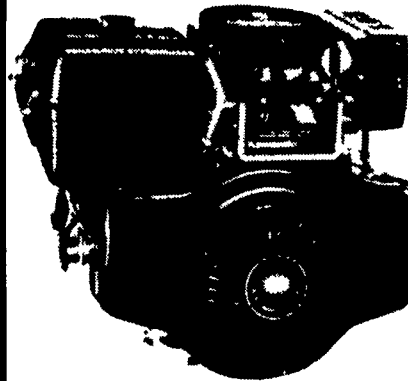
BUILT FOR KEEPS

High Quality. Low Price.

If you haven't seen the new style
Kawasaki yet you should look it over!

ATTENTION BALER ENGINE OWNERS

This twin 20 hp is becoming very popular for hay balers and other applications traditionally equipped with 2 cylinder Wisc. engines and can also replace the older 4 cylinder engines on some applications. Adaptors in stock to use Wisc. clutch or reduction.



**20 HP
Kawasaki Engines
now feature:**

- K-Tronic Solid-State Ignition
- Quieter Mufflers With Guards
- Ball Bearings On Crank Shaft and Camshaft
- Long Life Cast Iron Cylinders
- Dual Element Heavy Duty Air Cleaners
- New Styling And Color
- Full Pressure Lubrication

The above along with ease of service and maintenance and 100% back-up with parts and service make Kawasaki engines your best value for your money.

CHECK IT OUT AT YOUR LOCAL DEALER NOW!

HAVE YOU TRIED A KAWASAKI LATELY?
See Your Local Dealer

Beller Engine Repair Shop
1622 Georgetown Rd.
Christiana, PA 17509

Ridge Repair Shop
159 E. Church St.,
Stevens, PA 17278
215/267-8417

Spring Garden Repair
145 Spring Garden Rd.
Kinzer, PA 17535

Stoltzfus Engine Service
2447 Stumptown Rd.
Bird-In-Hand, PA 17505

Allen Hoover Repair
RD#1
Mifflinburg, PA 17844
717/966-3821

Smucker's Repair Shop
94 Summit Hill Dr
Strasburg, PA 17579

Beller's Saw & Repair Shop
RR 1 - Box 98
Loganton, PA 17747

Sensenig Diesel Service
RR 3 - Box 97
Selinsgrove, PA 17870

Lapp's Sharpening Service
RR 2 - Box 276
Myerstown, PA 17067

Beller Farm Shop
Aaron B. Beller
450 A Vintage Rd
Paradise, PA 17562
Emanuel S. Lantz
3816 E Newport Rd
Gordonville, PA 17529

Zook Engines
RR 4 - Box 344
Honey Brook, PA 19344

Beller Engine Service
280 Pennsy Rd
New Providence,
PA 17560

Stoltzfus Repair Shop
Star Route - Box 31A
Rebersburg, PA 16872

Shirk's Repair Shop
RD #2 Pool Road
Ephrata, PA 17522
717/859-2797

Beller's Repair
RR2 - Box 54
Watsontown, PA 17777