

Carlisle Livestock Market

Carlisle, Pa.

Tuesday, Sept. 20, 1988

CATTLE HOLSTEINS CHOICE 64 00-67.00, GOOD 59 75-63.75, MEDIUM 58 00 & DOWN
HEIFERS MEDIUM GOOD HOLSTEINS 50 50-59 50 COWS STRONG DEMAND! EARLYBIRD PENS FIRM 3 00 HIGHER HIGH YIELD 49 00-51 85, GOOD 46 50 48 85, MEDIUM 44 50 46 25, BIG MIDDLE 42 50-47 75, SHIFLLY 42 50 & DOWN FAT BULLS MEDIUM-GOOD 52 50-57 25

FEEDER CATTLE VERY STRONG DEMAND! SPECIAL FEEDER CATTLE SALE TUESDAY, SEPT 27th 7 30 P.M. STEERS (300-900 LBS.) CHOICE 87 00-90 00; GOOD HOLSTEINS 78 00-86 00, MEDIUM HOLSTEINS 60 00-72.00 HEIFERS (ALL WEIGHTS) MOSTLY HOLSTEINS OFFERED; GOOD 70 00-79 00, MEDIUM 60 50-69.00.

BULLS (ALL WEIGHTS) CHOICE 79 50-88 00, GOOD 69 00 76 50, MEDIUM 60 00-68 00.

VEAL CALVES CHOICE 92 00-106 00; GOOD 84 00-91.00, MEDIUM 77 00-83 00, LIGHT/WEAK 75 00 & DOWN FARM BULLS 110 00-140 00

HOGS: BARROWS & GILTS US NO. 1 3 210-250 LBS 39 25-40 85, UNDER 200 LBS 29 25-35 50, 2&3's (HEAVIES) 32 50-39 00

SOWS OVER 450 LB 30 00-31 50,

UNDER 450 31.50-32.75; 2 & 3'S 29.00 & DOWN.

BOARS: 25.75-28.50.
FEEDER PIGS (BY THE HD) (15 LBS. 8 00-8 50) (15-25 LBS 11 00-17 00) (30-50 LBS 21 00 31.00)

SHEEP LAMBS VERY STRONG DEMAND CHOICE 60-80 LBS 67.00-76 00, GOOD & CHOICE 85-100 LBS. 59 00-66 00, MED 50 00-58 00. EWES 20 00-31 00. GOATS (LG) 55.00-75 00, (IID) SM/MED 15 00-51 00

NOTES SALE EVERY TUES EVENING 5 30 PM, RABBITS, POULTRY & EGGS 7 00 PM LIVESTOCK

Westminster Livestock Auction

Hagerstown, Md.

Tuesday, Sept. 20, 1988

Report supplied by auction

SLAUGHTER. COWS HIGH YIELD 48.00-50 25, UTILITY 44 00-48 00, CANNERS 41.00-45.00, SHELLY 41 00 DOWN. BULLS YG#1 56 00-58.75, YG#2 52.00-56 00. FED STEERS 1050-1400 LBS. HI CHOICE 69.00-70.75, SELECT-LO CHOICE 64.00-69.00, CHOICE HOLSTEIN 63.00-66 00. FED HEIFERS 800-1050 LBS. HI CHOICE 68 00-70 50, SELECT-LO CHOICE 60 00-67 00 VEAL CALVES CHOICE 315 LBS AT 97 00, GOOD 80 00-94.00, STANDARD 70 00-80.00, KILLERS 80-110 LBS. 80 00-86 50, 50-80 LBS 70 00-82.00. FARM CALVES HOL-

TEIN BULLS 100-125 LBS 105.00-124.00, 90-95 LBS. 95.00-110 00, HOLSTEIN HEIFERS 90-140 LBS 98 00-110.00. BUTCHER HOGS US#1&3 215-250 LBS. 39 00-40 00, 250-260 LBS #3 34 00-38 00. SOWS 300-500 LBS 29 00-32 00, 500-600 LBS 30 00-31.50, BOARS 300-650 LBS. 26.00-28.00.

STOCK CATTLE STEERS 300-500 LBS. GOOD 86 00 & 101 00, MEDIUM 72 00-82.00, 500-700 LBS 66 00-73 00, 900-1050 LBS 61 00-70 50. HEIFERS 200-400 LBS 70 00 80.00, 400-750 LBS 61 00-72.00, 700-900 LBS. HOLSTEINS 45 00-55 00. BULLS 300-500 LBS 70 00-85.00, 500-700 LBS 66 00-67 00 LAMBS CHOICE 95-120 LBS. 57 00-61.00, GOOD 70-90 LBS 52 00-64.00, YEARLINGS 33 00-35.00. SHEEP 22 00-35.00 GOATS MD LG 40 00-55 00, SM-MD 20.00-40 00. PIGS & SHOATS BY THE HEAD 30 50 LBS 19 00-28 00, 50-70 LBS. 26 00-33 00, 70-100 LBS. 28.00-43 00, BY THE LB 140-200 LBS. 33 00-42 00, STOCK BOARS 200-250 LBS 29 00-38 00

Lebanon Valley Livestock Auction

Fredericksburg, Pa.

Tuesday, September 20, 1988

Report Supplied by PDA

CATTLE 172 PDA. Compared with last Tuesday's market. Slaughter cows uneven, mostly steady to spots .75 higher Two low Choice sl steers 62 75&64 75, two Select 62 00&63.75, Select & Choice 945/1645 lbs holsteins 58 00-65 50 Few 3-4 Choice 945/980 lbs sl heifers 60 00-63 25, two Select 59 50&59 75, few

Standard & Select holsteins 46.00-56, few Standard heiferettes 45.50-49 25, one Utility 40 50 Breaking Utility & Commercial sl cows 47.00-49 75, one 50.00, Cutter & Boning Utility 44 50-48 75, Canner & Low Cutter 41 75-44 25, few down to 39 75, few Shells down to 34 00. One Low Choice sl bullock 65 25, few Standard & Select 53 25-59 00 Few Yield Grade No 1, 1300/1430 lbs sl bulls 57 25-58 25

CALVES 227 Vealers grading Standard and low Good unevenly steady Few Good 90 00-94 00, Standard and Good 85/105 lbs 80 00-88, 65/80 lbs 71 00-80, Utility 45/75 lbs 50 00-70 00. Farm Calves Hol Bulls 95/120 lbs. 100 00-136, 80/90 lbs. 90.00-92 00; Hol Heifers 90/120 lbs 90 00-118 00

HOGS 150. Supply included 60 Sows Small supply barrows and gilts unevenly steady US No. 1-2 220/255 lbs 40 35-40 50, few 1-3 235/250 lbs 40 00, few 2-3 205/225 lbs 37 00-39 25, few 425/565 lbs 32 00-32 50 Sows mostly steady to \$1 higher US No 1-3 295/605 lbs sows 29 00-32 50, few 2-3 425/565 lbs 28 00-30, Medium (few) 280/425 lbs 23 00-27 00. Few Boars 25 00-26 50, Light weights 31 00-33 50

FEEDER PIGS 0 No Market Test
SHEEP 6 Few Choice 65/100 lbs spring slaughter lambs 56 00-61 00
GOATS 0. No Market Test

Frederick Livestock Auction

Frederick, Md.

Monday, Sept. 19, 1988

Report Supplied by Auction

BUTCHER COWS: GOOD RUN 1 50 HIGHER! GOOD 47.00-50.00, ONE TO 52 00; STANDARD AND UTILITY 44.00-47 00; CANNERS 41 00-45 00, SHELLY 41.00 DOWN.

BULLS, MEDIUM TO GOOD 51.75-57.00
STEERS, SELECT 63.00-67.50.

HEIFERS, GOOD HOLSTEINS TO 55.75.

BUTCHER HOGS, NO TOP WEIGHTS OFFERED; 210-230 LBS. NO. 3'S TO 38.25; 10 HD. #3 200 LBS. 36.50; 270-290 LBS. 33.00-34.00.

SOWS, BULK 300-600 LBS. 26.00-28.00, 1 350 LB. AT 34.75; THIN SOWS 24.00-26.00.

VEAL CALVES, NO CHOICE OFFERED. GOOD 150-300 LBS. 79.00-83.00; STANDARD 70.00-79.00; CULLS 80-120 LBS. 82.00-94.00, 50-80 LBS. 72.00-85.00; WEAK AND ROUGH 60.00 DOWN.

CALVES RETURNING TO FARM, HOLSTEIN HEIFERS, 90-120 LBS. 120.00-133.00; 85-95 LBS. 92.00-115.00; 100-115 LBS. 11.00-126.00.

LAMBS, GOOD, 90 LBS. 53.00;

YEARLINGS TO 41.00.

STOCK CATTLE, MAINLY BULLS OFFERED, STEERS GOOD 75.00-85.00; BULLS 300-500 LBS. 79.00-87.00; 500-700 LBS. 72.00-82.00; 700-850 LBS. 65.00-71.00; DAIRY COWS, FRESH 600.00-785.00; SPRINGING HEIFERS, ONE AT 65.00.

PIGS AND SHOATS, 75 HEAD. BYS THE HEAD 25-40 LBS. 16.00-22.00; 40-60 LBS. 24.00-26.00; BY THE LB. 150-170 LBS. 33.00-35.00.

Dewart Livestock Auction

Dewart, Pa.

Monday, September 19, 1988

Report Supplied by PDA

CATTLE 139 PDA. Compared with last Monday's market: Slaughter cows .50 to \$2 lower Couple Select sl. steers 60 50&61 75, few Select & Choice 1400/1750 lbs. holsteins 55.25-58.75. Few Choice sl. heifers 58 50-64.25. Breaking Utility & Commercial sl. cows 46 00-48 75, few High dressing 53.10, Cutter & Bon. Utility 44.00-48, Canner & Low Cutter 39 00-44, Shells down to 37.00. Few Yield Grade No. 1, 1080/1275 lbs. sl. bulls 52 25-58 00 FEEDER CATTLE: Few Medium Frame No. 1, 390/570 lbs. heifers 66 00-72.00

CALVES 210. Few Choice vealers 94 00-101.00, Standard & Good 70/100 lbs 81 00-89.00, Utility 60/90 lbs. 70 00-80 00 Farm Calves: Holstein Bulls 90/130 lbs 92 00-152.00, few Hol. Heifers 90/110 lbs 95 00-108 00.

HOGS 72. Lot US No. 1-3 230 lbs barrows and gilts 39.35, one lot 2-3 250 lbs. 38 00, few lots 1-3 200/210 lbs. 38 10-38 75. US No. 1-3 275/575 lbs sows 27 75-31 00. Few Boars 26 00-28 25

FEEDER PIGS 163. US No 1-3 10/20 lbs feeder pigs 8.00-9.00, 1-3 35/45 lbs. 17 00-21.00, Utility 40/65 lbs 10 00-15.00 --- per head.

SHEEP 23. Few Good & Choice 40/100 lbs spring slaughter lambs 54.00-64.00. Slaughter ewes 15.00-32.00.

GOATS 0 No Market Test.

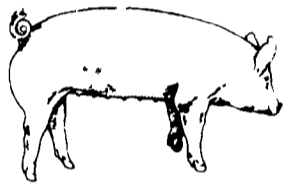
Peoria Sheep

Peoria, Illinois

Tuesday, September 20, 1988

FEDERAL-STATE MARKET NEWS FLASH, MIDSESSION AND CLOSE SHEEP: 200 TRADING MODERATE. COMPARED WITH LAST TUESDAY SLAUGHTER LAMBS MOSTLY 2.00 LOWER. NOT ENOUGH SLAUGHTER EWES FOR A MARKET TEST.

SLAUGHTER LAMBS: CHOICE AND PRIME 95-120 LBS. 57.00-58.00 FEW 59.00-60.00 CHOICE 90-120 LBS. 53 00-57 00.



EMERY'S BUYING STATION

OPEN TO RECEIVE YOUR MARKET HOGS

AT THE GREEN DRAGON MARKET RD 4, EPHRATA, PA 17522 1 MILE NORTH OF EPHRATA ON NORTH STATE STREET.

HOURS: MONDAY, TUESDAY, and WEDNESDAY 7:00 A.M. to 11:30 A.M.

215-458-5677 Residence
 717-733-9648 Office

YOU ARE PAID FOR YOUR HOGS IMMEDIATELY

Ken & Lois Emery, Proprietors

Green Dragon Livestock Sales



Location: Ephrata RD 4. 1 mile N. on North State St., Ephrata.

COWS COWS COWS SALE EVERY FRIDAY

Lots of good Northern Feeder & Stockers. Slaughter Cows' - Bull Steer, Veal-lamb.

11:00 A.M.-Beef Sale 200-300 each week.

1:00 P.M.-Dairy Sale.

7:00 P.M.-Small Animal Sale.

For Special Sales and Herd Dispersals on farm or at our barn or other market information call: Office 717-733-2444, Home 717-838-4318.

WALTER H. RISSER, Proprietor

All out of state and new buyers must have cash or certified check or current letter of credit from bank.

C.B. HOOBER & SON, INC.
 Intercourse, PA
 (717) 768-8231



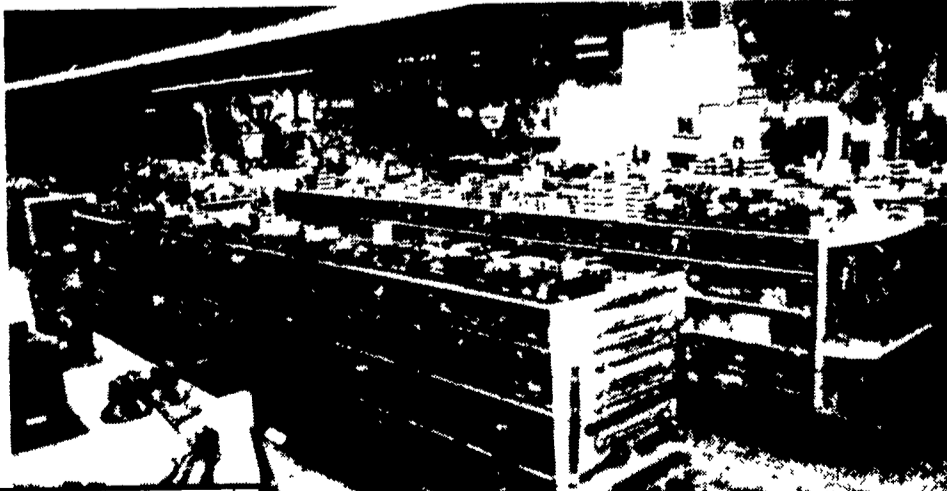
HOOBER EQUIPMENT, INC.
 Middletown, DE
 (302) 378-9555

TWO LOCATIONS

The Saving Place

WE SHIP PARTS DAILY

Via UPS - PPSH - BUS - AIR FREIGHT, ETC.



YOU STAY PUT

Pick Up Your Phone And Place Your Parts Order With Us

HOURS

Mon.-Fri. 7 AM-5 PM; Sat. 7 AM-Noon

CALL US... It Could Be We Have It



Authorized UPS Station

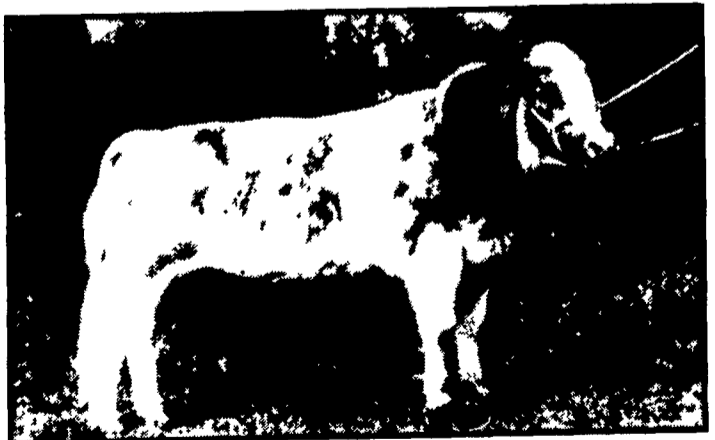
DOUBLEAN GENETICS

specializing in

Belgian Blues and Piedmontese

Breeds With "Lean" Genes

Low Fat, Low Cholesterol, Good Taste
 Excellent for Crosses to Beef or Dairy Cattle
 Selected for Calving Ease, High Yield



COURAGE, A BELGIAN BLUE BULL

SEMEN, EMBRYOS, CATTLE AVAILABLE

CALL OR WRITE
 DR. DON SILVERT

DOUBLEAN GENETICS CORP.

P.O. BOX 547, NORWALK, CT 06852
 203-846-9359