

Progress with Superior Genetics in a Breeding Program that Works for You

Quality Genetics at Reasonable Cost:



8H1509 Likabul
 +\$195 +1,924M -.09%F +51F
 38 D/37 H 69%R +1.15 PDT
 (\$16 per unit)



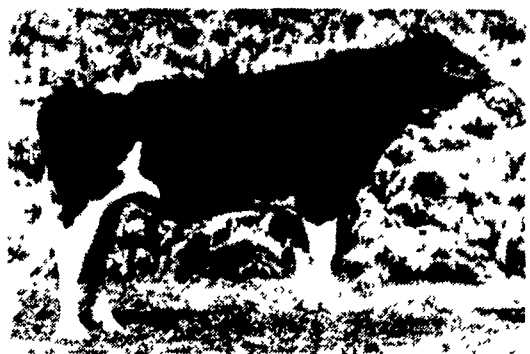
8H550 Dazzler
 +\$169 +1,850M -.15% +38F
 133 D/93 H 83%R +1.40 PDT
 (\$16 per unit)



8H585 Outlook
 +\$178 +1,836M -.11%F +44F
 54 D/47 H 69%R +.92 PDT
 (\$12 per unit)



8H1523 Belltone
 +\$155 +1,402M -.03%F +45F
 45 D/45 H 71%R +1.16 PDT
 (\$14 per unit)



8H1555 Ringer
 +\$147 +1,069M +.07%F +52F
 55 D/51 H 73%R +.70 PDT
 (\$10 per unit)



8H1581 Race
 +\$166 +1,239M +.07% +58F
 40 D/38 H 66%R +.83 PDT
 (\$18 per unit)

Mating Program Options:

Linear-Mate S

features a personal review of each cow and sires recommended by an Atlantic trained and experienced Linear-Mate Specialist

Linear-Mate C

professional evaluation by our Linear-Mate Specialist, followed by unbiased computer-generated sire recommendations for each cow

TRAIT-MATE

dairyman and/or Technician-DHR determine up to two faults on each cow and receive computerized sire recommendations from a list of bulls you pre-select

HERD-MATE

dairyman and/or Technician-DHR identify herd needs, then our computer provides a list of recommended sires as reference for individual mating selections when the cows are bred

(you can still get in on our "Summer Savings" special offer on mating programs)

(all data July/88 USDA & HFA)

Tie it all together thru Atlantic Technician and Direct-Herd service!



Call Atlantic Today.

24-hour toll-free service phones:
 Long Distance: 800-444-6456
 Lancaster Local: 569-0411



PARTNER IN **G** FEDERATED GENETICS