

Lebanon Valley Livestock Auction

September 13, 1988

CATTLE 170PDA... Compared with last Tuesday's market: Slaughter cows .50 to \$2 higher. Few Choice 1230/1420 lbs. sl. steers 68.75-71.50, few Choice holsteins 60.25-62, few Select 55.00-60.00. Choice 900/1375 lbs. sl. heifers 64.50-70.50, couple 71.75, few Select 53.25-58.75, couple Choice holsteins 55.75&60.75. Breaking Utility & Commercial sl. cows 46.25-49.75, couple to 52.25, Cutter & Boning Utility 43.75-47.75, few 47.25, Canner & Low Cutter 42.00-44.75, Shells down to 36.00. Few Yield Grade No. 1, 1200/1765 lbs. sl. bulls 55.75-58.75.

CALVES 174... Few Choice 98.00-118.00, few Good 90.00-101, Standard and Good 70/100 lbs. 75.00-86, Utility 60/85 lbs. 59.00-74.00. Farm Calves: Hol. Bulls 90/135 lbs. 89.00-149, mostly 110.00-140.00; Hol. Heifers 75/120 lbs. 72.00-143.00. Few Beef cross bulls & heifers 70/100 lbs. 102.00-146.00.

HOGS 214... Barrows and gilts \$1.50 lower. US No. 1-3 225/250 lbs. 40.25-40.75, 1 lot 230 lbs. 41.60, one lot 1-3 200 lbs. 39.00. US No. 1-3 300/650 lbs. sows 27.50-31.50. Boars 24.00-30.00.

FEEDER PIGS 0... No Market Test. **SHEEP 4...** One Choice 75 lbs. spring slaughter lambs 55.00. Few Slaughter ewes 15.00-20.00.

GOATS 0... No Market Test.

Grantsville Livestock

Grantsville, Maryland

Saturday, Sept. 10, 1988

LARGE 50.00-70.00; MEDIUM 35.00-50.00.

HOGS: TOP BARROWS & GILTS 41.50-43.40; HEAVY BUTCHER 38.50-42.50; LIGHT BUTCHER 33.00-41.50; BUTCHER SOWS 28.00-35.00; FEEDER SHOATS 6.00-28.00.

VEAL: GOOD 95.00-102.00; STANDARD 80.00-90.00; UTILITY 60.00-70.00; HEAVY BULL CALVES 100-140.

SHEEP & LAMBS: GOOD 62.00-66.00; UTILITY 54.00-60.00; SLAUGHTER EWES 18.00-25.00.

SLAUGHTER CATTLE: STEERS: GOOD 68.00-73.75; STANDARD 62.00-64.00; UTILITY 58.00-60.00.

HEIFERS: CHOICE 71.75; GOOD 64.00; STANDARD 58.00-60.00; UTILITY 48.00-54.00.

COWS: COMMERCIAL 43.00-50.00; UTILITY 40.00-42.00; CANNER & CUTTER 33.00-35.00.

BULLS: COMMERCIAL & GOOD 54.00-59.00; CUTTER & UTILITY 48.00-52.00.

STOCK-FEEDER CATTLE: GOOD 65.00-80.00; MEDIUM 55.00-60.00.

STEER CALVES: GOOD 75.00-90.00; MEDIUM 60.00-70.00.

HEIFER CALVES: GOOD 65.00-75.00; MEDIUM 55.00-60.00.

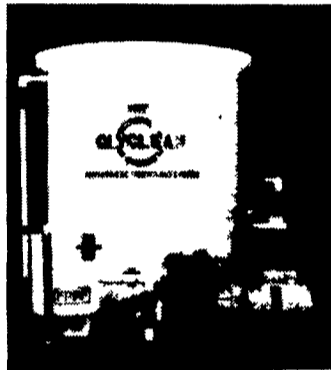
MILLER DIESEL INC.

6030 Jonestown Road
Harrisburg, PA 17112

Phone 717-545-5931 - Interstate 81 Exit 26

ANOTHER SOLUTION TO HAZARDOUS WASTE!

The First Anti-Freeze Recycling System "GLYCLEAN"



FOR COMPLETE INFORMATION WRITE OR CALL

YANMAR

Super September Sale



List \$10,158

MODEL 187D
4 WD, 18 H.P., Ag Tires
P.S. Trans., Live PTO

SEPTEMBER SALE SPECIAL \$6,999

Yanmar Tractors are always a great value. And now the savings are even better than ever during our "September Clearance Sale".

- 12 models from 14 to 33 HP
- Choose 2 or 4 Wheel Drive
- Compare Yanmar quality
- Experience Yanmar's fingertip "Shuttle Power Shift"



Tractors and Implements More than You Expect

Come See! Come Save! Save during our Big September Clearance Sale.

"A Little Out Of The Way... But A Lot Less To Pay"

"SERVICE IS OUR MOTTO"

LAWN CARE OF PA.

Sales & Service

1 Mi. North of Martindale on Crut Mill Rd., Martindale, PA 17548

(215) 445-4541



C.B. HOOBER & SON, INC.
Intercourse, PA
(717) 768-8231

HOOBER

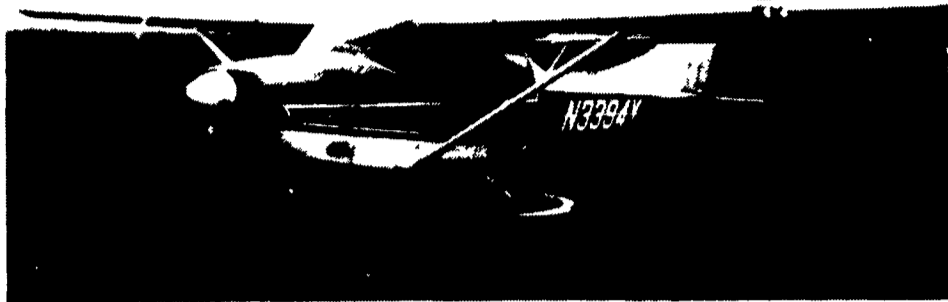
HOOBER EQUIPMENT, INC.
Middletown, DE
(302) 378-9555

TWO LOCATIONS

The Saving Place

WE SHIP PARTS DAILY

Via UPS - PPSH - BUS - AIR FREIGHT, ETC.



HOURS

Mon.-Fri. 7 AM-5 PM; Sat.: 7 AM-Noon

**CALL US...
It Could Be We Have It**



Authorized UPS Station

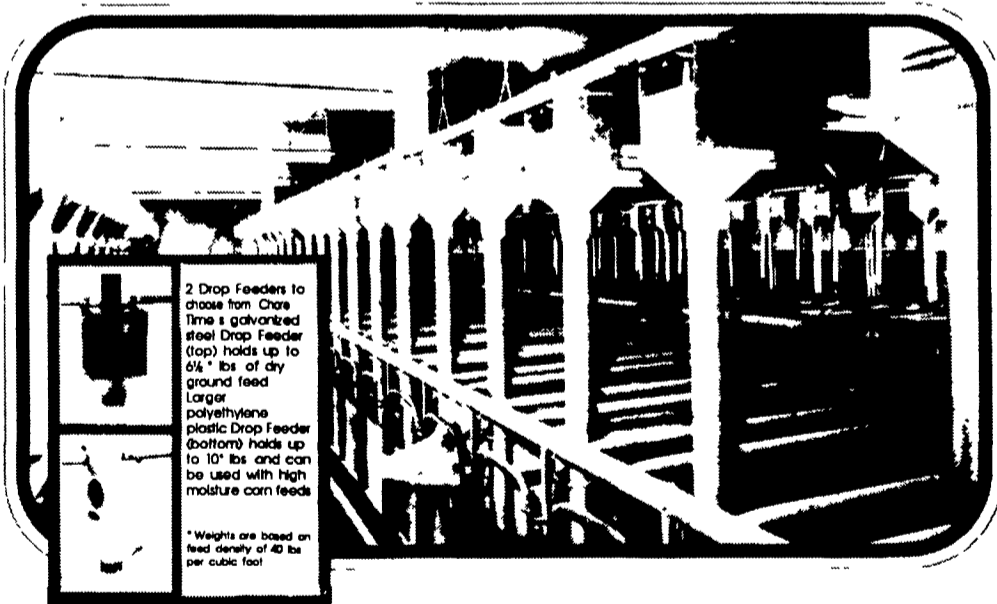


CHORE-TIME



sow feeding system

Take The Hustle And Bustle Out Of Sow Feeding



2 Drop Feeders to choose from. Chore Time's galvanized steel Drop Feeder (top) holds up to 6 1/2 lbs of dry ground feed. Larger polyethylene plastic Drop Feeder (bottom) holds up to 10 lbs and can be used with high moisture corn feeds. *Weights are based on feed density of 40 lbs per cubic foot.

- **Saves Labor.** No more hand feeding. Each time you feed, trip one lever to feed all sows at once. By using an optional time clock and automatic tripper, you can feed your sows - without being there.
- **Saves Feed.** With hand feeding, there's a natural tendency to over feed. This system dispenses an accurate, controlled amount each time to each sow. Feeding sows based on litter size during farrowing can also help you to realize additional feed savings.
- **Bigger, Healthier Litters.** Whether you're feeding

- sows during gestation or farrowing. Chore-Time's Sow Feeding System allows you to control the amount of feed they consume - keeping your sows in better condition. The system also can eliminate feeding stress caused by hand feeding. The result: an extra 2 pigs per sow per year.
- **Longer Sow Productive Life.** Keeping sows in better condition means keeping them longer to get more litters.
- **Longer Equipment Life.** Each sow eats peacefully, so you can eliminate fighting and wear and tear on equipment.

Your Authorized **CHORE-TIME** Distributor

Swine & Poultry Systems Specialists

FARMER BOY AG. INC.

410 E LINCOLN AVE MYERSTOWN PA 17067 PH 717-866-7565

BEST IN DESIGN, PRICE AND EXPERIENCE