

Philadelphia Vegetable Market

September 14, 1988

CLEAR 56-85.
 ARTICHOKE CA carton 24s few 11 00 36s 900.
 ASPARAGUS CA 12-lb crate via air large 35.00 15-lb crate large 40.00 MEXICO 12-lb crate extra large & large 35.00.
 BEANS ABOUT STEADY various bushel containers Round Green type unless otherwise stated NJ 17.00-18.00 MICHIGAN fair quality 14.00-16 00
 BEETS NJ crate bunched 12s 12 00 topped bushel baskets 600-700.
 BROCCOLI ABOUT STEADY carton bunched CA 14s 11.50-12.00 18s 11 50-12 00 ME 14s 800 18s 850 one label 10.00 CO 14s 10.00-10.50 18s 10.50-11.00.
 BRUSSEL SPROUTS Supplies insufficient to quote.
 CABBAGE ABOUT STEADY 1-3/4 bushel carton & crate medium Green unless otherwise stated NJ 650-750 mostly 700 Red small 8-850 PA 700-800 mostly 7-750 Red small-medium 10.00 CANADA 40-lb carton 750-800 Savoy type 700 Red 12.00.
 CARROTS 50-LB SACKS SLIGHTLY LOWER, OTHERS ABOUT STEADY 48-1 lb film bags in film sacks CA medium-large 11.00-13.00 mostly 12.00 MI medium 900 WI medium 10.50 50-lb sacks loose jumbo CA 14 00-15.00 MI 12.00- 13.00 CANADA 12.00-13.00.
 CAULIFLOWER SUPPLIES LIGHT CA carton film wrapped 12s 22.00 CANADA large carton Jacket pack 16s 12.00.
 CELERY LOWER CA carton 1-1/2 dozen 13.00-14.00 2-2-1/2 dozen 15.00-20 00 3 dozen 13.00-14.00 MI carton 2-2-1/2 dozen 13.00-16.00.
 CHINESE CABBAGE OH celery crate 12 00 Nappa 15 00 NJ celery crate few 900 CA 50-lb carton Nappa 15.00.

CORN ABOUT STEADY wirebound crate approximately 4-1/2 dozen unless otherwise stated NY Yellow 12.00 White 13.00 NJ White 13.00.
 CUCUMBERS ABOUT STEADY 1-1/9 bushel crates & cartons Waxed medium unless otherwise stated NY 10 00 fair quality 500-600 VA 10.00 fair quality 500-600 mostly 500 MI one lot 700-800 fair quality 500 small 600.
 EGGPLANT SUPPLIES LIGHT NJ 1-1/9 bushel crate & carton medium 10 00 fair quality 700-800.
 ENDIVE LOWER OH 1-1/9 bushel crate & carton 700-800 mostly 700 NY 1-1/9 bushel carton few 700-800 NJ 1-1/9 bushel crate 600 CA carton 24s 11.00.
 ESCAROLE LOWER OH 1-1/9 bushel crate & carton 700-800 mostly 700 NY 1-1/9 bushel carton few 700-800 NJ 1-1/9 bushel crate 600 CA carton 24s few 13.00.
 GREENS ABOUT STEADY crate approximately 1-1/2 bushel bunched unless otherwise stated OH Collards 600 Kale 700 PA Collards 650-700 Rape 600- 700 Kale 650-750 NJ Collards 6-650 Kale 6-650 mostly 650 CA Red Kale 24s 15.00 Swiss Chard including Red bunched 24s 10.00 20-lb carton Broccoli Rabe loose one label 19.00-20.00.
 LEEKS SUPPLIES LIGHT bunched 12s NJ crate 800-10.00 CA few 15.00.
 LETTUCE ICEBERG LOWER carton 24s unless otherwise stated CA 900- 11.00 mostly 900-10.00 film wrapped 900-10.00 30s 800-900 NY one label 500-700 CANADA few 600.
 LETTUCE-ROMAINE SLIGHTLY LOWER CA 24s carton 10.50-12.00 crate 13.00- 14.00 OH crate 24s 600 NY carton 24s 500 one label few 800 CANADA carton 24s 600.
 LETTUCE-OTHERS BIG BOSTON CA carton 24s 900-10.00 OH crate 24s 500-700 mostly 500-600 NJ crate 24s 500 BIBB OH basket 20s 500 LEAF CA carton 24s

11.00-12.00 Red 11.00-12.00 OH crate 24s 600 Red 600 NJ crate 24s 500 Red 500 NY carton 24s one label few 700-800.
 LETTUCE-PROCESSING No supplies.
 OKRA Supplies insufficient to quote.
 ONIONS-DRY ABOUT STEADY 50-lb sack US#1 or generally good quality Yellow unless otherwise stated CO Grano type colossal 10.00 jumbo 900 White jumbo 10 00-11.00 Red 25-lb sacks medium-large 900-10 00 ID-OR Spanish hybrids colossal 10 00 jumbo 850-900 NY Globe type small-medium 8-850 Red 25-lb sacks large 10 00-11.00.
 ONIONS-GREEN STEADY NJ 4/5 bushel crate bunched 48s 900-10 00 36s 650 MEXICO carton bunched 48s 900
 PEAS-GREEN CA bushel crates 25.00
 PEAS-SOUTHERN Supplies insufficient to quote.
 PEAS-SUGAR 10-lb carton per lb GUATEMALA 180.
 PEPPERS ABOUT STEADY 1-1/9 bushel crates & cartons California Wonder type Green unless otherwise stated NJ large 600 medium-large 400-500 medium 400 Longhots 800-10.00 1/2 bushel carton 500 CA exlarge 700 large 600 medium 500 PA large few 700 medium 450 NY medium 450 CANADA large 600-700 medium 500 small 400 Mixed Red medium 500.
 RADISHES ABOUT STEADY OH carton Red 30-6 oz film bags 600-750 bunched 24s 600-800 NJ lug Red bunched 24s few 400-500.
 SQUASH SLIGHTLY LOWER NJ 1/2 bushel cartons Zucchini small-medium 400-600 mostly 400 medium 250-350 Yellow Straightneck small-medium 900- 10 00 mostly 900 medium 700.
 SWEET POTATOES ABOUT STEADY 40-lb carton Jewel type NC 12.00 large few 900.
 TOMATOES ABOUT STEADY 25-lb carton Pink to Light Red 85% US#1 or bet-

ter unless otherwise stated SALES BY REPACKERS CA 5x6s 16 00 6x6s 14.00 SALES BY OTHERS CA 6x6s 13 00 6x7s 10 00 fair quality 5x6s 14 00-15.00 mostly 14.00 6x6s 12 00-13 00 mostly 12.00 PA 5x6s 15 00 fair quality 5x6s 12.00 6x6s 10.00-11.00 6x7s 800-900 turning to pink large 10 00-12 00 some best 13 00 fair quality 800-900 medium few 700- 800 NJ turning to pink medium fair quality few 500-600 CHERRY TYPE 12-1 pint flats CA 12 00.
 TURNIPS PA topped 25-lb film bags medium 700 1227.

sacks US#1 size A washed or brushed unless otherwise stated Round Whites new crop DE 5-550 mostly 525 large 650-700 NJ 450 one label 525 NY large few 650-700 LI 575 large 675-700 Round Reds MN size B 12.00 NY 900 WI 750-800 size B 12.00 Russets 50-lb carton count new crop ID Norkotah 90s 16.00 100s 14.00 WI Norkotah 80s 11.00 90s 10.00 100s 900 TX Norkgold 80s 10.50 90s 950 100s 850 1137.

NJ Fruit FOB (Seasonal)

September 14, 1988

CLEAR 62-72
 SOUTH NEW JERSEY Sales fob shipping point basis. PEACHES Demand light. Market 2 1/2 inch lower other about steady. Prices represent few sales. 38 lb carton hydrocooled U.S. Extra One & some no grade mark various yellow flesh varieties mostly Autumn glo and Rio-Oso-Gem Wide range in color & condition. 2 3/4 inch & up 11.00-12.00 one brand 15 00 one brand 16.00 2 1/2-2 3/4 inch including 2 1/2 inch & up 9.50-10.00 few 11.00-12.00 one brand 13.00-14.00 one brand 16.00 one brand 17.00 2 1/4-2 1/2 inch including 2 1/4 inch & up 8.00-9.00 few 10.00 one brand 13.00 2 1/8-2 1/4 inch one brand 7.50.

Philly Potato & Onion

September 14, 1988

CLEAR 56-85
 ONIONS-DRY ABOUT STEADY 50-lb sacks US#1 or generally good quality Yellow unless otherwise stated CO Grano type colossal 10.00 jumbo 900 White jumbo 10.00-11.00 Red 25-lb sacks medium-large 900-10.00 ID-OR Spanish hybrids colossal 10.00 jumbo 850-900 NY Globe type small-medium 8-850 Red 25-lb sacks large 10.00-11.00.
 POTATOES ABOUT STEADY 50-lb

SPECIAL NOTICE!

Vintage Sales Stables Inc.
 (Rt. 30, 10 miles East of Lancaster in Paradise, PA)

HAY, STRAW & GRAIN SALE
 Every Thursday at 1 P.M.
 Beginning Thursday, September 8, 1988

For Info
 717-442-4181 Business
 215-458-8518 Home

L. Robert Frame Sr., President
 Glenn S. Frame, Manager

FEED INGREDIENTS

We Want To Help You Reduce Your Feed Costs

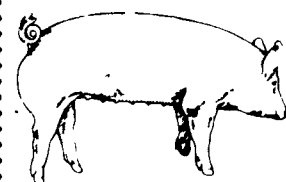
- WE SUPPLY**
- 48% SOYBEAN MEAL
 - ROASTED SOYBEANS
 - DRIED CORN DISTILLERS
 - MIXES

Call Us Today...

HERSHEY AG

(717) 653 8783
 1 800-544 4574

R D #1 Box 139
 Marietta PA 17547



EMERY'S BUYING STATION

OPEN TO RECEIVE YOUR MARKET HOGS
AT THE GREEN DRAGON MARKET
 RD 4, EPHRATA, PA 17522
 1 MILE NORTH OF EPHRATA ON NORTH STATE STREET.

HOURS: MONDAY, TUESDAY, and WEDNESDAY 7:00 A.M. to 11:30 A.M.

215-458-5677 Residence
 717-733-9648 Office

YOU ARE PAID FOR YOUR HOGS IMMEDIATELY

Ken & Lois Emery, Proprietors

EXTRA PROFITABLE WAY TO FEED CALVES					
1 MONTH	4 MONTHS	7 MONTHS	10 MONTHS	14 MONTHS	20 MONTHS
<p>Freshen faster with new Agway Gro:Right.</p>					
<p>Every calf you raise costs about \$60 a month for forage and labor. So if you could breed them at 14 months (6 months earlier than average), they'd freshen at 24 months and you'd save \$360 on each calf. Not to mention the profits from 6 extra months of milking.</p>			<p>using since 1976 to maximize calf-raising efficiency. We've added milk protein and B vitamin complex for rapid growth and efficient energy usage. So calves raised on Agway Complete Calf reach breeding weight in 14 months and join the milking string in 24 months. Save hundreds, even thousands of dollars down the road. For more information, contact your Agway Store or Farm Enterprise Salesperson.</p>		
<p>Working for people who work the land</p>					

