

**FOR RENT**

Free stall barn & milking parlor for 200 cows. Land available to rent or forages available to purchase. Registered herd of 200 cows for sale. Knowledgeable & reliable herdsman available. Lancaster Co. area.

Reply to Lancaster Farming  
PO Box 366-L-173  
Lititz, PA 17543

**\*\* 145 ACRES ML:** With extensive road frontage. 24 wooded acres and 124 tillable acres. Includes 2½ story house, bank barn, corn crib, 4 car garage, mobile home and nice pond. Northumberland County. \$250,000.

**\*\* VACANT LAND:** Snyder County. 58.5 acres with minimal road frontage but the fantastic view more than makes up for it!! \$96,500.

**\*\* QUIET RETREAT OR SOUND INVESTMENT:** 72 acres: 60% woodland, 40% farmed, with stream running through. Beautiful valley of Susquehanna Township, Snyder County. Land has .8 mile road frontage along rural route on both sides, good access. \$115,000.

**\*\* PRIVATE RETREAT:** 31 acres with 2 BR small ranch-septic and well. In Limestone Township-Mifflinburg RD #1. Includes appliances. \$69,900.

**\*\* GREAT AREA FOR HUNTING AND FISHING:** Fishing hole across the road. 2 BR cottage with appliances and furniture. On 20 acres. W. Perry Township, Snyder County. \$16,500.

**\*\* 97 ACRE BEEF FARM:** Union Co-Kelly Township. Log frame house, 2 barns and concrete stave silo. Nice 1 acre stock pond. Farm ground lays well. \$200,000.

**ERA BOWEN AGENCY, INC. REALTORS**



Selinsgrove, PA  
(717) 743-2165  
Lewisburg, PA  
717-523-3281

John Szuerra (717) 374-4284 home

**COUNTRY STORE AND GAS STATION -** Located in a small village. Currently in operation and waiting for a new owner. Also, a 6 bedroom house. Even a TV dish. 2½ acres. Check this one out - \$69,900.00. G-4436

**CAMP - JUST UPDATED -** Even has a phone and cable TV. Freshly painted 2 bedrooms and bath. Walk to Pine Creek. Excellent hunting and fishing - \$29,900.00. G-4525

**FULLY FURNISHED CAMP -** Quiet location in a pine grove. 3 bedrooms, living room with fireplace. When you own this property on approximately 1 acre, you have rights to hunt, hike, etc. on over 900 acres. - \$36,000.00. G-4418

**16 ACRES NEAR LYMAN LAKE -** West Branch of Pine Creek runs thru the property. Several building sites. Easy Access. Utilities available. Some mature woods \$16,600.00. G-4460

**UNIQUE, SPACIOUS CHALET -** On 16 acres. Living room plus a family room. 4 bedrooms. Fully insulated. Fireplace, garage and carport. Excellent location. Ideal as recreational or permanent residence. Must see to appreciate. - \$87,500.00. G-4469

**YOUR OWN PRIVATE WORLD -** When you build your camp on these 24 wooded acres. Property borders State Lands. Walk to Pine Creek. Lick Run Creek runs thru the property - \$22,000.00. G-4336



Stevens  
Real Estate

P.O. Box 94  
Gaines,  
Pennsylvania 16921  
(814) 435-6558  
(717) 724-5282



**FARM FOR SALE**

Beautiful Juniata Co. Approx. 125 acres; 87 acres in high state of cultivation; 11 acres meadow with stream; balance in woodland. Nice 2 story 9 room home. 60x34 Bank Barn plus other outbuildings. A good well of water. (This would make a good Amish farm). Will Divide. Priced At \$188,000.

**MARLIN H. FIELDS**  
REAL ESTATE  
Mifflintown, PA  
717-436-8839

**DAIRY OF DISTINCTION '87**



This is a modern dairy farm - Something to be proud of!! 338 Ac. (M/L) mostly Hagerstown Soil in high state of cultivation. The buildings are located near the middle of the land for a very convenient operation. Note: picture is lane not public hwy. Over 200 free stalls - double 4+1 milking parlor, 2000 gal. bulk tank, new barn 1985 (burned) open on 2nd floor for freedom to move equip. or bales. Many different combinations of pens by moving gates one way or another. Modern facilities for calves and an extra barn for heifers - 2 nice equip. sheds - 2 wings on main barn to separate high & low producers. Farmtronic computer system so each cow can eat accordingly to production

Includes 3 - 20x60 & 1-20x70 & 1-20x80 Blue silos. Also 2-20x60 Fickes silos all rigged up with conveyors & feed bunks to mix almost any combination from silos.

This setting is just East of a mountain range near the Maryland line in Franklin Co., Pa. (Montgomery Twp) in an intense farm community.

Sale includes 2 modern large ranch style homes in addition to the 2½ story brick farm house which is very nicely remodeled.

While it is true the drought has hit this area quite hard, the owner tells me he lived there 50 years & this is only the third dry spell of this magnitude in all those years. So think of it in terms of overall investment & give me a call today to see this "Dairy of Distinction."

**OTHER FARMS**

1. Modern 80 cow comfort stall barn on 162 Ac. of limestone soil w/2 new silos & manure lagoon & bank barn opened up for heifers, etc.
2. Nice 60 cow tie stall w/pipeline & additional 50 free stalls & three Blue silos all on 110 ac. of limestone soil - large brick house, etc.
3. Lebanon Co. - 148 Ac limestone soil w/48 tie stalls in bank barn & 22 free stalls - 4 silos - stream in meadow - stone house
4. Lebanon Co. - 180 nice level land 175 T.A - 130' wide large 2½ story brick farm house (1962) Lots of rd. frontage.
5. Near Thompsontown - 100 ac farm w/ nice 36 tie stall dairy built in '72 1½ story dwelling in good condition

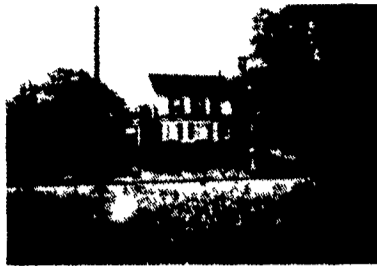
**SALE PENDING**

**MAHLON OBLERHOLTZER**  
Real Estate Agency  
Smoketown, PA 717-432-1177

**Farmland & Woodland**  
**Franklin County**



**VAN MATTER REAL ESTATE SERVICES**



Not new but beautiful 18 acres + - bank barn, 3 car garage, large shop + 25 fruit trees. 3300 sq. ft living space offers 17x20 kitchen, master bedroom on first floor, 2 full baths. Room to GROW! Call to see for \$129,900.



Less than 30 years old - quiet and secluded.

9.5 acres - shady green pastures, above ground pool, stable, shop. Retire from the farm to this farmette. Located near I-81. Walk-out basement is finished with living area, kitchen, full bath, laundry \$96,000 converts it to yours!

165 acres all wooded in Huntingdon County. Great for hunting and just getting away. Buy it today at \$99,000. New Survey.

5.12 acres - part wooded, part clear - pure nature. Park a camper or plant a cabin - 400 ft stream frontage Only \$15,000.00



121 SOUTH MAIN STREET  
MERCERSBURG, PA 17236-1517 717-328-3555

\*\*\*\*\*  
**SANFORD G. LEAMAN, REALTOR**  
717-569-4264  
Auctioneer  
ESTATES • APPRAISALS • LIQUIDATIONS  
101 White Oak Dr., Lancaster, PA 17601  
\*\*\*\*\*

**AUCTION!! AUCTION!!**  
September 15, 1988 @ 10:00 A.M.  
3 Farms Total Of 256 Acres More Or Less, 3 Excellent Homes, Free Stall And Milking Parlor Operation, Lg. Silos In Southern Lancaster County See Auction Section For Details.

**We Will Market Your Farm By Auction Or Brokerage. Call Sandy Leaman For The Best Way To Market Your Farm. Please Call On Our Toll Free Hot-line 800-528-5832 Ext. 264.**

**We're Almost Sold Out**  
We drastically need listings. We have many buyers for farms in Snyder, Union and Lanc. Counties.

**--- NEW LISTINGS ---**  
**Bedford Co.**  
96 acre beef and hog farm with 40 x60 barn and 55'x80' hog barn 2½ story 3 bedroom brick dwelling in excellent condition Call Sanford Leaman at (717) 569 4264 for further details

**We Are The Farm Professionals**  
**Columbia Co**  
96 Acre poultry farm with 2 large chicken houses, large bank barn, 2 large grain bins and complete feed grinding mill. Also 2 feed storage bins, grain-elevator leg and machine shed. Two story frame 4 bedroom home. Can be purchased as a complete unit or separately. Call Pete Zeisloft, 717-437-2305 for more details  
**Near Columbia Co.**  
Large modern, 300 acre dairy operation with double 8 milking parlor, 2 000 gal. bulk tank, 150 plus free stalls, 6 silos, large bank barn, large machine shed, 3 complete sets of buildings with nice, large modern home. A nice father and son operation. Call Pete Zeisloft at 717 437 2305 or Sandy Leaman, 717-569-4264 or 1-800-528-5832 ext 264

**Berks Co. -** 150 acre dairy farm, 100 acres tillable, mostly loam soil, 50 acres pasture with pond and stream, 51 stanchions, 3 box stalls, 40x80 heifer barn, 2 silos with unloaders, 80' bunk feeder, barn cleaner, milk house with 1,000 gallon tank, 3 car garage, 2½ story frame house with 9 rooms. Three bedrooms, 1 bath on second floor, first floor family room with fireplace, living room, dining room, modern kitchen oil hot water baseboard heat. A lot of road frontage on this farm near Fredericksburg. Call Milt Huber at 717 299 5136 or 717 569-4264

**Montour Co.**  
This weeks special Hog and beef farm with 30,000 bu grain storage, with a 12,000 Storemore natural gas dryer on top. Bank barn with additional 2 silos. 120 acre level land presently all crop land. Large brick farm house with 4 bedrooms, 2 full baths oil hot water heat, fireplace and much, much more. Priced to sell. Call Sandy Leaman at 800 528-5832, ext 264

**"We Serve Your Farm Needs"**  
Call

Fred Clark- 717-523-7201- Tioga, Bradford, Lycoming, Snyder and Union Counties  
Richard B. Crawford- 717-734-3673- Juniata, Perry and Franklin Counties.  
Milton Huber 717 299-5136- Lancaster, York, Cumberland, Franklin and Perry Counties.  
Sandy Leaman- 717-569-4264- Lancaster County and Any Other County.  
Pete Zeisloft- 717-437-2305- Columbia, Montour, Lycoming and Northumberland Counties.