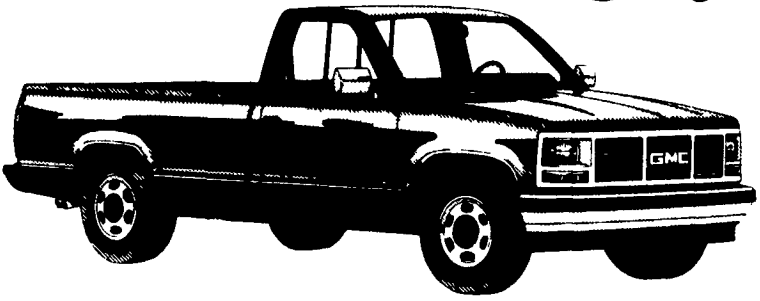


# THE RIGHT TRUCK AT THE RIGHT PRICE!



**END OF THE MONTH CLOSEOUT  
7 SIERRA'S TO CHOOSE FROM**

Starting As Low As

**\$11,300\***

## USED TRUCK SPECIALS

'80 FORD F-350 1 TON  
351 engine, 4-spd, pwr. strng.  
/brks.

**\$5,700**

'85 GMC S-15 PICKUP 4x4  
6-cyl., 5-spd., pwr. strng./brks.

**\$6,300**

'87 FORD BRONCO II  
6-cyl., auto trans., pwr.  
strng./brks., air cond., 2-tone  
paint, Under 12,000 Miles.

**\$12,900**

Tax & tags extra.

'87 CHEVY C-20  
SILVERADO 4x4  
Loaded, Only 20,000 miles.

**\$15,600**

**NOBODY ELSE COMES CLOSE**

# JONES GMC TRUCKS

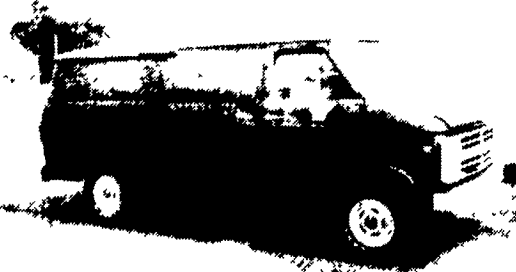
\*Includes rebates,  
excludes tax, tags  
& freight

1335 Manheim Pike Lancaster, PA (717) 394-0711



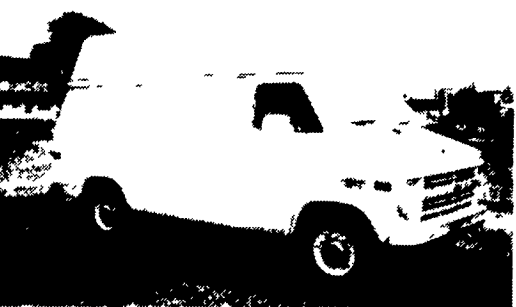
**87 DODGE B250 Maxi Cargo, New**  
318 & AT, PS, PB, 6,400 GVW  
Stock #539.

**\$9,250**



**85 CHEVY G20 CARGO 305, AT,**  
PS, PB, 6,600 GVW Stock #497.

**\$5,800**



**87 CHEV G20 CARGO With Hi-Top**  
6,600 GVW, 305, AT, PS, PB, A/C,  
Like New. Stock #544.

**\$9,550**

### FOUR WAY AUTO SALES

P.O. Box 444, R.D. #3  
New Holland, PA 17557  
(717) 354-3199

### 36 REAL ESTATE

For Sale 65 to 70 acres of Tioga Co woodland w/ stream, springs, beautiful views, excellent hunting State Game Lands only 2 miles Secluded, w/private road access  
814-628-2920

LAND FOR SALE 61 acres Lancaster Co, Rapho Twp Suitable for farming or development \$240,000 Will consider financing Call 717-665-6143 for more information

Looking for house and barn to rent for medium sized dairy herd, close to Willow Street area if possible Call 717-464-0765 or 872-7461

MORTGAGE MONEY 1st or 2nd mortgages with appraised equity Maryland, Delaware, S PA & Virginia Call 301-673 2471

Mobile home, 1971, home-ite, 12x65, 2BR, air conditioning and furniture, clean Must move Tioga Co Price negotiable 717-659 5256 after 5PM

Northern Berks County Farmers Thinking of selling your farm or sub division, let our agency help you to get the most money for your farm or land Call Blue Mountain Realty, Gertrude Haas Realtor Assoc, 215 562-7801 or 215 562 8599

Potter County In the midst of an 8 acre wood, lies a cottage built in 1981 Frame 30x40 with loft Has all the essentials plus Secluded but good access \$45,900 Harrison Twp Koch Real Estate, 107 E Main Street, Westfield, PA 16950 Phone 814-367-5380

Rent 3 bedroom, 1 1/2 bath modern farmhouse, \$425, October 1 South of Red Lion, PA Only a family who will work on owners new fruit farm for wages need apply 717-927-9502

"RUSTIC CONTEMPORARY" South Annville Twp \$250,000 Over 2700 sq ft of living space plus 1100 sq ft of finished area on the lower level, 6BR, 3 baths, stone fireplace, formal entry foyer, LR, DR, fully equipped kitchen, office, screened in porch, 2-car garage, solar heat w/wood stove backup, open beam ceilings, full stone wall in the Great room, game room, quiet country location Call Nelson Ebersole 717-867-5221 SUBURBAN REALTY FARM DIVISION, Annville, PA 17003 717-867-4487

TIoga Co-Wooded Lot \$5,000 Spring-access to private LAKE Owner Financing-Great View R Franks R E 717-724-5286

Tioga County Elegant, completely renovated, Tioga County historical home Stately New England style Could be in Good Housekeeping Magazine Rural setting, landscaped 3 1/2 acre lot includes a barn and large garage, workshop Deerfield Twp, \$125,000 Other acreage available Koch Real Estate, Westfield, PA, 16950 Phone 814-367-5380

Tioga County 2 story brick apartment and mercantile building in Knoxville Excellent Main Street location Occupied as an antique store Has 3 other tenants Idea Take over the antique store yourself, let the rental income pay the mortgage Owner financing available with reasonable down payment Price includes inventory of antiques Asking \$39,000 A real opportunity Koch Real Estate, 107 E Main Street, Westfield, PA 16950 Phone 814-367-5380

Tioga County Farmette Attractive remodeled farm house and sturdy barn on 13 acres Stocked pond, rural setting, beautiful views Great opportunity for the person interested in a small farm \$90,000 Other acreage available Brookfield Twp Koch Real Estate, 107 E Main St, Westfield, PA 16950 Phone 814-367-5380

Tioga County Pretty 7-8 acre lot in Clymer Twp Level field in front, woods in back Approx 400 ft of road frontage lined by walnut trees \$12,500 Owner financing to qualified buyer Koch Real Estate, 107 E Main St, Westfield, PA 16950 814-367-5380

WANTED TO RENT/ OPTION TO BUY Farmette w/house & barn, 30 miles from Williamsport, can need repairs 717-323-3930 Evenings

Zimmer mobile home, 14x70, 3 bedroom, 1 bath, cathedral ceiling, kitchen appliances Lived in 3 years, great condition, \$15,000 Available Dec Union Co, 717-966-1486

94 Acre farm, York County. Approx 1/2 tillable. Woodland and stream, good hunting and fishing. \$158,000 717-665-3865.

Apartment for Rent Loop Road, off 501 north Two bedroom, living room, kitchen and bath Apt newly built Spacious parking with security lighting No pets \$375 per month plus security deposit. Available June 1st 393-0646 ask for Jess or 627-2781 after 5pm, ask for Mike

BRADFORD CO DAIRY FARM All this farm needs is your dairy herd! Milking parlor, free stall housing, (2) heifer barns, (2) ponds, machine shed, tenant trailer & ranch house Call Sullivan County Real Estate for more information 717-525-3225

DAIRY FARM 260 acres Heart, NY, Finger Lakes 35 miles to Rochester, Syracuse, Ithaca 96 cow tie barn, pipeline, 4 bedroom home, 1 1/2 baths, attached garage Excellent opportunity for numerous business ventures Call for additional information, 315-539-9016

FARM FOR RENT Cortland County, NY 300 Acre, 180 tillable, 65 stanchions, fully equipped dairy farm with 5 bedroom house Call 201-463-0784

Farm, 98 acres, large modern home, beautiful view, cabin & canoeing on creek, Juniata Co \$250,000 717-527-4518, between 6 & 7 p m

FORLEASE 200 acres top quality farmland eastern shore Maryland 2" glass pipeline, 1000 gal tank, Surge equipment, 24 stanchion barn tail to tail, 80 free stalls, heifer facilities, machinery shed, 2 story farmhouse 301-754-8156

FOR RENT Dairy Farm Huntingdon County, 350 Acres, 65 Stanchions, Pipeline House, Trailer available, Silos, Buildings, available Fall 1988, P O Box 86, Tyrone, PA 16686

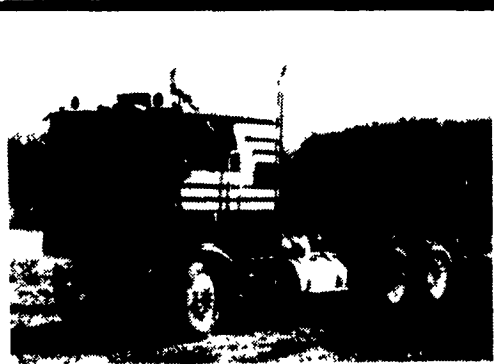
FOR RENT Flying Hills area, Berks County Six room office, 3,000 square ft warehouse Former occupant, major electrical contractor 215-775-2067

FOR SALE 100 acre farm dairy or cash crop, 70 acres tillable, balance pasture & woods, Amish neighbors and Mennonite school nearby Excellent barn & V G house, silo, Butler bin, corn crib, 2 machinery, pole buildings Wayne Co, NY \$130,000 315-923-9266

FOR SALE Dairy farm, 110 acres w/60 cow barn, tie stalls, pipeline, additional 50 free stalls w/3 silos and unloaders, heifer barn, brick and stone farmhouse Cumberland Co 717-532-5536

165 acre beef & grain farm, 150 tillable acres, large barn, silos, feed lot, grain bins, corn bins, numerous buildings, good 2 story home, \$335,000 Owner financing Southern Lycoming 717-745-7627

184 Acres of farmland for rent in West Donegal Twp Ph 717-367-3443 or submit a bid by Sept 21 to Fred B Martin, 1535 Landis Rd, Elizabethtown, PA 17022



### 1977 MARMON

3406 Cat @ 380 hp, 5000 miles since in frame overhaul, 13 spd., 4:11 rears, new front rear, new batteries, new steering tires \$12,500.

717-265-9382



### 1976 International Trk.

5 Spd. trans., 2 spd. rear, air brakes, power steering, good 10x20 rubber, 33,000 GVW, 22 ft. body, truck and body in very good condition, Asking \$4750.00.

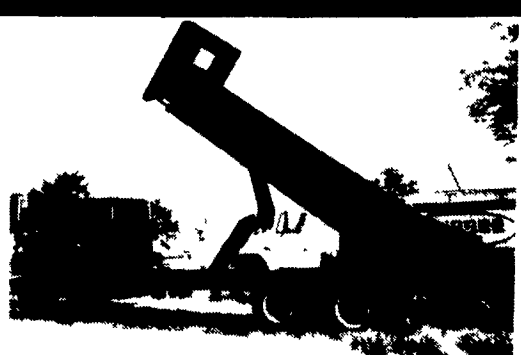
Ph. Eve. 717-786-1119



1970 International Loadstar, 21,000 GVW, 56,000 miles.

**\$7,000**

Call: 717-768-3922, ask for Ken or 717-768-8326 after 5:00



1980 Int. F-2275 Tandem Axle, 230 Cummins, 9 Spd., P/S, New 22' Dump Stake Body, Ready To Go To Work.

**\$17,500**

**Dom's International**  
Rt. 70 & Astoria Blvd.  
Cherry Hill, N.J. 08034  
**609-424-6300**

### FARMS FOR SALE

**Maryland's Eastern Shore**

**Kent Co. 233 acres, 217 tillable \$867,925**

**187 acres, 182 tillable, older farm house \$395,000**

**186 acres, 108 tillable, two 5 acre ponds, excellent hunting \$437,000**

**41 acres, 18 tillable, pond, brick rancher, \$225,000**

---

**KENT CREEK REAL ESTATE**  
Galena, MD  
**301-648-5656**