

**National Grain**

St. Joseph, MO

September 7, 1988

CASH GRAINS AND SOYBEANS CLOSED MIXED. WHEAT MARKETS FIRMER SUPPORTED BY MODERATE EXPORT TRADING AND LIGHT COUNTRY SELLING. CORN AND SOYBEAN MARKETS DECLINED AS HARVEST ACTIVITY BEGINS. CONCERN OVER CROP QUALITY AND QUANTITY PERSISTS. CORN MARKETS PRESSURED ALSO BY INDICATIONS CORN REDEMPTIONS TO INCREASE, PRESSURING PIK CERTIFICATE VALUES.

WINTER AND SPRING WHEAT HARVESTS NEARED COMPLETION. WINTER WHEAT SEEDING CONTINUED BUT WAS DELAYED IN MUCH OF THE PLAINS STATES DUE TO LACK OF MOISTURE. SPRING WHEAT HARVEST NEARED COMPLETION IN MONTANA AND IDAHO. SOME WINTER WHEAT WAS SEEDED

IN WEST-CENTRAL AND SOUTH-WEST KANSAS, BUT MOST AREAS WERE TOO DRY. IN MANY AREAS OF THE GREAT PLAINS, SEEDING HAS BEEN DELAYED DUE TO LACK OF MOISTURE. CORN WAS MOSTLY POOR TO FAIR. EIGHTY-SIX PERCENT OF THE CROP WAS DENTED. FORTY-TWO PERCENT WAS MATURE. CORN HARVEST WAS 4% FINISHED. TEXAS CORN HARVEST WAS 67% FINISHED. SOYBEANS WERE MOSTLY FAIR. POD SETTING WAS 94% FINISHED. SIXTEEN PERCENT WERE DROPPING LEAVES IN TEXAS. HARVEST WAS 18% FINISHED. SORGHUM REMAINED MOSTLY FAIR TO GOOD. SIXTY-SIX PERCENT OF THE CROP WAS TURNING COLOR AND TWENTY-EIGHT PERCENT WAS MATURE. HARVEST CONTINUED IN TEXAS.

USSR...IN WESTERN USSR, WINTER GRAIN PLANTING EXTENDED AS FAR SOUTH AS THE NORTHERN UKRAINE. CORN AND SUNFLOWER

HARVESTS WERE UNDERWAY. IN THE NEW LANDS, EAST OF THE URAL MOUNTAINS, UNSEASONABLE WARM AND MOSTLY DRY WEATHER CONTINUED, ALLOWING SPRING GRAIN HARVESTING TO PROGRESS RAPIDLY.

S. AMERICA...MOSTLY DRY WEATHER CONTINUED OVER SOUTH-CENTRAL BRAZIL AND THE MAJOR CROP AREAS OF ARGENTINA. IN ARGENTINA, LIGHT SHOWERS PROVIDED LITTLE HELP TO DRY TOPSOILS IN BUENOS AIRES, THE LEADING WHEAT-PRODUCING PROVINCE. DRYNESS PERSISTED OVER ARGENTINA'S WHEAT AREAS.

EXPORT NEWS: THE JAPANESE FOOD AGENCY BOUGHT 56,400 TONNES OF U.S. WHEAT FOR NOVEMBER. TAIWAN BOUGHT 52,000 TONNES U.S. WHEAT FOR OCTOBER SHIPMENT. JAMAICA TENDERS TODAY FOR UP TO 8,000 TONNES PL480 SOFT RED WINTER WHEAT FOR SEPTEMBER DELIVERY. U.S.S.R. BOUGHT 300,000 METRIC TONS OF CORN FOR 88/89 MARKETING YEAR

DATE CHANGE YEAR AGO 09/07/88 09/06/88 09/09/87 WHEAT: KANSAS CITY 3.95-3.99 UP 2 2.76-2.84 MINNEAPOLIS 4.31 UP 1/2 3.05 PORTLAND 4.34-4.39 UP 2-3 2.90-2.93 ST. LOUIS 3.86-3.89 NC 2.72-2.75

CORN, U.S. NO. 2 YELLOW: KANSAS CITY 2.78-2.82 DN 4-3 1.61-1.64 MINNEAPOLIS 2.71 1/2 DN 4 1.49 3/4 SO. IOWA 2.79-2.83 DN 3-4 1.55-1.58 OMAHA 2.64-2.69 DN 3 1.51-1.52

SOYBEANS, NO. 1 YELLOW: KANSAS CITY 8.78-8.86 DN 3 5.20-5.25 MINNEAPOLIS 8.61 DN 6 1/2 5.08 1/2 SO. IOWA 8.64-8.69 1/2 DN 6 5.14-5.16 C. ILL. PROCESSORS 8.89-8.95 DN 3 1/2-2 1/2 5.19 1/2-5.24 1/2

\*KANSAS CITY, US NO. 1 HARD RED WINTER WHEAT, ORDINARY PROTEIN. MINNEAPOLIS, US NO. 1 DARK NORTHERN SPRING WHEAT, 14% PROTEIN. PORTLAND, NO. 2 SOFT WHITE WHEAT, ST. LOUIS, NO. 2 SOFT RED WINTER WHEAT.

FUTURES CLOSE: KANSAS CITY (DEC) WHEAT 4.15 1/2 UP 1 1/2 2.87 3/4 MINNEAPOLIS (DEC) WHEAT 4.23 1/2 DN 1 2.84

CHICAGO (DEC) WHEAT 4.26 1/2 UP 1 1/4 2.96 1/2 (DEC) CORN 3.02 1/2 DN 2 1.73 3/4 (NOV) SOYBEANS 8.97 DN 3 1/2 5.19 1/2

EXPORT: BARGE OR RAIL, PORT OF NEW ORLEANS OR NORTH TEXAS GULF. NO.1 HARD RED WINTER WHEAT ORDINARY PROTEIN 4.36 UP 3 3.04 3/4-3.06 3/4 NO.2 SOFT RED WINTER WHEAT 4.20-4.22 UP 1-DN 3 3.02-3.04 NO.2 YELLOW CORN 3.13-3.18 DN 7-3 1.86-1.87 NO.2 YELLOW SORGHUM RAIL 5.18 DN 3

BARGE 5.11 DN 3 3.14-3.18 NO.2 YELLOW SOYBEANS 9.08-9.

**Good's Hay**

Lcola, Pa.

Wed., Sept. 7, 1988

Report Supplied by Auction

TOTAL LOADS: 103.

ALFALFA: 47.00-110.00.

MIXED HAY: 76.00-143.00.

TIMOTHY: 83.00-125.00.

CLOVER: 75.00-89.00.

OATS: 2.05-3.15 BU.

RYE: 3.25-4.05 BU.

EAR CORN: 95.00-112.00.

STRAW: 81.00-86.00.

**New Wilmington Hay**

New Wilmington, PA.

Friday, Sept. 2, 1988

Report Supplied by Auction

TOTAL LOADS: 23.

ALFALFA: MOSTLY 91.00-110.00, 2 AT 65.00 AND 135.00.

MIXED HAY: 67.50-118.00.

TIMOTHY: 1 AT 77.00.

OATS: 3 AT 2.20-2.75 BU.

ROASTED SOYBEANS: 1 AT 16.00 CWT.

EAR CORN: 14 AT 95.00-105.00, 1 AT 115.60.

STRAW: 5 AT 60.00-72.00.

**Belleville Hay**

Wednesday, Sept. 7

Belleville, PA

Report Supplied by Auction

TOTAL LOADS: 24 LDS. HAY.

ALFALFA: 77.50-142.50.

MIXED HAY: 60.00-90.00.

EAR CORN: 2 AT 112.50-117.50.

STRAW: 3 AT 60.00-70.00.

**GRAIN & LIVESTOCK HEDGING SERVICES WITH**



Jim Rohrbaugh, Account Executive  
E.F. Hutton & Company Inc  
P.O. Box 3151, Harrisburg, PA 17105  
(717) 763-1611  
(800) 822-9553 In-state  
(800) 334-3119 Out-of-state

**EXPERT REPAIRS**

- GENERATORS
- STARTERS
- ALTERNATORS
- ELECTRIC BATTERY CHARGERS



**PEQUEA BATTERIES**  
Ronks, PA



**Take Your Seat,  
The Performance Is About To Begin.**

You'll applaud the performance of Funk's G-Hybrids like G-4543, G-4626 and G-4446 when the curtain falls at harvest time.

A top choice for shelled grain or ear corn in 110 to 120-day maturity areas, G-4543 produces maximum yields even at lower populations. In Delaware hybrid field corn trials, it topped the field with 148.4 bu./A.

G-4626 has it all in a 115 to 120-day maturity hybrid—fast dry-down, outstanding stay-green, superior standability, excellent plant health and

exceptional yields. In Delaware trials, G-4626 produced yields up to 200.9 bu./A.

G-4446 delivers superior late season standability, excellent grain quality and high test weights. A multi-purpose, widely adapted hybrid, G-4446 produced a state record 252.4 bu./A. in the 1986 Pa. Five-Acre Corn Club competition.

Get your ticket to superior performance by contacting your local Hoffman sales representative or our Landisville office. Call toll free 1-800-233-0137. In PA: 1-800-732-0456.



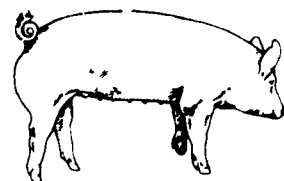
**Hoffman Seeds, Inc.**

Landisville, PA 17538



**Dependable Seeds From Dependable People**

The limitation of warranty and remedy on the tag attached to each bag of Funk's G-Hybrids and RA Hybrids is a part of the terms of sale thereof. Funk's is a brand name. Numbers identify varieties.



**EMERY'S BUYING STATION**

**OPEN TO RECEIVE YOUR MARKET HOGS**

**AT THE GREEN DRAGON MARKET  
RD 4, EPHRATA, PA 17522  
1 MILE NORTH OF EPHRATA  
ON NORTH STATE STREET.**

**HOURS: MONDAY, TUESDAY, and WEDNESDAY 7:00 A.M. to 11:30 A.M.**

215-458-5677 Residence  
717-733-9648 Office

**YOU ARE PAID FOR YOUR HOGS IMMEDIATELY**

Ken & Lois Emery, Proprietors



**ATTENTION FARMERS**

**EVERY MONDAY HATFIELD PACKING CO. and MOYER PACKING CO.**

**Will Receive Your Hogs and Cattle at the DANVILLE LIVESTOCK MARKET  
RD 4, Danville, PA**

- We will receive your hogs from 8 AM to 12 Noon every Monday. Your hogs will be weighed and paid for immediately.
- We will also accept your sows & boars.
- Your cattle will be received from 12:30 to 5 P.M. We will either pay you for your cattle immediately or you may sell them dressed weight.
- There will not be a commission or yardage fee deducted from your check.
- You may call our office Monday morning and we will be able to tell you the base price for hogs for the day.

**MELVIN M. LEHMAN - Owner  
Danville Buying Station  
Phone: 717-275-2880**