

Lancaster Co. DHIA



Monthly Report

BREED CODES

1—Ayrshire	4—Jersey	7—Red Dane
2—Guernsey	5—Brown Swiss	8—Mixed
3—Holstein	6—M. Shorthorn	9—Red and White

July, 1988

A Holstein cow owned by Nelson R. Habecker, R.D. #2, Lancaster, completed the highest 305 day lactation. 52 Produced 33,386 lbs. of milk, 1,191 lbs. of butterfat with a 3.5% test. Second high lactation was completed by a Registered Holstein cow owned by Emanuel S. Smucker, R.D. #1, Box 307, Gap. Beauty produced 28,201 lbs. of milk, 1,096 lbs. of butterfat with a 3.8% test in 305 days

FIRST 305 DAYS OF LACTATION WITH 800 OR MORE LBS. OF BUTTERFAT

Owner-Cow's Name	Brd.	Age	Days	Milk	Test
Nelson R. Habecker					
52	GrH	3-10	305	33,386	3.5 1191
31	GrH	6-1	305	23,719	3.9 946
Emanuel S Smucker					
Beauty	RH	5-1	305	28,201	3.8 1096

Earl E Martin							
Emma	RH	6-10	305	26,468	4.1	1094	
Frances	RH	4-5	305	20,790	4.3	893	
Henry U Stoltzfus Jr							
Chief	RH	4-8	305	29,237	3.7	1087	
Francis L Uhland Jr							
K42	RH	4-8	305	26,443	4.0	1060	
K35	RH	5-8	305	22,708	3.7	861	
John S Zimmerman							
60	RH	5-9	305	24,298	4.2	1036	
15	GrH	3-5	305	23,493	3.9	936	
26	GrH	2-7	305	21,261	4.1	889	
29	GrH	3-1	305	18,787	4.6	879	
6	GrH	1-10	305	23,995	3.6	872	
31	GrH	2-4	305	21,259	3.9	830	
27	GrH	2-4	300	19,423	4.2	828	
1	GrH	2-4	305	22,341	3.7	827	
Rhelda & Lynn Royer							
Frcrkr	RH	5-2	305	28,948	3.5	1027	
Graywood Farms							
471	GrH	6-8	305	23,888	4.3	1026	
96	GrH	8-0	305	22,412	3.9	881	
38	GrH	4-9	305	25,798	3.2	840	
200	GrH	4-2	305	20,446	4.1	839	
247	GrH	7-11	305	21,526	3.7	807	
163	GrH	5-7	305	19,686	4.0	805	
Dal Car Farm							
68-14	GrH	3-2	305	21,483	4.7	1018	
Samuel E Beller							
Mary	RH	6-8	305	28,539	3.5	1015	
Heather	RH	5-8	305	22,247	3.9	879	
Raymond E Reitz							
Lucy	RH	4-1	305	26,504	3.8	1008	
Lucky	RH	6-1	305	21,674	4.0	882	
Weaver Homestead Farm							
70	GrH	3-7	305	25,170	4.0	1006	
66	GrH	4-1	305	25,329	3.9	994	
85	GrH	4-8	305	26,131	3.6	950	

Lancaster Farming Saturday, September 10, 1988-D15

Nathan F Stoltzfus							
Delight	RH	5-2	305	23,655	4.2	1002	
Jennifer	RH	6-11	305	25,442	3.7	953	
Fanny	RH	4-4	305	21,067	4.3	918	
Phoebe	RH	7-11	305	23,070	3.9	917	
Violet	RH	6-1	305	21,883	3.8	841	
Diamond	RH	5-7	295	20,907	3.8	807	
Alvin Z Zeiset							
Holly	RH	4-8	290	22,810	4.3	991	
Louann	RH	3-5	305	21,178	4.4	938	
Beauty	RH	4-4	305	23,670	3.4	818	
Ammon E Reiff							
Sherry	RH	4-7	305	23,786	4.1	988	
Maud	RH	3-8	305	24,132	3.6	883	
Oak Meadow Farm							
Carol	RH	7-7	305	26,210	3.7	980	
Selma	RH	4-4	305	23,776	3.7	902	
Lassie	RH	2-11	305	20,172	4.1	828	
C Nevin Hershey							
Teresa	RH	6-5	305	26,680	3.8	979	
Weaver Bros							
Bee	RH	5-2	305	23,566	4.1	975	
Ken & Lisa Wiker							
Pepper	GrH	4-9	305	26,506	3.6	969	
Earl S Weaver							
Keesha	RH	3-11	305	25,126	3.8	969	
Tinkle	GrH	3-10	305	23,400	3.8	892	
Homer G Hess							
Becky	RH	5-0	305	25,439	3.7	959	
Dolly	GrH	8-4	305	22,446	3.9	877	
Robert Kauffman Jr							
Joan	RH	2-1	305	22,504	4.2	958	
Anabell	RH	5-8	305	25,926	3.3	880	
Running Springs Farm							
Parish	RH	4-4	305	30,965	3.0	955	

(Turn to Page D16)

Unless you want to be a fiddler on the roof, make your next one a Fabral.

When you specify and install Fabral® roofing panels for your buildings, you can avoid getting into another business—roof maintenance.

That's because Fabral panels are made of full hard 80,000 P.S.I. strength steel and are available in 36" widths. We've engineered these panels with wide flat surfaces for extra rain carrying capability and our anti-syphon side lap design makes them virtually leak proof.

Galvanized coatings on both sides give you the added edge in corrosion resistance and weather protection. Finally, each panels is specially treated with a patented finish coating to resist fading, cracking and peeling in a wide range of great looking colors.

To learn more about Fabral roofing and siding panels, give us a call. We can give you a great looking over head—and reduce your overhead at the same time!



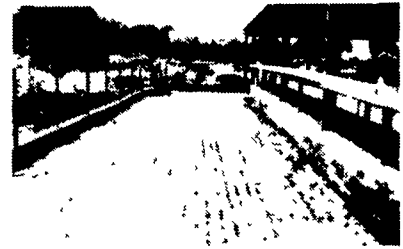
Corrosion Resistant Materials Company

P.O. Box 848
 Farmingdale, New Jersey 07727
 Toll Free 1-800-322-CRMC
 For Fast Service Phone: (201) 938-5500

SLICK CONCRETE CAN BE ROUGHENED

SCABBLING is an effective way to avoid unnecessary losses of cattle. The SCABBLER makes bands about two inches wide approximately 1/8" to 3/16 in. depth. This gives sufficient area for good footing while allowing you to scrape the smooth surface as before. It is near enough to the surface to give your cows full advantage of the roughness and deep enough to remain effective for years. It greatly aids in heat detection.

And the good news is that it is reasonably priced. You have the choice of doing it yourself or having us do it for you. We offer service right to your door. Call us for more details.



SUBURBAN RENTALS, INC.

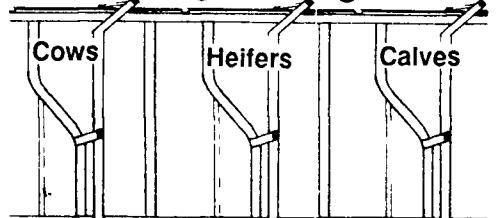
Call 800-692-0123
 We go almost anywhere

BUY DIRECT AND SAVE WE SHIP OR DELIVER ANYWHERE

Big-Strong 2 3/8" Galvanized FREE STALLS \$29⁵⁰ ea. 100 lots

Custom Made Stalls to Your Design or Ours
 Free Standing Comfort Stalls
 Quality Liquid Manure Equipment

Galvanized Self-Locking Feeding Panels



Barn Cleaner Chain \$7.95/ft Tie Stalls from \$23.95 ea

U.S. AGRI-SYSTEMS

800-222-2948
 (301-398-2948 LOCAL)