

## Key To High-Yield Corn Is Disease-Resistance Quality

DeKALB, IL. — The mid-Atlantic states, led by Pennsylvania, currently grow 2.6 million acres of corn per year to support a large dairy and growing poultry industry. A key to growing high-yielding hybrids in the East is selecting hybrids with excellent disease resistance. A disease that deserves attention is Gray leaf spot (GLS), says DeKalb-Pfizer Genetics agronomist Tom Hall. Hall notes that GLS is a definite problem in the mountain and river valleys of southeast Pennsylvania and Maryland.

Gray leaf spot overwinters on old corn stalks, which means that the conservation tillage practices most farmers use probably facilitate the occurrence of Gray leaf spot. However, Hall feels that in most cases the moisture and soil

saving advantages of conservation tillage outweigh the possible yield reduction from GLS. If a field is severely infected, then fall mold-board plowing or rotation may become necessary. However, the use of varieties tolerant to GLS, such as DK689, and rotation are adequate to offset most yield loss.

Hall warns there is currently no genetic resistance to GLS. Therefore, it is important to be on the lookout for GLS beginning about July 1. Mature foliage lesions symptomatic of Gray leaf spot are

gray to tan, long (3/4 to 2 1/2 inches), narrow (1/8 to 1/4 inch), very rectangular lesions that run parallel to the leaf veins. In severely diseased corn, the narrow lesions coalesce and blight much of the leaf surface. Severe infections are most likely to occur under wet, humid conditions.

DeKalb research is screening for genetic resistance for future hybrids, but until then, rotation and hybrids tolerant to GLS, like DK689, are the best way to handle this disease.

## Area Manager Named Soybean Market Builder

MOUNT JOY (Lancaster) — James Musser of Mount Joy has been awarded an MBA (Market Builders Award) in recognition of

outstanding service to soybean farmers of Pennsylvania by the American Soybean Association and ICI Americas.

ASA and ICI Americas strongly oppose the subsidies the European Community is using to encourage European farmers to grow oilseeds, and will work together to find applicable solutions to the problem. This is the second year that ASA and ICI Americas have worked together in building soybean markets worldwide.

ASA and ICI Americas sponsor the Market Builders Program to

## Haythornthwaite Named Karcher Vice President

WEST PATERSON, NJ — David A. Haythornthwaite has been named Vice President, Sales and Marketing by Alfred Karcher, Inc., leading producer of high pressure cleaning equipment for cold water, hot water and steam cleaning applications.

In this new capacity, Mr. Haythornthwaite will be responsible for the development of sales activities throughout the United States. Formerly, as Karcher's national sales manager, he was responsible for seven company-owned stores.

A graduate of the Arnold Grammar School, Blackpool, England, he previously managed his own company which sold and serviced agricultural equipment.



David A. Haythornthwaite

Musser has managed the M&R Grain Company elevator for 17 years, and has handled soybeans for 10 years.

"Quality is the name of the game," he said. "It doesn't matter whether you deliver your soybeans to a foreign country or to your next door neighbor."

## Wieser Named Vice President At Kubota

COMPTON, CA. — Don Wieser was recently named vice president of manufacturing at Kubota Manufacturing America (KMA), said Mr. S. Egusa, chairman of KMA and president of Kubota Tractor Corporation.

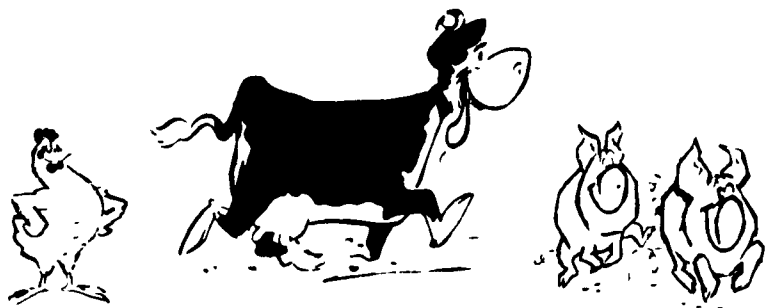
In his new position, Wieser will be responsible for all manufacturing activities at KMA's new facility in Gainesville, Georgia. Wieser previously served as senior director of distribution, purchasing and assembly at Kubota Tractor

Corporation.

Wieser joined Kubota in 1981 as national distribution manager. He was promoted to assistant director of distribution in 1983 and held that position until his promotion to director of distribution and assembly.

Prior to joining Kubota, Wieser worked for White Motor Corporation for 23 years. He currently resides in Gainesville, Georgia. Wieser was born and raised in Arlington, Nebraska.

## Now Improve The Performance Of Your Livestock or Poultry



It's a fact! High quality conditioned water can greatly improve your livestock and poultry performance. Our years of experience plus hundreds of farm related treatment systems has proven the validity and practicality of correcting contaminated water.

Call us today for treatment of  
 \* Nitrates \* Bacteria \* Iron  
 \* Sulfates \* pH - Acidity/Alkalinity



**Martin Water Conditioning Co.**

SPECIALISTS IN FARM WATER TREATMENT

548 New Holland Ave  
 Lancaster, PA 17602  
 (717) 393-3612  
 Along Rte 23



740 E. Lincoln Ave  
 Mverstown, PA 17066  
 (717) 866-7555  
 Along Rte 422

Early Morning or Evening Call 717 345-8795  
 We Serve PA & Surrounding States

Contact our Representatives in

So Chester Co., PA  
 Dick 215-932-3307

Mt Bethel, PA  
 Kevin 717-897-5141

Bradford Co., PA  
 Joel 717-274-2174

New Milford, PA  
 Joe 717-465-7506

W Lancaster Co., PA  
 Richard 717-665-7405

Belleville Pa  
 Trennis 717-935-2786

Union County, PA  
 Martin, Jr 717-966-1191

Hagerstown, Md  
 Allen 301-733-0458

Virginia  
 Ron 703-879-9958

### FRANK A. FILLIPPO, INC.

**- WANTED -**  
**DISABLED & CRIPPLED**  
**COWS, BULLS & STEERS**  
 Competitive Prices Paid  
 Slaughtered under  
 government inspection

Call: Frank Fillippo -  
 Residence - 215-666-0725  
 Elam Ginder - 717-367-3824  
 C.L. King - 717-786-7229

KEN CLUGSTON (717) 665-6775  
 VERNON SEIBEL (717) 665-2782

### CRAFT-BILT CONSTRUCTION INC.

FARM-HOME BUILDING

R.D. #2 MANHEIM, PA.

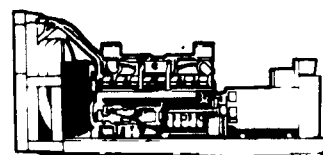
PH: (717) 665-4372

BUILDING & REMODELING FOR —

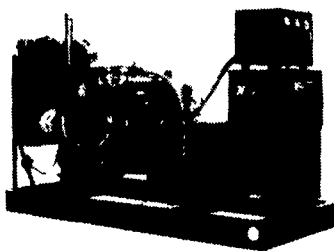
DAIRY RESIDENTIAL  
 SWINE POLE BUILDINGS  
 BEEF STORAGE



## MARTIN MACHINERY



### SPECIAL SALE



**\$6,950.00**

(While Supply Lasts)

### WINCO POWER PLANTS

- 30 KW 120/240 Volts 1 Phase
- 1800 RPM
- 225 C.U. in. Chrysler Industrial Engine
- Brushless Alternator
- A.C. Meter Panel
- Engine Guages
- Automatic Start Control Panel
- Four Light Safety Shut Down
- Main Line Circuit Breaker
- Block Heater
- Enclosure Included (Suitable For Indoor or Outdoor)

P.O. BOX 35  
 MARTINDALE, PA 17549  
 215-445-4585

RT 1 BOX 166  
 VERSAILLES, MO 65084  
 314-378-5457