



Livestock market and auction news

Northern Virginia Area Livestock

Orange, VA

August 31, 1988

SLAUGHTER HOGS 40 HEAD - NO TRENDS REPORTED. BARROWS AND GILTS US 2-4 200-250 LBS 41.00 SOWS US 1-3 300-500 LBS 30.00 500 LBS & OVER 31.00

SLAUGHTER CATTLE 141 HEAD - SLAUGHTER COWS STEADY. SLAUGHTER STEERS AND HEIFERS 15 HEAD STEERS CHOICE 2-3 1300 LBS & OVER 69.00-71.00

HEIFERS; SELECT 2-3 900-1100 LBS 62.00
SLAUGHTER COWS 120 HEAD CUTTER & BNG. UT. 1-3 42.00-51.00 BRKG.UT. & COMM. 2-4 44.00-53.00 CANNER & LOW CUTTER 1-2 36.00-42.00

SLAUGHTER BULLS 5 HEAD, 1-2 1300-1600 LBS 54.00-55.50 1-2 1600 LBS & OVER 54.00-56.00

SLAUGHTER CALVES AND VEALERS 1 VEALERS - HIGH CHOICE AND PRIME 100-250 LBS 103.00

LAMBS 15 HEAD - NO TRENDS REPORTED. HIGH CHOICE AND PRIME 95-125 LBS 57.00 SLAUGHTER RAMS ALL GRADES 24.00

FEEDER CATTLE 310 HEAD - FEEDER STEERS AND FEEDER HEIFERS STEADY. STEERS; MEDIUM 1 LARGE 1 SMALL 1 MED & LARGE 2 200-300 102.00-115.00 --- --- 300-400 92.00-105.00 --- --- 400-500 85.00-90.00 --- 83.00 --- 500-600 84.00-87.00 81.00-87.00 80.00 84.00 600-700 78.00-79.00 --- --- HOLSTEIN STEERS; MED.&LARGE 1-2 300-500 LBS 75.00; 900-1100 LBS 52.00-59.00

HEIFERS; MEDIUM 1 LARGE 1 MED.&LARGE 2 300-400 79.00-85.00 --- --- 400-500 77.00-83.00 81.00 72.00 500-600 75.00-78.00 80.00 73.00 600-700 68.00-72.00 78.00 --- FEEDER BULLS; MEDIUM 1 SMALL 1 200-300 LBS 109.00 --- 300-500 LBS 85.00-91.00 76.00-80.00 500-700 LBS 75.00-80.00 --- COWS RETURNED TO FARMS 8 HEAD, M&S-1, 6-10 YR OLD 800-900

LBS 450.00; L-1, 4-7 YR OLD 1200 LBS 630.00 PER HEAD COWS WITH CALVES AT SIDE 10 PAIR; M&S-1, 2-10 YR OLD 750-900 LBS WITH CALVES 520.00-590.00; M&L-1, 900-1100 LBS WITH CALVES 100-300 LBS 620.00-750.00 PER PAIR. BABY CALVES RETURNED TO FARMS 15 HEAD NEWBORN TO 4 WK OLD 62.00-110.00 PER HEAD. OVER 100 LBS 90.00-107.00 PER CWT.

SE & Central Virginia Area Livestock

Smithfield & Southside (Blackstone) VA

August 31, 1988

SLAUGHTER HOGS 20 HEAD - SLAUGHTER SOWS 1.00-2.00 LOWER. BARROWS AND GILTS US 2-4 200-250 LBS 43.85 SOWS US 1-3 300-500 LBS 33.10-33.50 500 LBS & OVER 32.50-34.10 BOARS 26.75-27.90 FEW LIGHT 29.00

SLAUGHTER CATTLE 110 HEAD - SLAUGHTER COWS STEADY TO 2.00 LOWER. SLAUGHTER BULLS STEADY TO 4.00 LOWER. SLAUGHTER CALVES AND VEALERS STEADY.

SLAUGHTER STEERS AND HEIFERS 10 HEAD NO PRICES QUOTED.

SLAUGHTER COWS 76 HEAD CUTTER & BNG.UT 1-3 40.00-46.25 1 AT 48.75 BRKG.UT & COMM 2-4 42.00-48.00 CANNER & LOW CUTTER 1-2 36.00-42.00

SLAUGHTER BULLS 13 HEAD, 1-2 900-1300 LBS 52.00-58.50 1-2 1300-1600 LBS 56.00-60.00 1-2 1600 LBS & OVER 55.75-61.00

SLAUGHTER CALVES AND VEALERS 11 HEAD VEALERS - HIGH CHOICE AND PRIME 100-250 LBS 92.00 GOOD AND CHOICE 100-250 LBS 85.00-91.00

FEEDER CATTLE 308 HEAD - FEEDER STEERS STEADY. FEEDER HEIFERS 3 00-4 00 HIGHER. FEEDER BULLS STEADY STEERS, MEDIUM 1 LARGE 1 SMALL 1 300-400 --- 84.00-98.00 --- 400-500 86.00-93.50 92.00 73.00-84.00 500 600 84.00-86.50 68.00-77.00 --- 600-700 80.50-83.50 86.50

--- 700-800 75.00-76.75 --- --- HEIFERS; MEDIUM 1 SMALL 1 MED.&LARGE 2 300-400 79.00-90.00 73.00-73.50 72.00 80.00 400-500 78.00-86.50 --- 72.00-75.00 500-600 80.00-83.50 --- 70.00-76.00 600-700 72.00-72.50 --- FEEDER BULLS, MED 1 SMALL 1 MED & LARGE 2 200-300 LBS 93.00-112.00 --- --- 300-500 LBS 79.00-94.50 78.00-83.00 67.00-85.00 500-700 LBS 70.00-84.50 63.00-72.00 67.00-72.00 700-900 LBS 58.00-59.00 --- --- 900-1000 LBS 53.00 --- COWS RETURNED TO FARMS 10 HEAD, M&L-1, 7-9 YR OLD 800-950 LBS 42.00-52.00 PER CWT. COWS WITH CALVES AT SIDE 14 PAIR; M&L-1, 4-7 YR OLD 800-1100 LBS 56.00-75.00 PER PAIR M-2, 4-7 YR OLD WITH CALVES 220 LBS 62.00 PER PAIR BABY CALVES RETURNED TO FARMS 40 HEAD NEWBORN TO 4 WK OLD 45.00-85.00 1 AT 115.00 PER HEAD. OVER 100 LBS 74.00-112.00 PER CWT.

SW Virginia Area Livestock

Wytville, VA

August 30, 1988

SLAUGHTER HOGS 6 HEAD - NO TRENDS ESTABLISHED SOWS US 1-3 300-500 LBS 32.00-32.50 500 LBS & OVER 33.50-34.00 BOARS 22.00

SLAUGHTER CATTLE 123 HEAD - SLAUGHTER COWS STEADY TO 1.00 LOWER

SLAUGHTER COWS 109 HEAD CUTTER & BNG.UT. 1-3 42.00-47.25 BRKG.UT. & COMM. 2-4 43.00-46.50 CANNER & LOW CUTTER 1-2 38.00-42.75

SLAUGHTER BULLS 14 HEAD, 1-2 900-1300 LBS 55.00-63.00 1-2 1300-1600 LBS 50.00-54.75 1-2 1600 & OVER 54.00-58.75

LAMBS 184 HEAD - SLAUGHTER LAMBS 3 30 HIGHER. HIGH CHOICE AND PRIME 95-125 LBS SPRING 57.30 CHOICE 85-125 LBS. 56.75 FEEDER LAMBS CHOICE AND FANCY 70-85 LBS 58.00 SLAUGHTER EWES ALL GRADES 12.00-16.75 12 GOATS

13 00-36.00 PER HEAD. FEEDER CATTLE 447 HEAD - FEEDER STEERS STEADY TO 1.00 HIGHER. FEEDER HEIFERS STEADY TO 1.00 LOWER. STEERS, MEDIUM 1 LARGE 1 SMALL 1 MED & LARGE 2 200-300 94.00-117.00 --- --- 87.00-92.00 300-400 85.00-91.00 88.00-93.00 80.00-85.00 80.00-86.00 400-500 85.00-90.00 89.00-96.00 75.00-82.00 84.00-86.00 500-600 84.00-87.00 84.00-86.00 74.00-77.00 77.00-82.00 600-700 78.00-83.00 82.00-84.00 78.00 75.00-79.00 700-800 74.00-78.00 --- --- 69.00-70.50 800-900 71.00-74.50 --- --- 900-1100 65.00-68.00 --- --- HOLSTEIN STEERS, MED & LARGE 1-2 300-500 LBS 73.50-84.00, 500-700 LBS 69.50-74.50 700-900 LBS 60.00-64.00, 900-1100 LBS 59.00

HEIFERS; MEDIUM 1 LARGE 1 SMALL 1 MED.&LARGE 2 200-300 87.50-93.50 94.00-96.00 --- --- 300-400 79.00-88.00 77.00-87.00 70.00-75.00 72.00-76.00 400-500 76.00-80.00 77.00-82.50 70.00-76.00 72.00-79.00 500-600 75.00-78.50 --- 70.00-73.00 67.00-69.50 600-700 73.00-76.50 73.75 --- 68.00 700-800 65.00-70.75 --- --- 800-900 64.75-67.50 --- --- FEEDER BULLS; MED 1 MED & LARGE 2 200-300 LBS 84.00-92.00 --- 300-500 LBS 80.00-90.00 75.00-80.00 500-700 LBS --- 70.00-77.00 COWS RETURNED TO FARMS 20 HEAD; M&L-1, 4-7 YR OLD 800-1050 LBS 45.50-50.00 PER CWT COWS WITH CALVES AT SIDE 3 PAIR, M&L-2, 4-8 YR OLD 900-1075 LBS WITH CALVES 80-95 LBS 540.00-600.00 PER PAIR BABY CALVES RETURNED TO FARMS 47 HEAD NEWBORN TO 4 WK OLD 25.00-100.00 MOSTLY 55.00-85.00 PER HEAD

Shenandoah Valley Livestock

Harrisonburg, Va.

Sat., August 27, 1988

Report supplied by auction

FEEDER CATTLE TREND: MOSTLY STEADY TO \$4 HIGHER. STEERS M&L-1 300-500 LBS 93.00-94.00, 500-700 LBS 80.00-84.00; 700-1000 LBS 68.00-81.00; HOLSTEIN 500-1000 LBS 60.00-63.00. S-L&M&L-2 300-500 LBS 76.00-85.00; 500-700 LBS 75.00-84.00, 700-1000 LBS 65.00-73.00.

FEEDER BULLS: M&L-1 300-500 LBS 85.00-93.00; 500-700 LBS M&L-1 81.00

HEIFERS: M&L-1 300-500 LBS. 74.00-83.00; 500-700 LBS. 79.00-81.50; 700-1800 LBS. 69.00-75.00. S-L&M&L-2 300-500 LBS. 73.00; 500-700 LBS. 64.00-73.00.

STOCK COWS: BEEF: 500.00-695.00; BABY CALVES: 25.00-125.00.

SLAUGHTER COWS TEND: \$2-3.50 LOWER. UTILITY & COMMERCIAL 2-4 38.00-45.50; CANNER & CUTTERS 1-3 35.00-39.00.

SLAUGHTER BULLS: 1&2 50.00-58.50.

LAMBS: TREND \$2-3 HIGHER. BLUE O HIGH CHOICE & PRIME 57.55; RED O CHOICE 61.55; FEEDER LAMBS CHOICE 65.80-68.00; SLAUGHTER EWES 18.00-22.00.

HOGS: US 1-3 200-240 LBS. 43.75; SOWS 1-3 28.00-33.00; BOARS 25.50.

VEALS: CHOICE & PRIME 95.00, GOOD 77.00-85.00.

Frederick Livestock Sales

Frederick, Md.

Monday, Aug. 29, 1988

Report Supplied by Auction

BUTCHER COWS: GOOD 47.00-48.50; STANDARD & UTILITY 43.00-46.00; CANNERS 39.00-42.00; SHELLY 39.00 DOWN.

BULLS: GOOD 55.00-60.00; MEDIUM 52.00-55.00.

HEIFERS: GOOD 54.00-58.50; MEDIUM 48.00-53.00.

BUTCHER HOGS: 210-230 LBS. 44.00-45.50; 240-260 LBS. 44.00-45.00; 270-290 LBS. 42.00-43.00.

SOWS: 300-600 LBS. 32.00-34.75; THIN 28.00-31.00.

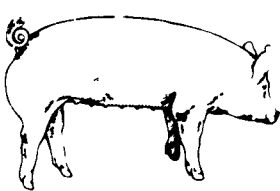
VEAL CALVES: GOOD 91.00-99.00, STANDARD 81.00-90.00; STOCKY & THIN 75.00-80.00; LIGHT CALVES 80-100 LBS. 88.00-94.00, 60-80 LBS 75.00-85.00.

CALVES RETURNING TO FARM HOLSTEIN HEIFERS 90-120 LBS 90.00-94.00; HOLSTEIN BULLS 95-100 LBS. 110.00-125.00, 105-120 LBS. 125.00-136.00.

LAMBS: GOOD & LOW CHOICE 53.00-54.00; MEDIUM 51.00-57.00.

STOCK CATTLE: STEERS GOOD 500-700 LBS 67.00-71.50, MEDIUM 500-700 LBS. 63.00-66.00, HEIFERS GOOD 500-700 LBS. 59.00-65.00, MEDIUM 55.00-58.00, BULLS GOOD 300-500 LBS. 80.00-90.00, 600-700 LBS 61.00-64.00, SPRINGING HEIFERS 510.00-675.00, OPEN 300-500 LBS 65.00-85.00.

PIGS & SHOATS: BY THE HEAD- 30-60 LBS. 11.00-24.00, 1 LOT 138 LBS AT 37.50 (BY THE LB).



EMERY'S BUYING STATION

OPEN TO RECEIVE YOUR MARKET HOGS

AT THE GREEN DRAGON MARKET RD 4, EPHRATA, PA 17522 1 MILE NORTH OF EPHRATA ON NORTH STATE STREET.

HOURS: MONDAY, TUESDAY, and WEDNESDAY 7:00 A.M. to 11:30 A.M.

215-458-5677 Residence
717-733-9648 Office

YOU ARE PAID FOR YOUR HOGS IMMEDIATELY

Ken & Lois Emery, Proprietors

CRIPPLED AND DISABLED

Cows, Steers & Bulls For Slaughter Under USDA Inspection

Call Wayne Taylor

**717-866-6289
215-286-9400**

Lebanon, Berks, Lancaster & Chester Counties

KING'S AUCTION KIRKWOOD

Hay, Straw and Grain Auction

EVERY TUESDAY

12:00

Located Rt. 472.5 miles south of Quarryville or 8 miles north of Oxford corner of Rt. 472 and Noble Road at Rouse Tobacco Station.

Lloyd H. Kreider, Auctioneer AU-000513L

No out of state checks ALL TRUCKERS AND FARMERS WELCOME

FOR SALE

New, never used 1988 aluminum possum belly 48' Eby cattle or hog trailer, double deck rails, decks front & rear. Trailer has aluminum Budd wheels, 24.5 radial tires.

Call evenings
215-458-8518

SWINE PRODUCTION SALES AND SERVICE

Feeding Programs And Services To Meet Your Individual Needs

Computerized Record Keeping System



Supplying Farm Fresh Feeder Pigs

Marketing and Hedging Services

Marketing of Genesis Breeding Stock

Contracts Available

Developing Individual Financial Programs

Quality Products And Services - Working For YOU

419 West High Street
Elizabethtown, PA 17022

Elizabethtown
(717) 367-1525

PA Toll Free
1-800-468-5524

Shippensburg
(717) 532-7845

OUR BUSINESS IS SERVICE TO FARMERS

Let us help you build a successful marketing program!

Call:
**717-761-2740
800-382-1356**



Grains & Livestock

• Forward Contracting • Hedging Services

CFS PFA COMMODITY FUTURES SERVICE, INC.