

## Public Auction Register

Closing Date Monday 5:00 P.M.  
of each week's publication

SUN. SEPT. 4 - Gun Show & Consignment Sale. Blue Mt. Hall, Rt. 183, S. Summit Station, Sch. Co., PA. 717-754-7464.

MON. SEPT. 5 - 8:30AM Consignment Sale of Tractors & Eq. From 181 S. of Martinsburg, WV, take Exit #5 (Inwood), WV Rt. 51 E. approx. 3 1/2 mi. to Shutts Cash Grocery (Formerly Haines) turn R., 2 of mi to sale. Edgar A. Bohrer, Sale Mgr.

MON. SEPT. 5 - 9AM Antiques & Collectibles, HH, etc. 1/4 mi. E. of Dalmatia, PA, & Rt. 147, along Dalmatia to Hickory Corners Rd.

For Frances Long, Dockey, Dockey, Deppen, Auctions.

MON. SEPT. 5 - 9AM Consignment Auction of Farm Eq & Related Items American Corner, MD, on Hwy Rt. 621 between Denton & Federalsburg, MD. A Curtis Andrew Auction, Inc.

MON. SEPT. 5 - 10AM Annual Labor Day Consignment Auction of Farm Eq. Located Highway 621 American Corner, MD, between Denton & Federalsburg. A Curtis Andrew Auction, Inc.

MON. SEPT. 5 - 10AM 87 Acre Real Estate, HH, Antiques, Gun, etc 3 mi. N. of

Lairdsville, PA, along Huddy Hill Rd. Lycoming Co Clara Soisson Fraley Auct. Co.

MON. SEPT. 5 - 4:30PM Antiques, Tin, Old Toys, Furniture, Glass & China, Clocks, Dolls, etc 2 mi. S. of Mountville, Manor Street, just off Central Manor Rd. Lanc. Co. Central Manor Auct.

TUES. SEPT. 6 - 6:30PM Winross Auction including Rajah Temple, Myers propane, Friend in PA, etc Ertl Banks, Ertl Trucks, etc At Country Table Restaurant on Rt. 230, Mt. Joy, PA. Ziegler Auct. Co.

WED. SEPT. 7 - 9AM Tools, Hdw., etc. At Good's Auction, 111 North Maple Avenue, Leola, PA.

WED. SEPT. 7 - 7PM 100 Cows & Fall Heifers, 20 Open Heifers For: Graves Farm Inc., Wm E Graves, Conway, Mass At Peila Bros. Sale Barn, Cross Street, Bernardston, Mass A. From Int. 91, 28 southbound and 28B northbound to Rt. 10 S. to Rt 5 S. 1/2 mi to Cross St. on left. Bruce Whittier, Auct.

## MIFFLIN COUNTY DAIRY FARM

100 Tillable Acres - Near Juniata River at Mattawana - Stone House - Dairy Facilities - Available for fall planting and occupancy - To inspect, call Administrator at night or Lawyer during day.

If farm is not sold meanwhile, it will be offered with the farm machinery at 1:00 P.M. on Friday, October 7, 1988. WATCH THIS NEWSPAPER FOR LISTING OF MACHINERY.

Charles W. Kenep, Administrator  
d.b.n.c.t.a.  
717-899-7460

R. Lee Ziegler, Lawyer  
717-248-1121

## LABOR DAY CONSIGNMENT AUCTION FARM EQUIPMENT & RELATED ITEMS

MONDAY, SEPT. 5, 1988

9 A.M. Rain or Shine

Located at the Auction Barn In American Corner, Maryland on Highway Rt. 621 between Denton & Federalsburg, MD.

Receiving Equipment on Friday, Sept. 2, Saturday, Sept. 3 and until sale time on Monday. Forklift & loading ramp available.

For more information and to advertise your equipment call today.

Terms: Cash or approved check with letter from bank guaranteeing funds day of sale.

A. Curtis Andrew Auction, Inc.  
Auctioneers: Curtis Andrew,  
Mike Roe, CAI 301-479-0756  
or 301-754-8826  
Members Maryland & National  
Auctioneers Association

## ESTATE AUCTION OF SAW MILL EQUIPMENT SEPTEMBER 17, 1988

9:30

Located at the John Steyer Farm 18 miles south of Somerset or 6 mile East of Normalville. 2 mile off Rt. 653. Turn off route 281 at New Lexington or off Rt. 711 at Normalville and follow the sale signs.

### SAWMILL EQUIPMENT TRUCKS - LOADERS

**SKIDDERS AND LOADERS:** 1985 Pack a Back Franklin 170. Self contained unit, loader, hauler, with blade, long tail with Jake Brake and loader in cab - with 453 Detroit, standard transmission, in good condition; Franklin Log Skidder 132L with blade; Franklin Log Skidder with blade, older model; 1700 Timberjack, automatic shift, articulated loader 4 wheel drive; trogan 4 wheel drive loader; International 250 B Crawler Loader.

**TRUCKS:** 1978 9000 Ford Diesel Tractor, Tandem Axle in good condition; Jake Brake with 10 speed with 5 speed line reduction; 40 ft. Ravens aluminum flat Trailer, tandem axle; 1974 900 Ford Tri Axle with log bed and mounted J.D. log Loader; 1980 Totem Tag along Lo-Boy Trailer 3 axle 12 ton capacity; 1979 Ford Bronco with 351 engine in good condition; 1977 Ford 250 Pickup with 4 door crew cab; Ford 150 pickup with crew cab, selling as is; IH Tri Axle Truck with Prentice Log Loader, has been used as a stationary unit.

### SAW MILLS AND EQUIPMENT

Some of this equipment is at different locations and must be inspected prior to sale and will be sold at the John Steyer Farm. FRICK SAW MILL located 3 miles off Route 40 on the Dinner Bell Road near Farmington. - Frick 1-C automatic with 318 Detroit Diesel Power Plant for cut-off Saw and Live Rolls. Mill was recently damaged by Fire. (Sells as a unit) FRICK O SAW MILL - located 5 miles East of Connellsville. Turn off Rt. 711 on Mt. Tabor Road, 2 miles to mill site.

Lot Number 1 - Frick Saw Mill Complete with live deck - Log Turner, edger, cut-off 20' carriage and GM 671 Detroit Diesel.

Lot Number 2 - Same location - Empire EM-16 Morbark DeBarker; Various Saw Mill Parts for above mills; Final drives for IH250-B. Farquhar - Saw mill knocked down, short, some parts. Selling at sale site. Bros. Heavy Duty Snow Blower with 6 cylinder Industrial Engine, Logger chains, Pack-a-Back Chains; Chains, binders, Cable; Belts; Large selection of Hydraulic Hose and fittings; Saw mill blades; cut off blades; Several Power Saws; Stihl and Husqvarna and many other misc and related items.

Due to the recent death of her husband, Mrs. Steyer will liquidate the above listed at public auction. Plan to attend this large liquidation of Sawmills and Equipment. Contact owners for inspection and location.

Lunch Served

TERMS: CASH OR CHECK WITH PROPER I.D.

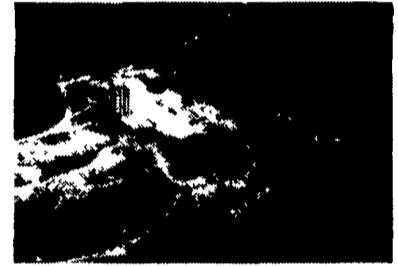
Owner:

MRS. JOHN STEYER

R.D. 1, Mill Run,  
Phone 412-455-3328

Auctioneers: Luce, Luce and Svonavec

## PUBLIC AUCTION



### OF HAPPY DAY FARMS

3 FARMS, 256 ACRES MORE OR LESS TOTAL  
THURS., SEPTEMBER 15, 1988

at 10:00 A.M.

LOCATION: FARM #1 SPRING VALLEY RD., EAST DRUMORE TWP., LANCASTER COUNTY, PA.

DIRECTIONS: APPROX. 3 MI. SOUTH OF THE BUCK AND TURN LEFT ON SPRING VALLEY RD. 1.2 MI. TO FARM ON LEFT.

### FARM #1 CONSISTS OF:

The main dairy facilities which include a large bank barn with several additions. There are 140 free stalls, calf, heifer and maternity pens, holding area. Veterinary and breeding facilities, double 4 Bou-Matic milking equipment with automatic take-offs, Mueller stainless steel 1,250 gal. bulk milk tank, grain and feed bins. There are 3 Fickes silo's with patz unloaders. 1-14'x70', 1-20'x80' and 1-30'x80'. There are 2-10 ton feed bins. Stationary mixer as well as a 30,000 lbs. Seale. There is a shop, garage, implement sheds and corn barns. Farm #1 will be offered first and with all other farms and land collectively.

The home is a 2 1/2 story aluminum sided 3 bedroom home. There is a brick fireplace w/heatolator in the living room, wall to wall carpet in most rooms, eat-in kitchen w/family room, den and laundry or mud room. There is a basement rec room. There is a large unique master bedroom with an attached glass cubicle room for sleeping under the stars. Excellent well and septic system.

### FARM #2 CONSISTS OF:

A large T-shaped bank barn, corn barn and implement shed. Barn is presently used for young stock. There is a 14'x70' silo w/unloader over 3,300', road frontage, well and septic system and stream.

There is a large 2 1/2 story slate roofed house with asbestos siding, 4 lovely bedrooms, large living room, dining room, eat-in kitchen w/breakfast bar, family room, carpeting, full basement as well as large laundry-freezer room. This house is heated w/oil hot water heat, porches and lots of old shade. Farm #2 will be offered individually as well as with Farms #1 and 3.

### FARM #3 CONSISTS OF:

Approx. 70 acres of land. Included is approx. 5A woodland, 2± acres pasture land with stream. Buildings consist of a bank barn with sloped roof and freestall area presently used for heifers and dry cows. There is a 16'x60' stave silo with vandale unloader.

House is a 2 1/2 story aluminum sided, 4 bedroom and bath home presently rented. Home has central heat, eat-in kitchen, living room, dining room, summer house or laundry area. This farm is nestled among large shade trees along a quiet country road. This farm will be offered separately as 70A M/L and as approx. 30A M/L as well as with the balance of Farm #1 and Farm #2.

TERMS: 10% down, balance on or before April 1st. Call auctioneer for terms of owner financing.

Ed Miller- Atty.

FOOD STAND

717-569-4264

717-569-4264

SANFORD G. LEAMAN AUCTION SERVICE  
LIC. # AU-532-L  
LICENSED & BONDED

SALE BY:

JOHN H. & DARLIS K.,  
DAVID H. & BETTY JANE and  
JAY P. & NELLENE K. MYER

For apt. to see farm, call auctioneer:

717-569-4264 or

1-800-528-5832, ext. 264