

**Philly Fruit Market**

August 31, 1988

**PARTLY CLOUDY 59-75.**  
**GRAPEFRUIT CA** ctn Red 27s 17.00 32s 16.50 few hgr 36s 16.00 40s 13.00-14.50 48s 11.00-12.50 Choice 23s 12.50 27-32s 14.50 36s 11.00- 11.50 mos 11.00 40-48s 9.00-11.00.  
**LEMONS CA** ctn 95-115s 30.00 140s 26.00 165s 23.50-24.00 Choice 95- 115s 18.50-19.00 140s 16.50-17.00 mos 16.50 165s 16.00-16.50 200s 16.75 std 115s 16.50 140s 16.00 165s 13.50 FL ctn 95s 16.50 115s 17.50-20.00 140s 16.00-18.00 165s 15.50-17.00 200s few 16.00 Choice 95s 14.00 140-165s 13.00 200s 11.00.  
**LIMES SLIGHTLY LOWER** Persian Seedless 10-lb ctn unless otherwise stated FL 42-63s 5-5.50 38-lb ctn 160s 13.00-14.00 MEXICO 48s 4.50-5.00 54s few 5.50-6.00 63s 4.50-5.00.  
**ORANGES CA** ctn Valencia 48s 11.50 56-72s 14.00 14.50 88s 14.00-14.50 few 15.00 113s 12.25-13.50 138s few 12.50 Choice 48s 10.00 56s 10.50 few 11.00 72s 10.50-11.00 few 11.50 88s 11.50 few 12.00-12.50 113s 11.50 138s 10.00- 10.50 few 12.00.  
**APPLES ABOUT STEADY** CONTROLLED ATMOSPHERE STORAGE ctn tray pack WA Golden Delicious WAExFcy 88s 22.00-25.00 100s 20.00 113s 16.50 125s 15.50 NEW CROP ctn tray pack WA Red Delicious USFcy 88-100s 27.00 CA Granny Smith USFcy 88-100s 25.00 113s 23.00 ctn cell pack NY Tydemman USFcy 120s 12.00 few lwr ctn 12 3 lb film bags 2-1/4" min VA Golden Delicious USFcy 12.50 NY USFcy Tydemman 10.00 Jersey Mac 8.00 loose no grade mark NJ 3/4 buert Paula Red no sz mark 5.00 8.00  
**AVOCADOS SUPPLIES LIGHT** CA 2-lyr ctn Hass 40s 44.00 48s 44.00 46.00 60s few 46.00-47.00  
**BANANAS IMPORIS** ctn approx 40-lb 9.00 fair qual 7-7.50 film wrpd 9.00 INS TI TUTIONAL PACK PHILITE 150s 11.00  
**BLUEBERRIES SUPPLIES LIGHT** 12-1 pt flats film overwrpd MI med lgc 18.00-20.00  
**GRAPES-TABLE SLIGHTLY LOW-** ER CA 23-lb lug Thompson Seedless 10.00-12.00 mos 10.00 few 13.00 one label few 15.00 sml 8.00-9.00 mos 8.00 fair cond 4.00-7.00 Flame Seedless 14.00-16.00 sml 12.00-13.50 fair cond 6.00-10.00 Superior Seedless fair appear 9.00 Exotic 13.00 14.00 22-lb lug film bags Thompson Seedless sml 8.00-9.00.  
**KIWIFRUIT NEW ZEALAND** 1 lyr flat 30-39s 9-9.50  
**MANGOS SUPPLIES LIGHT** MEX ICO ctn Keitt 9s 8.00 10s fair cond 4.00-5.00 12s 8.00 fair cond 4.00-5.00 14s fair cond 4.00-5.00  
**NECTARINES ABOUT STEADY** CA 25-lb lug Royal Giant 56 sz 9.75-10.50 64 sz 9.75-10.50 few 12.00 72 sz 9.75-11.00 80 sz 9.75-10.50 Flamekist 48-50 sz fair appear 7.00-8.00 56 sz 10.00 fair appear 8.50-9.00 64 sz 10.00-10.50 fair appear 8.50- 9.00 72-80 sz 10.00 fair appear 8.50-9.00 PA 25-lb ctn Flavortop 2-2-1/2" fair cond 2-2.50

**PAPAYAS HAWAII** Too few sales to quote.  
**PEACHES SLIGHTLY LOWER** 38-lb ctn various Yellow Flesh varieties up sizes US#1 extra unless otherwise stated NJ including no grade mark 2-1/2" 11.00-12.00 mos 12.00 one label high as 15.00 2-1/4" 9.00-10.00 mos 10.00 few 12.00 fair appear low as 8.00 2" min 6.00 no sz or grade mark fair qual 5.50-6.50 VA 2-1/2" ord cond 5.00  
**PEARS ABOUT STEADY** CA 4/5 buctn wrpd Bartlett US#1 80-90s 28.00 100s 26.00 110s 22.00 120s 18.50 135s 16.50 Bosc US#1 100s 26.50 110s 25.00 36-lb ctn Bartlett US#1 90 sz 20.00 100 sz 18.00 110 sz 17.00 120 sz 14.00-15.00 135 sz 12.50 WA 4/5 buctn wrpd US#1 Bartlett 90s 24.50-27.00 100s 22.50-25.00 110s 20.50-22.00 120s 18.50-20.00 135s 17.00 Red Bartlett 110s 25.00.  
**PINEAPPLES SUPPLIES LIGHT** HAWAII ctn via air 6-7s 12.00 COSTA RICA 2-lyr ctn 10-14s one label 20.00  
**PLUMS ABOUT STEADY** CA 28-lb ctn Frrar 2x3x3 sz 19.00 fair cond 17.00-18.00 Casselman 3x4 sz 20.00 3x4x4 sz 16.50 4x4 sz 16.50 one lot 20.00 3x4x5 sz one lot 18.50 4x5 sz 14.50 Angeleno 2x3 & 2x3x3 sz 26.00 2x3x4 sz few 28.00 3x4 sz 24.00 few 27.00 Linda Rosa 4x4 sz few 17.00 Late Santa Rosa 3x4x4 sz 21.00 4x4 sz 20.00 18.00 ID 28 lb ctn Catalina US#1 4x4 sz 12.00 US#2 3x3 sz 15.50 3x4 sz 13.50 4x4 sz 10.00 Simka US#2 3x4 sz 13.00 4x4 sz 10.00  
**PRUNES TOO HIGH** SALES TO QUOTE  
**RASPBERRIES SUPPLIES HIGH** 12 1/2 pint flats film overwrpd CA one label 18.00 via air 12.00 15.00 WA via air 16.00 18.00  
**STRAWBERRIES SUPPLIES HIGH** CA 12 1 pt flats med/med lgc 13.80 15.00 poor cond 2.00 via air sml med fair qual 10.00  
**CANTALOUPE CA** 1/2 ctn 9s 9.00 12s 9.00 10.50 15s 10.50 11.50 mos 11.00 18s 11.00 11.50 mos 11.00 NJ 1 lyr ctn 6s fair qual 5.00 6.00 fair cond low as 3.00  
**HONEYDEWS ABOUT STEADY** CA 2/3 ctn 4s 5.00 6.00 some 4.00 5s 5.00 6.50 6s 5.00 7.00 mos 6.00 7.00 Orange flesh 6s fair cond 6.00  
**MISC MELONS ABOUT STEADY** CA 2/3 ctn Crenshaw 4s & 6 8s few 9.00 Casaba 5s few 9.00 Juan Canary 4 5s & 8s few 9.00 Persian 4-5s few 9.00  
**WATERMELONS ABOUT STEADY** Average weight per melon NJ Crimson Sweet 22-lb 2-2.25 20 lb 2.00 18 lb 75 1.00 Jubilee 20 lb 1.50 DI Jubilee 35-lb few 4.50-5.00 32 lb few 4.45 50 Crim son Sweet 22-lb 2.25 18 lb 75 1.00 TX Jubilee 40 lb 5.50 per bin NJ & DF Crim son Sweet 60-65 count fair qual 35.00 ctn per lb MEXICO Jubilee 2-3s 14 15 cents

**NJ Fruit FOB (Seasonal)**

August 31, 1988  
 PARTLY CLOUDY 56 78  
 SOUTH NEW JERSEY Sales fob shipping point basis PEACHES Demand moderate Market about steady 38 lb carton

hydrocooled U.S. Extra One & some no grade mark various yellow flesh varieties mostly Blake, Cresthaven, Biscoe & Red-skin Wide range in color. 3-1/4 inch one brand few 18.00 2-3/4 inch up 13.00-15.00 few 16.00 2 1/2-2 3/4 inch including 2 1/2 inch & up 11.50-13.00 mostly 12.00 some 14.00-15.00 one brand 16.00 2 1/4-2 1/2 inch including 2 1/4 inch & up 9.00-11.00 mostly 10.00 few 12.00-13.00 2-2 1/4 inch 5.00 6.00 few 7.00-8.00

**Shippensburg Produce Auction**

(717) 530-1700  
 Shippensburg, PA  
 Average Prices Of #1 Produce August 25-31  
 Open Daily 11:00 a.m. Except Sunday  
 Report Supplied by Auction  
 APPLES: 2.50-3.75 1/4 BU.  
 CABBAGE: 4.50-6.50 50 LBS.  
 CANTALOUPE: .55-.85 EA.  
 CORN: (WHIITE) 1.65-2.25 DOZ; (YELLOW) 1.50-2.00 DOZ.  
 CUCUMBERS: 3.50-4.50 1/4 BU.  
 EGGPLANT: 3.00-4.75 1/4 BU.  
 LIMA BEANS: 10.00-13.50 1/4 BU.  
 NECTARINES: 5.00-10.00 1/4 BU.  
 PEACHES: 3.75-5.00 1/4 BU.  
 PEARS: 4.00-6.00 1/4 BU.  
 PEPPERS: LG. 6.00-10.50 BU; MD. 4.00-7.50 BU.  
 PICKLES: 4.00-6.00 1/4 BU.  
 PLUMS: 4.00-7.00 1/4 BU  
 POTATOES: 4.00-5.00 50 LBS  
 PUMPKINS: 4.0-2.50 EA  
 STRING BEANS: 8.00-12.50 1/4 BU  
 TOMATOES LG. 8.50-16.00 25 LB  
 BOX, MD 6.00-13.50 25 LB. BOX.  
 WATERMELON LG VAR 50-2.75 EA, SM. VAR 35-90 EA  
 ZUCCHINI 5.00-10.00 1/4 BU

**Dewart Livestock Auction**

Dewart, PA  
 August 29, 1988  
 CATTLE 144 PDA Compared with last Monday's market Slaughter cows mostly steady to \$2 lower Few Standard & Select sl steers 59.50-65.75 Two Choice sl heifers 65.00, two Choice holsteins 62.00&63.00 Breaking Utility & Commer-

cial sl. cows 45.00-48.75, one 55.00, Low yielding down to 42.00, Cutter & Bon. Utility 44.00-46.75, few 48.00, Canner & Low Cutter 37.00-43.00, few to 44.00, Shells down to 30.00. One Yield Grade No 1, 1490 lbs. sl. bulls 57.50, two No 2 1265/1405 lbs 55.00&55.50 Two Medium Frame No 1, 335/385 lbs steers 83.00&85.00 Few Medium Frame No. 1-2, 375/730 lbs bulls 61.00-77.00  
 CALVES 198. One Choice vealers 98.00, few Good 70.00-87, Standard & Good 90/125 lbs. 80.00-95.00, 70/85 lbs 70.00-83.00, few Standard 140/225 lbs 60.00-76, Utility 60/80 lbs. 50.00-70.00 Farm Calves: Holstein Bulls 80/130 lbs 93.00-159.00; few Hol. Heifers 95/130 lbs. 96.00-110.00 Beef cross bulls & heifers 80/255 lbs. 83.00-105.00.

HOGS 34...Few Lots US No. 1-3 210/230 lbs. barrows and gilts 46.10-46.85, few 2-3 220/255 lbs. 44.25-45.75, 1-3 125/185 lbs. 41.50-45.00. Few US No. 1-3 325/440 lbs. sows 34.50-35.00, few 2-3 410/645 lbs. 31.50-32.75. One Boar 27.25.  
 FEEDER PIGS 124...US No 1-3 20/35 lbs. feeder pigs 20.00-24.00, one lot 12.00, 1-3 35/50 lbs 24.00-30.00 --- all per head  
 SHEEP 7. Few Choice 75/105 lbs spring slaughter lambs 54.00-58.00 One Slaughter sheep 10.00  
 GOATS 1. One Large 62.00 - per head

**Morrison Cove Livestock**

Martinsburg, Pa.  
 Monday, August 29, 1988  
 Report supplied by auction  
 CATTLE 203  
 STEERS. HIGH CHOICE & PRIME 68.00-70.25; CHOICE 65.50-67.25, GOOD 61.00-64.75, STANDARD 46.50-58.50 HEIFERS- CHOICE 61.00-65.75, GOOD- 52.50-60.50 COWS- UTILITY & COMMERCIAL- 48.60-52.75, CUTTERS 46.25-49.50, CANNER & LOW CUTTER- 33.50-45.75 BULLOCKS- GOOD & CHOICE 61.00-63.75. BULLS- YIELD GRADE #1 52.50-61.00 FEEDER CATTLE- STEERS, GOOD 76.50-96.00, STANDARD 58.00-69.50, BULLS, GOOD 75.00-92.50, STANDARD 54.00-68.00, HEIFERS, GOOD 75.00-86.50, STANDARD 56.00-64.50.  
 CALVES. 335 PRIME 102.00-106.50,

CHOICE 98.00-101.00; GOOD 94.00-97.50; STANDARD & GOOD 79.00-89.50, 90-110 LBS. 84.50-96.00, 65-90 LBS. 74.00-88.50; HOLST BULL CALVES, 90-130 LBS. 102.50-145.50, HOLST. HEIFER CALVES, 90-130 LBS 91.00-104.50.  
 HOGS: 73. US#1-2 46.50-47.25; US#1-3 45.50-46.00; SOWS US#1-3 31.00-37.25; BOARS 28.00-32.75.  
 FEEDER PIGS: 105. US#1-3 20-35 LBS. PER HD. 11.00-17.50; 1-3 35-50 LBS PER HD. 20.00-24.50.  
 SHEEP: 35. CHOICE LAMBS 56.00-60.00; GOOD 50.00-54.50, SLAUGHTER EWES 18.00-34.50  
 GOATS- PER HD. 15.00-62.50

**Grantsville Livestock**

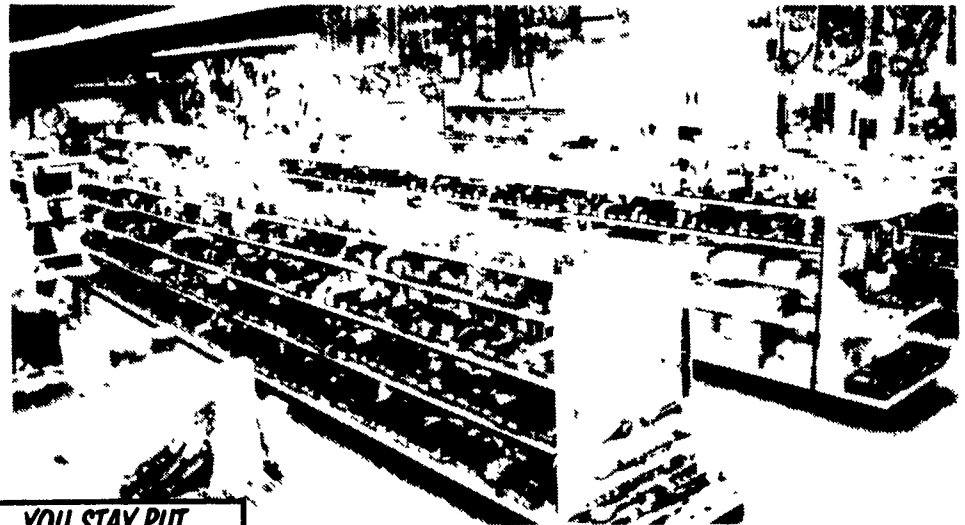
Grantsville, Maryland  
 Saturday, Aug. 23, 1988  
 HOGS TOP BARROWS & GILTS 46.00-47.50; HEAVY BUTCHER 44.00-47.00; LIGHT BUTCHER 35.00-46.00; BUTCHER SOWS 28.00-36.00; FEEDER SHOATS 10.00-28.50  
 VEAL GOOD 90.00-95.00; STANDARD 80.00-85.00, UTILITY 60.00-70.00, BULL CALVES 100.00-135.00  
 SHEEP & LAMBS. GOOD 55.00-62.00; UTILITY 50.00-53.00, SLAUGHTER EWES 18.00-24.00  
 SLAUGHTER CATTLE. STEERS- GOOD 65.00-68.50; STANDARD 60.00-62.00, UTILITY 55.00-58.00  
 HEIFERS GOOD 60.00-66.00, STANDARD 55.00-58.00; UTILITY 48.00-52.00  
 COWS COMMERCIAL 42.00-48.50, UTILITY 38.00-40.00, CANNER & CUTTER 30.00-35.00  
 BULLS. COMMERCIAL & GOOD 58.00-62.50, CUTTER & UTILITY 52.00-55.00.  
 STOCK-FEEDER CATTLE GOOD 80.00-90.00, MEDIUM 60.00-75.00  
 STEER CALVES GOOD 85.00-105.00, MEDIUM 62.00-77.50  
 HEIFER CALVES GOOD 70.00-85.00, MEDIUM 55.00-60.00

C.B. HOOPER & SON, INC.  
 Intercourse, PA  
 (717) 768-8231

HOOPER EQUIPMENT, INC.  
 Middletown, DE  
 (302) 378-9555

TWO LOCATIONS  
*The Saving Place*

**WE SHIP PARTS DAILY**  
 VIA UPS - PPSH - BUS - AIR FREIGHT, ETC.



**YOU STAY PUT**  
 Pick Up Your Phone And Place Your Parts Order With Us

**HOURS**  
 Mon.-Fri. 7 AM-5 PM; Sat. 7 AM-Noon

**CALL US...**  
*It Could Be We Have It*

**case**  
 Authorized UPS Station

**GSI Grain Systems Incorporated**

**TOP DRY**

**THE TOP DRY DIFFERENCE!**

- 540 TO 2100 BUSHEL BATCH CAPACITY
- 18' THRU 36' DIAMETERS
- USES GRAVITY AS AN ENERGY SOURCE
- DOUBLES AS A STORAGE BIN
- IT'S AFFORDABLE!
- EASY TO OPERATE
- LOW MAINTENANCE

PATENT No. 4,137,882  
 4,480,534

We Have Been Selling, Installing And Servicing This Very Dependable Type Of Drying System For 15 Years. Contact Us For Free Quotation.

**LOUCKS GRAIN EQUIPMENT INC.**  
 R.D. #12, Box 307  
 York, PA. 17406  
 717-755-2868