

National Grain Market

Aug. 24, 1988
 CASH GRAINS AND SOYBEANS HIGHER. COUNTRY SELLING LIGHT. EXPORT DEMAND FIRM, ESPECIALLY FOR CORN AND SORGHUM AS A RESULT OF SALES TO MEXICO. SOY-BEAN PROCESSORS CONTINUE TO BID AGGRESSIVELY FOR LIMITED SUPPLY OF SOYBEANS.

EXPORT NEWS: EGYPT BOUGHT 63,000 TONNES U.S. EXPORT BONUS SOFT WHITE WHEAT FOR OCTOBER. TUNISIA UNDER PL480 BOUGHT 65,500 TONNES OF NO. 2 OR BETTER SOFT RED WINTER WHEAT. NORTH YEMEN TENDERS TODAY FOR ABOUT 32,000 TONNES OF U.S. NO. 2 OR BETTER WESTERN WHITE WHEAT UNDER PL480 FOR SEPT SHIPMENT. MEXICO BOUGHT 180,000 TONNES OF U.S. NO. 2 YELLOW GRAIN SORGHUM FOR SEPT SHIPMENT. SOUTH KOREA'S FEED ASSOCIATION BOUGHT 50,000 TONNES OF U.S. NO. 3 YELLOW CORN FOR NOV/DEC SHIPMENT. TAIWAN BOUGHT 56,000 TONNES U.S. NO. 2 YELLOW CORN FOR OCT/NOV SHIPMENT. TAIWAN BOUGHT 33,000 TONNES U.S. SOYBEANS FOR SEPT/OCT SHIPMENT.

DATE CHANGE YEAR AGO 08/24/88 08/23/88 08/26/87 WHEAT: KANSAS CITY 3.75-3.78 UP 2-3 2.71-2.73 MINNEAPOLIS 4.24 DN 4 3.04 1/2 PORTLAND 4.16-4.18 UP 3 2.83-2.88 ST. LOUIS 3.71-3.74 UP 5 2.61-2.65

CORN, U.S. NO. 2 YELLOW: KANSAS CITY 2.65-2.74 UP 10-13 1.60-1.65 MINNEAPOLIS 2.63 3/4 UP 8 1.49 3/4 SO. IOWA 2.70-2.74 UP 7 1.58-1.61 OMAHA 2.55-2.60 UP 12-11 1.51-1.54 SOYBEANS, NO. 1 YELLOW: KANSAS CITY 8.29-8.34 UP 28 5.19-5.27 MINNEAPOLIS 8.20 UP 25 1/2 5.09 3/4 SO. IOWA 8.23-8.29 UP 25-26 1/2 5.21-5.23 1/2 C. ILL. PROCESSORS 8.35-8.46 UP 26 1/2 5.23-5.32

*KANSAS CITY, US NO. 1 HARD RED WINTER WHEAT, ORDINARY PROTEIN. MINNEAPOLIS, US NO. 1 DARK NORTHERN SPRING WHEAT, 14% PROTEIN. PORTLAND, NO. 2 SOFT WHITE WHEAT, ST. LOUIS, NO. 2 SOFT RED WINTER WHEAT.

FUTURES CLOSE: KANSAS CITY (SEP) WHEAT 3.83 UP 2 1/4 2.73 1/2 MINNEAPOLIS (SEP) WHEAT 4.03 UP 1 2.69 1/2 CHICAGO (SEP) WHEAT 3.90 3/4 UP 4 3/4 2.77 3/4 (SEP) CORN 2 (NOV) SOYBEANS 8.45 UP 26 1/2 5.15 1/4 EXPORT: BARGE OR RAIL, PORT OF NEW ORLEANS OR NORTH TEXAS GULF. NO.1 HARD RED WINTER WHEAT ORDINARY PROTEIN 4.11 UP 3 1/4 2.98 1/2 NO.2 SOFT RED WINTER WHEAT 3.99-4.00 UP 3-4 2.83 1/2-2.86 NO.2 YELLOW CORN 3.03-3.04 UP 11-9 1.81 3/4-1.87 NO.2 YELLOW SORGHUM RAIL 5.00 UP 29 BARGE 5.12 UP 20 3.09-3.13 NO.2 YELLOW SOYBEANS 8.61-8.62 UP 29-22 5.53.

New Holland Hay

New Holland, Pa.
 Monday, August 22, 1988
 Report Supplied by Auction
 TOTAL LOADS: 137.
 ALFALFA: 71.00-130.00, 1 AT 150.00.
 MIXED HAY: 69.00-130.00.,
 TIMOTHY: 88.00-140.00, 1 AT 161.00.
 ORCHARD GRASS: 58.00-126.00.
 CLOVER: 86.00-100.00.
 OATS: 3.00-3.55 BU.
 RYE: 3.80-4.05 BU.
 EAR CORN: 86.00-126.00.
 STRAW: 50.00-90.00.

Dewart Hay

Dewart, Pa.
 Monday, August 22, 1988
 Report Supplied by Auction
 TOTAL LOADS: 6 LDS. HAY,
 41.00-99.00.
 STRAW 2 AT 55.00 & 71.00.
 WOOD 3 AT 21.00-31.00.

Westminster Hay

Westminster, Md.
 Tuesday, Aug. 23, 1988
 Report Supplied by Auction
 TOTAL LOADS: 16.
 ALFALFA HAY: 1ST CUTTING, 91.00, 2ND CUTTING, 2.20 BALE.
 TIMOTHY REAL FANCY, 2.40 BALE, 1.00-1.50 BALE
 ORCHARD GRASS. 1.15 BALE.
 CLOVER HAY: 2ND CUTTING, 107.00
 GRASS HAY: 1.70 BALE.
 STRAW WHEAT: 90-1.05 BALE;
 OAT 61.00

Leinbach's Hay

Shippensburg, PA
 Aug. 20 & 23
 Report supplied by Auction
 TOTAL LOADS: 29
 ALFALFA: 84.00-132.00.
 MIXED HAY: 71.00-100.00
 TIMOTHY: 88.00-105.00.
 CLOVER: 93.00.
 BROME GRASS: 80.00-92.50.
 OATS: 2.45 BU.
 RYE: 3.50 BU.
 EAR CORN: 130.00-136.00
 STRAW: 46.00-62.50

Keister's Hay

Middleburg, PA
 Tuesday, Aug. 23
 Report supplied by auction
 TOTAL LOADS: 18 LDS. HAY.
 ALFALFA: 80.00-112.50.
 MIXED HAY: 52.50-115.00.
 TIMOTHY: 1 AT 92.50.
 RYE: 2 AT 3.00 & 3.75 BU
 OATS 2 60 BU.
 EAR CORN: 10 AT 102.50-140.00
 STRAW 2 AT 62.50 & 65.00.

New Wilmington Hay

New Wilmington, PA.
 Friday, Aug. 19, 1988
 Report Supplied by Auction
 TOTAL LOADS: 29.
 ALFALFA 100.00-172.50, 2 AT 74.00 AND 84.00
 MIXED HAY: MOSTLY 65.00-85.00, 1 AT 125.00, 2 AT 39.00 & 55.00
 TIMOTHY: 69.00-97.50
 OATS 1 AT 2.90 BU.
 EAR CORN: 5 AT 100.00-125.00
 GRASS. 1 AT 47.50.
 STRAW: 2 AT 75.00 & 89.00

North Jersey Market

Hackettstown, N.J.
 Tues., Aug. 23, 1988
 Hay—Straw & Grain Report
 ALFALFA HAY 2.10 BALE
 MIXED 2.00-2.20
 TIMOTHY HAY 1.85.
 GRASS HAY 2.00.
 TOTAL: 6

Good's Hay

Leola, Pa.
 Wed., Aug. 24, 1988
 Report Supplied by Auction
 TOTAL LOADS: 64.
 ALFALFA: 88.00-119.00.
 TIMOTHY: 77.00-134.00.
 MIXED HAY: 65.00-125.00.
 CORN: 100.00-122.00.
 STRAW: 67.00-82.00.
 OATS: 3.50 BU.

Valley Livestock

Athens, Pa.
 Monday, Aug. 22, 1988
 Report supplied by auction
 HOLSTEIN HFR. CALVES TO 125.00.
 VEAL CALVES TO 94.00.
 VEALER BULL CALVES TO 150.00
 SLAUGHTER CALVES 70.00-85.00.
 GRASSERS & FEEDERS 40.00-65.00
 LAMBS 50.00-60.00.
 SHEEP 15.00-26.00.
 HOGS, 200 TO 250 LBS 38.00-46.50
 SOWS 30.00-39.00.
 BOARS 24.00-34.50.
 PIGS 10.00-29.00 EA.
 HEIFERS 45.00-54.00
 STEERS, HOLSTEIN TO 50.00.
 STEERS, FEEDER 55.00-70.00.
 BULLS 48.00-61.50.
 COWS, GOOD 46.00-49.00
 COWS, TOP 50.50
 COWS, MEDIUM 44.00-47.00.

COWS, POOR OR SMALL 32.00-40.00.
 CATTLE MARKET STEADY
 CALF MARKET ACTIVE TO HIGHER.
 HORSES TO 300.00 EA.
 GOATS TO 43.00.
 REMARKS: 423 CALVES, 159 COWS, LOTS OF OTHER LIVESTOCK.
 FEEDER SALE 1ST MONDAY OF EACH MONTH. DAIRY SALE 3RD THURSDAY OF EACH MONTH.

Keister's Middleburg Auction

Middleburg, PA
 August 23, 1988
 CATTLE 416.. REPORT SUPPLIED BY THE AUCTION ...High Choice & Prime slaughter steers 70.00-73.60, Choice 66.00-72.50, Select 64.00-66.25, Standard 60-66.25; Choice holsteins 62-67.75, Select 58-61.75, Standard 55.00-57.75. Choice sl. heifers 65.00-71.50, Select 60.00-64.75, Standard 55.00-59.75, Utility 50.00-54.75. Breaking Utility & Commercial sl. cows 46.00-49.75, few 51.50, Cutter & Boning Utility 44.00-48.75, Canner & Low Cutter 40.00-44, Shells down to 35.00. Choice sl. bullocks 64.00-67, Select 58.00-63.75. Yield Grade No. 1, 1200/2020 lbs. sl. bulls 61.25-63.50, No. 2 800/1200 lbs. 52.00-58.75. Feeder Cattle: ALL WEIGHTS 350/750 LBS ... Steers 63.00-78.00; Heifers 55.00-72.50; Bulls 55.00-75.00.
 CALVES 188...Choice vealers 85.00-100.00, Prime 116.00, Standard and Good 90/110 lbs. 92.00-100.00, 60/90 lbs. 75.00-90.00. Farm Calves: Holstein Bulls 90/125 lbs. 110.00-148.00; Hol. Heifers 90/120 lbs. 100.00-115.00.
 HOGS 577.. US No. 1, 215/235 lbs. barrows and gilts 48.00-49.25, 1-2 210/245 lbs. 47.00-48, 2-3 200/250 lbs. 46.00-47, 2-4 190/270 lbs. 43.00-46.00. US No. 1-3 270/650 lbs. sows 31.00-35.00, few light weights 37.00, 2-3 270/770 lbs 26.00-31.00. Boars 27.00-32.75.
 FEEDER PIGS 581...US No. 1-3 20/40 lbs. feeder pigs 12.00-28.00, 1-3 40/60 lbs 22.00-33.00 --- all per head.
 SHEEP 30...Choice 80/110 lbs. spring slaughter lambs 55.00-62.00, few springers 35/45 lbs. 70.00-80.00, Good 50/80 lbs. 45.00-65.00. Slaughter ewes 18.00-28.00
 GOATS 0... No Market Test.

ATTENTION FARMERS

The New Way To Market Your Livestock
HATFIELD AND MOYER
PACKING CO. AND PACKING CO.
 Will Receive Hogs Will Receive Cattle

At The
BLAIR-BEDFORD
BUYING STATION
 RD 1 Martinsburg, Pa

MONDAYS - Hogs 7:30 AM to 12 Noon
 Cattle & Calves 7:30 AM to 4 PM

THURSDAYS - Cattle & Calves
 7:30 AM to 4 PM

- No commission or yardage fees deducted from check
- Livestock weighed and paid for immediately
- You may call our office sale day for prices

DALE R. HOOVER - Owner
 Business 814-793-3077
 Residence 814-793-2657

CRIPPLED AND DISABLED

Cows, Steers & Bulls
For Slaughter Under
USDA Inspection

—Call Wayne Taylor—
717-866-6289
215-286-9400

Lebanon, Berks,
 Lancaster & Chester
 Counties



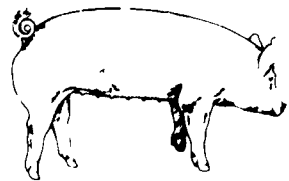
ATTENTION FARMERS

EVERY MONDAY
HATFIELD PACKING CO. and
MOYER PACKING CO.

Will Receive Your
 Hogs and Cattle at the
DANVILLE LIVESTOCK MARKET
 RD 4, Danville, PA

- We will receive your hogs from 8 AM to 12 Noon every Monday. Your hogs will be weighed and paid for immediately.
- We will also accept your sows & boars
- Your cattle will be received from 12:30 to 5 P M We will either pay you for your cattle immediately or you may sell them dressed weight
- There will not be a commission or yardage fee deducted from your check
- You may call our office Monday morning and we will be able to tell you the base price for hogs for the day

MELVIN M. LEHMAN - Owner
 Danville Buying Station
Phone: 717-275-2880



EMERY'S
BUYING
STATION

OPEN TO RECEIVE
YOUR MARKET HOGS

AT THE GREEN DRAGON MARKET
RD 4, EPHRATA, PA. 17522
1 MILE NORTH OF EPHRATA
ON NORTH STATE STREET.

HOURS: MONDAY, TUESDAY, and
WEDNESDAY 7:00 A.M. to 11:30 A.M.

215-458-5677 Residence
 717-733-9648 Office

YOU ARE PAID FOR YOUR
HOGS IMMEDIATELY

Ken & Lois Emery, Proprietors

GRAIN & LIVESTOCK
HEDGING SERVICES
WITH
E.F. Hutton

Jim Rohrbaugh, Account Executive
 E.F. Hutton & Company Inc
 P.O. Box 3151, Harrisburg, PA 17105
 (717) 763-1611
 (800) 822-9553 In-state
 (800) 334-3119 Out-of-state

OUR BUSINESS IS
SERVICE TO FARMERS
 Let us help you build a
successful marketing program!

Call:
717-761-2740
800-382-1356



Grains & Livestock

- Forward Contracting
- Hedging Services

CFS PFA COMMODITY FUTURES SERVICE, INC.