

District Eastern Shore Champion Holstein Show

BY SUE CROW

Maryland Correspondent
CENTREVILLE, Md. — The District Show for Cecil, Kent, Queen Annes, Caroline and the other Eastern Shore counties was held in Queen Anne's County 4-H Park in Centreville. The sweltering heat which accompanied the county fair the week before had finally subsided and it was an enjoyable day in the show pavilion.

For the Skinner family it was a day to celebrate as they captured the laurels for both the open and 4-H classes. Brother and sister J.R. and Dawn were in the ring together for the final placings. Dr. James McCaffree; from Galantry Holsteins, Delta, Pa. had the task of judging the animals. Dawn's senior calf, Donside Dudley Angela, took the junior champion ribbon in both open and 4-H. The junior yearling, Chestnuts Valiant Jasmine, owned by Paige Davis came home with the reserve spot for both shows.

J.R.'s junior 2-year-old took the senior and grand champion rosette for the 4-H show. Donside Shirly also took the reserve senior and reserve grand champion trophy for the Open Show. The senior 3-year-old from Pintail Point took the honors of senior and grand champion with Elvira Tony Evelyn-et.

In the fitting and showing classes there were some new faces. In the novice, first year showman, Katie Dixon took first place with Melinda Jackson placing second. In the juniors it was Charles Patterson taking the top spot and Greg Knutsen receiving first in the intermediate class. Paige Davis from Cecil County took home the top spot for the seniors and the champion of the ring in fitting and showmanship.

A complete listing of the placing for the open and 4-H shows

follows:

- Maryland District 4-H and OPEN SHOW RESULTS**
- Junior Heifer Calf**
1 Charles Dean, III (4-H), 2 Audra Debnam (4 H), 3 Pintail Point Farm
- Intermediate Heifer Calf**
1 Charles Dean, III (4 H), 2 Gregg Knutsen (4 H), 3 Schraders Dairy
- Senior Heifer Calf**
1 Dawn Skinner (4 H), 2 Pintail Point Farm 3 Auda Debnam (4 H)
- Summer Yearling Heifer**
1 Dawn Skinner (4 H), 2 Fair Hill Farm, 3 Katie Dixon (4 H)
- Junior Yearling Heifer**
1 Paige Davis (4 H), 2 Pintail Point Farm, 3 Lisa Reinhold (4 H)
- Intermediate Senior Yearling**
1 Fair Hill Farm 2 Jeff Norton, 3 Charles Patterson IV
- Senior Yearling Heifer**
1 Bruce Schrader (4 H) 2 J R Skinner 3 Bret Dulin (4 H)
- Junior Champion Female**
Dawn Skinner Donside Dudley Angela (4 H)
- Reserve Junior Champion Female**
Paige Davis Chestnuts Valiant Jasmine (4 H)
- Junior Best Three Females**
1 Dawn and J R Skinner
- Junior 2 Year Old Cow**
1 J R Skinner (4 H), 2 N Jill Edwards (4 H)
- Senior 2 Year Old Cow**
1 Pintail Point Farm, 2 Wm F Schrader, Jr., 3 Brian Schrader (4 H)
- 3 Year Old Cow**
1 Karen Knutsen 2 N Jill Edwards (4 H) 3 Greg Knutsen (4 H)
- 4 Year Old Cow**
1 Pintail Point Farm 2 Lesley Davis
- 5 Year Old Cow**
1 Lovdal Farm, 2 Fair Hill Farm 3 Dix Lee Farm
- Dry Cow, 4 Years And Under**
1 Pintail Point Farm, 2 Schraders Dairy
- Dry Cow, 5 Years And Under**
1 Pintail Point Farm 2 Lovdal Farm
- Long Time Production**
1 Audra Debnam
- Senior Champion**
J R Skinner Donside Shirly Pintail Point Farm Elvira Tony Evelyn et
- Reserve Senior Champion**
Karen Knutsen Lovdal Lynnack Finesse (4 H)
- Grand Champion**
J R Skinner Donside Shirly
- Reserve Grand Champion**
J F Skinner Donside Shirly (4 H) Pintail Point Farm Elvira Tony Evelyn et
- Reserve Grand Champion**
Karen Knutsen Lovdal Lynnack Finesse (4 H)
- Produce of Dam**
1 Lovdal Farm, 2 Donside Farm
- Dam and Daughter**
1 Chestnut Lane Farm, 2 Pintail Point Farm
- Senior Best Three Females**
1 Lovdal Farm



J. R. Skinner exhibited the District Eastern Shore Show grand champion (right) and Karen Knutsen took the reserve spot. Show judge Dr. James McCaffree made the selection.

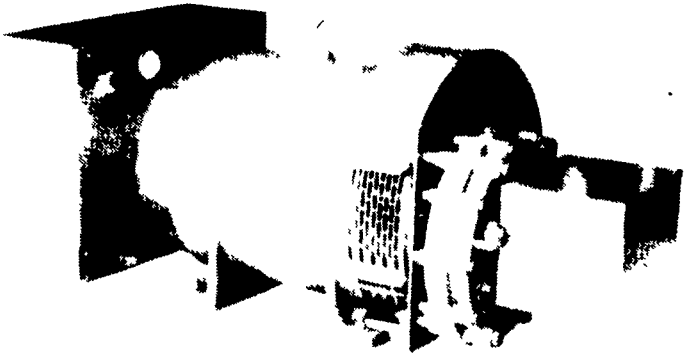


In the open competition, show judge, Dr. James McCaffree, tapped J. R. Skinner (left) for the reserve grand champion title and Ryan Johnson (right) is at the halter for Pintail Point Farm for the grand championship in the District Eastern Shore Show.

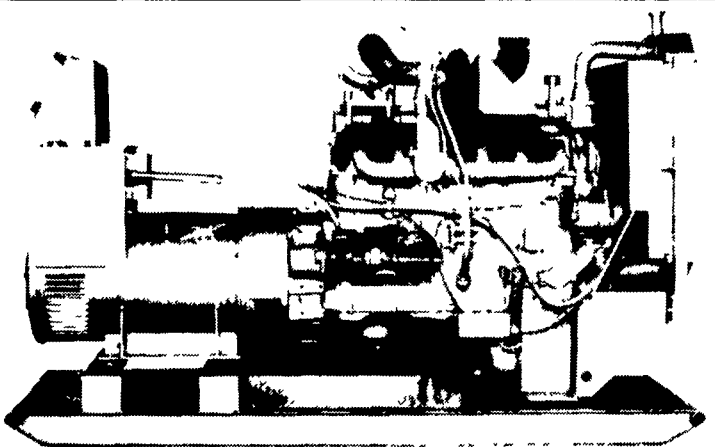
**READ
LANCASTER FARMING
FOR COMPLETE
AND UP-TO-DATE
MARKET REPORTS**



STANDBY GENERATORS



PTO Driven



Automatic Systems

LEONARD MARTIN COMPANY

330 Fonderwhite Rd. Lebanon, PA 17042
24 Hr Service (717) 273-4544 Radio Dispatch

AGRI-INC.

Custom Built Farm Buildings
Designed To Your Needs

Specializing In Dairy Systems:

- Dairy Complexes And Replacement Stock Facilities
- Horse Stall Barns And Riding Arenas
- Workshop And Machinery Storage Buildings
- Timber Column Buildings For Light Commercial

Let Our Experience Work For You -
CALL NOW



AGRI-INC. Designers And Builders

RD 4 Ephrata PA 17522 • (717) 354 4271

Serving The Agricultural Industry For Over 20 Years

