

Northern Lebanon FFA

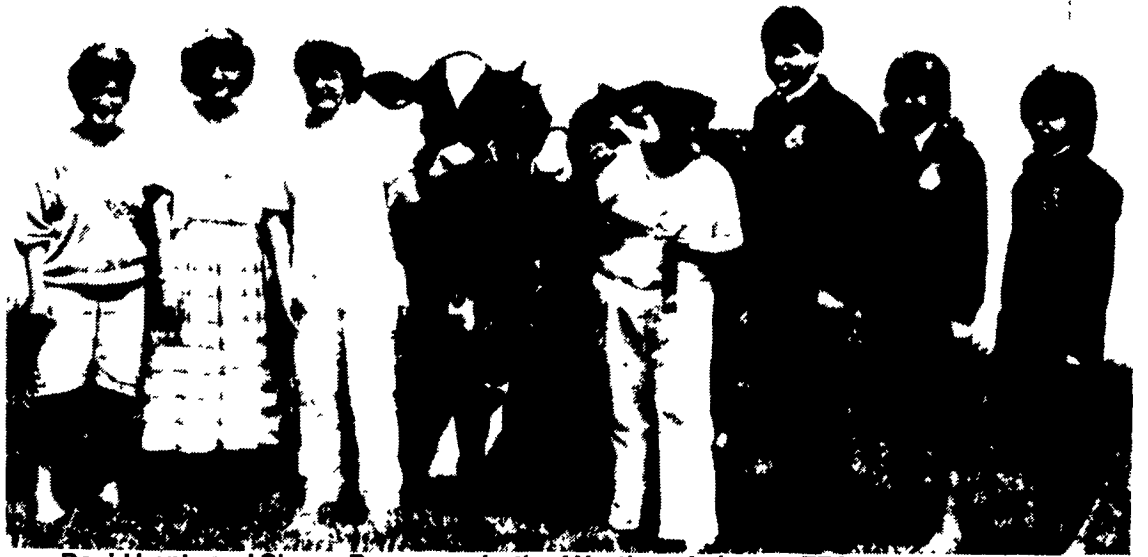
(Continued from Page D14)

Marge's strength and pronounced advantage in the dairy system especially in the Holstein. The reserve senior champion went to Randy Balthaser of Carlisle, Windmill Blason Gilda from the Hamburg FFA.

However, for the reserve grand champion, show judge Myers tapped the growthy junior champion noting the animal's set of good feet and legs. Michael Kunkle of Northern Lebanon FFA exhibited

the junior champion Shady Creek J D Starbright into the reserve grand championship. This senior yearling was sired by Johann Johnny D and bred by Richard Wenger of Manheim. Myers praised the beautiful mammary system on the reserve senior champion, but noted a soreness in the feet during the show and went to senior yearling for the reserve grand.

Reserve junior champion was Bruce Heilinger of ELCO FFA with Pretzel Jade Pop Twin, the



David Lentz and Sherry Donmoyer both of Northern Lebanon FFA captured the grand and reserve grand titles in the Holstein show. Lentz (left) led San-Bo Mars Katie to the championship and Donmoyer took the honors with R&E Jon Ribbon-Red. Pictured (from left): Tiffany Yeager, Chester County Dairy Princess, Tammy Balthaser; Dave Lentz, Sherry Donmoyer, Leon Helsey, State FFA President, Sharon Dice, Eastern Vice-President and Diane Dice, State Treasurer.

first place junior yearling.

Lebanon County had the top group of four in the Brown Swiss competition.

Holstein

David Lentz of Northern Lebanon FFA led San-Bo Mars Katie to the Holstein senior and grand championship titles. Sired by Marshfield Elevation Tony this homebred 5-year-old, was selected on her extreme dairyness and said

she could stand a lot of competition. In the reserve senior champion spot, Yoder selected a 3-year-old dry cow, Sonnen-Acres Mars Lucream shown by Adam Sonnen of ELCO FFA.

But Yoder went to his junior champion for the Holstein show reserve grand championship. Yoder admired the balance and cleanliness of this intermediate yearling and felt she was more correct on

her feet legs and she could stand up to a lot more competition. The junior champion shown by Sherry Donmoyer of Northern Lebanon FFA was R&E Jon Ribbon-Red, sired by Needle-Lane Jon-Red, bred by R. & E. Donmoyer. Show judge Yoder praised the balance, strength and correctness of Ribbon-Red, and liked her looks from hooks to pins. Kathy Jo Mase of Anville FFA exhibited the junior reserve champion, Ken-Ire Gold Jo a summer yearling.

The county of Lebanon exhibited the best four animals in the county groups. David Lentz was named the top breeder/exhibitor in Holstein show with Adam Sonnen named for second place.

Guernsey

It was a good day for Steven Wagner of Solanco FFA. Wagner took home the ribbons and trophies

(Turn to Page D16)



In the Guernsey competition Steven Wagner of Solanco FFA almost dominated the championships. Wagner (right) captured both junior titles, reserve senior champion and reserve grand champion in the Guernsey show. Heidi Schlegel (left) of Oley Valley FFA led Maple Knoll Norman Marta to the grand champion honors. Reserve senior champion was Wagner's 6-year-old East Malta Premier Meg.



CHICKEN FEED IS BIG MONEY

Don't Waste It!

For fifty years BIG DUTCHMAN CHAIN has been carrying feed to chickens. And for fifty years poultry equipment companies, including Big Dutchman, have tried to find a better way. There isn't one...only other ways.

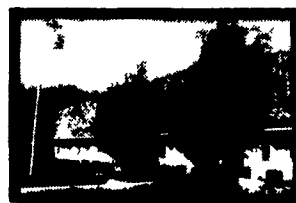
If you are a poultryman who is tiring of "pie in the sky" claims of extra cage rows per house and truckloads of feed savings... then look to Big Dutchman, the leader in poultry cage equipment systems. Take a "hands on" look at time-tested fully proven cage systems, to find out why producers are putting over a million layers every month into new Big Dutchman installations. Then look to the really successful poultry farms world wide and you will find Big Dutchman Chain carrying the load.



**BIG DUTCHMAN
BIG DIFFERENCE**

SYCAMORE IND. PARK
255 PLANE TREE
DRIVE
LANCASTER, PA 17603
(717) 393-5807

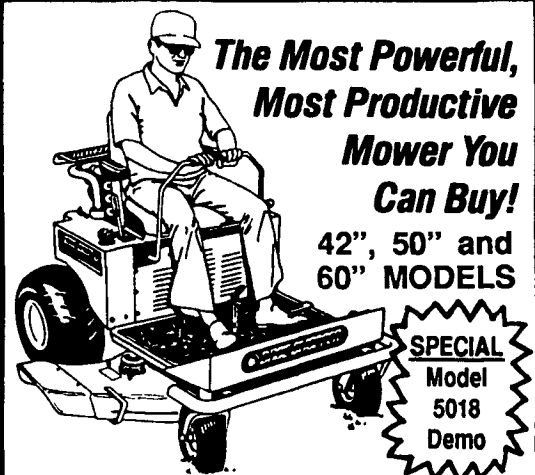
Route 30 West
at the
Centerville Exit.



H
**HERSHEY EQUIPMENT
COMPANY, INC.**
Designers of Quality Systems for Poultry, Swine and Grain Handling

DIXIE CHOPPER

The World's Fastest Lawn Mowers



**The Most Powerful,
Most Productive
Mower You
Can Buy!**

42", 50" and
60" MODELS

**SPECIAL
Model
5018
Demo**

CHECK THESE FEATURES

- Zero Turning Radius Provides Greater Maneuverability
- 6.5 mph Mowing Speed Lets You Cut More Acres in Less Time
- Trim as You Mow — Saves You Up To 85% Trimming Time
- Full Length Sharpened Blades Have 200+ mph Tip Speed
- Simple, Convenient Controls
- Powerful 16 to 24 HP Engines
- Built To Commercial Standards For Long Life, Low Maintenance

TAKE THE DIXIE CHALLENGE
Make us prove what we say with a **FREE Demonstration**
SEE OR CALL US TODAY

WES STAUFFER ENGINES & EQUIP.
23 Pleasant Valley Rd., Ephrata, PA 17522
(717) 738-4215

Ephrata Exit New Rt. 222, 1/4 Mile West
On Rt. 322, Turn left on Pleasant Valley Rd.