

# Franklin Co. DHIA

## dhia Monthly Report

Pennsylvania Dairy Herd Improvement Association

**BREED CODES**

- 1—Ayrshire
- 2—Guernsey
- 3—Holstein
- 4—Jersey
- 5—Brown Swiss
- 6—M Shorthorn
- 7—Red Dane
- 8—Mixed
- 9—Red and White

**June, 1988  
Rolling Herd Averages**

Name	Brd.	No. Cows	Lbs. Milk	Lbs. Fat	
Oakleigh Farm		3	119	20,853	822
RV&SV Hollenshead	B3	118	22,495	788	
Wayne A Hall		3	40	20,481	759
Stanley J Helman		3	74	20,434	753
Alvin Meyers		3	53	19,242	752
White-Mar Farm	B3	67	20,524	742	
Jaye & JC Young Jr		3	64	19,885	741
Roger Beck		3	79	18,059	739
Aldus Eby	B3	56	20,099	738	
Mike Flannery	B3	69	21,424	736	
Clinton Stahl	B3	78	20,188	733	
Long Lane Holstein	B3	12	18,885	728	
Mark D Garber	G3	38	20,123	726	
Stephen J Mellott	B3	117	19,111	721	
Richard Harshman & Son		3	76	19,428	721
C Richard Locke	B3	107	18,869	720	
Kenneth L Cauffman	B3	35	18,227	716	
Ivan D Horst		3	66	19,086	716
Edwin R Eby		3	59	18,991	710
Robert E Harwood		3	104	20,628	706
Fred E & Dale Rice		3	181	19,011	703
Carl O Stuff		3	51	19,714	703
C Glenn Daugherty		3	121	19,830	703
Meyers Bros Dairy		3	145	19,767	697
Ro-Mar-Co Holsteins		3	41	18,581	696
Wayne L Beidel	B3	59	18,200	693	

Mark W Meyers		3	90	18,442	692
Culbertson Green Farm	B3	116	18,853	692	
Ray & Roger Garber		2	56	14,162	692
Keeners Dairy	B3	115	17,956	687	
Criderdale Farm		3	72	17,407	685
Virgil & Daryl Crider	B3	107	17,870	678	
Roger & Ruth Benedict	G3	88	18,652	676	
Rodger T Kennedy	B3	69	18,978	675	

**Lactations**

Oakleigh Farm							
Jontune	RH	5-1	305	22,704	4.1	947	
Penny	RH	4-9	305	23,151	4.2	986	
Dancer	RH	3-1	305	19,016	4.6	885	
Carl E Pugh & Son							
Thelma	GH	4-9	305	23,340	3.9	920	
C Glenn Daugherty							
Jeddy	RH	4-2	305	30,893	4.0	1262	
Penny	RH	3-3	305	27,706	3.4	958	
Lester D Fortna							
Mill	RH	4-7	305	26,167	3.7	967	
Fred E & Dale Rice							
271	RH	11-2	305	22,226	3.9	879	
562	RH	5-0	305	23,811	3.9	934	
C Richard Locke							
158	RH	6-5	305	19,372	4.7	913	
RV & SV Hollenshead							
Valera	RH	4-8	305	23,738	4.0	965	
Chris-Co Holsteins							
8	RH	4-6	305	20,541	4.5	926	
Edwin R Eby							
53	RH	6-4	277	21,162	4.6	975	
64	RH	5-9	305	19,163	4.5	877	
18	RH	3-9	305	24,537	4.4	1079	
Robert Grove							
69	RH	4-9	305	23,360	3.7	876	
Long Lane Holstein							
Glena	RH	7-7	305	24,384	3.6	900	
Suzanna	RH	4-2	305	20,434	4.3	885	
White-Mar Farm							
36	RH	7-6	305	27,985	3.5	1004	

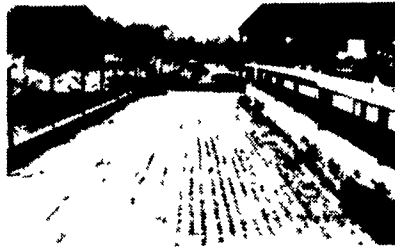
**CRAWFORD COUNTY DHIA  
June, 1988  
Rolling Herd Average**

Name	Brd.	No. Cows	Lbs. Milk	Lbs. Fat
Linz Farms	R&GH	37.8	24,467	830
John Tautin	R&GH	42.1	20,348	793
Alan & Rhona Custead	R&GH	81.7	20,777	782
Helen Anthony	R&GH	49.4	20,427	776
Dale Home Farms	RH	37.3	20,191	773
Stain-Brook Farms	R&GH	52.5	22,014	771
Black Pond Farms	RH	85.3	21,071	761
Richard L Black	RH	51.0	20,552	755
Jeffrey Raney	R&GH	45.6	20,628	743
Bryan R McCurdy	RH	33.7	20,028	736
O-Darlan Farm	R&GH	42.0	19,931	735
John W Greene	RH	55.0	20,186	734
Wil-Are Farm	RH	51.7	19,667	728
Doug Stanhope	R&GH	46.2	19,565	725
Morrell Farms	RH	99.2	19,362	703
George P Simcheck	R&GH	50.1	18,329	703
Spruce Row Farms	RJ	58.5	15,775	696
A&B Dairy Farm	R&GH	65.3	19,830	696
Raymond A Holabaugh	R&GH	62.3	18,930	696
Vel-Rus Holsteins	RH	71.6	20,938	695
Jacob H Leffler	R&GH	63.5	19,817	689
Queens Manor Holsteins	RH	25.6	18,079	689
James K Anderson	R&GH	45.0	17,639	683
Seldomrest "F" Farm	R&GMX	34.3	17,806	679
Tom & Libby Wilson	RH	20.9	17,791	674
David M Naugle	RH	17.2	19,019	671
GL & SL Foster	R&GH	42.3	18,188	670
Joe Arbuckle	RMX	33.5	18,671	669
Dean Horne	GH	17.1	18,792	668
Earl & Bonita Krider	R&GH	42.6	18,585	665
Darrel L Schweitzer	RH	43.5	18,340	665
W Norman Wheeler	R&GH	43.4	18,521	663
Robert Marzka	R&GH	30.4	16,817	656
Roses Dan-Dee Farms	RH	154.4	18,478	653
Dean Horne	R&GJ	12.5	12,967	651

**SLICK CONCRETE  
CAN BE ROUGHENED**

SCABBLING is an effective way to avoid unnecessary losses of cattle. The SCABBLER makes bands about two inches wide approximately 1/8" to 3/16 in. depth. This gives sufficient area for good footing while allowing you to scrape the smooth surface as before. It is near enough to the surface to give your cows full advantage of the roughness and deep enough to remain effective for years. It greatly aids in heat detection.

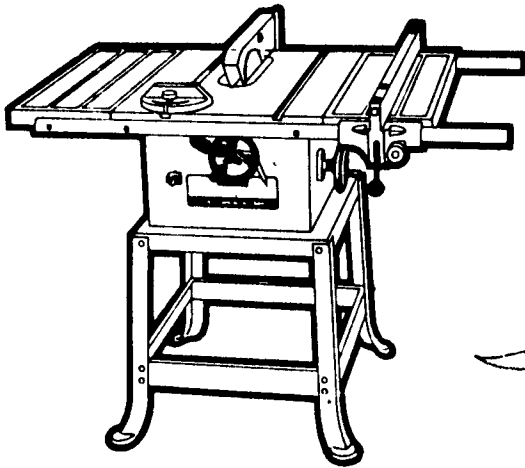
And the good news is that it is reasonably priced. You have the choice of doing it yourself or having us do it for you. We offer service right to your door. Call us for more details.



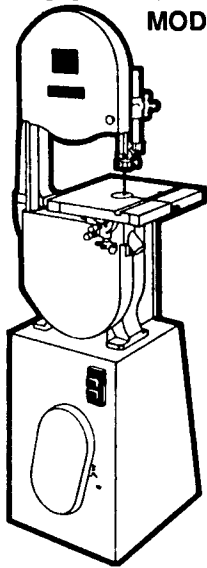
**SUBURBAN RENTALS, INC.**  
Call 800-692-0123  
We go almost anywhere

**TRUCKLOAD - SALE** Now Thru Aug. 31, 1988

**DELTA 10" CONTRACTOR'S SAW**  
MODEL # 34-444



**DELTA 14" WOOD BAND SAW**  
MODEL # 28-283



**YOUR CHOICE  
\$599<sup>00</sup>**

**Model TS-380 14" Miter Saw**

- Features:
- Die Cast Calibrated Miter Scale
  - Miter Cuts up to 52° Right or Left
  - Slotted Metal Cutting Table, Turns with the Blade for Accurate Cuts
  - Positive Stops at 90°, 22½°, 30° and 45° Left or Right
  - Spindle Lock for Easy Blade Change
  - Electric Brake Stops Blade in Seconds
  - Double Insulated

**NOW \$429<sup>00</sup>**

**Model S-500A 1/6 Sheet Finishing Sander**

- Features:
- All Ball Bearing Construction
  - Flush Sanding Capability
  - Dust Protected Lock-On Switch
  - Pad Size Allows Complete Utilization of Full Size Sheet of 9"x 11" Sandpaper When Cut into 6 Individual Sheets Each 3"x 5 1/2"
  - Double Insulated

**NOW \$42<sup>50</sup>**

**Model AP-10 10" Portable Planer**

- Features:
- Compact and Light Weight With Convenient Built-In Carrying Handle
  - Planes Material up to 10" Wide
  - 2-Blade Cutter Head
  - Easy Removal, Adjustment and Replacement of Blades
  - All Ball Bearing Construction
  - Blade Adjustment Gauge, Adjustment Tools and Extension Rollers Included

**NOW \$409<sup>00</sup>**

**Model TS-251U(S) 10" Miter Saw**

- Features:
- Die Cast Calibrated Miter Scale
  - Miter Cuts up to 45° Right or Left
  - Slotted Metal Cutting Table, Turns with the Blade for Accurate Cuts
  - Positive Stops at 90°, 22½° and 45° Left or Right
  - Spindle Lock for Easy Blade Change
  - Electric Brake Stops Blade in Seconds
  - Double Insulated

**NOW \$229<sup>00</sup>**

FREE CARBIDE BLADE & ACCESSORY PACKAGE



**BLUE BALL MACHINE CO., INC.**  
INDUSTRIAL EQUIPMENT & SUPPLIES

P.O. Box 369

Blue Ball, PA 17506-0218

(717) 354-4478

Mon., Tues., Wed., Fri.: 7:30-5:00; Thurs.: 7:30-8:00; Sat.: 8:00-12:00

**DON'T LOOK  
ANY FURTHER!**

**YOU'LL FIND IT IN  
LANCASTER FARMING'S  
CLASSIFIEDS**